

---

TUMOUR REGISTRY  
SIRIRAJ CANCER CENTER



STATISTICAL REPORT  
2000

FACULTY OF MEDICINE SIRIRAJ HOSPITAL  
MAHIDOL UNIVERSITY

ISSN 00857-3840

# TUMOUR REGISTRY

SIRIRAJ CANCER CENTER



STATISTICAL REPORT

2000

FACULTY OF MEDICINE SIRIRAJ HOSPITAL

MAHIDOL UNIVERSITY

ISSN 00857-3840

## INTRODUCTION

This is a report of the cancer statistics for the year 2000 of the Siriraj Hospital, Mahidol University. It is hospital-based statistics, so it should be interpreted with caution if one would like to extrapolate this data for other uses. It is quite informative for faculty member who are interested in oncology especially who are planning for human resource, budget allocation, personal development, research and the teaching of oncology.

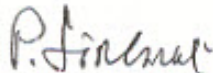
Again we have more new cancer patients this year, the cancer case are 2.37% of all new patients. There are some changes of the statistics of each tumor type. The number of the colo-rectal cancer and lung cancer are increasing steadily, and also the leukemia. The rest is the same as the number of the last year. The number of the prostate cancer is increasing significantly probably related to the early detection by using the PSA.

This is a good news so that we can treat the patient early. This might happen already with breast cancer. The number of head and neck cancer is decreasing. We also add the type of treatment of ovarian cancer and cervical cancer in addition to the staging. We are making an effort to add staging to all common cancers.

This year, one third of the patients come from Bangkok. The rest come from the neighbouring provinces, overall they come from of all over the country. This statistic may help the governmental agency decide the plan for "Health for all".

I would like to thank all the members of the committee of the tumor registry, especially Associate Professor V. Vootiprux, Dr. K. Amornpichetkul and our faculty personnels who provide the informations for us.

Recommendations and comments about this report are invited so that we can improve future edition.



**Pairoj Sinlarat, MD.**

*Chairman*

*Siriraj Cancer Centre*

*Faculty of Medicine Siriraj Hospital*

*Mahidol University*

*Bangkok 10700,*

*THAILAND*

*Fax. 66 2 4129169*

**2000**  
**TABLE I**  
**NUMBER OF PATIENT**

Type of Patient	No. of Cases
Total No. of Out Patients	1,525,332
Total No. of New Patients	162,977
Total No. of New Patients with Malignancy	3,865

The Cancer cases are 2.37% of all new patients

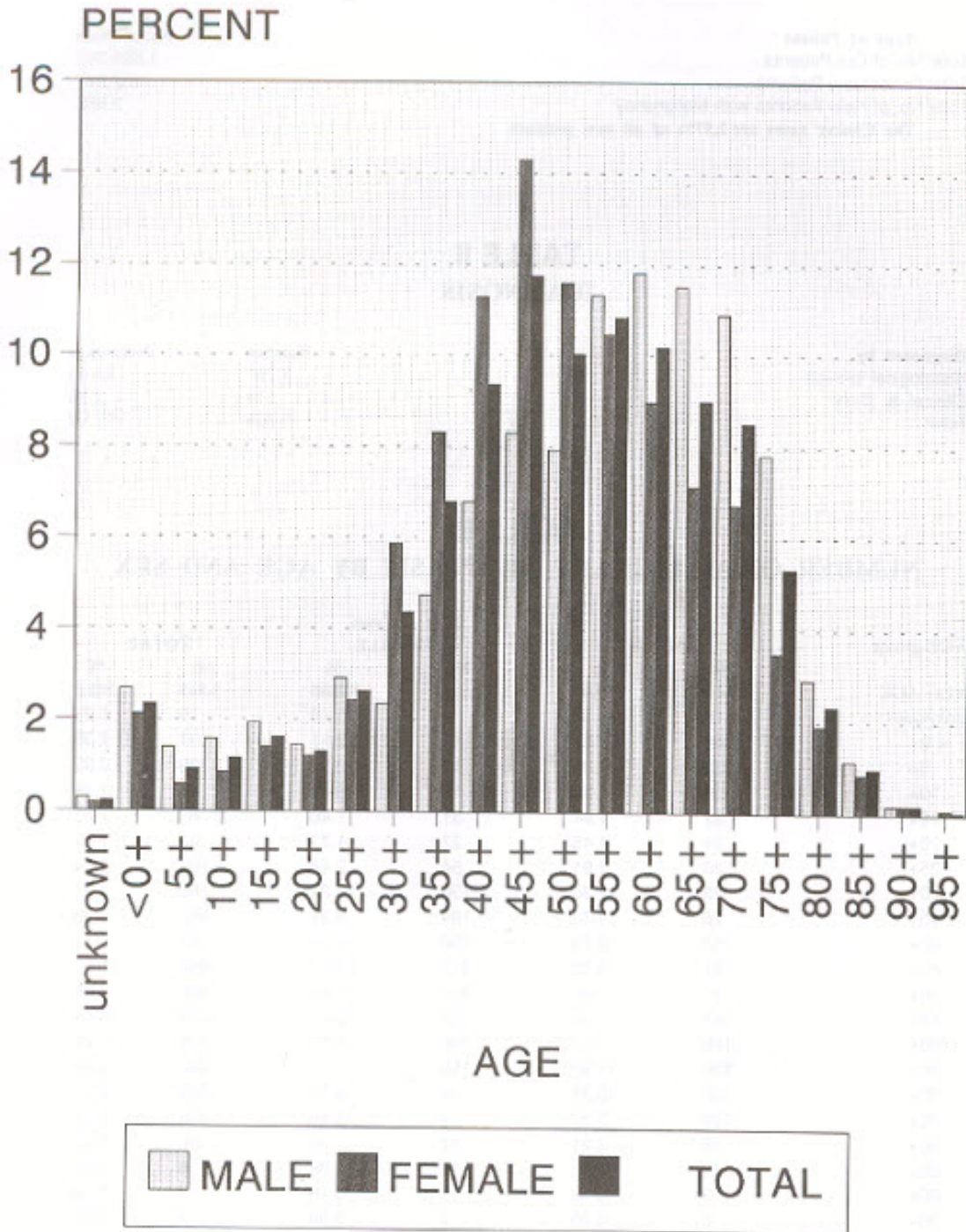
**TABLE II**  
**DIAGNOSIS**

Diagnosed by	Number	Percentage
Histological proved	3,751	97.05
Clinical & X-ray	114	2.95
Total	3,865	100.00

**TABLE III**  
**NUMBER OF MALIGNANT NEOPLASM BY AGE AND SEX**

AGE-group	No. of Cases					
	MALE		FEMALE		TOTAL	
	No	%	No	%	No	%
<b>ALL AGE</b>	<b>1,650</b>	<b>100.00</b>	<b>2,215</b>	<b>100.00</b>	<b>3,865</b>	<b>100.0</b>
Unknown	5	0.30	4	0.18	9	0.23
< 0+	44	2.67	47	2.12	91	2.35
5+	23	1.39	13	0.59	36	0.93
10+	26	1.58	19	0.86	45	1.16
15+	32	1.94	31	1.40	63	1.63
20+	24	1.45	27	1.22	51	1.32
25+	48	2.91	54	2.44	102	2.64
30+	39	2.36	130	5.87	169	4.37
35+	78	4.73	184	8.31	262	6.78
40+	112	6.79	250	11.29	362	9.37
45+	137	8.30	317	14.31	454	11.75
50+	131	7.94	257	11.60	388	10.04
55+	187	11.33	232	10.47	419	10.84
60+	195	11.82	199	8.98	394	10.19
65+	190	11.52	158	7.13	348	9.00
70+	180	10.91	149	6.73	329	8.51
75+	129	7.82	77	3.48	206	5.33
80+	48	2.91	42	1.90	90	2.33
85+	19	1.15	19	0.86	38	0.98
90+	3	0.18	4	0.18	7	0.18
95+	0	0.00	2	0.09	2	0.05

**TABLE III.I**  
**PERCENT OF MALIGNANT NEOPLASM BY AGE AND SEX**



**TABLE IV**  
**PRIMARY SITE**

CODE	SITE	No. of Cases			
		M	F	T	%
	<b>GRAND TOTAL</b>	<b>1,650</b>	<b>2,215</b>	<b>3,865</b>	<b>100.00</b>
<b>C00.0-C14.0</b>	<b>Malign. Neoplasm of Lip, Oral Cavity &amp; Pharynx</b>	<b>204</b>	<b>120</b>	<b>324</b>	<b>8.38</b>
C00.0	Upper lip	1	2	3	0.08
C00.1	Lower lip	4	7	11	0.28
C00.6	Commissure	0	1	1	0.03
C01	Base of tongue	20	4	24	0.62
C02.9	Tongue, unspecified	27	16	43	1.11
C03.0	Gum upper	3	1	4	0.10
C03.1	Gum lower	3	4	7	0.18
C03.9	Gum, unspecified	4	6	10	0.26
C04.9	Floor of mouth, unspecified	12	6	18	0.47
C05.0	Hard palate	6	4	10	0.26
C05.1	Soft palate	4	2	6	0.16
C06.0	Cheek mucosa	3	18	21	0.54
C07	Parotid gland	6	3	9	0.23
C08.9	Salivary gland, unspecified	1	0	1	0.03
C09.9	Tonsil, unspecified	14	13	27	0.70
C10.9	Oropharynx, unspecified	2	0	2	0.05
C11.9	Nasopharynx, unspecified	64	27	91	2.35
C12	Pyriform sinus	16	1	17	0.44
C13.1	Aryepiglottic	2	0	2	0.05
C13.9	Hypopharynx, unspecified	3	2	5	0.13
C14.0	Pharynx, unspecified	8	3	11	0.28
C14.8	Oral cavity, unspecified	1	0	1	0.03
<b>C15 - C26</b>	<b>Malign. Neoplasm of Digestive Organs</b>	<b>398</b>	<b>271</b>	<b>669</b>	<b>17.31</b>
C15.9	Esophagus, unspecified	54	9	63	1.63
C16.0	Stomach, cardia	2	1	3	0.08
C16.3	Stomach body	0	2	2	0.05
C16.9	Stomach, unspecified	45	51	96	2.48
C17.0	Duodenum	2	1	3	0.08
C17.1	Jejunum	0	1	1	0.03
C17.2	Ileum	0	2	2	0.05
C18.0	Caecum	2	2	4	0.10
C18.1	Appendix	0	1	1	0.03
C18.7	Sigmoid colon	32	39	71	1.84
C18.9	Colon, unspecified	61	54	115	2.98
C19	Rectosigmoid	2	0	2	0.05
C20	Rectum	53	50	103	2.66
C21.0	Anus, unspecified	2	0	2	0.05
C21.1	Anal canal	2	0	2	0.05
C22.0	Liver cell ca	87	22	109	2.82
C22.1	Cholangio ca	20	13	33	0.85
C22.9	Liver, unspecified	4	0	4	0.10
C23	Gall bladder	6	6	12	0.31
C24.0	Bile duct	4	1	5	0.13
C24.1	Ampular of Vater	6	3	9	0.23
C25.0	Pancreas head	7	5	12	0.31
C25.9	Pancreas, unspecified	7	5	12	0.31

CODE	SITE	No. of Cases			%
		M	F	T	
<b>C30-C39</b>	<b>Malign. Neoplasm of Respiratory &amp; Intrathoracic Organ</b>	<b>210</b>	<b>88</b>	<b>298</b>	<b>7.71</b>
C30.0	Nasal cavity	3	7	10	0.26
C30.1	Middle ear	0	1	1	0.03
C31.0	Maxillary sinus	4	3	7	0.18
C32.0	Glottis	37	1	38	0.98
C32.1	Supraglottis	11	1	12	0.31
C32.2	Subglottis	1	0	1	0.03
C32.8	Larynx overlap	3	0	3	0.08
C32.9	Larynx unspec	8	0	8	0.21
C34.9	Lung unspecified	139	73	212	5.49
C37	Thymus	3	1	4	0.10
C38.3	Medias, unspecified	1	1	2	0.05
<b>C40-C50</b>	<b>Malign. Neoplasm of Bone, Cartilage Skin, Soft, Tissue, Breast</b>	<b>128</b>	<b>527</b>	<b>655</b>	<b>16.97</b>
C40.0	Long Bone, upper limb	1	0	1	0.03
C40.2	Long Bone, lower limb	5	1	6	0.16
C40.3	Short Bone, lower limb	1	0	1	0.03
C41.0	Bone of head	0	1	1	0.03
C41.1	Mandible	1	0	1	0.03
C41.2	Vertebral column	1	1	2	0.05
C41.9	Bone, cartilage, unspecified	23	18	41	1.06
C43.1	Melanoma eye lid	1	2	3	0.08
C43.7	Melanoma, lower limb	1	1	2	0.05
C43.8	Melanoma, overlap	1	1	2	0.05
C43.9	Melanoma, skin unspecified	3	2	5	0.13
C44.0	Skin, lip	0	2	2	0.05
C44.1	Skin, eye lid	10	8	18	0.47
C44.2	Skin, ear	3	1	4	0.10
C44.3	Skin, face	18	20	38	0.98
C44.4	Skin, scalp	1	4	5	0.13
C44.5	Skin, trunk	6	8	14	0.36
C44.6	Skin, upper limb	6	3	9	0.23
C44.7	Skin, lower limb	2	2	4	0.10
C44.9	Skin, unspecified	7	3	10	0.26
C45.9	Mesothelioma unspecified	1	0	1	0.03
C46.0	Kaposi's sarcoma of skin	2	0	2	0.05
C47.9	Peripheral nerves and Autonomic nerve, unspecified	9	6	15	0.39
C48.0	Retro peritonium	1	2	3	0.08
C49.2	Soft tissue, lower limb	1	0	1	0.03
C49.9	Soft tissue, unspecified	19	21	40	1.03
C50.9	Breast, unspecified	4	420	424	11.0
<b>C51-C68</b>	<b>Malign. Neoplasm of Genital &amp; Urinary Tract</b>	<b>233</b>	<b>756</b>	<b>989</b>	<b>25.56</b>
C51.9	Vulva, unspecified	0	13	13	0.28
C52	Vagina	0	6	6	0.18
C53.9	Cervix, unspecified	0	550	550	14.23
C54.1	Endometrium	0	60	60	1.55
C54.9	Corpus, unspecified	0	1	1	0.03
C55	Uterus, unspecified	0	1	1	0.03
C56	Ovary	0	85	85	2.20
C58	Placenta	0	2	2	0.05
C60.9	Penis, unspecified	21	0	21	0.54
C61	Prostate	94	0	94	2.43
C62.9	Testis, unspecified	4	0	4	0.10
C64	Kidney	18	5	23	0.60
C65	Renal pelvis	2	3	5	0.13
C66	Ureter	0	1	1	0.03
C67.9	Bladder, unspecified	94	28	122	3.16
C68.0	Urethra	0	1	1	0.03

TABLE V

CODE	SITE	No. of Cases			%
		M	F	T	
<b>C69-C75 Malignant Neoplasm of Eye, Brain, Spinal Cord, &amp; Endocrine Gland</b>		<b>57</b>	<b>86</b>	<b>143</b>	<b>3.65</b>
	<b>Gland</b>				
C69.0	Conjunctiva	1	3	4	0.10
C69.1	Cornea	1	0	1	0.03
C69.2	Retina	4	10	14	0.36
C69.5	Lacrimal gland	2	0	2	0.05
C69.6	Orbit	1	2	3	0.08
C69.9	Eye, unspecified	2	1	3	0.08
C70.0	Cerebral meningioma	0	2	2	0.05
C71.6	Cerebellum	4	1	5	0.13
C71.9	Brain, unspecified	16	14	30	0.78
C72.0	Spinal cord	2	0	2	0.05
C73	Thyroid gland	22	51	73	1.84
C74.9	Adrenal, unspecified	1	2	3	0.08
C75.3	Pineal gland	1	0	1	0.03
<b>C76-C80 Malignant Neoplasm of Ill-Defined, Secondary &amp; Unspecified Site</b>		<b>104</b>	<b>108</b>	<b>212</b>	<b>5.54</b>
C77.0	Lymphnode node, head, neck	20	16	36	0.93
C77.9	Lymphnode Node, unspecified site	3	0	3	0.10
C80	Without Specification of site	81	92	173	4.50
<b>C81-C96 Malignant Neoplasms of Lymphoid, Haemetic &amp; Related Tissue</b>		<b>316</b>	<b>259</b>	<b>57</b>	<b>14.88</b>
C81.9	Hodgkin's disease	4	5	9	0.23
C83.7	Burkitt's tumour	2	2	4	0.10
C84.4	T-cell lymphoma	4	4	8	0.21
C85.1	B-cell lymphoma	1	2	3	0.08
C85.9	Lymphoma nos	123	87	210	5.43
C90.0	Multiple myeloma	29	22	51	1.32
C91.0	Acute lymphoblastic leukaemia	41	37	78	2.02
C91.1	Chronic lymphoblastic leukaemia	14	9	23	0.60
C92.0	Acute myeloid leukaemia	33	36	69	1.79
C92.1	Chronic myeloid leukaemia	33	23	56	1.45
C92.4	Acute promyelocytic leukaemia	2	3	5	0.13
C92.5	Acute myelomonocytic leukaemia	7	3	10	0.26
C93.0	Acute monocytic leukaemia	1	2	3	0.08
C94.7	Other specified leukaemia	16	18	34	0.88
C95.9	Leukaemia, unspecified	3	2	5	0.13
C96.1	Histiocytosis	3	4	7	0.18



**TABLE V**  
**PATHOLOGY ACCORDING TO SITE**

			No. of Cases		
			M	F	Total
C00.0	Malig.	Neoplasm of upper lip	1	2	3
		Sq. cell ca.	1	2	3
C00.1	Malig.	Neoplasm of lower lip	4	7	11
		Sq. cell ca.	4	7	11
C00.9	Malig.	Neoplasm of lip unspecified	0	1	1
		Sq. cell ca.	0	1	1
C01	Malig.	Neoplasm of base of tongue	20	4	24
		Malig. lymphoma	1	0	1
		Sq. cell ca.	19	4	23
C02.9	Malig.	Neoplasm of Tongue, unspecified	27	16	43
		Spindle cell sarcoma	1	0	1
		Sq. cell ca.	26	16	42
C03.0	Malig.	Neoplasm of Upper gum	3	1	4
		Malig. lymphoma	1	0	1
		Sq. cell ca.	2	1	3
C03.1	Malig.	Neoplasm of Lower gum	3	4	7
		Sq. cell ca.	3	4	7
C03.9	Malig.	Neoplasm of Gum, unspecified	4	6	10
		Adenocarcinoma	1	0	1
		Sq. cell ca.	3	6	9
C04.9	Malig.	Neoplasm of floor of mouth	12	6	18
		Adenoid cystic ca.	0	2	2
		Sq. cell ca.	12	4	16
C05.0	Malig.	Neoplasm of Hard palate	6	4	10
		Adenoid cystic ca.	0	1	1
		Melanoma nos	1	0	1
		Mucoepidermoid ca.	1	1	2
		Sq. cell ca.	4	2	6
C05.1	Malig.	Neoplasm of Soft palate	4	2	6
		Adenoid cystic ca.	0	1	1
		Malig. lymphoma	1	1	2
		Sq. cell ca.	3	0	3
C06.0	Malig.	Neoplasm of Buccal mucosa	3	18	21
		Sq. cell ca.	3	18	21
C07	Malig.	Neoplasm of Parotid gland	6	3	9
		Acinic cell adenoca	1	1	2
		Mucoepidermoid ca.	2	0	2
		Sq. cell ca.	1	1	2
		Undiff ca.	1	0	1
		Mixed tumour malig	1	1	2
C08.9	Malig.	Neoplasm of Salivary gland, unspecified	1	0	1
		Mucoepidermoid ca.	1	0	1
C09.9	Malig.	Neoplasm of Tonsil	14	13	27
		Malig. lymphoma	0	10	10
		Sq. cell ca.	13	3	16
		Neuroendocrine ca.	1	0	1
C10.9	Malig.	Neoplasm of Oropharynx	2	0	2
		Malig. lymphoma	1	0	1
		Sq. cell ca.	1	0	1

			No. of Cases		
			M	F	Total
<b>C11.9</b>	<b>Malig.</b>	<b>Neoplasm of Nasopharynx</b>	<b>64</b>	<b>27</b>	<b>91</b>
		Adenoid cystic ca.	0	1	1
		Malig. lymphoma	1	2	3
		Malig. tumour	3	1	4
		Sq. cell ca.	41	12	53
		Undiff. ca.	19	11	30
<b>C12</b>	<b>Malig.</b>	<b>Neoplasm of Pyriform sinus</b>	<b>16</b>	<b>1</b>	<b>17</b>
		Malig. lymphoma	1	0	1
		Sq. cell ca.	15	1	16
<b>C13.9</b>	<b>Malig.</b>	<b>Neoplasm of Hypopharynx, unspecified</b>	<b>5</b>	<b>2</b>	<b>7</b>
		Sq. cell ca.	5	2	7
<b>C14.9</b>	<b>Malig.</b>	<b>Neoplasm of Pharynx, unspecified</b>	<b>9</b>	<b>3</b>	<b>12</b>
		Sq. cell ca.	9	3	12
<b>C15</b>	<b>Malig.</b>	<b>Neoplasm of Oesophagus</b>	<b>54</b>	<b>9</b>	<b>63</b>
		Adenocarcinoma	1	3	4
		Malig. tumour	6	0	6
		Sq. cell ca.	46	6	52
		Undiff. ca.	1	0	1
<b>C16</b>	<b>Malig.</b>	<b>Neoplasm of Stomach</b>	<b>47</b>	<b>54</b>	<b>101</b>
		Adenocarcinoma	41	44	85
		Malig. lymphoma	3	4	7
		Malig. tumour	0	2	2
		Spindle cell sarcoma	0	1	1
		Signet ring cell ca.	2	2	4
		Stromal sarcoma nos	1	0	1
		Undiff. ca.	0	1	1
<b>C17</b>	<b>Malig.</b>	<b>Neoplasm of Small Intestine</b>	<b>2</b>	<b>4</b>	<b>6</b>
		Adenocarcinoma	2	3	5
		Malig. lymphoma	0	1	1
<b>C18</b>	<b>Malig.</b>	<b>Neoplasm of Colon</b>	<b>95</b>	<b>96</b>	<b>191</b>
		Adenocarcinoma	93	87	180
		Clear cell ca.	0	1	1
		Malig. lymphoma	0	3	3
		Malig. tumour	2	4	6
		Signet ring cell ca.	0	1	1
<b>C19</b>	<b>Malig.</b>	<b>Neoplasm of rectosigmoid</b>	<b>2</b>	<b>0</b>	<b>2</b>
		Adenocarcinoma	2	0	2
<b>C20</b>	<b>Malig.</b>	<b>Neoplasm of Rectum</b>	<b>53</b>	<b>50</b>	<b>103</b>
		Adenocarcinoma	52	50	102
		Malig. tumour	1	0	1
<b>C21</b>	<b>Malig.</b>	<b>Neoplasm of Anal Canal and Anus</b>	<b>4</b>	<b>3</b>	<b>7</b>
		Adenocarcinoma	3	1	4
		Mucinous adenoca	1	0	1
		Sq. cell ca.	0	2	2
<b>C22</b>	<b>Malig.</b>	<b>Neoplasm of Liver</b>	<b>111</b>	<b>35</b>	<b>146</b>
		Cholangiocarcinoma	20	13	33
		Hepatocellular ca.	85	20	105
		Hepatoblastoma	2	2	4
		Malig. tumour	1	0	1
		Undiff. ca.	3	0	3
<b>C23</b>	<b>Malig.</b>	<b>Neoplasm of Gall Bladder</b>	<b>6</b>	<b>6</b>	<b>12</b>
		Adenocarcinoma	5	4	9
		Malig. tumour	1	2	3
<b>C24.0</b>	<b>Malig.</b>	<b>Neoplasm of Extrahepatic Common bile duct</b>	<b>4</b>	<b>1</b>	<b>5</b>
		Adenocarcinoma	3	1	4
		Malig. tumour	1	0	1

TABLE V

PATHOLOGY ACCORDING TO SITE			No. of Cases		
			M	F	Total
C24.1	Malig.	<b>Neoplasm of Ampular of Vater</b>	6	3	9
		Adenocarcinoma	5	3	8
		Malig. tumour	1	0	1
C25.9	Malig.	<b>Neoplasm of Pancreas</b>	14	10	24
		Adenocarcinoma	8	5	13
		Mucinous cystadenoca	0	1	1
		Malig. tumour	6	4	10
C30.0	Malig.	<b>Neoplasm of Nasal Cavity</b>	3	7	10
		Malig. lymphoma	0	3	3
		Sq. cell ca.	3	2	5
		Undiff. ca.	0	2	2
C30.1	Malig.	<b>Neoplasm of Middle Ear</b>	0	1	1
		Sq. cell ca.	0	1	1
C31.0	Malig.	<b>Neoplasm of Maxillary Sinus</b>	4	3	7
		Adenocarcinoma	0	1	1
		Adenoid cystic ca.	2	1	3
		Malig. lymphoma	2	0	2
		Undiff. ca.	0	1	1
C32.0	Malig.	<b>Neoplasm of Glottis</b>	37	1	38
		Carcinoma in situ	1	0	1
		Sq. cell ca.	37	1	37
C32.1	Malig.	<b>Neoplasm of Supraglottis</b>	11	1	12
		Adenocarcinoma	1	0	1
		Malig. tumour	1	0	1
		Sq. cell ca.	9	1	10
C32.2	Malig.	<b>Neoplasm of Subglottis</b>	1	0	1
		Sq. cell ca.	1	0	1
C32.9	Malig.	<b>Neoplasm of Larynx, unspecified</b>	11	0	11
		Sq. cell ca.	11	0	11
C34.9	Malig.	<b>Neoplasm of Lung and Bronchus</b>	139	73	212
		Adenocarcinoma	69	49	118
		Adenosquamous ca.	0	1	1
		Adenoid cystic ca.	1	0	1
		Alveolar cell ca.	0	2	2
		Malig. tumour	7	1	8
		Sq. cell ca.	30	7	37
		Undiff. ca.	8	5	13
		Large cell ca.	3	2	5
		Small cell ca.	21	6	27
C37	Malig.	<b>Neoplasm of thymus</b>	3	1	4
		Malig. thymoma	2	1	3
		Mixed germ cell	1	0	1
C38	Malig.	<b>Neoplasm of Heart, mediastinum and pleura</b>	1	1	2
		Malig. lymphoma	0	1	1
		Malig. teratoma	1	0	1
C40-C41	Malig.	<b>Neoplasm of Bone</b>	32	21	53
		Chondrosarcoma	5	2	7
		Ewing's sarcoma	6	1	7
		Giant cell tumour	3	5	8
		Osteosarcoma	17	13	30
		Malig. ameloblastoma	1	0	1
C43	Malig.	<b>Melanoma of Skin</b>	6	6	12
		Melanoma	6	6	12

			No. of Cases		
			M	F	Total
C53	Malig.	<b>Neoplasm of Cervix uteri</b>	0	550	550
		Adenocarcinoma	0	81	81
		Adenosquamous ca.	0	32	32
		Anaplastic ca.	0	1	1
		Carcinoma in situ	0	8	8
		Malig. tumour	0	18	18
C54	Malig.	<b>Neoplasm of Corpus uteri</b>	0	61	61
		Adenocarcinoma	0	47	47
		Adenosquamous ca.	0	12	12
		Clear cell ca.	0	1	1
		Mullerian mixed tumour, malignant	0	1	1
C55	Malig.	<b>Neoplasm of Uterus, Part unspecified</b>	0	1	1
		Leiomyosarcoma	0	1	1
C56	Malig.	<b>Neoplasm of Ovary</b>	0	85	85
		Adenocarcinoma	0	21	21
		Adenosquamous ca.	0	1	1
		Clear cell ca.	0	10	10
		Mucinous cystadenoma	0	21	21
		Serous cystadenoma	0	9	9
		Dysgerminoma	0	7	7
		Endometrioid carcinoma	0	4	4
		Endodermal sinus tumour	0	1	1
		Leiomyosarcoma	0	1	1
		Malig. teratoma	0	2	2
		Mucinous adenoca	0	1	1
		Malig. tumour	0	4	4
C58	Malig.	<b>Neoplasm of Placenta</b>	0	2	2
		Choriocarcinoma	0	2	2
C60	Malig.	<b>Neoplasm of Penis</b>	21	0	21
		Sq. cell ca.	21	0	21
C61	Malig.	<b>Neoplasm of Prostate</b>	94	0	94
		Adenocarcinoma	87	0	87
		Malig. tumour	7	0	7
C62	Malig.	<b>Neoplasm of Testis</b>	4	0	4
		Embryonal cell ca.	1	0	1
		Endodermal sinus tumour	1	0	1
		Mixed germ cell	1	0	1
		Seminoma	1	0	1
C64	Malig.	<b>Neoplasm of Kidney</b>	18	5	23
		Renal cell ca.	15	5	20
		Wilms' tumour	3	0	3
C65	Malig.	<b>Neoplasm of Renal Pelvis</b>	2	3	5
		Malig. tumour	1	0	1
		Sq. cell ca.	0	2	2
		Transitional cell ca.	1	1	2
C66	Malig.	<b>Neoplasm of Ureter</b>	0	1	1
		Transitional cell ca.	0	1	1
C67	Malig.	<b>Neoplasm of Bladder</b>	94	28	122
		Adenocarcinoma	3	0	3
		Malig. tumour	3	1	4
		Sq. cell ca.	2	5	7
		Transitional cell ca.	86	22	108

TABLE VI  
THE TEN LEADING SITES

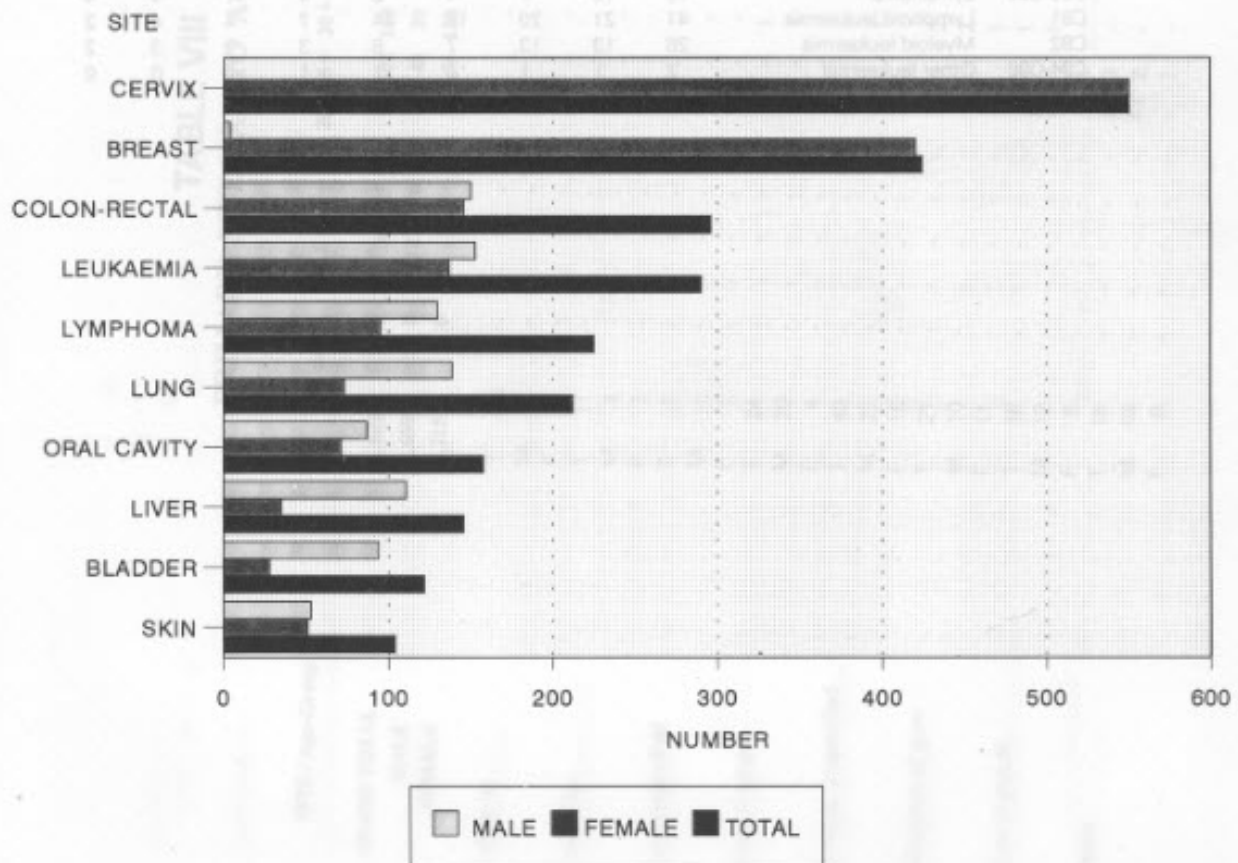
SITE	M	F	No. of Cases		Total	
			M	F		
C68	Malignant	<b>Neoplasm of Other Urinary Organ</b>			13	
		Transitional cell ca.	0	1		1
C69	Malignant	<b>Neoplasm of Eye and Adnexa</b>			27	
		Adenoid cystic ca.	11	16		27
		Embryonal rhabdomyosarcoma	1	1		2
		Malignant lymphoma	1	0		1
		Mucoepidermoid ca.	1	1		2
		Retinoblastoma	4	10		14
		Rhabdomyosarcoma	1	1		2
C70	Malignant	<b>Neoplasm of Meninges</b>			2	
		Sq. cell ca.	2	3		5
C70	Malignant	<b>Neoplasm of Meninges</b>			2	
		Meningioma	0	2		2
C71	Malignant	<b>Neoplasm of Brain</b>			35	
		Anaplastic ca.	20	15		35
		Astrocytoma	0	1		1
		Glioblastoma	13	8		21
		Malignant lymphoma	1	4		5
C72	Malignant	<b>Neoplasm of Spinal Cord, Cranial Nerve</b>			2	
		Medulloblastoma	2	0		2
		Astrocytoma	2	0		2
		Malignant lymphoma	2	1		3
		Medulloblastoma	4	1		5
C73	Malignant	<b>Neoplasm of Thyroid gland</b>			73	
		Adenocarcinoma	22	51		73
		Anaplastic ca.	1	0		1
		Follicular adenocarcinoma	1	1		2
		Hurthle cell ca.	4	8		12
		Malignant lymphoma	0	1		1
		Medullary ca.	0	2		2
C74	Malignant	<b>Neoplasm of Adrenal gland</b>			3	
		Malignant tumour	1	0		1
		Papillary ca.	14	35		49
		Sq. cell ca.	1	3		4
		Adrenal cortical ca.	0	1		1
		Ganglioneuroblastoma	0	1		1
		Pheochromocytoma	1	0		1
C75	Malignant	<b>Neoplasm of Pineal Gland</b>			1	
		Mixed germ cell	1	0		1
C77	Malignant	<b>Metastasis in Lymph node</b>			39	
		Adenocarcinoma	23	16		39
		Clear cell carcinoma	15	11		26
		Malignant tumour	1	0		1
		Signet ring cell ca.	2	0		2
		Signet ring cell ca.	0	1		1
		Sq. cell ca.	2	2		4
C80	Malignant	<b>Neoplasm site not specified</b>			173	
		Undiff. ca.	3	2		5
		Adenocarcinoma	81	92		173
		Adenosquamous cell ca.	59	66		125
		Adenoid cystic ca.	0	1		1
		Anaplastic ca.	0	1		1
		Clear cell ca.	0	1		1
		Mucinous cystadenoma	1	0		1
		Melanoma	0	1		1
		Medullary ca.	0	1		1
		Mucoepidermoid ca.	1	0		1
		Malignant tumour	4	3		7
		Spindle cell sarcoma	0	1		1
		Sq. cell ca.	9	9		18
		Undiff. ca.	7	6		13
Neuroendocrine ca.	0	1	1			



**TABLE VI**  
**THE TEN LEADING SITES**

Site	M	F	T	%
ALL SITES	1,650	2,215	3,865	100
Cervix Uteri	-	550	550	14.23
Breast	4	420	424	10.97
Colon Rectum	150	146	296	7.66
Leukaemia	153	137	290	7.50
Lymphoma	130	95	225	5.82
Lung	139	73	212	5.48
Oral Cavity	87	71	158	4.09
Liver	111	35	146	3.78
Bladder	94	28	122	3.16
Skin	53	51	104	2.69

**TABLE VI.I**  
**THE TEN LEADING SITES**



**TABLE VII**  
**MALIGNANT NEOPLASM IN CHILDHOOD**

Code		No. of Cases								
		TOTAL	M	F	>0-4		5-9		10-15	
					M	F	M	F	M	F
<b>Total</b>		<b>172</b>	<b>93</b>	<b>79</b>	<b>44</b>	<b>47</b>	<b>23</b>	<b>13</b>	<b>26</b>	<b>19</b>
C11	Nasopharynx	1	1	0	0	0	0	0	1	0
C16	Stomach	1	0	1	0	0	0	0	0	1
C22	Liver	4	2	2	2	1	0	1	0	0
C37-C39	Heart and medias	2	2	0	0	0	0	0	2	0
C40-C41	Bone and joint	17	12	5	0	1	2	0	10	4
C45-C49	Soft tissue	20	12	8	12	7	0	0	0	1
C50	Breast	1	0	1	0	0	0	1	0	0
C56-C57	Ovary and adnexa	4	0	4	0	0	0	1	0	3
C60-C63	Male genital organ	2	2	0	2	0	0	0	0	0
C64-C65	Kidney	3	3	0	1	0	2	0	0	0
C69	Eye and adnexa	17	6	11	5	11	0	0	1	0
C71-C72	Brain and cord	9	5	4	1	1	3	1	1	2
C73	Thyroid	1	0	1	0	1	0	0	0	0
C74-C75	Endocrine gland	2	1	1	0	0	1	1	0	0
C80-C89	Lymphoma	19	12	7	4	2	4	1	4	4
C91	Lymphoid leukaemia	41	21	20	10	14	7	4	4	2
C92	Myeloid leukaemia	26	13	13	7	8	3	3	3	2
C94-C96	Other leukaemia	2	1	1	0	1	1	0	0	0













SITE / Age-Group		Under 1	1 + 5	10 + 15	20 + 25	30 + 35	40 + 45	50 + 55	60 + 65	70 + 75	80 + 85	90 + 95	Unknown
Connective and soft tissue													
Breast													
Vulva													
Vagina													
Cervix uteri													
Corpus uteri													
Uterus part unspecified													
Ovary													
Placenta													
Penis													
Prostate													

**SITE / Age-Group**

	Under 1	1	5	10	15	20	25	30	35	40	45	50	55	60	65	70	75	80	85	90	95+	Unknown	
<b>Testis</b>																							
T	4	-	2	-	-	-	1	-	1	-	-	-	-	-	-	-	-	-	-	-	-	-	-
M	4	-	2	-	-	-	1	-	1	-	-	-	-	-	-	-	-	-	-	-	-	-	-
<b>Kidney, exclude renal pelvis</b>																							
T	23	-	-	-	-	-	-	-	1	1	3	4	3	3	2	3	-	-	-	-	-	-	-
M	18	-	-	-	-	-	-	-	1	1	3	4	1	1	2	2	-	-	-	-	-	-	-
<b>Renal pelvis</b>																							
T	5	-	-	-	-	-	-	-	-	-	2	2	1	1	-	-	-	-	-	-	-	-	-
M	2	-	-	-	-	-	-	-	-	-	1	1	-	-	-	-	-	-	-	-	-	-	-
<b>Ureter</b>																							
T	3	-	-	-	-	-	-	-	-	-	2	-	-	-	-	-	-	-	-	-	-	-	-
M	1	-	-	-	-	-	-	-	-	-	-	-	-	-	-	-	-	-	-	-	-	-	-
<b>Bladder</b>																							
T	122	-	-	-	-	-	-	-	1	7	6	9	8	15	14	20	16	15	8	2	1	-	-
M	94	-	-	-	-	-	-	-	1	4	6	6	8	14	10	15	10	10	8	1	1	-	-
<b>Urinary organ</b>																							
T	28	-	-	-	-	-	-	-	-	3	3	1	4	5	6	5	1	-	-	-	-	-	-
M	1	-	-	-	-	-	-	-	-	-	-	-	-	-	-	-	-	-	-	-	-	-	-
<b>Eye and adnexa</b>																							
T	27	-	-	-	-	-	-	-	2	1	1	1	1	1	3	1	2	-	-	-	-	-	-
M	11	-	-	-	-	-	-	-	1	1	1	1	1	1	3	1	1	-	-	-	-	-	-
<b>Meninges</b>																							
T	16	-	-	-	-	-	-	-	2	1	1	1	1	1	1	1	1	1	1	1	1	1	1
M	2	-	-	-	-	-	-	-	1	1	1	1	1	1	1	1	1	1	1	1	1	1	1
<b>Brain</b>																							
T	35	-	-	-	-	-	-	-	2	4	3	2	3	3	6	3	1	1	1	1	1	1	1
M	20	-	-	-	-	-	-	-	1	3	1	2	2	1	1	1	1	1	1	1	1	1	1
<b>Other nervous system</b>																							
T	15	-	-	-	-	-	-	-	1	1	2	1	1	1	1	1	1	1	1	1	1	1	1
M	2	-	-	-	-	-	-	-	1	1	1	1	1	1	1	1	1	1	1	1	1	1	1
<b>Thyroid</b>																							
T	73	-	-	-	-	-	-	-	1	4	3	11	5	10	3	5	6	8	5	3	5	2	-
M	22	-	-	-	-	-	-	-	2	2	1	1	1	2	1	3	2	2	3	1	-	-	-
F	51	-	-	-	-	-	-	-	1	2	3	9	4	9	2	3	5	5	3	1	2	1	-

**SITE / Age-Group**

**Under 1 1 + 5 + 10 + 15 + 20 + 25 + 30 + 35 + 40 + 45 + 50 + 55 + 60 + 65 + 70 + 75 + 80 + 85 + 90 + 95+ Unknown**

SITE	Under 1	1	5	10	15	20	25	30	35	40	45	50	55	60	65	70	75	80	85	90	95+	Unknown		
Adrenal gland																								
Other endocrine gland																								
Unspecified site																								
Hodgkin's disease																								
Malignant lymphoma																								
Multiple myeloma																								
Acute lymphoblastic leukaemia																								
Chronic lymphocytic leukaemia																								
Acute myeloid leukaemia																								
Chronic myeloid leukaemia																								
Myeloid leukaemia, unspecified																								
T	3	-	-	1	-	-	-	-	-	-	-	-	-	-	-	-	-	-	-	-	-	-	-	-
M	1	-	-	-	1	-	-	-	-	-	-	-	-	-	-	-	-	-	-	-	-	-	-	-
F	2	-	-	-	-	-	-	-	-	-	-	-	-	-	-	-	-	-	-	-	-	-	-	-
T	1	-	-	1	-	-	-	-	-	-	-	-	-	-	-	-	-	-	-	-	-	-	-	-
M	1	-	-	1	-	-	-	-	-	-	-	-	-	-	-	-	-	-	-	-	-	-	-	-
F	-	-	-	-	-	-	-	-	-	-	-	-	-	-	-	-	-	-	-	-	-	-	-	-
T	212	-	-	-	2	4	8	9	17	37	23	27	38	17	22	4	3	1	-	-	-	-	-	-
M	104	-	-	-	-	1	4	5	10	14	8	13	18	12	14	2	2	-	-	-	-	-	-	-
F	108	-	-	-	-	1	3	4	4	7	23	15	14	20	5	8	2	1	1	-	-	-	-	-
T	9	-	-	-	1	2	-	-	1	1	1	-	1	-	2	-	-	-	-	-	-	-	-	-
M	4	-	-	-	-	-	-	-	1	1	-	-	-	-	2	-	-	-	-	-	-	-	-	-
F	5	-	-	-	1	2	-	-	-	1	-	-	1	-	-	-	-	-	-	-	-	-	-	-
T	225	-	6	5	8	9	6	13	13	16	20	12	10	19	32	17	16	15	5	2	-	-	-	1
M	130	-	4	4	4	5	4	10	3	11	10	8	5	9	22	9	7	10	3	2	-	-	-	-
F	95	-	2	1	4	4	2	3	10	5	10	4	5	10	10	8	9	5	2	-	-	-	-	1
T	51	-	-	-	-	-	1	1	-	2	3	4	8	5	14	5	6	-	1	1	-	-	-	-
M	29	-	-	-	-	-	-	1	-	2	2	3	4	1	9	2	5	-	-	-	-	-	-	-
F	22	-	-	-	-	-	-	1	-	-	1	1	4	4	5	3	1	-	1	1	-	-	-	-
T	78	-	24	11	6	11	2	5	5	3	2	2	2	-	3	1	1	-	-	-	-	-	-	-
M	41	-	10	7	4	5	2	4	2	1	-	2	2	-	1	1	-	-	-	-	-	-	-	-
F	37	-	14	4	2	6	-	1	3	2	2	-	-	-	2	-	1	-	-	-	-	-	-	-
T	23	-	-	-	-	-	-	-	-	-	2	2	4	3	3	1	3	3	2	-	-	-	-	-
M	14	-	-	-	-	-	-	-	-	-	2	1	1	3	1	-	2	3	1	-	-	-	-	-
F	9	-	-	-	-	-	-	-	-	-	-	1	3	-	2	1	1	-	1	-	-	-	-	-
T	69	-	15	6	4	5	3	6	6	3	5	4	4	3	2	1	-	2	-	-	-	-	-	-
M	33	-	7	3	3	3	2	4	1	1	3	2	2	-	2	-	-	-	-	-	-	-	-	-
F	36	-	8	3	1	2	1	2	5	2	2	2	2	3	-	1	-	2	-	-	-	-	-	-
T	56	-	-	-	1	3	2	6	4	4	6	7	2	4	7	3	6	1	-	-	-	-	-	-
M	33	-	-	-	-	2	-	5	-	3	4	4	2	1	4	1	6	1	-	-	-	-	-	-
F	23	-	-	-	1	1	2	1	4	1	2	3	-	3	3	2	-	-	-	-	-	-	-	-
T	15	-	-	-	-	3	-	1	2	2	1	2	-	2	2	-	-	-	-	-	-	-	-	-
M	9	-	-	-	-	1	-	1	1	1	1	1	-	1	2	-	-	-	-	-	-	-	-	-
F	6	-	-	-	-	2	-	-	1	1	-	1	-	1	-	-	-	-	-	-	-	-	-	-

TABLE IX





**TABLE IX**  
**THE COMMON SITE OF MALIGNANCY BY PERCENTAGE**

Site	Percentage				
	1996	1997	1998	1999	2000
<b>Total Cases</b>	<b>3988</b>	<b>4014</b>	<b>3610</b>	<b>4006</b>	<b>3865</b>
Cervix Uteri	15.02	15.60	13.93	14.10	14.23
Breast	9.40	9.79	10.38	11.15	10.97
Colon rectum	4.54	6.08	6.43	6.44	7.66
Leukaemia	5.77	7.25	7.53	6.59	7.50
Lymphoma	4.99	5.31	3.93	5.59	5.82
Lung	6.47	6.63	6.32	5.14	5.48
Oral Cavity	6.24	5.18	5.21	4.47	4.09
Liver	4.11	4.93	4.04	4.22	3.78
Bladder	3.23	2.49	3.66	3.25	3.16
Skin	3.03	3.08	3.60	3.20	2.69

**TABLE X**  
**THE COMMON MALIGNANCY IN MALE**

Site	Male	%
<b>All site</b>	<b>1650</b>	<b>100</b>
Leukaemia	153	9.27
Colon Rectum	150	9.09
Lung	139	9.22
Lymphoma	130	7.88
Liver	111	6.73
Bladder	94	5.70
Prostate	94	5.70
Oral Cavity	87	5.27
Nasopharynx	81	3.88
Larynx	60	3.64

**TABLE XI**  
**THE COMMON MALIGNANCY IN FEMALE**

Site	Female	%
<b>All site</b>	<b>2215</b>	<b>100</b>
Cervix	550	24.83
Breast	421	19.01
Colon Rectum	146	6.59
Leukaemia	137	6.19
Lymphoma	95	4.29
Ovary	85	3.84
Lung	73	3.29
Oral Cavity	71	3.21
Corpus	61	2.75
Stomach	54	2.44

**TABLE IX**  
**THE COMMON SITE OF MALIGNANCY BY PERCENT**  
**1996-2000**

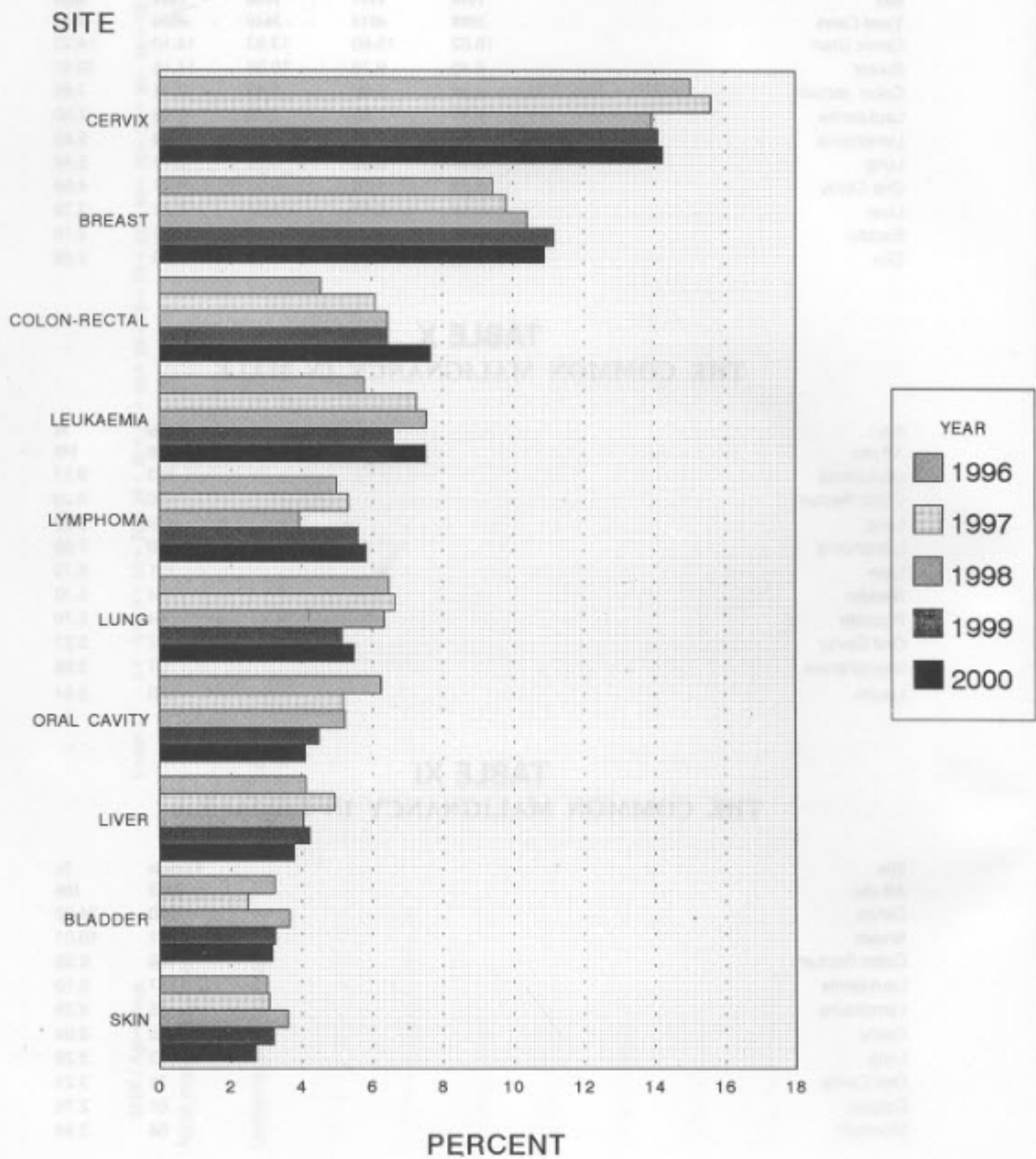


TABLE XII  
NUMBER OF CASES OF MALIGNANCY BY PROVINCE

Province	Total	Male	Female
<b>All Province</b>	<b>3865</b>	<b>1650</b>	<b>2215</b>
Angtong	21	9	12
Bangkok	1398	608	790
Buriram	35	15	20
Chantaburi	21	4	17
Chachoengsao	27	15	12
Chayaphum	24	11	13
Chainat	21	9	12
Chiengmai	8	3	5
Chiengrai	17	5	12
Chonburi	32	17	15
Chumphon	40	22	18
Kalasin	8	2	6
Kampaengphet	22	14	8
Kanchanaburi	132	47	85
Khonkaen	19	6	13
Krabi	5	1	4
Lampang	11	3	8
Loei	7	4	3
Lopburi	17	7	10
Lumphun	1	1	0
Mahasarakham	18	7	11
Maehongsorn	1	1	0
Nakornnayok	14	5	9
Nakornphatom	194	69	125
Nakornphanom	10	8	2
Nakornsawan	34	17	17
Korat	58	25	33
Nakonsithamarat	42	23	19
Nan	6	5	1
Narathiwat	3	2	1
Nonthaburi	205	87	118
Nongkhai	18	6	12
Pathumthani	47	17	30
Pang Nga	3	1	2
Phattalung	6	3	3
Phetburi	63	25	38
Phetchabun	37	22	15
Phuket	7	3	4
Phrae	6	4	2
Pichit	32	14	18
Pisnulok	19	6	13
Prachinburi	17	6	11
Prachuab	66	27	39
Ayuthaya	56	29	27
Payao	6	2	4
Rajburi	202	75	127
Ranong	16	8	8
Rayong	23	18	5

Province	Total	Male	Female
Roi et	25	7	18
Samutprakan	128	57	71
Samutsakhorn	138	59	79
Samutsongkra	62	29	33
Sakonakhorn	14	4	10
Satun	2	1	1
Saraburi	26	9	17
Singburi	9	2	7
Songkhla	6	3	3
Srisaket	36	17	19
Sukhothai	2	0	2
Suphanburi	110	42	68
Surathani	34	15	19
Surin	34	18	16
Tak	1	0	1
Trat	9	2	7
Trang	7	0	7
Ubon	22	10	12
Udonthani	13	7	6
Uthaitani	3	3	0
Utharadit	8	6	2
Yala	5	2	3
Yasothon	8	2	6
Mukdaharn	5	0	5
Sakaew	24	11	13
Amnartjarein	6	3	3
Nongbualampoo	4	2	2

TABLE XIII

## THE NUMBER OF CASES OF MALIGNANCY BY OCCUPATION

Occupation	North	N-East	Central	South	Total
Farmer	0	1	1	0	2
Fishery	0	0	2	1	3
Housewife	37	75	1083	51	1246
Mercantile	12	23	321	19	375
Official	15	33	346	28	422
Plantation	29	121	242	30	422
Priest	1	5	33	2	41
Worker	55	120	905	30	1110
Unoccupy	13	32	171	18	234
Not record	0	0	2	0	2
Total	162	410	3106	179	3857

Not record both occupation and province 8

**TABLE XIV**  
**MALIGNANT LYMPHOMA BY SITE**

Site	Total	Male	Female
<b>All sites</b>	<b>263</b>	<b>142</b>	<b>121</b>
Tongue	1	1	0
Gum	1	1	0
Palate	2	1	1
Tonsil	10	0	10
Oropharynx	1	1	0
Nasopharynx	3	1	2
Hypopharynx	1	1	0
Stomach	7	3	4
Small bowel	1	0	1
Large bowel	3	0	3
Accessory sinus	5	2	3
Mediastinum	1	0	1
Eye and adnexa	2	1	1
Brain	3	2	1
Thyroid	1	0	1
Lymph node	220	127	93

**TABLE XV**  
**MALIGNANT LYMPHOMA BY AGE**

Age	Total		Male		Female	
	n	%	n	%	n	%
<b>All Age</b>	<b>263</b>	<b>100.00</b>	<b>142</b>	<b>100.00</b>	<b>121</b>	<b>100.00</b>
Unknown	1	0.38	0	0.00	1	0.83
< 0+	5	1.90	3	2.11	2	1.65
5+	5	1.90	4	2.82	1	0.83
10+	7	2.66	3	2.11	4	3.31
15+	8	3.04	4	2.82	4	3.31
20+	6	2.28	4	2.82	2	1.65
25+	18	6.84	13	9.15	5	4.13
30+	16	6.08	4	2.82	12	9.92
35+	19	7.22	12	8.45	7	5.79
40+	22	8.37	11	7.75	11	9.09
45+	15	5.70	9	6.34	6	4.96
50+	15	5.70	7	4.93	8	6.61
55+	22	8.37	9	6.34	13	10.74
60+	34	12.93	24	16.90	10	8.26
65+	20	7.60	10	7.04	10	8.26
70+	21	7.98	8	5.63	13	10.74
75+	20	7.60	12	8.45	8	6.61
80+	6	2.28	3	2.11	3	2.48
85+	3	1.14	2	1.41	1	0.83

**TABLE XVI**  
**CLINICAL STAGE OF CERVIX**

Stage	Female	%	Total	%
Stage not record	75	13.64	75	13.64
Stage 1	7	1.27	7	1.27
Stage 1a	6	1.09	6	1.09
Stage 1b	68	12.36	68	12.36
Stage 2	4	0.73	4	0.73
Stage 2a	11	2.00	11	2.00
Stage 2b	161	29.27	161	29.27
Stage 3	5	0.91	5	0.91
Stage 3a	3	0.55	3	0.55
stage 3b	192	34.91	192	34.91
Stage 4	12	2.18	12	2.18
Stage 4a	4	0.73	4	0.73
Stage 4b	2	0.36	2	0.36
<b>Total</b>	<b>550</b>	<b>100.00</b>	<b>550</b>	<b>100.00</b>

**TABLE XVII**  
**CLINICAL STAGE OF OVARY**

Stage	Female	%	Total	%
Stage not record	29	34.12	29	34.12
Stage 1a	4	4.71	4	4.71
Stage 1c	10	11.76	10	11.76
Stage 2b	2	2.35	2	2.35
Stage 2c	5	5.88	5	5.88
Stage 3	6	7.06	6	7.06
Stage 3a	5	5.88	5	5.88
Stage 3b	5	5.88	5	5.88
Stage 3c	15	17.65	15	17.65
Stage 4	4	4.71	4	4.71
<b>Total</b>	<b>85</b>	<b>100.00</b>	<b>85</b>	<b>100.00</b>

THE COMMITTEE ON CANCER CENTER  
TSA  
**TABLE XVIII**  
**TREATMENT OF CA CERVIX**

Stage	Female	%	Total	%
Surgery	52	9.45	52	9.45
Surgery + radiation	7	1.27	355	1.27
Surgery + chemotherapy	4	0.73	4	0.73
Radiation	355	64.55	355	64.55
Radiation + chemotherapy	57	10.36	57	10.36
Chemotherapy	23	4.18	23	4.18
Other	1	0.18	1	0.18
Not recorded	51	9.27	51	9.27
<b>Total</b>	<b>350</b>	<b>100.00</b>	<b>550</b>	<b>100.00</b>

**TABLE XIX**  
**TREATMENT OF CA OVARY**

Stage	Female	%	Total	%
Surgery	1	1.18	1	1.18
Surgery + radiation	1	1.18	1	1.18
Surgery + chemotherapy	1	1.18	1	1.18
Surgery + radiation + chemotherapy	1	1.18	1	1.18
Radiation	1	1.18	1	1.18
Radiation + chemotherapy	1	1.18	1	1.18
Chemotherapy	6	7.06	6	7.06
Other	34	40.00	34	40.00
Not recorded	40	47.06	40	47.06
<b>Total</b>	<b>85</b>	<b>100.00</b>	<b>85</b>	<b>100.00</b>

OFFICE STAFF

N. NEETHARAN  
K. SUDHAKAR  
S. CHANDRAN  
K. NARAYANAN  
A. RAMANUJAM  
N. NARAYANAN

**TABLE XX**  
**XIV TREATMENT OF CA BREAST**

Stage	Male	%	Female	%	Total	%
Surgery	0	0.00	7	1.66	7	1.66
Surgery + radiation	0	0.00	5	1.19	5	1.19
Surgery + chemotherapy	0	0.00	30	7.13	30	7.13
Surgery + radiation + chemotherapy	0	0.00	2	0.48	2	0.48
Radiation	1	25.00	24	5.70	25	5.88
Radiation + chemotherapy	0	0.00	20	4.75	20	4.75
Chemotherapy	0	0.00	72	17.10	72	17.10
other	0	0.00	1	0.24	1	0.24
Not recorded	3	75.00	260	61.76	263	61.88
<b>Total</b>	<b>4</b>	<b>100.00</b>	<b>421</b>	<b>100.00</b>	<b>425</b>	<b>100.00</b>

**TABLE XIX**  
**TREATMENT OF CA OVARY**

Stage	Male	%	Female	%	Total	%
Surgery	1	1.18	1	1.18	2	2.36
Surgery + radiation	1	1.18	1	1.18	2	2.36
Surgery + chemotherapy	1	1.18	1	1.18	2	2.36
Surgery + radiation + chemotherapy	1	1.18	1	1.18	2	2.36
Radiation	1	1.18	10	11.76	11	12.94
Radiation + chemotherapy	0	0.00	0	0.00	0	0.00
Chemotherapy	0	0.00	24	27.91	24	27.91
Other	0	0.00	0	0.00	0	0.00
Not recorded	0	0.00	40	46.51	40	46.51
<b>Total</b>	<b>8</b>	<b>94.12</b>	<b>85</b>	<b>98.82</b>	<b>93</b>	<b>100.00</b>



## THE COMMITTEE OF SIRIRAJ CANCER CENTER

Dr.	P. SINLARAT	CHAIRMAN
"	S. SANGRUCHI	VICE CHAIRMAN
"	N. NEUNGTON	
"	C. PICHITPORNCHAI	
"	C. THIRAPAKAWONG	
"	S. ROJANANIN	
"	C. METHEETRAIRUT	
"	G. VEERAKUL	
"	C. CHONGKOLWATANA	
"	W. BOONNUCH	
"	V. SRIMUNINIMIT	
"	C. NUALYONG	
"	K. AMORNPICHETKUL	
"	C. AUVARAKUL	
"	A. RATANAWICHITRASIN	
Mrs.	M. SOMBUTBOON	
Dr.	P. PATTARANUTAPORN	SECRETARY

## THE SUBCOMMITTEE OF TUMOUR REGISTRY

Dr.	P. SINLARAT
"	C. PICHITPORNCHAI
"	C. METHEETRAIRUT
"	C. THIRAPAKAWONG
"	V. SRIMUNINIMIT
"	G. VEERAKUL
"	K. AMORNPICHETKUL
"	A. RATANAWICHITRASIN
"	P. PATTARANUTAPORN

## OFFICE STAFF

Mrs.	K. NEOVAKUL
Miss.	P. KLANKEAW
Mr.	N. CHUMROJ
Mrs.	P. MAHAMOASORLAE
Miss.	A. HIRANYAKUPT
Miss.	M. MUANGNGAM