

TUMOUR REGISTRY
SIRIRAJ CANCER CENTER



STATISTICAL REPORT
2001

FACULTY OF MEDICINE SIRIRAJ HOSPITAL
MAHIDOL UNIVERSITY

ISSN 00857 - 3840

TUMOUR REGISTRY
SIRIRAJ CANCER CENTER



STATISTICAL REPORT
2001

FACULTY OF MEDICINE SIRIRAJ HOSPITAL
MAHIDOL UNIVERSITY

ISSN 00857 - 3840

INTRODUCTION

This report is the hospital base , it includes all cancers notified to the registry that were first diagnosed between 1st January 2001 and 31st December 2001 in Siriraj Hospital. In this report, cancers are grouped by ICD-10 . For different cancer in the same organ is counted as a new tumour. On the basis of the first three digits of the ICD-O 2 morphology, eight groups of malignant neoplasms considered to be histologically different are defined. Incidence reporting of multiple tumours is bases upon these groups.

It should be noted that the cancer incidence in this report is from the Siriraj Hospital only. The information contained in this report is intended to give a summary of incidence tables on site, age, sex, and morphology of cancers seen in the hospital for those who are interested in oncology especially for research and teaching.

This report has been made possible by the collaboration of numerous persons within the Siriraj Hospital. Thanks must first go to the consultants and staffs in pathology laboratory for the regular and completeness of their contribution. I wish also to thanks the registry staffs, consultants and volunteers for their diligence and enthusiasm in performance of their duties in processing the data of which this report is based.



Kris Bhothisuwan MD
Chairman,
Siriraj Cancer Center
Faculty of Medicine Siriraj Hospital
Mahidol University
Bangkok 10700
THAILAND

2001
TABLE I
NUMBER OF PATIENT

Type of patient	No. of Cases
Total No. of Out Patients	2,222,992
Total No. of New Patients	141,545
Total No. of New Patients with Malignancy	3,981

The Cancer case are 2.81% of all new patients

TABLE II
DIAGNOSIS

Diagnosed by	Number	Percentage
Histological proved	3,623	96.03
Clinical & X-ray	158	3.97
Total	3,981	100.00

TABLE III
NUMBER OF MALIGNANT NEOPLASM BY AGE AND SEX

AGE-group	No. of Cases					
	MALE		FEMALE		TOTAL	
	No	%	No	%	No	%
ALL AGE	1,641	100.00	2,340	100.00	3,981	100.00
1+	25	1.52	22	0.94	47	1.16
5+	26	1.56	16	0.68	42	1.06
10+	18	1.10	18	0.77	36	0.90
15+	28	1.71	12	0.51	40	1.00
20+	27	1.65	43	1.84	70	1.76
25+	38	2.19	55	2.35	91	2.29
30+	58	3.53	126	5.38	184	4.62
35+	64	3.90	200	8.55	264	6.63
40+	97	5.91	294	12.14	381	9.57
45+	126	7.68	311	13.29	437	10.98
50+	161	9.81	270	11.54	431	10.83
55+	179	10.91	245	10.47	424	10.65
60+	193	11.76	237	10.13	430	10.80
65+	222	13.53	193	8.25	415	10.42
70+	162	9.87	152	6.50	314	7.89
75+	117	7.13	92	3.93	209	5.25
80+	66	4.02	41	1.75	107	2.69
85+	25	1.52	17	0.73	42	1.06
90+	9	0.55	5	0.21	14	0.35
95+	2	0.12	1	0.04	3	0.06

TABLE III.I
NUMBER OF MALIGNANCY BY AGE

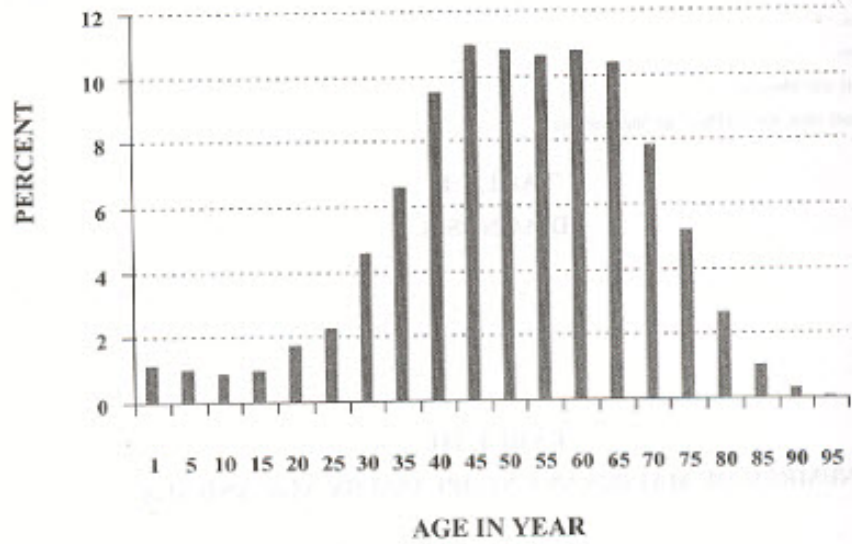
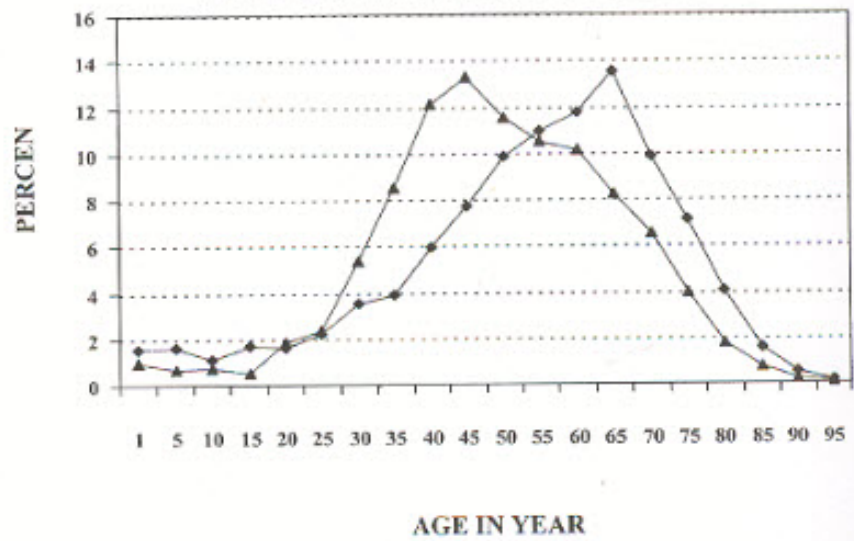


TABLE III.II
NUMBER OF MALIGNANCY BY AGE AND SEX



**TABLE IV
PRIMARY SITE**

CODE	SITE	No. of Cases			%
		M	F	T	
	GRAND TOTAL	1,641	2,340	3,981	100.00
C00.0-C14.0	Malignant Neoplasm of Lip, Oral Cavity & Pharynx	219	112	331	8.31
C00.0	Upper lip	0	1	1	0.03
C00.1	Lower lip	3	10	13	0.33
C00.6	Commissure	1	0	1	0.03
C01	Base of tongue	21	4	25	0.63
C02.9	Tongue, unspecified	31	23	54	1.36
C03.0	Gum upper	3	2	5	0.13
C03.1	Gum lower	6	2	8	0.20
C03.9	Gum, unspecified	3	4	7	0.18
C04.9	Floor of mouth, unspecified	8	2	10	0.25
C05.0	Hard palate	5	3	8	0.20
C05.1	Soft palate	5	0	5	0.13
C05.9	Palate unspecified	2	0	2	0.05
C06.0	Cheek mucosa	4	12	16	0.40
C07	Parotid gland	8	3	11	0.28
C08.9	Salivary gland, unspecified	4	2	6	0.15
C09.1	Tonsillar pilary	1	0	1	0.03
C09.9	Tonsil, unspecified	17	10	27	0.68
C10.9	Oropharynx, unspecified	3	0	3	0.08
C11.9	Nasopharynx, unspecified	60	33	93	2.34
C12	Pyriform sinus	27	0	27	0.68
C13.9	Hypopharynx, unspecified	3	1	4	0.10
C14.0	Pharynx, unspecified	4	0	4	0.10
C15-C26	Malignant Neoplasm of Digestive Organs	366	293	659	16.55
C15.9	Esophagus, Unspecified	50	13	63	1.58
C16.0	Stomach Cardia	0	1	1	0.03
C16.2	Stomach Body	0	1	1	0.03
C16.3	Pyloric antrum body	0	7	7	0.18
C16.9	Stomach, unspecified	32	35	67	1.68
C17.0	Duodenum	3	0	3	0.08
C17.1	Jejunum	0	1	1	0.03
C17.2	Ileum	3	1	4	0.10
C18.0	Cecum	2	5	7	0.18
C18.2	Colon Ascending	0	1	1	0.03
C18.4	Colon Transverse	1	0	1	0.03
C18.5	Colon Splenic	1	0	1	0.03
C18.6	Colon descending	1	0	1	0.03
C18.7	Sigmoid colon	29	31	60	1.51
C18.9	Colon unspecified	48	63	111	2.79
C19	Rectosigmoid	8	11	19	0.48
C20	Rectum	47	53	100	2.51
C22.0	Liver cell ca	86	21	107	2.69
C22.1	Cholangio ca	27	13	40	1.00
C22.3	Angiosarcoma liver	1	0	1	0.03
C22.9	Liver, unspecified	3	1	4	0.10

CODE	SITE	No. of Cases			%
		M	F	T	
C23	Gall bladder	5	9	14	0.35
C24.0	Bile duct	1	0	1	0.03
C24.1	Ampulla of Vater	2	4	6	0.15
C25.0	Pancreas head	8	10	18	0.45
C25.2	Pancreas tail	0	1	1	0.03
C25.9	Pancreas unspecified	5	7	12	0.30
C30-C39	Malignant Neoplasm of Respiratory & Intra-thoracic Organ	242	98	340	8.54
C30.0	Nasal cavity	3	7	10	0.25
C31.0	Maxillary sinus	2	2	4	0.10
C31.1	Ethmoid sinus	1	1	2	0.05
C32.0	Glottis	17	2	19	0.48
C32.1	Supraglottis	10	1	11	0.28
C32.	Subglottis	1	0	1	0.03
C32.8	Larynx overlap	1	1	2	0.05
C32.9	Larynx, unspecified	9	2	11	0.28
C33	Trachea	2	0	2	0.05
C34.1	Lung upper lobe	26	17	43	1.08
C34.2	Lung middle lobe	3	2	5	0.13
C34.3	Lung lower lobe	8	5	13	0.33
C34.9	Lung, unspecified	155	55	210	5.28
C37	Thymus	1	1	2	0.05
C38.1	Anterior mediastinum	1	1	2	0.05
C38.2	Posterior mediastinum	0	1	1	0.03
C38.3	Medias, unspecified	2	0	2	0.05
C40-C50	Malignant Neoplasm of Bone, Cartilage, Skin, Soft Tissue, Breast	102	574	676	16.98
C40.0	Long bone, upper limb	2	0	2	0.05
C40.2	Long bone, lower limb	11	8	19	0.48
C40.9	Bone, unspecified	3	6	9	0.23
C41.0	Bone of head	2	0	2	0.05
C41.1	Mandible	1	0	1	0.03
C41.4	Pelvic bone	1	0	1	0.03
C41.9	Bone, cartilage, unspecified	4	8	12	0.30
C43.5	Melanoma of trunk	0	1	1	0.03
C43.6	Melanoma, upper limb	1	2	3	0.08
C43.7	Melanoma, lower limb	2	3	5	0.13
C43.9	Melanoma skin, unspecified	4	3	7	0.18
C44.0	Skin, lip	1	6	7	0.18
C44.1	Skin, eyelid	3	3	6	0.15
C44.2	Skin, ear	3	4	7	0.18
C44.3	Skin, face	13	17	30	0.75
C44.4	Skin, scalp	1	3	4	0.10
C44.5	Skin, trunk	5	3	8	0.20
C44.6	Skin, upper limb	3	6	9	0.23
C44.7	Skin, lower limb	3	3	6	0.15
C44.9	Skin, unspecified	3	6	9	0.23
C45.1	Mesothelioma, peritoneum	0	1	1	0.03
C46	Kaposi's sarcoma of skin	1	0	1	0.03

CODE	SITE	No. of Cases			%
		M	F	T	
C47.9	Peripheral nerves and autonomic nervous system, unspecified	8	9	17	0.43
C48.0	Retroperitoneum	2	0	2	0.05
C49.1	Soft tissue, upper limb	2	2	4	0.10
C49.3	Soft tissue, thorax	0	1	1	0.03
C49.5	Soft tissue, pelvis	1	0	1	0.03
C49.9	Soft tissue, unspecified	17	14	31	0.78
C50.9	Breast, unspecified	5	466	471	11.83
C51-C68	Malign. Neoplasm of Genital and Urinary Tract	272	824	1,096	27.53
C51.9	Vulva, unspecified	0	6	6	0.15
C52	Vagina	0	17	17	0.43
C53.0	Endocervix	0	1	1	0.03
C53.9	Cervix, unspecified	0	559	559	14.04
C54.1	Endometrium	0	71	71	1.78
C55	Uterus, unspecified	0	4	4	0.10
C56	Ovary	0	130	130	3.27
C58	Placenta	0	2	2	0.05
C60.9	Penis, unspecified	18	0	18	0.45
C61	Prostate	146	0	146	3.67
C62.0	Testis, unspecified	2	0	2	0.05
C64	Kidney	16	11	27	0.68
C65	Renal pelvis	5	3	8	0.20
C66	Ureter	2	0	2	0.05
C67.5	Bladder neck	2	0	2	0.05
C67.9	Bladder, unspecified	81	20	101	2.54
C69-C75	Malign. Neoplasm of Eye, Brain, Spinal Cord, and Endocrine Gland	48	97	145	3.64
C69.0	Conjunctiva	2	2	4	0.10
C69.2	Retina	1	2	3	0.08
C69.4	Ciliary body	3	3	6	0.15
C69.5	Lacrimal gland	0	1	1	0.03
C69.6	Orbit	0	5	5	0.13
C70.9	Meninges, unspecified	0	4	4	0.10
C71.1	Frontal lobe	3	1	4	0.10
C71.2	Temporal lobe	0	2	2	0.05
C71.3	Parietal lobe	2	1	3	0.08
C71.5	Ventricle	1	2	3	0.08
C71.6	Cerebellum	2	2	4	0.10
C71.9	Brain, unspecified	12	19	31	0.78
C73	Thyroid gland	15	49	64	1.61
C74.0	Adrenal cortex	1	1	2	0.05
C74.9	Adrenal, unspecified	0	2	2	0.05
C75.0	Parathyroid	0	1	1	0.03
C75.1	Pituitary	1	0	1	0.03
C75.3	Pineal gland	5	0	5	0.13

CODE	SITE	No of Cases			%
		M	F	T	
C76-C80	Malign. Neoplasm of Ill-Defined, Secondary and Unspecified Site	118	109	227	5.70
C77.0	Lymphnode, head, neck	11	9	20	0.50
C77.9	Lymphnode, unspecified	10	5	15	0.38
C79.0	Met to kidney	0	1	1	0.03
C79.2	Met to skin	0	1	1	0.03
C79.3	Met to brain	4	3	7	0.18
C79.5	Met to bone	1	1	2	0.05
C79.8	Met to other or specified site	1	1	2	0.05
C80	Without specified of site	91	88	179	4.50
C81-C96	Malign. Neoplasm of Lymphoid, Haematologic and Related Tissue	274	233	507	12.74
C81.9	Hodgkin's disease	3	4	7	0.18
C82.2	Lymphoma large cell, follicular	0	2	2	0.05
C82.9	Follic Lymphoma, unspecified	1	0	1	0.03
C83.0	Lymphoma diffuse small	1	2	3	0.08
C83.2	Lymphoma diffuse mixed	13	11	24	0.60
C83.3	Lymphoma diffuse large	14	17	31	0.78
C83.5	Lymphoblastic Lymphoma	0	1	1	0.03
C83.7	Burkitt's tumour	1	0	1	0.03
C83.8	Other diffuse lymphoma	1	0	1	0.03
C83.9	Diffuse Lymphoma unspecified	0	1	1	0.03
C84.4	T-cell lymphoma	4	3	7	0.18
C85.1	B-cell lymphoma	1	1	2	0.05
C85.9	Lymphoma, unspecified	69	60	129	3.24
C90	Multiple myeloma	26	15	41	1.03
C90.2	Plasmacytoma	1	1	2	0.05
C91	Acute lymphoblastic leukaemia	48	41	89	2.24
C91.1	Chronic lymphocytic leukaemia	16	4	20	0.50
C92.0	Acute myeloid leukaemia	19	29	48	1.21
C92.1	Chronic myeloid leukaemia	35	20	55	1.38
C92.4	Acute promyelocytic leukaemia	4	4	8	0.20
C92.5	Acute myelomonocytic leukaemia	0	3	3	0.08
C93.0	Acute monocytic leukaemia	2	2	4	0.10
C94.6	Acute myelofibrosis	1	1	2	0.05
C95.9	Leukaemia, unspecified	10	10	20	0.50
C96.1	Histiocytosis	1	4	5	0.13

TABLE V
PATHOLOGY ACCORDING TO SITE

		No. of Cases		TOTAL	
		MALE	FEMALE		
C00	MALIGNANT NEOPLASM OF LIP	4	11	15	
	8021/3 CARCINOMA, ANAPLASTIC	0	1	1	
	8051/3 VERRUCOUS CARCINOMA	0	2	2	
	8070/3 SQUAMOUS CELL CARCINOMA	4	8	12	
C01-C02	MALIGNANT NEOPLASM OF TONGUE	52	27	79	
	8000/3 NEOPLASM, MALIGNANT, NOS	1	0	1	
	8051/3 VERRUCOUS CARCINOMA	0	1	1	
	8070/2 SQUAMOUS CELL CARCINOMA IN SITU	1	0	1	
	8070/3 SQUAMOUS CELL CARCINOMA	50	25	75	
	8200/3 ADENOID CYSTIC CARCINOMA	0	1	1	
C03-C06	MALIGNANT NEOPLASM OF GUM, FLOOR OF MOUTH, PALATE AND OTHER UNSPECIFIED PART OF MOUTH	36	25	61	
	8000/3 NEOPLASM, MALIGNANT, NOS	0	1	1	
	8020/3 CARCINOMA, UNDIFFERENTIATED	1	0	1	
	8070/3 SQUAMOUS CELL CARCINOMA	32	19	51	
	8140/3 ADENOCARCINOMA	0	3	3	
	8430/3 MUCOEPIDERMOID CARCINOMA	0	1	1	
	8720/3 MALIGNANT MELANOMA	1	1	2	
	9590/3 MALIGNANT LYMPHOMA	1	0	1	
	9670/3 MALIGNANT LYMPHOMA, SMALL LYMPHOCYTIC	1	0	1	
	C07-C08	MALIGNANT NEOPLASM PAROTID AND OTHER MAJOR SALIVARY GLAND	12	5	17
		8000/3 NEOPLASM, MALIGNANT, NOS	1	0	1
8020/3 CARCINOMA, UNDIFFERENTIATED		1	1	2	
8140/3 ADENOCARCINOMA		1	0	1	
8200/3 ADENOID CYSTIC CARCINOMA		1	2	3	
8430/3 MUCOEPIDERMOID CARCINOMA		4	0	4	
8550/3 ACINAR CELL CARCINOMA		1	0	1	
8940/3 MIXED TUMOUR, MALIGNANT		1	0	1	
9590/3 MALIGNANT LYMPHOMA		1	1	2	
9675/3 MALIGNANT LYMPHOMA, MIXED SMALL AND LARGE CELL, DIFFUSE		1	0	1	
	9686/3 MALIGNANT LYMPHOMA, LARGE CELL, FOLLICULAR	0	1	1	
C09	MALIGNANT NEOPLASM OF TONSIL	18	10	28	
	8000/3 NEOPLASM, MALIGNANT, NOS	1	0	1	
	8020/3 CARCINOMA, UNDIFFERENTIATED	1	0	1	
	8070/3 SQUAMOUS CELL CARCINOMA	14	2	16	
	8074/3 SQUAMOUS CELL CARCINOMA, SPINDLE CELL	1	0	1	
	8260/3 PAPILLARY ADENOCARCINOMA	0	1	1	
	9590/3 MALIGNANT LYMPHOMA	0	5	5	
	9675/3 MALIGNANT LYMPHOMA, MIXED SMALL AND LARGE CELL, DIFFUSE	1	1	2	
		9682/3 MALIGNANT LYMPHOMA, LARGE CELL, NONCLEAVED, DIFFUSE	0	1	1
C10	MALIGNANT NEOPLASM OF OROPHARYNX	3	0	3	
	8070/3 SQUAMOUS CELL CARCINOMA	2	0	2	
	9680/3 MALIGNANT LYMPHOMA, LARGE CELL DIFFUSE	1	0	1	
C11	MALIGNANT NEOPLASM OF NASOPHARYNX	60	33	93	
	8000/3 NEOPLASM, MALIGNANT, NOS	3	0	3	
	8020/3 CARCINOMA, UNDIFFERENTIATED	23	15	38	
	8070/3 SQUAMOUS CELL CARCINOMA	29	14	43	
	8072/3 SQUAMOUS CELL CARCINOMA, LARGE CELL, NONKERATINIZING	1	1	2	
	8140/3 ADENOCARCINOMA	1	1	2	
	8200/3 ADENOID CYSTIC CARCINOMA	1	0	1	
	9590/3 MALIGNANT LYMPHOMA	2	0	2	
	9675/3 MALIGNANT LYMPHOMA, MIXED SMALL AND LARGE CELL, DIFFUSE	0	1	1	
		9680/3 MALIGNANT LYMPHOMA, LARGE CELL, DIFFUSE	0	1	1
	C12	MALIGNANT NEOPLASM OF PYRIFORM SINUS	27	0	27
8010/2 CARCINOMA IN SITU		1	0	1	
8070/3 SQUAMOUS CELL CARCINOMA		26	0	26	
C13	MALIGNANT NEOPLASM OF HYPOPHARYNX	3	1	4	
	8070/3 SQUAMOUS CELL CARCINOMA	3	1	4	

		No. of Cases		
		MALE	FEMALE	TOTAL
C14	MALIGNANT NEOPLASM OF OTHER AND ILL-DEFINED SITE IN THE LIP, ORAL CAVITY AND PHARYNX	4	0	4
	8000/3 NEOPLASM, MALIGNANT, NOS	1	0	1
	8020/3 CARCINOMA, UNDIFFERENTIATED	1	0	1
	8070/3 SQUAMOUS CELL CARCINOMA	2	0	2
C15	MALIGNANT NEOPLASM OF OESOPHAGUS	50	13	63
	8000/3 NEOPLASM, MALIGNANT, NOS	3	1	4
	8010/3 CARCINOMA	0	1	1
	8070/3 SQUAMOUS CELL CARCINOMA	44	8	52
	8140/3 ADENOCARCINOMA	3	3	6
C16	MALIGNANT NEOPLASM OF STOMACH	32	44	76
	8000/3 NEOPLASM, MALIGNANT, NOS	3	2	5
	8020/3 CARCINOMA, UNDIFFERENTIATED	1	0	1
	8070/3 SQUAMOUS CELL CARCINOMA	2	0	2
	8140/3 ADENOCARCINOMA	22	33	55
	8481/3 MUCIN-PRODUCING ADENOCARCINOMA	1	0	1
	8490/3 SIGNET RING CELL CARCINOMA	2	3	5
	8830/3 FIBROUS HISTIOCYTOMA, MALIGNANT	0	1	1
	9590/3 MALIGNANT LYMPHOMA	1	3	4
	9680/3 MALIGNANT LYMPHOMA, LARGE CELL, DIFFUSE	0	2	2
C17	MALIGNANT NEOPLASM SMALL INTESTINE	6	2	8
	8070/3 SQUAMOUS CELL CARCINOMA	1	0	1
	8140/3 ADENOCARCINOMA	2	1	3
	8890/3 LEIOMYOSARCOMA	0	1	1
	9590/3 MALIGNANT LYMPHOMA	2	0	2
	9672/3 MALIGNANT LYMPHOMA SMALL CLEAVED, DIFFUSE	1	0	1
C18	MALIGNANT NEOPLASM OF COLON	82	100	182
	8000/3 NEOPLASM, MALIGNANT, NOS	3	1	4
	8020/3 CARCINOMA, UNDIFFERENTIATED	0	1	1
	8070/3 SQUAMOUS CELL CARCINOMA	0	1	1
	8140/3 ADENOCARCINOMA	74	96	170
	8480/3 MUCINOUS ADENOCARCINOMA	1	1	2
	8490/3 SIGNET RING CELL CARCINOMA	1	0	1
	8801/3 SPINDLE CELL SARCOMA	1	0	1
	8890/3 LEIOMYOSARCOMA	1	0	1
	9680/3 MALIGNANT LYMPHOMA, LARGE CELL, DIFFUSE	1	0	1
C19	MALIGNANT NEOPLASM OF RETOSIGMOID	8	11	19
	8000/3 NEOPLASM, MALIGNANT, NOS	0	1	1
	8140/3 ADENOCARCINOMA	8	10	18
C20	MALIGNANT NEOPLASM OF RECTUM	47	53	100
	8000/3 NEOPLASM, MALIGNANT, NOS	3	0	3
	8072/3 SQUAMOUS CELL CARCINOMA, LARGE CELL, NONKERATINIZING	0	1	1
	8140/3 ADENOCARCINOMA	43	49	92
	8480/3 MUCINOUS ADENOCARCINOMA	1	1	2
	8720/3 MALIGNANT MELANOMA	0	1	1
	9675/3 MALIGNANT LYMPHOMA, MIXED SMALL AND LARGE CELL, DIFFUSE	0	1	1
C21	MALIGNANT NEOPLASM OF ANUS AND ANAL CANAL	3	4	7
	8070/3 SQUAMOUS CELL CARCINOMA	3	4	7
	8140/3 ADENOCARCINOMA	2	0	2
	8490/3 SIGNET RING CELL CARCINOMA	1	0	1
C22	MALIGNANT NEOPLASM OF LIVER AND INTRAHEPATIC BILE DUCTS	117	35	152
	8000/3 NEOPLASM, MALIGNANT, NOS	2	1	3
	8160/3 CHOLANGIOCARCINOMA	27	13	40
	8170/3 HEPATOCELLULAR CARCINOMA	86	21	107
	9120/3 HAEMANGIOSARCOMA	1	0	1
	9685/3 MALIGNANT LYMPHOMA, LYMPHOBLASTIC	1	0	1
C23	MALIGNANT NEOPLASM OF GALL BLADDER	5	9	14
	8000/3 NEOPLASM, MALIGNANT, NOS	1	0	1
	8140/3 ADENOCARCINOMA	4	9	13
C24	MALIGNANT NEOPLASM OF OTHER AND UNSPECIFIED PARTS OF BILIARY TRACT	3	4	7
	8140/3 ADENOCARCINOMA	3	3	6
	8460/3 MUCINOUS ADENOCARCINOMA	0	1	1

		No. of Cases		
		MALE	FEMALE	TOTAL
C25	MALIGNANT NEOPLASM OF PANCREAS	13	18	31
	8000/3 NEOPLASM, MALIGNANT, NOS	6	11	17
	8140/3 ADENOCARCINOMA	6	6	12
	8480/3 MUCINOUS ADENOCARCINOMA	1	0	1
	8801/3 SPINDLE CELL SARCOMA	0	1	1
C30	MALIGNANT NEOPLASM OF NASAL CAVITY AND MIDDLE EAR	3	7	10
	8020/3 CARCINOMA, UNDIFFERENTIATED	0	1	1
	8070/3 SQUAMOUS CELL CARCINOMA	2	1	3
	8200/3 ADENOID CYSTIC CARCINOMA	0	1	1
	8430/3 MUCOEPIDERMAL CARCINOMA	0	1	1
	9590/3 MALIGNANT LYMPHOMA	1	2	3
	9680/3 MALIGNANT LYMPHOMA, LARGE CELL, DIFFUSE	0	1	1
C31	MALIGNANT NEOPLASM OF ACCESSORY SINUSES	3	3	6
	8020/3 CARCINOMA, UNDIFFERENTIATED	0	1	1
	8070/3 SQUAMOUS CELL CARCINOMA	2	0	2
	8072/3 SQUAMOUS CELL CARCINOMA, LARGE CELL, NONKERATINIZING	1	0	1
	8600/3 RHABDOMYOSARCOMA	0	1	1
	8640/3 MYXOSARCOMA	0	1	1
C32	MALIGNANT NEOPLASM OF LARYNX	38	6	44
	8000/3 NEOPLASM, MALIGNANT, NOS	2	1	3
	8070/2 SQUAMOUS CELL CARCINOMA IN SITU	2	0	2
	8070/3 SQUAMOUS CELL CARCINOMA	34	4	38
	8246/3 NEUROENDOCRINE CARCINOMA	0	1	1
C33-C34	MALIGNANT NEOPLASM OF TRACHEA BRONCHUS AND LUNG	194	79	273
	8000/3 NEOPLASM, MALIGNANT, NOS	15	4	19
	8010/3 CARCINOMA, NOS	2	0	2
	8020/3 CARCINOMA, UNDIFFERENTIATED	20	2	22
	8021/3 CARCINOMA, ANAPLASTIC	6	0	6
	8032/3 SPINDLE CELL CARCINOMA	1	0	1
	8041/3 SMALL CELL CARCINOMA	22	6	28
	8045/3 SMALL CELL-LARGE CELL CARCINOMA	1	0	1
	8070/3 SQUAMOUS CELL CARCINOMA	47	6	53
	8072/3 SQUAMOUS CELL CARCINOMA, LARGE CELL, NONKERATINIZING	1	0	1
	8140/3 ADENOCARCINOMA	78	56	134
	8246/3 NEUROENDOCRINE CARCINOMA	0	1	1
	8250/3 BRONCHIOLO-ALVEOLAR ADENOCARCINOMA	0	2	2
	8560/3 ADENOSQUAMOUS CARCINOMA	1	0	1
	8890/3 LEIOMYOSARCOMA	0	1	1
	9590/3 MALIGNANT LYMPHOMA	0	1	1
C37	MALIGNANT NEOPLASM OF THYMUS	1	1	2
	8580/3 THYMOMA, MALIGNANT	1	1	2
C38	MALIGNANT NEOPLASM OF HEART, MEDIASTINUM AND PLEURA	3	2	5
	8000/3 NEOPLASM, MALIGNANT, NOS	1	0	1
	9080/3 TERATOMA, MALIGNANT	1	0	1
	9085/3 MIXED GERM CELL TUMOUR	1	0	1
	9490/3 GANGLIONEUROBLASTOMA	0	1	1
	9671/3 MALIGNANT LYMPHOMA, LYMPHOPLASMACYTIC	0	1	1
C40-C41	MALIGNANT NEOPLASM OF BONE AND CARTILAGE	24	21	45
	9180/3 OSTEOSARCOMA	10	11	21
	9220/3 CHONDROSARCOMA	2	1	3
	9231/3 MYXOID CHONDROSARCOMA	1	1	2
	9250/3 GIANT CELL TUMOUR OF BONE, MALIGNANT	5	4	9
	9260/3 EWING'S SARCOMA	4	3	7
	9310/3 AMELOBLASTOMA, MALIGNANT	2	0	2
	9370/3 CHORDOMA	0	1	1
C43	MALIGNANT NEOPLASM OF SKIN	7	9	16
	8720/3 MALIGNANT MELANOMA	7	9	16
C44	OTHER MALIGNANT NEOPLASM OF SKIN	35	50	85
	8070/3 SQUAMOUS CELL CARCINOMA	13	16	29
	8081/2 BOWEN'S DISEASE	1	4	5
	8090/3 BASAL CELL CARCINOMA	19	26	45
	8094/3 BASOSQUAMOUS CARCINOMA	1	0	1

ICD-O-3	ICD-O-3	Description	No. of Cases		TOTAL
			MALE	FEMALE	
	8402/3	POROCARCINOMA	0	3	3
	8410/3	SEBACEOUS ADENOCARCINOMA	0	1	1
	8901/3	SPINDLE CELL SARCOMA	1	0	1
C45		MESOTHELIOMA	0	1	1
	9050/3	MESOTHELIOMA, MALIGNANT	0	1	1
C46		KAPOSI'S SARCOMA	1	0	1
	9140/3	KAPOSI'S SARCOMA	1	0	1
C47		MALIGNANT NEOPLASM OF PERIPHERAL NERVE AND AUTONOMIC NERVOUS SYSTEM	8	8	16
	9490/3	GANGLIONEUROBLASTOMA	1	0	1
	9500/3	NEUROBLASTOMA	6	8	14
	9560/3	NEURILEMMOMA, MALIGNANT	1	0	1
C48		MALIGNANT NEOPLASM OF RETROPERITONIUM AND PERITONIUM	2	0	2
	8830/3	FIBROUS HISTIOCYTOMA, MALIGNANT	1	0	1
	8990/3	LEIOMYOSARCOMA	1	0	1
C49		MALIGNANT NEOPLASM OF OTHER CONNECTIVE TISSUE AND SOFT TISSUE	20	18	38
	8900/3	SARCOMA	1	0	1
	8901/3	SPINDLE CELL SARCOMA	0	1	1
	8904/3	EPITHELIOID SARCOMA	1	0	1
	8830/3	FIBROUS HISTIOCYTOMA, MALIGNANT	5	1	6
	8850/3	LIPOSARCOMA	1	0	1
	8852/3	MYXOID LIPOSARCOMA	2	2	4
	8855/3	MIXED LIPOSARCOMA	1	0	1
	8890/3	LEIOMYOSARCOMA	3	5	8
	8900/3	RHABDOMYOSARCOMA	2	1	3
	8901/3	PLEOMORPHIC RHABDOMYOSARCOMA	1	0	1
	8910/3	EMBRYONAL RHABDOMYOSARCOMA	0	1	1
	8920/3	ALVEOLAR RHABDOMYOSARCOMA	1	0	1
	9120/3	HAEMANGIOSARCOMA	0	2	2
	9251/3	MALIGNANT GIANT CELL TUMOUR OF SOFT TISSUE	0	4	4
	9370/3	CHORDOMA	2	0	2
	9581/3	ALVEOLAR SOFT PART SARCOMA	0	1	1
C50		MALIGNANT NEOPLASM OF BREAST	5	466	471
	8000/3	NEOPLASM, MALIGNANT, NOS	2	31	33
	8050/3	PAPILLARY CARCINOMA	0	2	2
	8070/3	SQUAMOUS CELL CARCINOMA	0	1	1
	8140/3	ADENOCARCINOMA	0	7	7
	8480/3	MUCINOUS ADENOCARCINOMA	0	10	10
	8500/2	INTRADUCTAL CA NON-INFILTRATING	0	28	28
	8500/3	INFILTRATING DUCT CARCINOMA	3	374	377
	8510/3	MEDULLARY CARCINOMA	0	1	1
	8520/3	LOBULAR CARCINOMA	0	1	1
	9020/3	PHYLLODES TUMOUR, MALIGNANT	0	2	2
	9590/3	MALIGNANT LYMPHOMA	0	1	1
	9675/3	MALIGNANT LYMPHOMA, MIXED SMALL AND LARGE CELL, DIFFUSE	0	1	1
	9680/3	MALIGNANT LYMPHOMA, LARGE CELL, DIFFUSE	0	1	1
C51		MALIGNANT NEOPLASM OF VULVA	0	6	6
	8000/3	NEOPLASM, MALIGNANT, NOS	0	1	1
	8070/3	SQUAMOUS CELL CARCINOMA	0	4	4
	8071/3	SQUAMOUS CELL CARCINOMA, KERATINIZING	0	1	1
C52		MALIGNANT NEOPLASM OF VAGINA	0	17	17
	8000/3	NEOPLASM, MALIGNANT, NOS	0	1	1
	8070/3	SQUAMOUS CELL CARCINOMA	0	8	8
	8071/3	SQUAMOUS CELL CARCINOMA, KERATINIZING	0	1	1
	8072/3	SQUAMOUS CELL CARCINOMA, LARGE CELL, NONKERATINIZING	0	1	1
	8140/3	ADENOCARCINOMA	0	4	4
	8310/3	CLEAR CELL ADENOCARCINOMA	0	1	1
	8560/3	ADENOSQUAMOUS CARCINOMA	0	1	1
C53		MALIGNANT NEOPLASM OF CERVIX	0	560	560
	8000/3	NEOPLASM, MALIGNANT, NOS	0	23	23
	8010/2	CARCINOMA IN SITU	0	74	74
	8010/3	CARCINOMA	0	2	2
	8020/3	CARCINOMA, UNDIFFERENTIATED	0	2	2

ICD-9	ICD-10	DISEASE	No. of Cases		
			MALE	FEMALE	TOTAL
	8070/3	SQUAMOUS CELL CARCINOMA	0	118	118
	8071/3	SQUAMOUS CELL CARCINOMA, KERATINIZING	0	18	18
	8072/3	SQUAMOUS CELL CARCINOMA, LARGE CELL, NONKERATINIZING	0	209	209
	8075/3	ADENOID SQUAMOUS CELL CARCINOMA	0	3	3
	8140/3	ADENOCARCINOMA	0	88	88
	8246/3	NEUROENDOCRINE CARCINOMA	0	1	1
	8280/3	PAPILLARY ADENOCARCINOMA	0	6	6
	8580/3	ADENOSQUAMOUS CARCINOMA	0	15	15
C54-C55		MALIGNANT NEOPLASM OF CORPUS UTERI AND UTERUS PART UNSPECIFIED	0	75	75
	8140/3	ADENOCARCINOMA	0	64	64
	8280/3	PAPILLARY ADENOCARCINOMA	0	3	3
	8580/3	ADENOSQUAMOUS CARCINOMA	0	4	4
	8890/3	LEIOMYOSARCOMA	0	3	3
	8900/3	RHABDOMYOSARCOMA	0	1	1
C56		MALIGNANT NEOPLASM OF OVARY	0	130	130
	8000/3	NEOPLASM, MALIGNANT, NOS	0	4	4
	8070/3	SQUAMOUS CELL CARCINOMA	0	2	2
	8140/3	ADENOCARCINOMA	0	33	33
	8280/3	PAPILLARY ADENOCARCINOMA	0	2	2
	8310/3	CLEAR CELL ADENOCARCINOMA	0	20	20
	8380/3	ENDOMETRIOID CARCINOMA	0	12	12
	8441/3	SEROUS CYSTADENOCARCINOMA	0	9	9
	8450/3	PAPILLARY CYSTADENOCARCINOMA	0	1	1
	8460/3	PAPILLARY SEROUS CYSTADENOCARCINOMA	0	8	8
	8470/3	MUCINOUS CYSTADENOCARCINOMA	0	26	26
	8560/3	ADENOSQUAMOUS CARCINOMA	0	2	2
	8620/3	GRANULOSA CELL TUMOUR	0	1	1
	9000/3	BRENNER TUMOUR, MALIGNANT	0	2	2
	9080/3	DYSGERMINOMA	0	3	3
	9071/3	ENDODERMAL SINUS TUMOUR	0	1	1
	9080/3	TERATOMA, MALIGNANT	0	2	2
	9085/3	MIXED GERM CELL TUMOUR	0	1	1
	9090/3	STRUMA OVARII, MALIGNANT	0	1	1
C58		MALIGNANT NEOPLASM OF PLACENTA	0	2	2
	9100/3	CHORIOCARCINOMA	0	2	2
C60		MALIGNANT NEOPLASM OF PENIS	18	0	18
	8070/3	SQUAMOUS CELL CARCINOMA	18	0	18
C61		MALIGNANT NEOPLASM OF PROSTATE	146	0	146
	8000/3	NEOPLASM, MALIGNANT, NOS	7	0	7
	8140/3	ADENOCARCINOMA	139	0	139
C62		MALIGNANT NEOPLASM OF TESTIS	2	0	2
	9061/3	SEMINOMA	2	0	2
C64		MALIGNANT NEOPLASM OF KIDNEY	16	12	28
	8312/3	RENAL CELL CARCINOMA	14	9	23
	8960/3	NEPHROBLASTOMA (WILM'S TUMOUR)	1	3	4
	8964/3	CLEAR CELL SARCOMA OF KIDNEY	1	0	1
C65		MALIGNANT NEOPLASM OF RENAL PELVIS	5	3	8
	8120/3	TRANSITIONAL CELL CARCINOMA	5	3	8
C66		MALIGNANT NEOPLASM OF URETER	2	0	2
	8120/3	TRANSITIONAL CELL CARCINOMA	2	0	2
C67-C68		MALIGNANT NEOPLASM OF BLADDER AND OF OTHER AND UNSPECIFIED PART OF URINARY ORGANS	83	20	103
	8000/3	NEOPLASM, MALIGNANT, NOS	1	0	1
	8070/3	SQUAMOUS CELL CARCINOMA	2	0	2
	8120/3	TRANSITIONAL CELL CARCINOMA	79	16	95
	8140/3	ADENOCARCINOMA	1	4	5
C69		MALIGNANT NEOPLASM OF EYE AND ADNEXA	6	13	19
	8000/3	NEOPLASM, MALIGNANT, NOS	1	0	1
	8070/2	SQUAMOUS CELL CARCINOMA IN SITU	1	0	1
	8070/3	SQUAMOUS CELL CARCINOMA	0	2	2
	8720/3	MALIGNANT MELANOMA	3	3	6
	9150/3	HAEMANGIOPERICYTOMA, MALIGNANT	0	2	2

		No. of Cases			
		MALE	FEMALE	TOTAL	
	9510/3	RETINOBLASTOMA	1	2	3
	9590/3	MALIGNANT LYMPHOMA	0	1	1
	9670/3	MALIGNANT LYMPHOMA, SMALL LYMPHOCYTIC	0	2	2
	9680/3	MALIGNANT LYMPHOMA, LARGE CELL, DIFFUSE	0	1	1
C70		MALIGNANT NEOPLASM OF MENINGES	0	4	4
	9530/3	MENINGIOMA, MALIGNANT	0	4	4
C71		MALIGNANT NEOPLASM OF BRAIN	20	27	47
	8000/3	NEOPLASM, MALIGNANT, NOS	2	0	2
	9064/3	GERMINOMA	2	0	2
	9150/3	HAEMANGIOPERICYTOMA, MALIGNANT	0	1	1
	9364/3	PERIPHERAL NEUROECTODERMAL TUMOUR	0	1	1
	9380/3	GLIOMA, MALIGNANT	1	0	1
	9391/3	EPENDYMOMA	0	3	3
	9400/3	ASTROCYTOMA	5	7	12
	9401/3	ASTROCYTOMA, ANAPLASTIC	2	1	3
	9440/3	GLIOBLASTOMA	4	6	10
	9450/3	OLIGODENDROGLIOMA	0	2	2
	9470/3	MEDULLOBLASTOMA	3	4	7
	9503/3	NEUROEPITHELIOMA	1	0	1
	9590/3	MALIGNANT LYMPHOMA	0	1	1
	9680/3	MALIGNANT LYMPHOMA, LARGE CELL, DIFFUSE	0	1	1
C73		MALIGNANT NEOPLASM OF THYROID	15	49	64
	8000/3	NEOPLASM, MALIGNANT, NOS	0	1	1
	8010/3	CARCINOMA	1	1	2
	8021/3	CARCINOMA, ANAPLASTIC	2	1	3
	8050/3	PAPILLARY CARCINOMA	8	38	46
	8290/3	OXYPHILIC ADENOCARCINOMA	0	1	1
	8330/3	FOLLICULAR ADENOCARCINOMA	1	6	7
	8510/3	MEDULLARY CARCINOMA	2	0	2
	9590/3	MALIGNANT LYMPHOMA	1	1	2
C74		MALIGNANT NEOPLASM OF ADRENAL GLAND	1	3	4
	8370/3	ADRENAL CORTICAL CARCINOMA	1	2	3
	8700/3	PHEOCHROMOCYTOMA, MALIGNANT	0	1	1
C75		MALIGNANT NEOPLASM OF OTHER ENDOCRINE GLANDS AND RELATE STRUCTURES	6	1	7
	8000/3	NEOPLASM, MALIGNANT, NOS	2	0	2
	8140/3	ADENOCARCINOMA	0	1	1
	9064/3	GERMINOMA	3	0	3
	9080/3	TERATOMA, MALIGNANT	1	0	1
C76-C80		MALIGNANT NEOPLASM WITHOUT SPECIFIED SITE AND METASTATIC MALIGNANT IN VARIOUS SITES	118	109	227
	8000/3	NEOPLASM, MALIGNANT, NOS	7	6	13
	8002/3	MALIGNANT TUMOUR, SMALL CELL TYPE	7	0	7
	8010/3	CARCINOMA	1	3	4
	8020/3	CARCINOMA, UNDIFFERENTIATED	6	9	15
	8021/3	CARCINOMA, ANAPLASTIC	1	0	1
	8032/3	SPINDLE CELL CARCINOMA	1	0	1
	8041/3	SMALL CELL CARCINOMA	3	1	4
	8050/3	PAPILLARY CARCINOMA	0	1	1
	8070/3	SQUAMOUS CELL CARCINOMA	9	11	20
	8120/3	TRANSITIONAL CELL CARCINOMA	0	1	1
	8140/3	ADENOCARCINOMA	71	70	141
	8200/3	ADENOID CYSTIC CARCINOMA	2	1	3
	8246/3	NEUROENDOCRINE CARCINOMA	2	0	2
	8260/3	PAPILLARY ADENOCARCINOMA	2	3	5
	8310/3	CLEAR CELL ADENOCARCINOMA	1	0	1
	8430/3	MUCOEPIDERMAL CARCINOMA	0	1	1
	8440/3	CYSTADENOCARCINOMA	1	0	1
	8480/3	MUCINOUS ADENOCARCINOMA	1	0	1
	8490/3	SIGNET RING CELL CARCINOMA	1	0	1
	8560/3	ADENOSQUAMOUS CARCINOMA	0	1	1
	8800/3	SARCOMA	1	0	1
	8801/3	SPINDLE CELL SARCOMA	2	0	2

		No. of Cases		
		MALE	FEMALE	TOTAL
	9054/3 GERMINOMA	0	1	1
	9080/3 TERATOMA, MALIGNANT	1	0	1
	9085/3 MIXED GERM CELL TUMOUR	2	0	2
	9280/3 EWING'S SARCOMA	2	0	2
C81	HODGKIN'S DISEASE	3	4	7
	9650/3 HODGKIN'S DISEASE	2	4	6
	9652/3 HODGKIN'S DISEASE, MIXED CELLULARITY	1	0	1
C82	FOLLICULAR NON-HODGKIN'S LYMPHOMA	1	2	3
	9590/3 MALIGNANT LYMPHOMA	1	0	1
	9698/3 MALIGNANT LYMPHOMA, LARGE CELL, FOLLICULAR	0	2	2
C83	DIFFUSE NON-HODGKIN'S LYMPHOMA	35	31	66
	9591/3 MALIGNANT LYMPHOMA, NON-HODGKIN'S	1	0	1
	9595/3 MALIGNANT LYMPHOMA DIFFUSE	1	1	2
	9670/3 MALIGNANT LYMPHOMA, SMALL LYMPHOCYTIC	2	1	3
	9671/3 MALIGNANT LYMPHOMA, LYMPHOPLASMATIC	1	0	1
	9672/3 MALIGNANT LYMPHOMA, SMALL CLEAVED CELL DIFFUSE	1	1	2
	9675/3 MALIGNANT LYMPHOMA, MIXED SMALL AND LARGE CELL	10	11	21
	9680/3 MALIGNANT LYMPHOMA, LARGE CELL, DIFFUSE	15	16	31
	9687/3 BURKITT'S LYMPHOMA	1	0	1
C84	PERIPHERAL AND CUTANEOUS T-CELL LYMPHOMA	4	3	7
	9702/3 PERIPHERAL T-CELL LYMPHOMA	1	0	1
	9705/3 PERIPHERAL T-CELL LYMPHOMA, ALLD	2	2	4
	9827/3 ADULT T-CELL LEUKAEMIA LYMPHOMA	1	1	2
C85	OTHER AND UNSPECIFIED TYPE OF NON-HODGKIN LYMPHOMA	71	60	131
	9590/3 MALIGNANT LYMPHOMA	71	60	131
C90	MULTIPLE MYELOMA AND MALIGNANT PLASMA CELL NEOPLASM	27	16	43
	9731/3 PLASMACYTOMA	1	1	2
	9732/3 MULTIPLE MYELOMA	26	15	41
C91	LYMPHOID LEUKAEMIA	64	45	109
	9821/3 ACUTE LYMPHOBLASTIC LEUKAEMIA	48	41	89
	9823/3 CHRONIC LYMPHOCYTIC LEUKAEMIA	16	4	20
C92	MYELOID LEUKAEMIA	58	56	114
	9861/3 ACUTE MYELOID LEUKAEMIA	19	29	48
	9863/3 CHRONIC MYELOID LEUKAEMIA	35	20	55
	9866/3 ACUTE PROMYELOCYTIC LEUKAEMIA	4	4	8
	9867/3 ACUTE MYELOMONOCYTIC LEUKAEMIA	0	3	3
C93	MONOCYTIC LEUKAEMIA	2	2	4
	9891/3 ACUTE MONOCYTIC LEUKAEMIA	2	2	4
C94-C95	OTHER SPECIFIED AND UNSPECIFIED LEUKAEMIA	11	11	22
	9801/3 ACUTE LEUKAEMIA	10	10	20
	9932/3 ACUTE MYELOFIBROSIS	1	1	2
C96	OTHER AND UNSPECIFIED MALIGNANT NEOPLASM OF LYMPHOID, HAEMATOLOGIC AND RELATED TISSUE	1	4	5
	9720/3 MALIGNANT HISTIOCYTOSIS	1	4	5

**TABLE VI
THE TEN LEADING SITES**

Site	M	F	T	%
All Sites	1641	2340	3981	100
Cervix	0	560	560	14.07
Breast	5	466	471	11.83
Colon Rectum	137	164	301	7.56
Lung	194	79	273	6.86
Leukaemia	136	118	254	6.38
Lymphoma	108	95	203	5.10
Oral cavity	92	63	155	3.89
Liver	117	35	152	3.82
Prostate	146	0	146	3.67
Ovary	0	130	130	3.27

**TABLE VII
THE TEN LEADING SITES**

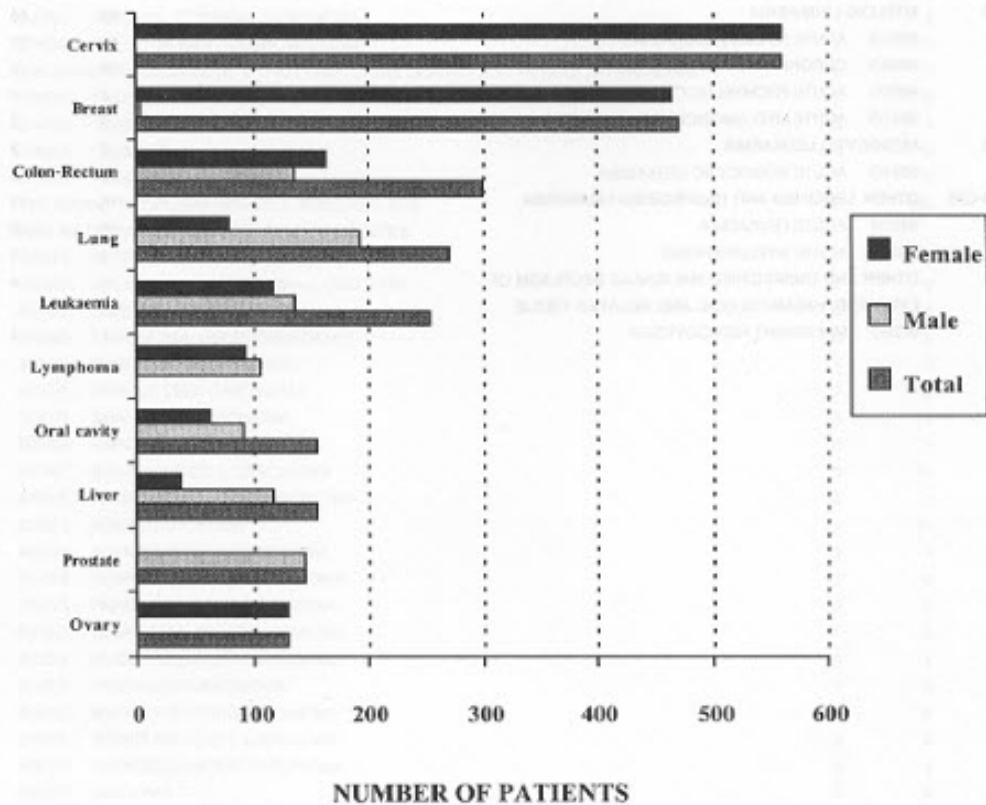


TABLE VII
MALIGNANT NEOPLASM IN CHILDHOOD

Code		No. of cases			>0-4		5-9		10-15	
		Total	M	F	M	F	M	F	M	F
Total		125	69	56	25	22	26	16	18	18
C11	Nasopharynx	2	2	0	0	0	0	0	2	0
C17	Small intestine	1	1	0	0	0	1	0	0	0
C18-C21	Colon, Rectum	1	1	0	0	0	0	0	1	0
C37-C39	Heart and medias	1	0	1	0	0	0	1	0	0
C40-C41	Bone and joint	7	4	3	0	0	1	0	3	3
C45-C49	Soft tissue	14	7	7	5	6	2	1	0	0
C56-C57	Ovary and adnexa	2	0	2	0	0	0	0	0	2
C64-C65	Kidney	2	1	1	1	1	0	0	0	0
C66-C68	Urinary bladder	1	1	0	1	0	0	0	0	0
C69	Eey and adnexa	3	1	2	1	2	0	0	0	0
C71-C72	Brain and cord	9	5	4	1	2	4	0	0	2
C73	Thyroid	1	1	0	0	0	0	0	1	0
C74-C75	Endocrine gland	2	1	1	0	1	0	0	1	0
C76-C80	Ill defined site	5	2	3	1	0	0	1	1	2
C81	Hodgkin 's disease	1	0	1	0	0	0	1	0	0
C80-C89	Lymphoma	9	8	1	1	0	3	0	4	1
C91	Lymphoid leukaemia	49	27	22	13	8	9	7	5	7
C92	Myeloid leukemia	12	5	7	1	2	4	4	0	1
C94-CC96	Other leukemia	3	2	1	0	0	2	1	0	0

TABLE VIII
PRIMARY SITES AS TO AGE AND SEX

SITE / Age-Group	NUMBER OF PATIENTS															Unknown								
	Under 1	1+	5+	10+	15+	20+	25+	30+	35+	40+	45+	50+	55+	60+	65+		70+	75+	80+	85+	90+	95+		
GRAND TOTAL	3981	0	47	42	36	40	70	91	104	264	381	437	431	424	430	415	314	209	107	42	14	3	0	
MALE	1641	0	25	26	18	28	27	36	58	64	97	126	161	179	193	222	162	117	66	25	9	2	0	
FEMALE	2340	0	22	16	18	12	43	55	126	200	284	311	270	245	237	193	152	92	41	17	5	1	0	
Upper lip	T	1	0	0	0	0	0	0	0	0	0	0	0	0	0	0	0	0	0	0	0	0	0	0
	M	0	0	0	0	0	0	0	0	0	0	0	0	0	0	0	0	0	0	0	0	0	0	0
	F	1	0	0	0	0	0	0	0	0	0	0	0	0	0	0	0	0	0	0	0	0	0	0
Lower lip	T	13	0	0	0	0	1	0	0	0	0	0	0	0	2	5	1	3	0	1	0	0	0	0
	M	3	0	0	0	0	1	0	0	0	0	0	0	0	1	1	0	0	0	0	0	0	0	0
	F	10	0	0	0	0	0	0	0	0	0	0	0	0	2	4	0	3	0	1	0	0	0	0
Lip, unspecified	T	1	0	0	0	0	0	0	0	0	0	0	0	0	0	0	0	0	0	0	0	0	0	0
	M	1	0	0	0	0	0	0	0	0	0	0	0	0	0	0	0	0	0	0	0	0	0	0
	F	0	0	0	0	0	0	0	0	0	0	0	0	0	0	0	0	0	0	0	0	0	0	0
Base of tongue	T	25	0	0	0	0	0	0	0	0	3	2	4	3	2	4	3	4	3	0	1	0	0	0
	M	21	0	0	0	0	0	0	0	0	3	2	1	4	2	3	3	2	0	1	0	0	0	0
	F	4	0	0	0	0	0	0	0	0	0	0	0	0	1	0	1	0	1	0	0	0	0	0
Tongue, unspecified	T	54	0	0	0	0	0	3	0	3	2	4	10	4	7	8	8	3	1	1	0	0	0	0
	M	31	0	0	0	0	0	1	0	3	1	3	6	3	4	3	5	1	0	1	0	0	0	0
	F	23	0	0	0	0	0	2	0	0	1	1	4	1	3	5	3	2	1	0	0	0	0	0
Gum	T	20	0	0	0	0	0	1	1	1	2	3	2	2	2	2	4	1	0	1	0	0	0	0
	M	12	0	0	0	0	0	0	1	1	2	1	2	1	0	4	0	0	0	0	0	0	0	0
	F	8	0	0	0	0	0	1	0	0	0	0	0	0	1	2	0	1	0	1	0	0	0	0
Floor of mouth	T	10	0	0	0	0	0	0	0	0	0	0	1	3	2	2	1	1	0	0	0	0	0	0
	M	8	0	0	0	0	0	0	0	0	0	0	1	3	1	2	1	0	0	0	0	0	0	0
	F	2	0	0	0	0	0	0	0	0	0	0	0	0	0	1	0	0	1	0	0	0	0	0
Palate	T	15	0	0	0	0	0	1	0	0	2	0	1	2	3	3	0	0	0	0	0	0	0	0
	M	12	0	0	0	0	0	1	0	0	2	0	1	1	2	3	2	0	0	0	0	0	0	0
	F	3	0	0	0	0	0	0	0	0	0	0	0	0	0	1	1	0	1	0	0	0	0	0

SITE / Age-Group	Under 1	1+	5+	10+	15+	20+	25+	30+	35+	40+	45+	50+	55+	60+	65+	70+	75+	80+	85+	90+	95+	Unknown	
Buccal mucosa	T 16	0	0	0	0	0	0	0	1	0	2	0	1	2	2	2	3	0	1	1	0	1	0
	M 4	0	0	0	0	0	0	0	1	0	0	1	1	1	0	0	0	0	0	0	0	0	0
	F 12	0	0	0	0	0	0	0	2	0	0	1	1	2	3	0	1	1	0	1	0	1	0
Parotid gland	T 11	0	0	0	0	1	1	0	2	0	1	1	2	0	0	2	0	1	0	0	0	0	0
	M 8	0	0	0	0	1	1	0	1	0	0	1	2	0	0	1	0	1	0	0	0	0	0
	F 3	0	0	0	0	0	0	1	0	1	0	0	0	0	0	1	0	0	0	0	0	0	0
Salivary gland, unspecified	T 6	0	0	0	0	0	0	0	1	1	1	0	1	1	0	1	1	1	0	0	0	0	0
	M 4	0	0	0	0	0	0	0	0	1	0	1	0	1	0	1	1	0	0	0	0	0	0
	F 2	0	0	0	0	0	0	0	0	0	0	1	0	0	0	0	1	0	0	0	0	0	0
Tonsil	T 28	0	0	0	0	0	0	0	2	4	2	3	4	8	1	1	0	3	0	0	0	0	0
	M 18	0	0	0	0	0	0	0	2	3	2	2	2	4	0	1	0	2	0	0	0	0	0
	F 10	0	0	0	0	0	0	0	1	0	1	2	4	1	0	0	1	0	0	1	0	0	0
Oropharynx	T 3	0	0	0	0	0	0	0	0	0	0	0	0	1	0	1	1	0	0	0	0	0	0
	M 3	0	0	0	0	0	0	0	0	0	0	0	0	1	0	1	1	0	0	0	0	0	0
	F 0	0	0	0	0	0	0	0	0	0	0	0	0	0	0	0	0	0	0	0	0	0	0
Nasopharynx	T 93	0	0	0	2	1	1	5	7	8	13	13	10	11	6	2	1	0	0	0	0	0	0
	M 60	0	0	0	2	1	0	3	3	2	9	10	10	5	9	4	1	1	0	0	0	0	0
	F 33	0	0	0	0	1	2	4	6	4	3	3	5	2	2	1	0	0	0	0	0	0	0
Pyiform sinus	T 27	0	0	0	0	0	0	0	0	1	5	3	4	6	4	1	1	1	1	0	0	0	0
	M 27	0	0	0	0	0	0	0	0	1	5	3	4	6	4	1	1	1	1	0	0	0	0
	F 0	0	0	0	0	0	0	0	0	0	0	0	0	0	0	0	0	0	0	0	0	0	0
Hypopharynx	T 4	0	0	0	0	0	0	0	0	1	0	1	2	0	0	0	0	0	0	0	0	0	0
	M 3	0	0	0	0	0	0	0	0	1	0	1	1	0	0	0	0	0	0	0	0	0	0
	F 1	0	0	0	0	0	0	0	0	0	0	0	1	0	0	0	0	0	0	0	0	0	0
Oral and pharynx unspecified	T 4	0	0	0	0	0	0	0	0	1	0	0	1	1	1	0	0	0	0	0	0	0	0
	M 4	0	0	0	0	0	0	0	0	1	0	0	1	1	1	0	0	0	0	0	0	0	0
	F 0	0	0	0	0	0	0	0	0	0	0	0	0	0	0	0	0	0	0	0	0	0	0
Esophagus	T 63	0	0	0	0	0	0	0	2	1	3	3	8	9	14	11	7	3	2	0	0	0	0
	M 50	0	0	0	0	0	0	0	2	1	3	3	8	8	10	7	3	3	2	0	0	0	0
	F 13	0	0	0	0	0	0	0	0	0	0	0	1	4	4	4	4	0	0	0	0	0	0
Stomach	T 76	0	0	0	0	0	0	1	2	6	6	8	7	11	14	10	6	5	0	0	0	0	0
	M 32	0	0	0	0	0	0	1	2	1	2	3	5	7	7	2	2	0	0	0	0	0	0
	F 44	0	0	0	0	0	0	1	1	4	5	6	4	6	7	3	4	3	0	0	0	0	0

SITE / Age-Group	Under 1																Unknown						
	1+	5+	10+	15+	20+	25+	30+	35+	40+	45+	50+	55+	60+	65+	70+	75+		80+	85+	90+	95+		
Small intestine	T	8	0	0	0	0	0	0	0	0	0	0	0	0	2	3	1	0	0	0	0	0	0
	M	6	0	0	0	0	0	0	0	0	0	0	0	0	2	1	1	0	0	0	0	0	0
	F	2	0	0	0	0	0	0	0	0	0	0	0	0	0	2	0	0	0	0	0	0	0
Colon	T	182	0	0	0	1	1	2	2	7	8	13	15	25	27	27	16	18	13	4	2	0	0
	M	82	0	0	0	1	1	0	0	1	4	4	9	6	7	11	12	5	11	10	0	0	0
	F	100	0	0	0	0	1	2	1	3	4	4	9	18	16	15	11	7	3	4	2	0	0
Rectosigmoid	T	19	0	0	0	0	0	0	0	2	0	1	1	2	2	3	2	2	3	0	0	0	0
	M	8	0	0	0	0	0	0	0	1	0	0	1	2	0	0	1	2	0	0	0	0	0
	F	11	0	0	0	0	0	0	0	1	0	1	0	0	2	3	1	0	3	0	0	0	0
Rectum	T	100	0	0	0	0	0	2	3	4	4	6	10	13	9	19	20	5	2	0	3	0	0
	M	47	0	0	0	0	0	1	1	2	2	3	2	7	4	11	12	1	0	0	1	0	0
	F	53	0	0	0	0	0	1	2	2	2	3	8	6	5	8	8	4	2	0	2	0	0
Anus and anal canal	T	7	0	0	0	0	0	0	0	1	0	2	1	1	0	1	0	0	0	0	0	0	0
	M	3	0	0	0	0	0	0	0	0	0	0	0	0	1	0	1	0	0	0	0	0	0
	F	4	0	0	0	0	0	0	0	1	0	2	1	0	0	0	0	0	0	0	0	0	0
Liver	T	152	0	0	0	0	0	2	5	8	14	19	21	26	23	13	13	6	1	1	0	0	0
	M	117	0	0	0	0	0	1	5	6	12	13	17	22	17	10	7	6	0	1	0	0	0
	F	35	0	0	0	0	0	1	0	2	2	6	4	4	6	3	6	0	1	0	0	0	0
Gall bladder	T	14	0	0	0	0	0	0	1	1	0	1	1	1	2	1	1	2	3	0	0	0	0
	M	5	0	0	0	0	0	0	0	0	0	1	0	1	1	0	0	1	1	0	0	0	0
	F	9	0	0	0	0	0	0	1	1	0	0	1	0	1	1	1	1	2	0	0	0	0
Biliary tract	T	7	0	0	0	0	0	0	1	1	0	0	0	2	1	0	1	0	1	0	0	0	0
	M	3	0	0	0	0	0	0	0	0	0	0	0	1	0	0	0	0	0	0	0	0	0
	F	4	0	0	0	0	0	0	1	0	1	0	0	1	0	0	1	0	0	0	0	0	0
Pancreas	T	31	0	0	0	0	0	1	0	1	0	2	7	1	4	5	4	2	3	1	0	0	0
	M	13	0	0	0	0	0	0	0	0	0	2	1	2	1	3	1	2	1	0	0	0	0
	F	18	0	0	0	0	0	1	0	1	0	2	5	0	2	4	1	1	1	0	0	0	0
Nasal cavity and middle ear	T	10	0	0	0	0	0	0	0	0	0	1	2	2	0	1	0	2	2	0	0	0	0
	M	3	0	0	0	0	0	0	0	0	0	0	2	0	0	0	0	1	0	0	0	0	0
	F	7	0	0	0	0	0	0	0	0	0	1	2	0	0	1	0	2	1	0	0	0	0
Accessory sinus	T	6	0	0	0	0	0	1	0	1	0	0	0	0	2	0	1	0	0	0	0	0	0
	M	3	0	0	0	0	0	0	0	0	0	1	0	0	1	0	1	0	0	0	0	0	0
	F	3	0	0	0	0	0	0	0	1	0	0	0	0	1	0	0	0	0	0	0	0	0

SITE / Age-Group		Under 1	1+	5+	10+	15+	20+	25+	30+	35+	40+	45+	50+	55+	60+	65+	70+	75+	80+	85+	90+	95+	Unknown
Larynx	T	44	0	0	0	0	0	0	2	0	3	5	6	8	10	4	3	3	0	0	0	0	0
Larynx	M	38	0	0	0	0	0	0	2	0	2	4	6	5	10	3	3	3	0	0	0	0	0
Larynx	F	6	0	0	0	0	0	0	0	0	1	1	0	3	0	1	0	0	0	0	0	0	0
Lung and trachea	T	273	0	0	0	1	2	3	7	20	27	32	35	33	42	31	25	9	4	0	1	0	0
Lung and trachea	M	194	0	0	0	1	2	2	4	11	18	24	27	23	30	22	19	7	2	0	1	0	0
Lung and trachea	F	79	0	0	0	0	0	1	3	9	9	8	8	10	12	9	6	2	2	0	0	0	0
Thymus	T	2	0	0	0	0	0	0	0	0	0	0	1	0	0	0	1	0	0	0	0	0	0
Thymus	M	1	0	0	0	0	0	0	0	0	0	0	1	0	0	0	0	0	0	0	0	0	0
Thymus	F	1	0	0	0	0	0	0	0	0	0	0	0	0	0	0	1	0	0	0	0	0	0
Mediastinum	T	5	0	0	1	1	0	0	1	0	1	0	0	0	0	0	0	0	0	0	0	0	0
Mediastinum	M	3	0	0	0	1	0	0	1	0	1	0	0	0	0	0	0	0	0	0	0	0	0
Mediastinum	F	2	0	0	1	0	0	0	0	0	0	0	0	0	0	0	0	0	0	0	0	0	0
Bone and joint	T	46	0	0	1	6	5	9	6	2	7	3	1	0	2	2	1	0	1	0	0	0	0
Bone and joint	M	24	0	0	1	3	3	4	3	1	3	1	1	0	2	1	1	0	0	0	0	0	0
Bone and joint	F	22	0	0	3	2	5	3	1	4	2	0	0	0	1	0	0	1	0	0	0	0	0
Melanoma of skin	T	16	0	0	0	0	0	0	1	0	2	2	4	1	2	2	0	1	0	0	1	0	0
Melanoma of skin	M	7	0	0	0	0	0	0	0	0	1	0	2	0	2	1	0	1	0	0	0	0	0
Melanoma of skin	F	9	0	0	0	0	0	0	1	0	1	2	2	1	0	1	0	0	0	0	1	0	0
Skin	T	85	0	0	0	0	0	0	0	2	5	7	7	9	10	8	16	10	5	5	1	0	0
Skin	M	35	0	0	0	0	0	0	0	1	2	1	4	4	5	5	5	5	1	1	1	0	0
Skin	F	50	0	0	0	0	0	0	0	1	3	6	3	5	5	3	11	6	4	4	0	0	0
Mesothelioma	T	1	0	0	0	0	0	0	1	0	0	0	0	0	0	0	0	0	0	0	0	0	0
Mesothelioma	M	0	0	0	0	0	0	0	0	0	0	0	0	0	0	0	0	0	0	0	0	0	0
Mesothelioma	F	1	0	0	0	0	0	0	1	0	0	0	0	0	0	0	0	0	0	0	0	0	0
Kaposi's sarcoma	T	1	0	0	0	0	0	0	0	0	1	0	0	0	0	0	0	0	0	0	0	0	0
Kaposi's sarcoma	M	1	0	0	0	0	0	0	0	0	0	1	0	0	0	0	0	0	0	0	0	0	0
Kaposi's sarcoma	F	0	0	0	0	0	0	0	0	0	0	0	0	0	0	0	0	0	0	0	0	0	0
Peripheral nerve	T	16	0	9	3	0	0	1	0	0	0	1	1	0	0	0	1	0	0	0	0	0	0
Peripheral nerve	M	8	0	4	2	0	0	0	0	0	1	1	0	0	0	0	0	0	0	0	0	0	0
Peripheral nerve	F	8	0	5	1	0	0	1	0	0	0	0	0	0	0	0	1	0	0	0	0	0	0
Retro and peritoneum	T	2	0	0	0	0	0	0	0	0	0	0	1	0	1	0	0	0	0	0	0	0	0
Retro and peritoneum	M	2	0	0	0	0	0	0	0	0	0	0	1	0	1	0	0	0	0	0	0	0	0
Retro and peritoneum	F	0	0	0	0	0	0	0	0	0	0	0	0	0	0	0	0	0	0	0	0	0	0

	Under 1	1+	5+	10+	15+	20+	25+	30+	35+	40+	45+	50+	55+	60+	65+	70+	75+	80+	85+	90+	95+	Unknown
T	37	0	2	0	0	1	4	3	1	4	4	5	2	3	0	5	2	0	1	0	0	0
M	20	0	1	0	0	1	2	0	1	2	3	3	0	1	0	4	1	0	1	0	0	0
F	17	0	1	0	0	0	2	3	0	2	1	2	2	2	0	1	1	0	0	0	0	0
T	471	0	0	0	0	1	4	32	54	77	88	79	53	30	27	11	11	4	0	0	0	0
M	5	0	0	0	0	0	0	0	1	0	1	2	0	1	0	0	0	0	0	0	0	0
F	466	0	0	0	0	1	4	32	53	77	87	77	53	29	27	11	11	4	0	0	0	0
T	6	0	0	0	0	0	0	1	0	0	1	0	1	0	1	0	2	0	0	0	0	0
M	0	0	0	0	0	0	0	0	0	0	0	0	0	0	0	0	0	0	0	0	0	0
F	6	0	0	0	0	0	0	1	0	0	1	0	1	0	1	0	2	0	0	0	0	0
T	17	0	0	0	0	0	1	0	0	3	1	4	0	1	3	1	2	0	1	0	0	0
M	0	0	0	0	0	0	0	0	0	0	0	0	0	0	0	0	0	0	0	0	0	0
F	17	0	0	0	0	1	0	0	3	1	4	0	1	3	1	2	0	1	0	0	0	0
T	560	0	0	0	0	7	15	43	75	96	78	67	55	54	37	23	8	2	0	0	0	0
M	0	0	0	0	0	0	0	0	0	0	0	0	0	0	0	0	0	0	0	0	0	0
F	560	0	0	0	0	7	15	43	75	96	78	67	55	54	37	23	8	2	0	0	0	0
T	71	0	0	0	0	0	2	1	7	11	6	18	12	8	4	1	1	0	0	0	0	0
M	0	0	0	0	0	0	0	0	0	0	0	0	0	0	0	0	0	0	0	0	0	0
F	71	0	0	0	0	0	2	1	7	11	6	18	12	8	4	1	1	0	0	0	0	0
T	4	0	0	0	0	0	0	0	0	1	2	0	0	0	0	0	1	0	0	0	0	0
M	0	0	0	0	0	0	0	0	0	0	0	0	0	0	0	0	0	0	0	0	0	0
F	4	0	0	0	0	0	0	0	0	1	2	0	0	0	0	0	1	0	0	0	0	0
T	130	0	0	0	2	1	3	3	5	11	18	28	14	16	14	5	6	2	2	0	0	0
M	0	0	0	0	0	0	0	0	0	0	0	0	0	0	0	0	0	0	0	0	0	0
F	130	0	0	0	2	1	3	3	5	11	18	28	14	16	14	5	6	2	2	0	0	0
T	2	0	0	0	0	1	0	0	0	1	0	0	0	0	0	0	0	0	0	0	0	0
M	0	0	0	0	0	0	0	0	0	0	0	0	0	0	0	0	0	0	0	0	0	0
F	2	0	0	0	0	1	0	0	0	1	0	0	0	0	0	0	0	0	0	0	0	0
T	18	0	0	0	0	1	0	1	1	2	1	0	3	5	4	0	0	0	0	0	0	0
M	18	0	0	0	0	1	0	1	1	2	1	0	3	5	4	0	0	0	0	0	0	0
F	0	0	0	0	0	0	0	0	0	0	0	0	0	0	0	0	0	0	0	0	0	0
T	146	0	0	0	0	0	0	0	0	0	0	0	7	14	17	27	22	21	12	3	1	0
M	146	0	0	0	0	0	0	0	0	0	0	0	7	14	17	27	22	21	12	3	1	0
F	0	0	0	0	0	0	0	0	0	0	0	0	0	0	0	0	0	0	0	0	0	0

SITE / Age-Group
Connective and soft tissue
Breast
Vulva
Vagina
Cervix uteri
Corpus uteri
Uterus part unsacified
Ovary
Placenta
Penis
Prostate

TABLE 13

THE SITES OF METASTASIS BY PERCENTAGE

SITE / Age-Group	Under 1																	95+					
	1+	5+	10+	15+	20+	25+	30+	35+	40+	45+	50+	55+	60+	65+	70+	75+	80+		85+				
Testis	T	2	0	0	0	0	0	0	0	1	0	0	0	0	0	0	0	0	0	0	0	0	
	M	2	0	0	0	0	0	0	0	1	0	0	0	0	0	0	0	0	0	0	0	0	0
Kidney, exclude renal pelvis	F	0	0	0	0	0	0	0	0	0	0	0	0	0	0	0	0	0	0	0	0	0	0
	T	28	0	2	0	0	1	1	0	0	1	5	3	3	4	3	2	1	1	0	0	0	0
Renal pelvis	M	16	0	1	0	0	0	0	0	1	3	2	2	3	2	1	0	1	0	0	0	0	0
	F	12	0	1	0	0	1	0	0	1	0	2	1	1	1	1	1	0	0	0	0	0	0
Ureter	T	8	0	0	0	0	0	0	0	1	0	0	1	0	0	4	1	0	0	0	0	0	0
	M	5	0	0	0	0	0	0	0	0	0	1	0	0	0	3	1	0	0	0	0	0	0
Bladder	F	3	0	0	0	0	0	0	0	1	0	0	0	0	0	1	0	0	0	0	0	0	0
	T	2	0	0	0	0	0	0	0	0	0	0	0	0	1	0	0	0	0	0	0	0	0
Eye and adnexa	M	2	0	0	0	0	0	0	0	0	0	0	0	0	1	0	0	0	0	0	0	0	0
	F	0	0	0	0	0	0	0	0	0	0	0	0	0	0	0	0	0	0	0	0	0	0
Meninges	T	103	0	1	0	0	0	0	0	2	0	3	7	8	9	12	16	20	15	7	1	2	0
	M	83	0	1	0	0	0	0	0	2	0	1	6	6	7	10	13	14	13	7	1	2	0
Brain	F	20	0	0	0	0	0	0	0	0	0	2	1	2	2	2	3	6	2	0	0	0	0
	T	19	0	3	0	0	0	1	1	3	2	2	0	1	1	0	2	2	2	0	0	0	0
Thyroid	M	6	0	1	0	0	0	1	1	0	1	0	0	0	0	1	0	0	1	0	0	0	0
	F	13	0	2	0	0	0	1	0	2	2	1	0	1	1	0	0	1	0	0	0	0	0
Adrenal gland	T	4	0	0	0	0	0	0	0	1	0	0	1	0	0	0	1	0	0	0	0	0	0
	M	0	0	0	0	0	0	0	0	0	0	0	0	0	0	0	0	0	0	0	0	0	0
Other endocrine gland	F	4	0	0	0	0	0	0	0	1	0	0	1	0	0	0	1	0	0	0	0	0	0
	T	47	0	3	4	2	2	3	2	4	5	4	3	4	6	2	0	0	0	0	0	0	0
Other endocrine gland	M	20	0	1	4	0	2	0	2	1	3	1	0	1	2	3	0	0	0	0	0	0	0
	F	27	0	2	0	2	0	3	1	1	4	2	2	3	2	0	0	0	0	0	0	0	0
Other endocrine gland	T	64	0	0	0	1	1	4	3	9	5	8	10	2	4	6	4	2	3	1	0	0	0
	M	15	0	0	0	1	1	0	1	0	1	0	4	0	1	1	1	1	1	1	0	0	0
Other endocrine gland	F	49	0	0	0	0	0	1	3	3	8	4	8	6	2	3	5	3	1	2	0	0	0
	T	4	0	1	0	0	0	0	0	0	1	1	0	0	0	0	0	0	0	0	0	0	0
Other endocrine gland	M	1	0	0	0	0	0	0	0	0	1	0	0	0	0	0	0	0	0	0	0	0	0
	F	3	0	1	0	0	0	0	0	0	1	1	0	0	0	0	0	0	0	0	0	0	0
Other endocrine gland	T	7	0	0	0	1	3	1	1	0	1	0	0	0	0	0	0	0	0	0	0	0	0
	M	6	0	0	0	1	3	1	1	0	0	0	0	0	0	0	0	0	0	0	0	0	0
Other endocrine gland	F	1	0	0	0	0	0	0	0	0	0	0	0	0	0	0	0	0	0	0	0	0	0

SITE / Age-Group		Under 1	1+	5+	10+	15+	20+	25+	30+	35+	40+	45+	50+	55+	60+	65+	70+	75+	80+	85+	90+	95+	Unknown	
Unspecified site		T	224	0	1	1	3	2	1	6	9	8	25	20	31	24	28	26	23	6	7	3	0	0
Hodgkin's disease		M	117	0	1	0	1	2	1	2	6	3	13	10	16	15	8	16	12	3	6	2	0	0
		F	107	0	0	1	2	0	0	4	3	5	12	10	15	9	20	10	11	3	1	1	0	0
		T	7	0	0	1	0	0	1	1	0	0	0	1	0	1	1	0	0	0	0	0	0	0
		M	3	0	0	0	0	0	1	0	0	0	1	0	0	1	0	0	1	0	0	0	0	0
		F	4	0	0	1	0	0	1	1	0	0	0	0	0	1	0	0	0	0	0	0	0	0
Malignant lymphoma		T	203	0	1	3	5	2	5	13	18	22	13	23	20	15	13	22	9	12	4	2	1	0
		M	108	0	1	3	4	2	1	7	11	14	4	12	9	6	6	16	3	6	0	0	1	0
		F	95	0	0	0	1	0	4	6	7	8	9	11	11	9	7	4	6	6	4	2	0	0
Multiple myeloma		T	43	0	0	0	0	0	1	2	2	2	2	2	2	2	2	2	2	2	2	2	2	2
		M	27	0	0	0	0	0	1	1	2	0	7	1	5	5	3	1	0	0	1	0	0	0
		F	16	0	0	0	0	0	0	1	0	2	1	2	5	3	2	0	0	0	0	0	0	0
Acute lymphoblastic leukaemia		T	89	0	21	16	12	9	10	2	6	0	5	2	1	2	0	1	0	2	0	0	0	0
		M	48	0	13	9	5	5	7	1	3	0	2	0	0	0	0	1	0	2	0	0	0	0
		F	41	0	8	7	7	4	3	1	3	0	3	2	1	2	0	0	0	0	0	0	0	0
Chronic lymphocytic leukaemia		T	20	0	0	0	0	0	1	1	0	1	1	1	1	4	3	3	2	3	0	0	0	0
		M	16	0	0	0	0	0	1	1	0	0	1	0	1	0	4	3	3	1	2	0	0	0
		F	4	0	0	0	0	0	0	0	0	0	1	0	1	0	0	0	1	1	0	0	0	0
Acute myeloid leukaemia		T	48	0	3	6	0	3	3	3	2	3	2	3	0	4	4	4	3	4	1	0	0	0
		M	19	0	1	4	0	2	1	3	0	1	0	1	0	1	2	1	1	1	0	0	0	0
		F	29	0	2	2	0	1	2	0	2	2	2	0	3	2	3	2	3	2	3	1	0	0
Chronic myeloid leukaemia		T	55	0	0	2	1	1	6	3	9	2	2	3	8	3	6	3	3	3	0	0	0	0
		M	35	0	0	0	0	1	5	2	8	0	1	2	6	0	3	2	3	2	0	0	0	0
		F	20	0	0	2	1	0	1	1	1	2	1	1	2	3	3	1	0	1	0	0	0	0
Myeloid leukaemia, unspecified		T	11	0	0	0	0	1	0	0	3	2	0	2	1	0	0	2	0	0	0	0	0	0
		M	4	0	0	0	0	0	0	0	2	0	0	0	0	0	0	2	0	0	0	0	0	0
		F	7	0	0	0	0	1	0	0	1	2	0	2	1	0	0	0	0	0	0	0	0	0
Acute monocytic leukaemia		T	4	0	0	0	0	1	0	1	0	0	0	1	0	1	0	0	0	0	0	0	0	0
		M	2	0	0	0	0	0	0	1	0	0	0	0	0	0	1	0	0	0	0	0	0	0
		F	2	0	0	0	0	1	0	0	0	0	0	1	0	0	0	0	0	0	0	0	0	0
Leukaemia of unspecified type		T	27	0	0	3	0	3	1	2	1	1	1	3	2	1	2	2	4	0	1	0	0	0
		M	12	0	0	2	0	2	0	1	1	1	1	0	1	0	0	1	2	0	0	0	0	0
		F	15	0	0	1	0	1	1	1	0	0	3	1	1	2	1	2	1	2	0	1	0	0

TABLE 1.1 (Contd.)

TABLE IX
THE COMMON SITE OF MALIGNANCY BY PERCENTAGE

Site	PERCENTAGE				
	1997	1998	1999	2000	2001
Total Cases	4014	3610	4006	3865	3981
Cervix uteri	15.60	13.93	14.10	14.23	14.07
Breast	9.79	10.38	11.15	10.97	11.83
Colo-rectum	6.08	6.43	6.44	7.66	7.56
Lung	6.63	6.32	5.14	5.48	6.66
Leukaemia	7.26	7.53	6.69	7.50	6.38
Lymphoma	5.31	3.93	5.59	5.82	5.10
Oral cavity	5.18	5.21	4.47	4.09	3.89
Liver	4.93	1.04	4.22	3.78	3.82
Prostate	1.17	1.97	2.47	2.43	3.67
Ovary	4.43	4.85	2.98	2.20	3.27

TABLE IX.I
THE COMMON SITE OF MALIGNANCY BY PERCENT 1997 - 2001

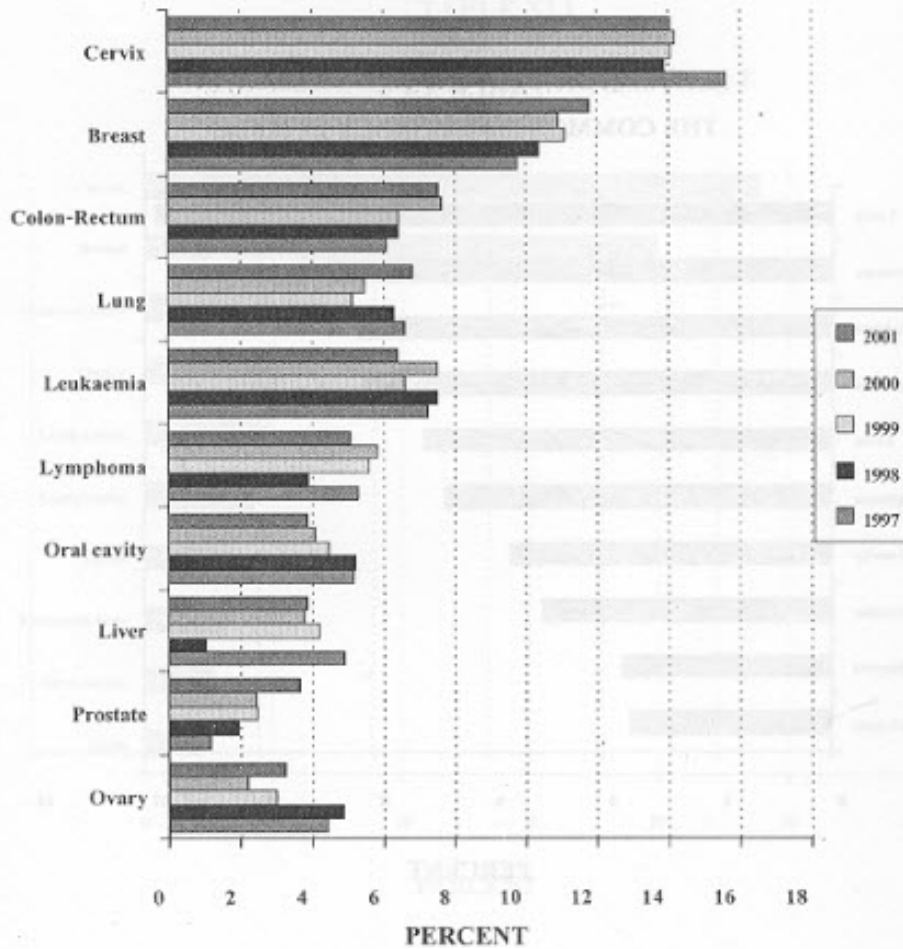


TABLE X
THE COMMON MALIGNANCY IN MALE

Site	Male	%
All site	1641	100
Lung	194	11.82
Prostate	146	8.90
Colo - Rectum	137	8.35
Leukaemia	135	8.23
Liver	117	7.13
Lymphoma	111	6.76
Oral cavity	92	5.61
Bladder	83	5.06
Nasopharynx	60	3.66
Oesophagus	50	3.05

TABLE X.I
THE COMMON MALIGNANCY IN MALE

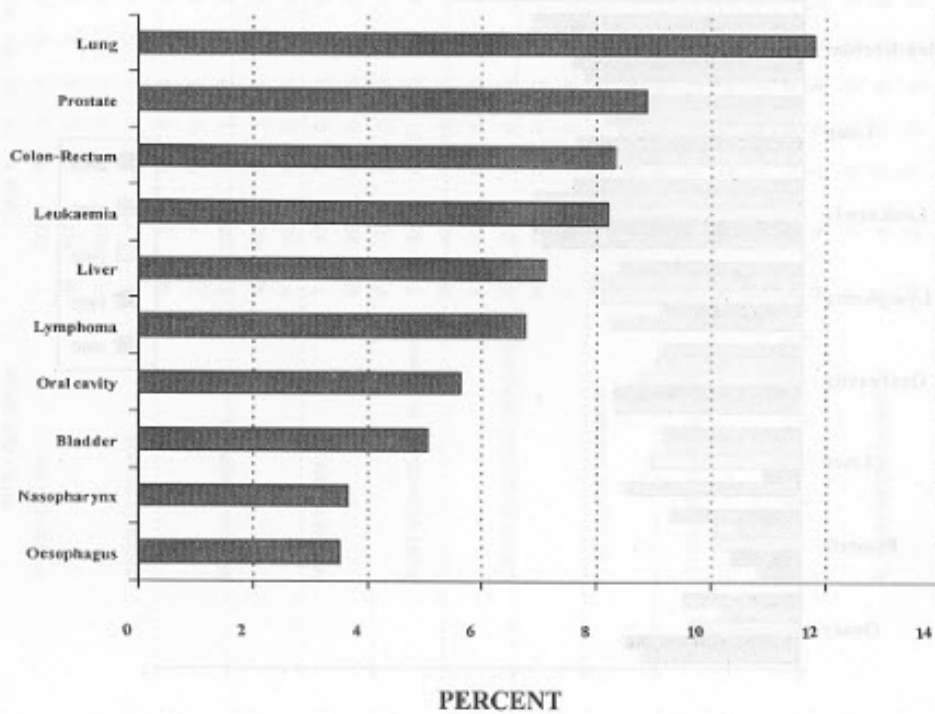


TABLE XI
THE COMMON MALIGNANCY IN FEMALE

Site	Female	%
All site	2340	100
Cervix	568	24.27
Breast	466	19.91
Colo - Rectum	164	7.01
Ovary	130	5.56
Leukaemia	114	4.87
Lymphoma	99	4.23
Lung	79	3.38
Endometrium	71	3.03
Oral cavity	63	2.69
Skin	50	2.14

TABLE XII
THE COMM MALIGNANCY IN FEMALE

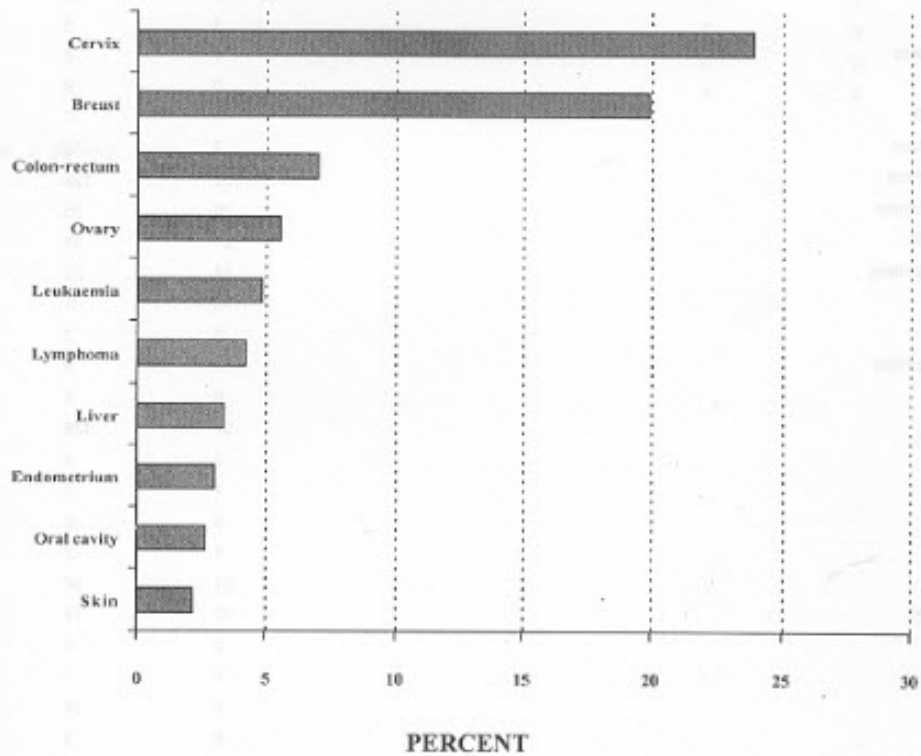


TABLE XII
NUMBER OF CASES OF MALIGNANCY BY PROVINCE

Province	Male	Female	Total
All Province	1641	2340	3981
Amnrajcharoen	2	1	3
Angtong	6	9	15
Ayuthays	24	47	71
Bangkok	660	971	1631
Buriram	15	13	28
Cha-choengsao	14	17	31
Chainat	6	15	21
Chaiyaphum	11	8	19
Chantaburi	7	16	23
Chongmai	3	3	6
Chengrai	2	7	9
Chonburi	14	28	42
Chumphon	18	17	35
Kalasin	3	4	7
Kamphaengphet	15	7	22
Kanchanaburi	37	55	92
Khonkaen	7	14	21
Krabi	3	1	4
Lampang	5	5	10
Loei	1	4	5
Lopburi	14	14	28
Lumphun	1	0	1
Mehasarakham	4	6	10
Mukdaham	0	6	6
Nakornayok	5	7	12
Nakornphanom	7	5	12
Nakornphathom	92	128	220
Nakornrajchsima	25	25	50
Nakomsawan	21	31	52
Nakornsi Thamaraj	17	23	40
Nan	3	5	8
Narathiwat	1	2	3
Nhongbualumpoo	4	3	7
Nhongkhal	6	4	10
Nonthaburi	97	128	225
Pang-Nga	2	5	7
Pathani	1	1	2
Payao	0	6	6
Phattalung	4	2	6
Phetburi	21	39	60
Phetchaboon	12	14	26
Phrae	2	7	9
Phuket	7	7	14
Pichit	9	15	24
Pisanulok	6	9	15
Prachinburi	6	5	11

Province	Male	Female	Total
Prachuebirkirichen	28	44	72
Prathumthani	21	27	48
Rajburi	67	118	185
Ranong	4	6	10
Rayong	6	11	17
Roi-Et	8	8	16
Sakonakhom	5	7	12
Samutprakran	61	75	136
Samutsakhom	49	65	114
Samutsongkram	19	24	43
Saraburi	8	22	30
Satun	3	1	4
Singburi	7	6	13
Songkhla	3	3	6
Snakaew	8	8	16
Snsaket	11	10	21
Sukhothai	6	7	13
Suphanburi	39	59	98
Surajthani	11	19	30
Surin	10	18	28
Tak	3	7	10
Trang	6	5	11
Trat	3	8	11
Ubon	5	13	18
Udonthani	6	5	11
Uthaitani	7	3	10
Utharadit	8	8	16
Yala	0	2	2
Yasothon	6	5	11

Net Records 7 Records

**TABLE XIII
OCCUPATION**

Occupation	North	N-East	Central	South	Total
Farmer	0	2	2	0	4
Fishery	0	0	6	0	6
Housewife	46	59	1175	60	1340
Mercantile	20	23	363	15	421
Official	21	30	423	26	500
Plantation	28	95	245	31	399
Priest	1	2	23	0	26
Worker	33	95	948	32	1108
Unoccupy	10	20	132	11	173
Total	159	326	3317	175	3977

Not Record Both Occupation And Province = 4

**TABLE XIV
MALIGNANT LYMPHOMA BY SITE**

Site	Total	Male	Female
All Sites	256	126	130
Palate	2	2	0
Salivary gland	4	2	2
Tonsil	8	1	7
Oropharynx	1	1	0
Nasopharynx	4	2	2
Stomach	6	1	5
Small bowel	3	3	0
Large bowel	2	1	1
Accessory sinus	4	1	3
Mediastinum	1	0	1
Breast	3	0	3
Eye and Adnexa	4	0	4
Brain	2	0	2
Thyroid	2	1	1
Lymph node	201	107	94

TEBLE XV
MALIGNANT LYMPHOMA BY AGE

Age	Total		Male		Female	
	n	%	n	%	n	%
All Age	256	100.00	128	100.00	130	100.00
Unknown	0	0.00	0	0.00	0	0.00
1+	1	0.39	1	0.79	0	0.00
5+	5	1.96	4	3.17	1	0.77
10+	5	1.96	4	3.17	1	0.77
15+	3	1.17	2	1.59	1	0.77
20+	7	2.73	1	0.79	6	4.62
25+	16	6.25	9	7.14	7	5.38
30+	19	7.42	12	9.52	7	5.38
35+	25	9.77	15	11.9	10	7.69
40+	15	5.86	3	2.36	12	9.23
45+	28	10.94	14	11.11	14	10.77
50+	28	10.16	13	10.32	13	10.00
55+	10	7.42	7	5.56	12	9.23
60+	21	8.20	7	5.56	14	10.77
65+	28	10.16	19	15.03	7	5.38
70+	17	6.64	7	5.56	10	7.69
75+	13	5.08	6	4.76	7	5.38
80+	7	2.73	1	0.79	6	4.62
85+	2	0.78	0	0.00	2	1.54
90+	1	0.39	1	0.79	0	0.00
95+	0	0.00	0	0.00	0	0.00

**TABLE XVI
CLINICAL STAGE OF CERVIX**

Stage	Female	%	Total	%
Stage not record	169	30.18	169	30.18
Stage 1	6	1.07	6	1.07
Stage 1a	11	1.96	11	1.96
Stage 1b	56	10.00	56	10.00
Stage 2	8	1.43	8	1.43
Stage 2a	22	3.93	22	3.93
Stage 2b	111	19.82	111	19.82
Stage 3	9	1.61	9	1.61
Stage 3a	2	0.36	2	0.36
Stage 3b	150	26.79	150	26.79
Stage 4	10	1.79	10	1.79
Stage 4a	2	0.36	2	0.36
Stage 4b	4	0.71	4	0.71
Total	560	100.00	560	100.00

**TABLE XVII
CLINICAL STAGE OF OVARY**

Stage	Female	%	Total	%
Stage not record	71	54.62	71	54.62
Stage 1	3	2.31	3	2.31
Stage 1a	5	3.85	5	3.85
Stage 1b	2	1.54	2	1.54
Stage 1c	11	8.46	11	8.46
Stage 2	1	0.77	1	0.77
Stage 2a	2	1.54	2	1.54
Stage 2c	6	4.62	6	4.62
Stage 3	5	3.85	5	3.85
Stage 3a	1	0.77	1	0.77
Stage 3b	5	3.85	5	3.85
Stage 3c	10	7.69	10	7.69
Stage 4	7	5.38	7	5.38
Stage 4b	1	0.77	1	0.77
Total	130	100.00	130	100.00

**TABLE XVIII
TREATMENT OF CA CERVIX**

Stage	Female	%	Total	%
Surgery	35	6.25	35	6.25
Surgery + radiation	18	3.21	18	3.21
Surgery + chemotherapy	3	0.54	3	0.54
Radiation	297	53.04	297	53.04
Radiation + chemotherapy	13	2.32	13	2.32
Chemotherapy	9	1.61	9	1.61
Not record	185	33.04	185	33.04
Total	560	100.00	560	100.00

TABLE XIX
TREATMENT OF CA OVARY

Stage	Female	%	Total	%
Surgery	3	2.31	3	2.31
Surgery + chemotherapy	4	3.08	4	3.08
Radiation	7	5.38	7	5.38
Radiation + chemotherapy	1	0.77	1	0.77
Chemotherapy	36	27.69	36	27.69
Not record	79	60.77	79	60.77
Total	130	100.00	130	100.00

TABLE XX
TREATMENT OF CA BREAST

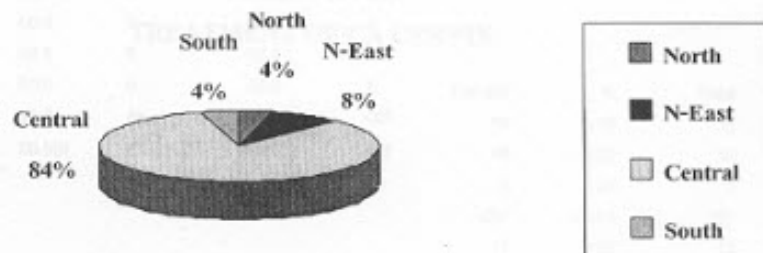
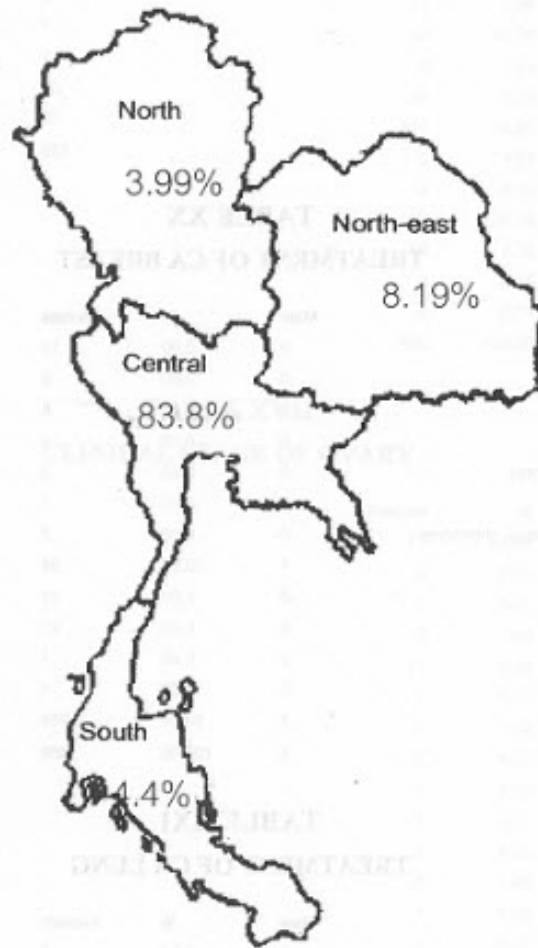
Stage	Male	%	Female	%	Total	%
Surgery	0	0.00	10	2.15	10	2.12
Surgery + radiation	0	0.00	6	1.29	6	1.27
Surgery + chemotherapy	0	0.00	8	1.72	8	1.70
Surgery + hormone	0	0.00	2	0.43	2	0.42
Surgery + radiation + chemotherapy	0	0.00	3	0.64	3	0.64
Surgery + radiation + hormone	0	0.00	1	0.21	1	0.21
Surgery + radiation + chemotherapy +hormone	0	0.00	3	0.64	3	0.64
Radiation	1	20.00	98	21.03	99	21.02
Radiation + chemotherapy	0	0.00	24	5.15	24	5.10
Chemotherapy	0	0.00	41	8.80	41	8.70
Chemotherapy + hormone	0	0.00	1	0.21	1	0.21
Hormone	0	0.00	1	0.21	1	0.21
Not record	4	80.00	268	57.51	272	57.75
Total	5	100.00	466	100.00	471	100.00

TABLE XXI
TREATMENT OF CA LUNG

Stage	Male	%	Female	%	Total	%
Surgery + chemotherapy	1	0.52	0	0.00	1	0.37
Radiation	64	33.16	19	24.05	83	30.51
Radiation + Chemotherapy	20	10.36	6	7.59	26	9.56
Chemotherapy	5	2.59	9	11.39	14	5.15
Chemotherapy + hormone	1	0.52	0	0.00	1	0.37
Hormone	1	0.52	0	0.00	1	0.37
Other	1	0.52	0	0.00	1	0.37
Not recorded	100	51.81	45	56.96	145	53.31
Total	193	100.00	79	100.00	272	100.00

CANCER BY REGION

2001



THE COMMITTEE OF TUMOUR REGISTRY

KRIS BHOTHISUWAN	M.D.	CHAIRMAN
SUPATRA SANGRUCHI	M.D.	VICE CHAIRMAN
CHAIYOD THIRAPAKAWONG	M.D.	
WILAIORN BHOTHISUWAN	M.D.	
CHOAKCHAI METHEETRAIRUT	M.D.	
CHEERASOOK CHONGKOLWATANA	M.D.	
PAWANA PUSUWAN	M.D.	
MONGKOL BENJAPIBAL	M.D.	
GAVIVAN VEERAKUL	M.D.	
WIROON BOONNUCH	M.D.	
CHAILERD PICHITPORNCHAI	M.D., Ph.D.	
VICHEN SRIMUNINNIMIT	M.D.	
CHAIYONG NUALYONG	M.D.	
APICHAT ASAVAMONGKOLKUL	M.D.	
CHIRAYU AUEWARAKUL	M.D., Ph.D.	
KANCHANA AMORNPICHATKUL	M.D.	
ADUNE RATANAWICHITRASIN	M.D.	
SURACHART CHAKRAPEE-SIRISUK	M.D.	
YONGYUT SIRIVATANAUKSORN	M.D., Ph.D.	
VORAPAN SIRIVATANAUKSORN	M.D., Ph.D.	
MARISA SOMBUTBOON	R.N.	
PITTAYAPOOM PATTARANUTOPORN	M.D.	SECRETARY

THE SUBCOMMITTEE OF TUMOUR REGISTRY

KRIS BHOTHISUWAN	
SUPATRA SANGRUCHI	
CHOAKCHAI METHEETRAIRUT	
VUTISIRI VEERASAN	
CHAIYOD THIRAPAKAWONG	
GAVIVAN VEERAKUL	
KANCHANA AMORNPICHATKUL	
ADUNE RATANAWICHITRASIN	
PITTAYAPOOM PATTARANUTOPORN	
VISOOT VOOTIPRUX	CONSULTANT

OFFICE STAFF

KULWANTIP NEOVAKUL	
PIROMRAT KLANKEAW	
FRANEE MAHAMADSORLAE	
NIYOM CHUMROJ	
ORAWAN HIRANYAKUPT	
MATTANA MOUANGNGAM	
UMAPORN EAUGUL-ATICHAT	