

TUMOUR REGISTRY
SIRIRAJ CANCER CENTER



STATISTICAL REPORT
2005

FACULTY OF MEDICINE SIRIRAJ HOSPITAL
MAHIDOL UNIVERSITY

ISSN 00857-3840

TUMOUR REGISTRY

SIRIRAJ CANCER CENTER



STATISTICAL REPORT

2005

FACULTY OF MEDICINE SIRIRAJ HOSPITAL

MAHIDOL UNIVERSITY

ISSN 00857-3840

THE SIRIRAJ CANCER CENTER

Tumour registry 2005

Annual report 2005

Editor

Supatra Sangruchi

Circulation

Kulwantip Neovakul

Publish by

Siriraj Cancer Center

Siriraj Hospital

2 Pran-nok Road

Bangkok 10700

THAILAND

Tel: 66 0 2412 1360

Fax: 66 0 2412 9169

Table of contents

Number of patients	1
Diagnosis	1
Malignancy by age and sex	1
Primary site	3
Pathology according to site	7
The ten leading sites	17
Malignant neoplasm in childhood	18
Primary sites as to age and sex	19
Common site of malignancy	26
Common site in male	27
Common site in female	28
Malignancy by province	29
Malignancy by occupation	31
Malignant lymphoma by site	31
Malignant lymphoma by age	32
Clinical stage of carcinoma of cervix	33
Clinical stage of carcinoma of ovary	34
Clinical stage of carcinoma of breast	35
Cancer by region	36

THE COMMITTEE OF TUMOUR REGISTRY

SUPATRA SANGRUCHI	M.D.	CHAIRMAN
CHAIYOD THIRAPAKAWONG	M.D.	VICE CHAIRMAN
WILAIORN BHOTHISUWAN	M.D.	VICE CHAIRMAN
SURAPOL ISSARAGRISIL	M.D.	
PITTAYAPOOM PATTARANUTAPORN	M.D.	
SUTHISAK SUTHIPONGCHAI	M.D.	
VACHARIN RATANAMART	M.D.	
PARVINEE SUWANAGOOOL	M.D.	
DHAIVADEE DULAYAJINDA	M.D.	
CHOAKCHAI METHEETRAIRUT	M.D.	
CHEERASOOK CHONGKOLWATANA	M.D.	
APICHAT ASAVAMONGKOLKUL	M.D.	
ADUNE RATANAWICHITRASIN	M.D.	
SUNAI LEEWANSANGTONG	M.D.	
SUCHAI SOONTRAPA	M.D.	
SUPAKORN ROJANANIN	M.D.	
TEERAWIT PHANCHAIPETCH	M.D.	
PORNCHAI O-CHAREONRAT	M.D.	
SORANIT SILTHARM	M.D.	
SATHAPORN MANATSATHIS	M.D.	
CHIRAYU AUEWARAKUL	M.D., Ph.D.	
MONGKOL LAOHAPANSANG	M.D.	
PUAN SUTHIPINITHARM	M.D.	
KANCHANA AMORNPICHETKUL	M.D.	
GAVIVAN VEERAKUL	M.D.	
VICHIEEN SRIMUNINNIMIT	M.D.	
WIROON BOONNUCH	M.D.	
MONGKOL BENJAPIBAL	M.D.	
NOPPHOL PAUSAWASDI	Ph.D.	
SOMSRI RATANAWICHITRASIN	M.D.	
NANTHASAK TISAVIPAT	M.D.	
YONGYUT SIRIVATANAUKSORN	M.D. Ph.D.	
JONGJIT KANAGUL	R.N.	
KULWANTIP NEOVAKUL		SECRETARY

THE SUBCOMMITTEE OF TUMOUR REGISTRY

SUPATRA SANGRUCHI	SORANIT SILTHARM
WILAIORN BHOTHISUWAN	SANAN VISUTHISAKCHAI
CHAIYOD THIRAPAKAWONG	VICHIEEN SRIMUNINNIMIT
PITTAYAPOOM PATTARANUTOPORN	KANCHANA AMORNPICHETKUL
DHAIVADEE DULAYAJINDA	GAVIVAN VEERAKUL
PARVINEE SUWANAGOOOL	PORNCHAI O-CHAREONRAT
SATHAPORN MANATSATHIS	SOMSRI RATANAWICHITRASIN
VUTISIRI VEERASAN	VISOOT VOOTIPRUX

OFFICE STAFF

KULWANTIP NEOVAKUL	THANIT HIRANYAKUPT
PIROMRAT KLANKEAW	MATTANA MOUANGNGAM
PRANEE MAHAMADSORLAE	UMAPORN EAUGUL-ATICHAT
NIYOM CHUMROJ	KANDA PUTTAINSORN

Introduction

The cancer statistics for 2005 show a modest increase in cancer incidence compared with the previous year. The increasing in number of older people and early detection are among several factors that explain the increase.

Recently we have been allowed entry into the patient data from Out Patient and the laboratory report from Pathological Department. Thanks to this, the Cancer Center Registry has able to make up an optimal main database regarding completeness and quality.

We thanks to all different departments for their extra efforts in notifying cancer data to the Cancer Registry as these efforts are necessary in reaching the completeness and good quality of data.



Supatra Sangruji

Chairman

Siriraj Cancer Center

2005

TABLE I

NUMBER OF PATIENT

Type of patient	No.of Cases
Total No. of Out Patients	2,221,411
Total No. of New Patients	563,232
Total No. of New Patients with Malignancy	5,720

The Cancer case are 1.02% of all new patients

TABLE II

DIAGNOSIS

Diagnosed by	Number	Percentage
Histological proved	5,273	92.19
Clinical & X-ray	447	7.81
Total	5,720	100.00

TABLE III

NUMBER OF MALIGNANT NEOPLASM BY AGE AND SEX

AGE-group	No. of Cases					
	MALE		FEMALE		TOTAL	
	No	%	No	%	No	%
ALL AGE	2,606	100.00	3,114	100.00	5,720	100.00
NOT RECORD	7	0.27	4	0.13	11	0.19
1+	29	1.11	25	0.80	54	0.94
5+	21	0.81	19	0.61	40	0.70
10+	38	1.46	21	0.67	59	1.03
15+	42	1.61	27	0.87	69	1.21
20+	30	1.15	40	1.28	70	1.22
25+	36	1.38	87	2.79	123	2.15
30+	61	2.34	124	3.98	185	3.23
35+	95	3.65	198	6.36	293	5.12
40+	139	5.33	327	10.50	466	8.15
45+	200	7.67	376	12.07	576	10.07
50+	255	9.79	425	13.65	680	11.89
55+	259	9.94	339	10.89	598	10.45
60+	330	12.66	292	9.38	622	10.87
65+	373	14.31	276	8.86	649	11.35
70+	333	12.78	215	6.90	548	9.58
75+	211	8.10	177	5.68	388	6.78
80+	97	3.72	93	2.99	190	3.32
85+	41	1.57	41	1.32	82	1.43
90+	9	0.35	5	0.16	14	0.24
95+	0	-	3	0.10	3	0.05

TABLE III.I

NUMBER OF MALIGNANT NEOPLASM BY AGE

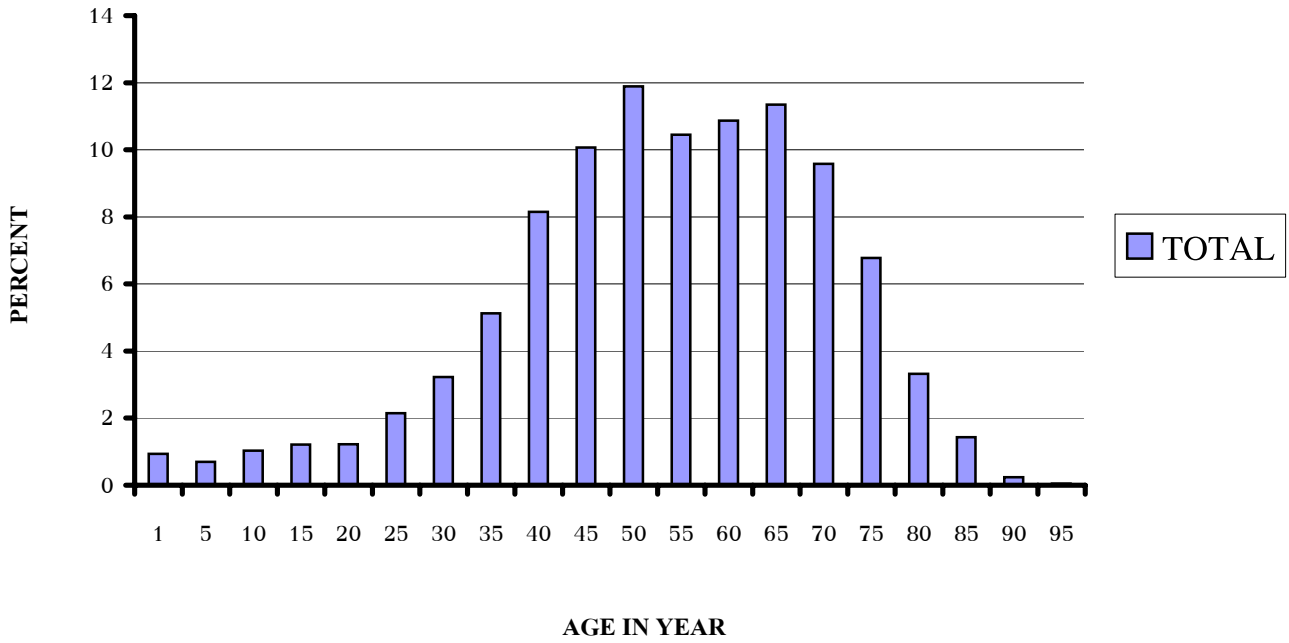


TABLE III.II

NUMBER OF MALIGNANT NEOPLASM BY AGE

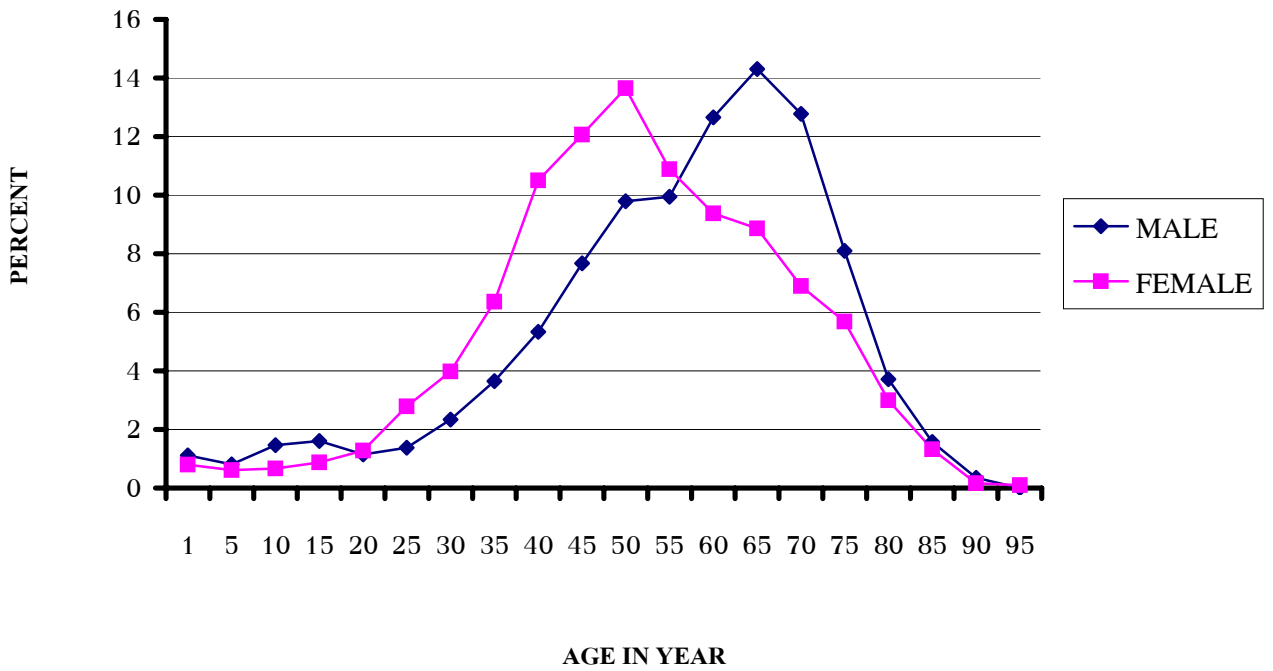


TABLE IV
PRIMARY SITE

CODE	SITE	No.of Cases			%
		M	F	T	
	GRAND TOTAL	2,606	3,114	5,720	100
C00.0-C14.0	Malig.Neoplasm of Lip, Oral Cavity & Pharynx	267	122	389	6.80
C00.0	Upper lip	0	1	1	0.02
C00.1	Lower lip	1	11	12	0.21
C01	Base of tongue	22	4	26	0.45
C02.3	Ant Two-Third of Tongue, part unspicified	0	1	1	0.02
C02.9	Tongue, unspecified	33	21	54	0.94
C03.0	Gum upper	1	1	2	0.03
C03.1	Gum lower	1	2	3	0.05
C03.9	Gum,unspecified	4	2	6	0.10
C04.9	Floor of mouth, unspecified	19	5	24	0.42
C05.0	Hard palate	11	6	17	0.30
C05.1	Soft palate	7	3	10	0.17
C06.0	Cheek mucosa	6	11	17	0.30
C06.2	Retromolar area	0	1	1	0.02
C06.9	Mouth, unspecified	1	0	1	0.02
C07	Parotid gland	14	6	20	0.35
C08.9	Salivary gland, unspecified	3	1	4	0.07
C09.0	Tonsillar Fossa	0	1	1	0.02
C09.9	Tonsil, unspecified	10	5	15	0.26
C10.9	Oropharynx, unspecified	6	1	7	0.12
C11.9	Nasopharynx, unspecified	95	33	128	2.24
C12	Pyriiform sinus	17	4	21	0.37
C13.1	Arypiglotis outer surface	1	0	1	0.02
C13.9	Hypopharynx, nuspecified	9	1	10	0.17
C14.0	Pharynx, unspecified	5	0	5	0.09
C14.8	Oralcavity, unxpecified	1	1	2	0.03
C15-C26	Malig, Neoplasm of Digestive Organs	737	474	1211	21.17
C15.1	Esophagus Lower 1/3	0	2	2	0.03
C15.9	Esophagus, Unspecified	58	11	69	1.21
C16.0	Stomach Cardia	3	0	3	0.05
C16.3	Stomach Antrum	0	1	1	0.02
C16.9	Stomach, unspecified	51	55	106	1.85
C17.0	Duodenum	3	6	9	0.16
C17.1	Jejunum	0	3	3	0.05
C17.2	Ileum	1	1	2	0.03
C17.3	Meckel Diverticulum	0	1	1	0.02
C17.9	Small Intestine	0	1	1	0.02
C18.0	Caecum	14	12	26	0.45
C18.1	Appendix	1	1	2	0.03
C18.2	Colon Ascending	2	3	5	0.09
C18.4	Colon Transvers	5	4	9	0.16
C18.6	Colon Descending	7	1	8	0.14

CODE	SITE	No.of Cases			%
		M	F	T	
	GRAND TOTAL	2,606	3,114	5,720	100
C18.7	Sigmoid colon	42	44	86	1.50
C18.9	Colon unspecified	74	65	139	2.43
C19	Rectosigmoid	14	7	21	0.37
C20	Rectum	84	67	151	2.64
C21.0	Anal unspecified	2	0	2	0.03
C21.1	Anal canal	2	5	7	0.12
C22.0	Liver cell ca	232	77	309	5.40
C22.1	Cholangio carcinoma	69	34	103	1.80
C22.2	Hepatoblastoma	5	4	9	0.16
C22.9	Liver unspecified	18	15	33	0.58
C23	Gall bladder	6	12	18	0.31
C24.0	Bile duct	1	3	4	0.07
C24.1	Ampular	7	10	17	0.30
C24.9	Bile duct	1	0	1	0.02
C25.0	Pancreas head	14	14	28	0.49
C25.2	Pancreas tail	1	1	2	0.03
C25.4	Pancreas endocr	1	1	2	0.03
C25.9	Pancreas unspceified	19	13	32	0.56
C30-C39	Malig. Neoplasm of Respiratory & Intrathoracic Organ	393	171	564	9.86
C30.0	Nasal cavity	14	8	22	0.38
C30.1	Middle Ear	1	0	1	0.02
C31.0	Maxillary sinus	11	5	16	0.28
C32.0	Glottis	37	1	38	0.66
C32.1	Supraglottis	14	3	17	0.30
C32.2	Subglottis	1	0	1	0.02
C32.8	Larynx overlap	7	0	7	0.12
C32.9	Larynx, unspecified	20	2	22	0.38
C33	Trachea	1	2	3	0.05
C34.1	Lung upper lobe	36	19	55	0.96
C34.2	Lung middle lobe	1	1	2	0.03
C34.3	Lung lower lobe	6	9	15	0.26
C34.9	Lung, unspecified	234	115	349	6.10
C37	Thymus	7	6	13	0.23
C38.1	Anterior mediastinum	3	0	3	0.05
C40-C50	Malig. Neoplasm of Bone, Cartilage, Skin, Soft Tissue, Breast	154	897	1,051	18.37
C40.2	Long bone, lower limb	10	6	16	0.28
C40.9	Bone, unspecified	18	17	35	0.61
C41.1	Mandible	1	0	1	0.02
C41.4	Pelvic, sacrum, coxix bone	0	2	2	0.03
C43.0	Melanoma Lip	1	0	1	0.02
C43.3	Melanoma Face	2	0	2	0.03
C43.7	Melanoma Lower Limb	3	6	9	0.16
C43.9	Melanoma skin, unspecified	7	5	12	0.21
C44.0	Skin, lip	0	3	3	0.05
C44.1	Skin, eyelid	4	5	9	0.16
C44.2	Skin,external ear	5	4	9	0.16

CODE	SITE	No.of Cases			%
		M	F	T	
	GRAND TOTAL	2,606	3,114	5,720	100
C44.3	Skin, face	24	26	50	0.87
C44.4	Skin, scalp	1	1	2	0.03
C44.6	Skin, upper limb	0	1	1	0.02
C44.7	Skin, lower limb	3	4	7	0.12
C44.9	Skin, unspecified	33	22	55	0.96
C46.0	Kaposi Sarcoma Skin	1	0	1	0.02
C47.9	Peripheral nerves and autonomic nervous system, unspecified	5	4	9	0.16
C48.0	Retroperitoneum	1	1	2	0.03
C49.9	Soft tissue, unspecified	20	23	43	0.75
C50.9	Breast, unspecified	15	767	782	13.67
C51-C68	Malig. Neoplasm of Genital and Urinary Tract	465	784	1,249	21.84
C51.0	Labium Majus	0	1	1	0.02
C51.9	Vulva, unspecified	0	4	4	0.07
C52	vagina	0	19	19	0.33
C53.0	Endocervix	0	4	4	0.07
C53.1	Exocervix	0	2	2	0.03
C53.9	Cervix, unspecified	0	473	473	8.27
C54.1	Endometrium	0	114	114	1.99
C54.9	Corpus, unspecified	0	3	3	0.05
C56	Ovary	0	112	112	1.96
C57.0	Follopain tube	0	1	1	0.02
C58	Placenta	0	4	4	0.07
C60.9	Penis, unspecified	18	0	18	0.31
C61	Prostate	286	0	286	5.00
C62.9	Testis, unspecified	7	0	7	0.12
C64	Kidney	26	8	34	0.59
C65	Reanl pelvis	10	7	17	0.30
C67.9	Bladder, unspecified	117	32	149	2.60
C68.0	Urethra	1	0	1	0.02
C69-C75	Malig. Neoplasm of Eye, Brain, Spinal Card, and Endocrine Gland	112	201	313	5.47
C69.0	Conjunctiva	10	2	12	0.21
C69.2	Retina	5	5	10	0.17
C69.4	Cilliary Body	3	0	3	0.05
C69.5	Lacrimal Gland	0	3	3	0.05
C69.6	Orbit	2	1	3	0.05
C69.9	Eye, unspecified	1	0	1	0.02
C70.0	Cerebral Mening	2	1	3	0.05
C70.9	Meniges unspecified	2	6	8	0.14
C71.1	Frontal Lobe	1	0	1	0.02
C71.2	Temporla Lobe	1	0	1	0.02
C71.3	Parietal Lobe	2	1	3	0.05
C71.4	Occipital Lobe	0	1	1	0.02
C71.6	Cerebellum	5	2	7	0.12
C71.7	Brain stem	0	1	1	0.02
C71.9	Brain, unspecified	32	16	48	0.84
C73	Thyroid Gland	35	155	190	3.32

CODE	SITE	No.of Cases			%
		M	F	T	
	GRAND TOTAL	2,606	3,114	5,720	100
C74.1	Adrenal Medulla	1	0	1	0.02
C74.9	Adrenal unspecified	4	1	5	0.09
C75.1	Pituitary	5	6	11	0.19
C75.3	Pineal Gland	1	0	1	0.02
C76-C80	Malig. Neoplasm of ill - Defined , Defined,Secondang and unspecified site	149	126	275	4.81
C77.0	Lymph node of Head and Neck	3	4	7	0.12
C77.9	Lymph node unspecified site	30	26	56	0.98
C80	Unknown primary site	116	96	212	3.71
C81-C96	Malig. Neoplasm of Lymphoid, Haematologic and Related Tissue	329	339	668	11.68
C81.7	Other Hodgkins disease	1	1	2	0.03
C81.9	Hodgkin's disease	7	14	21	0.37
C82.1	Mixed Small cleaved and large	2	2	4	0.07
C82.9	Follic Lymphoma unspecified	0	2	2	0.03
C83.0	Non-Hodgkin's Lymphoma Small cell Diffuse	0	1	1	0.02
C83.2	Lymphoma diffuse mixed	1	1	2	0.03
C83.3	Non-Hodgkin's Lymphoma Large cell Diffuse	4	3	7	0.12
C83.5	Lymphoblastic diffuse	1	1	2	0.03
C83.7	Burkitt's tumour	3	0	3	0.05
C83.9	Diffuse Non-Hodgkin's Lymphoma unspecified	2	0	2	0.03
C84.0	Mycosis Fungoides	2	0	2	0.03
C84.1	Sezary's disease	0	1	1	0.02
C84.3	Lymphoepitheloid lymphoma	0	1	1	0.02
C84.4	Peripheral T-cell lymphoma	2	3	5	0.09
C85.1	B-Cell Lymphoma, unspecified	0	1	1	0.02
C85.9	NHL unspecified types	134	137	271	4.74
C88.9	Malig immunoproliferative disease	1	2	3	0.05
C90.0	Multiple myeloma	17	26	43	0.75
C90.2	Plasmacytoma	1	0	1	0.02
C91.0	Acute lymphoblastic leukaemia	49	40	89	1.56
C91.1	Chronic lymphocytic leukaemia	14	12	26	0.45
C91.5	Adult T-cell leukaemia	0	1	1	0.02
C91.9	Lymphoid leukaemia unspecified	0	2	2	0.03
C92.0	Acute myeloid leukaemia	32	28	60	1.05
C92.1	Chronic myeloid leukaemia	23	26	49	0.86
C92.4	Acute promyelocytic leukaemia	6	7	13	0.23
C92.5	Acute myelomonocytic leukaemia	2	4	6	0.10
C92.9	monocytic leukaemia	1	1	2	0.03
C93.0	Acute monocytic leukaemia	5	1	6	0.10
C94.5	Acute myelofibrosis	4	1	5	0.09
C95.9	Leukaemia, unspecified	11	18	29	0.51
C96.1	Malignant Hisitiocytosis	3	2	5	0.09
C96.2	Malignant mast cell tumour	1	0	1	0.02

TABLE V
PATHOLOGY ACCORDING TO SITE

CODE	SITE	No. of Cases		TOTAL
		MALE	FEMALE	
	GRAND TOTAL	2606	3114	5720
C00	MALIGNANT NEOPLASM OF LIP	1	12	13
	8051/3 VERRUCOUS CARCINOMA	0	3	3
	8070/3 SQUAMOUS CELL CARCINOMA	1	9	10
C01-C02	MALIGNANT NEOPLASM OF TONGUE	55	26	81
	8000/3 NEOPLASM, MALIGNANT, NOS	1	1	2
	8070/3 SQUAMOUS CELL CARCINOMA	52	23	75
	8246/3 NEUROENDOCRINE CARCINOMA	0	1	1
	8430/3 MUCOEPIDERMOID CARCINOMA	1	1	2
	9590/3 MALIGNANT LYMPHOMA	1	0	1
C03-C06	MALIGNANT NEOPLASM OF GUM, FLOOR OF MOUTH, PALATE AND OTHER UNSPECIFIED PART OF MOUTH	50	31	81
	8000/3 NEOPLASM, MALIGNANT, NOS	5	0	5
	8020/3 CARCINOMA, UNDIFFERENTIATED	1	0	1
	8070/3 SQUAMOUS CELL CARCINOMA	37	25	62
	8140/3 ADENOCARCINOMA	2	1	3
	8200/3 ADENOID CYSTIC CARCINOMA	1	0	1
	8430/3 MUCOEPIDERMOID CARCINOMA	0	3	3
	8720/3 MALIGNANT MELANOMA	3	0	3
	8900/3 RHABDOMYOSARCOMA	0	1	1
	9590/3 MALIGNANT LYMPHOMA	1	1	2
C07-C08	MALIGNANT NEOPLASM PAROTID AND OTHER MAJOR SALIVARY GLAND	17	7	24
	8000/3 NEOPLASM, MALIGNANT, NOS	2	0	2
	8070/3 SQUAMOUS CELL CARCINOMA	2	2	4
	8140/3 ADENOCARCINOMA	2	0	2
	8200/3 ADENOID CYSTIC CARCINOMA	3	3	6
	8260/3 PAPILLARY ADENOCARCINOMA	1	0	1
	8290/3 OXYPHILIC ADENOCARCINOMA	1	0	1
	8430/3 MUCOEPIDERMOID CARCINOMA	5	2	7
	8500/3 INFILTRATING CARCINOMA	1	0	1
C09	MALIGNANT NEOPLASM OF TONSIL	10	6	16
	8000/3 NEOPLASM, MALIGNANT, NOS	1	1	2
	8020/3 CARCINOMA, UNDIFFERENTIATE	1	0	1
	8070/3 SQUAMOUS CELL CARCINOMA	7	2	9
	8430/2 MUCOEPIDERMOID CARCINOMA	0	1	1
	9690/3 HODGKIN'S DISEASE	1	0	1
	9680/3 MALIGNANT LYMPHOMA, LARGE B-CELL, DIFFUSE, NOS	0	2	2
C10	MALIGNANT NEOPLASM OF OROPHARYNX	6	1	7
	8020/3 CARCINOMA, UNDIFFERENTIATED	2	0	2
	8070/3 SQUAMOUS CELL CARCINOMA	4	0	4
	9670/3 MALIG LYMPHO, SMALL LYMPHOCYTIC	0	1	1
C11	MALIGNANT NEOPLASM OF NASOPHARYNX	95	33	128
	8000/3 NEOPLASM, MALIGNANT, NOS	13	5	18
	8020/3 CARCINOMA, UNDIFFERENTIATED	36	10	46
	8070/3 SQUAMOUS CELL CARCINOMA	44	17	61
	9590/3 MALIGNANT LYMPHOMA	2	1	3

CODE	SITE	No. of Cases		
		MALE	FEMALE	TOTAL
	GRAND TOTAL	2606	3114	5720
C12	MALIGNANT NEOPLASM OF PYRIFORM SINUS	17	4	21
	8000/3 NEOPLASM, MALIGNANT	4	0	4
	8070/3 SQUAMOUS CELL CARCINOMA	13	4	17
C13	MALIGNANT NEOPLASM OF HYPOPHARYNX	10	1	11
	8070/3 SQUAMOUS CELL CARCINOMA	10	1	11
C14	MALIGNANT NEOPLASM OF OTHER AND ILL-DEFINED SITE IN THE LIP, ORAL CAVITY AND PHARYNX	6	1	7
	8020/3 CARCINOMA, UNDIFFERENTIATED	1	0	1
	8070/3 SQUAMOUS CELL CARCINOMA	4	1	5
	9675/3 MALIGNANT MIXED SMALL AND LARGE CELL	1	0	1
C15	MALIGNANT NEOPLASM OF OESOPHAGUS	58	13	71
	8000/3 NEOPLASM, MALIGNANT, NOS	11	2	13
	8020/3 CARCINOMA, UNDIFFERENTIATED	1	1	2
	8070/3 SQUAMOUS CELL CARCINOMA	42	9	51
	8140/3 ADENOCARCINOMA	4	1	5
C16	MALIGNANT NEOPLASM OF STOMACH	54	56	110
	8000/3 NEOPLASM, MALIGNANT, NOS	4	2	6
	8140/3 ADENOCARCINOMA	44	44	88
	8490/3 SIGNET RING CELL CARCINOMA	1	4	5
	8560/3 ADENOSQUAMOUS CARCINOMA	1	0	1
	8936/3 GASTROINTESTINAL STROMAL	0	3	3
	9590/3 MALIGNANT LYMPHOMA	3	1	4
	9670/3 MALIGNANT LYMPHOMA, SMALL LYMPHOCYTIC	1	0	1
	9675/3 MALIGNANT LYMPHOMA, MIXED SMALL AND LARGE CELL, DIFFUSE	0	1	1
	9680/3 MALIGNANT LYMPHOMA, LARGE B-CELL, DIFFUSE, NOS	0	1	1
C17	MALIGNANT NEOPLASM SMALL INTESTINE	4	12	16
	8140/3 ADENOCARCINOMA	3	8	11
	8240/3 CARCINOID TUMOUR	0	1	1
	8935/3 STROMAL SARCOMA NOS	0	1	1
	8936/3 GASTROINTESTINAL STOMAL	0	1	1
	9590/3 MALIGNANT LYMPHOMA	1	1	2
C18	MALIGNANT NEOPLASM OF COLON	145	130	275
	8000/3 NEOPLASM, MALIGNANT, NOS	9	10	19
	8140/3 ADENOCARCINOMA	130	119	249
	8480/3 MUCINOUS ADENOCARCINOMA	5	0	5
	8935/3 STROMAL, SARCOMA, NOS	0	1	1
	9590/3 MALIGNANT LYMPHOMA	1	0	1
C19	MALIGNANT NEOPLASM OF RETOSIGMOID	14	7	21
	8000/3 NEOPLASM, MALIGNANT, NOS	1	1	2
	8140/3 ADENOCARCINOMA	13	5	18
	8980/3 CARCINOSARCOMA	0	1	1
C20	MALIGNANT NEOPLASM OF RECTUM	84	67	151
	8000/3 NEOPLASM, MALIGNANT, NOS	6	11	17
	8070/3 SQUAMOUS CELL CA	1	1	2
	8140/3 ADENOCARCINOMA	73	54	127
	8260/3 PAPILLARY ADENOCARCINOMA	1	1	2
	8480/3 MUCINOUS ADENOCARCINOMA	2	0	2
	8936/3 GASTROINTESTINAL STROMAL SARCOMA	1	0	1

CODE	SITE	No. of Cases		
		MALE	FEMALE	TOTAL
	GRAND TOTAL	2606	3114	5720
C21	MALIGNANT NEOPLASM OF ANUS AND ANAL	4	5	9
	8070/3 SQUAMOUS CELL CARCINOMA	1	2	3
	8140/3 ADENOCARCINOMA	2	3	5
	8542/3 PAGET'S DISEASE, EXTRA MAMMARY	1	0	1
C22	MALIGNANT NEOPLASM OF LIVER AND INTRAHEPATIC BILE DUCTS	324	130	454
	8000/3 NEOPLASM, MALIGNANT, NOS	5	2	7
	8020/3 CARCINOMA, UNDIFFERENTIATE	0	1	1
	8140/3 ADENOCARCINOMA	13	11	24
	8160/3 CHOLANGIOCARCINOMA	69	34	103
	8170/3 HEPATOCELLULAR CARCINOMA	232	78	310
	8970/3 HEPATOBLASTOMA	5	4	9
C23	MALIGNANT NEOPLASM OF GALL BLADDER	6	12	18
	8000/3 NEOPLASM, MALIGNANT, NOS	0	2	2
	8140/3 ADENOCARCINOMA	4	8	12
	8160/3 CHOLANGIOCARCINOMA	1	1	2
	8260/3 PAPILLARY ADENOCARCINOMA	1	1	2
C24	MALIGNANT NEOPLASM OF OTHER AND UNSPECIFIED PARTS OF BILIARY TRACT	9	13	22
	8000/3 NEOPLASM, MALIGNANT, NOS	2	6	8
	8020/3 CARCINOMA, UNDIFFERENTIATED	1	0	1
	8140/3 ADENOCARCINOMA	6	6	12
	8260/3 PAPILLARY ADENOCARCINOMA	0	1	1
C25	MALIGNANT NEOPLASM OF PANCREAS	35	29	64
	8000/3 NEOPLASM, MALIGNANT, NOS	18	21	39
	8140/3 ADENOCARCINOMA	10	5	15
	8154/3 MIXED ISLET AND EXOCRINE ADENO	1	2	3
	8246/3 NEUROENDOCRINE CARCINOMA	1	1	2
	8440/3 CYSTADENOCARCINOMA	1	0	1
	8470/3 MUCINOUS CYSTADENOCARCINOMA	1	0	1
	8480/3 MUCINOUS ADENOCARCINOMA	3	0	3
C30	MALIGNANT NEOPLASM OF NASAL CAVITY AND MIDDLE EAR	15	8	23
	8020/3 CARCINOMA, UNDIFFERENTIATED	1	1	2
	8070/3 SQUAMOUS CELL CARCINOMA	7	1	8
	8140/3 ADENOCARCINOMA	1	1	2
	8200/3 ADENOID CYSTIC CARCINOMA	0	1	1
	8430/3 MUOEPIDERMIOID CARCINOMA	1	0	1
	8720/3 MALIGNANT MELANOMA	0	1	1
	9500/3 NEUROBLASTOMA	1	2	3
	9590/3 MALIGNANT LYMPHOMA	3	0	3
	9702/3 PERIPHERAL T-CELL LYMPHOMA	1	0	1
	9757/3 DENDRITIC CELL SARCOMA	0	1	1
C31	MALIGNANT NEOPLASM OF ACCESSORY SINUSES	11	5	16
	8000/3 NEOPLASM, MALIGNANT, NOS	1	1	2
	8070/3 SQUAMOUS CELL CARCINOMA	7	3	10
	8140/3 ADENOCARCINOMA	2	0	2
	8200/3 ADENOID CYSTIC CARCINOMA	0	1	1
	8430/3 MUOEPIDERMIOID CARCINOMA	1	0	1
				0
C32	MALIGNANT NEOPLASM OF LARYNX	79	6	85
	8000/3 NEOPLASM, MALIGNANT, NOS	4	1	5

CODE	SITE	No. of Cases		
		MALE	FEMALE	TOTAL
	GRAND TOTAL	2606	3114	5720
	8070/3 SQUAMOUS CELL CARCINOMA	74	5	79
	8430/3 MUCOEPIDERMOID CARCINOMA	1	0	1
C33-C34	MALIGNANT NEOPLASM OF TRACHEA BRONCHUS AND LUNG	278	146	424
	8000/3 NEOPLASM, MALIGNANT, NOS	49	16	65
	8012/3 LARGE CELL CARCINOMA, NOS	3	1	4
	8020/3 CARCINOMA, UNDIFFERENTIATED	5	4	9
	8022/3 PLEOMORPHIC CARCINOMA	1	0	1
	8041/3 SMALL CELL CARCINOMA	15	5	20
	8046/3 NON-SMALL CELL CARCINOMA	62	19	81
	8070/3 SQUAMOUS CELL CARCINOMA	38	9	47
	8140/3 ADENOCARCINOMA	97	79	176
	8200/3 ADENOID CYSTIC CARCINOMA	0	2	2
	8246/3 NEUROENDOCRINE CARCINOMA, NOS	1	1	2
	8250/3 BRONCHIO-ALEVOLAR ADENOCARCINOMA	1	4	5
	8251/3 ALVEOLAR ADENOCARCINOMA	2	1	3
	8260/3 PAPILLARY ADENOCARCINOMA	0	1	1
	8430/3 MUCOEPIDERMOID CARCINOMA	2	1	3
	8560/3 ADENOSQUAMOUS CARCINOMA	1	1	2
	9590/3 MALIGNANT LYMPHOMA	1	1	2
	9680/3 MALIGNANT LYMPHOMA, LARGE CELL, DIFFUSE	0	1	1
C37	MALIGNANT NEOPLASM OF THYMUS	7	6	13
	8020/3 CARCINOMA, UNDIFFERENTIATED	1	0	1
	8082/3 LYMPHOEPITHELIAL CARCINOMA	1	0	1
	8580/3 THYMOMA, MALIGNANT	3	5	8
	8586/3 THYMIC CARCINOMA	2	1	3
C38	MALIGNANT NEOPLASM OF HEART, MEDIASTINUM AND PLEURA	3	0	3
	8020/3 CARCINOMA, UNDIFFERENTIATED	1	0	1
	9064/3 GERMINOMA	2	0	2
C40-C41	MALIGNANT NEOPLASM OF BONE AND CARTILAGE	29	25	54
	8000/3 NEOPLASM, MALIGNANT, NOS	3	2	5
	8830/3 FIBROUS HISTIOCYTOMA, MALIGNANT	1	0	1
	9180/3 OSTEOSARCOMA	15	13	28
	9220/3 CHONDROSARCOMA	4	4	8
	9250/3 GIANT CELL TUMOR OF BONE, MALIG	4	5	9
	9260/3 EWING'S SARCOMA	2	1	3
C43	MALIGNANT MELANOMA OF SKIN	13	11	24
	8720/3 MALIGNANT MELANOMA	13	11	24
C44	OTHER MALIGNANT NEOPLASM OF SKIN	70	66	136
	8000/3 NEOPLASM, MALIGNANT, NOS	2	0	2
	8020/3 CARCINOMA, UNDIFFERENTIATED	2	0	2
	8051/3 VERRUCOUS CARCINOMA	0	1	1
	8070/3 SQUAMOUS CELL CARCINOMA	29	20	49
	8090/3 BASAL CELL CARCINOMA	33	38	71
	8310/3 CLEAR CELL ADENOCARCINOMA CARCINOMA	0	1	1
	8403/3 MALIG ECCRINE SPIRADENOMA	0	2	2
	8410/3 SEBACEOUS ADENOCARCINOMA	2	1	3
	8832/3 DERMATOFIBROSARCOMA	2	2	4
	9120/3 HAEMANGIOSARCOMA	0	1	1
C46	KAPOSI'S SARCOMA	1	0	1
	9140/3 SAPOSI'S SARCOMA	1	0	1

CODE	SITE	No. of Cases		
		MALE	FEMALE	TOTAL
	GRAND TOTAL	2606	3114	5720
C47	MALIGNANT NEOPLASM OF PERIPHERAL NERVE AND AUTONOMIC NERVOUS SYSTEM	5	4	9
	8000/3 NEOPLASM, MALIGNANT	1	0	1
	9500/3 NEUROBLASTOMA	2	3	5
	9540/3 NEUROFIBROSARCOMA	2	0	2
	9560/3 NEURILEMMOMA, MALIGNANT	0	1	1
C48	MALIGNANT NEOPLASM OF RETROPERITONIUM AND PERTONIUM	1	1	2
	8850/3 LIPOSARCOMA	1	0	1
	9560/3 NEURILEMMOMA, MALIGNANT	0	1	1
C49	MALIGNANT NEOPLASM OF OTHER CONECTIVE TISSUD AND SOFT TISSUE	20	23	43
	8070/3 SQUAMOUS CELL CARCINOMA	0	1	1
	8246/3 NEUROENDOCRINE CARCINOMA	0	1	1
	8800/3 SARCOMA	1	1	2
	8801/3 SPINDLE CELL SARCOMA	3	1	4
	8804/3 EPITHELIOID SARCOMA	1	0	1
	8810/3 FIBROSARCOMA	0	2	2
	8830/3 FIBROUS HISTIOCYTOMA, MALIGNANT	2	1	3
	8850/3 LIPOSARCOMA	8	3	11
	8852/3 MYXOID LIPOSARCOMA	0	1	1
	8890/3 LEIOMYOSARCOMA	0	5	5
	8894/3 ANGIOMYOSARCOMA	1	0	1
	8900/3 RHABDOMYOSARCOMA	3	2	5
	8901/3 PLEOMORPHIC RHABDOMYOSARCOMA	0	1	1
	8910/3 EMBRYONAL RHABDOMYOSARCOMA	0	2	2
	9040/3 SYNOVIAL SARCOMA	1	1	2
	9150/3 HAEMANGIOPERICYTOMA, MALIGNANT	0	1	1
C50	MALIGNANT NEOPLASM OF BREAST	15	767	782
	8000/3 NEOPLASM, MALIGNANT, NOS	1	44	45
	8070/3 SQUAMOUS CELL CARCINOMA	0	1	1
	8140/3 ADENOCARCINOMA	0	6	6
	8260/3 PAPILLARY ADENOCARCINOMA	0	3	3
	8480/3 MUCINOUS ADENOCARCINOMA	0	2	2
	8500/2 INTRADUCTAL CARCINOMA	1	42	43
	8500/3 INFILTRATING DUCT CARCINOMA	12	640	652
	8510/3 MEDULLARY CARCINOMA, NOS	0	8	8
	8520/3 LOBULAR CARCINOMA	1	11	12
	8540/3 PAGET'S DISEASE, MAMMARY	0	2	2
	8541/3 PAGET'S AND INFILTRATING DUCT CA	0	2	2
	8560/3 ADENOSQUAMOUS CARCINOMA	0	1	1
	8980/3 CARCINOSACOMA	0	1	1
	9020/3 PHYLLODES TUMOUR, MALIGNANT	0	2	2
	9675/3 MALIGNANT MIXED SMALL AND LARGE CELL	0	1	1
	9680/3 MALIGNANT LARGE CELL, DIFFUSE	0	1	1
C51	MALIGNANT NEOPLASM OF VULVA	0	5	5
	8000/3 NEOPLASM, MALIGNANT, NOS	0	3	3
	8070/3 SQUAMOUS CELL CARCINOMA	0	2	2
C52	MALIGNANT NEOPLASM OF VAGINA	0	19	19
	8000/3 NEOPLASM, MALIGNANT	0	2	2
	8020/3 CARCINOMA, UNDIFFERENTIATED	0	1	1

CODE	SITE	No. of Cases		
		MALE	FEMALE	TOTAL
	GRAND TOTAL	2606	3114	5720
	8070/3 SQUAMOUS CELL CARCINOMA	0	4	4
	8072/3 SQUAMOUS CELL CARCINOMA, LARGE CELL, NONKERATINIING	0	6	6
	8140/3 ADENOCARCINOMA	0	3	3
	8720/3 MALIGNANT MELANOMA	0	3	3
C53	MALIGNANT NEOPLASM OF CERVIX	0	479	479
	8000/3 NEOPLASM, MALIGNANT, NOS	0	41	41
	8010/2 CARCINOMA IN SITU	0	27	27
	8020/3 CARCINOMA, UNDIFFERENTIATED	0	2	2
	8041/3 SMALL CELL CARCINOMA	0	1	1
	8050/3 PAPILLARY CARCINOMA	0	2	2
	8070/3 SQUAMOUS CELL CARCINOMA	0	115	115
	8071/3 SQUAMOUS CELL CARCINOMA, KERATINIING	0	9	9
	8072/3 SQUAMOUS CELL CARCINOMA, LARGE CELL, NONKERATINIING	0	174	174
	8077/2 SQUAMOUS INTRAEPITHELIAL NEOPLASIA, CIN III	0	2	2
	8140/2 ADENOCARCINOMA IN SITU	0	8	8
	8140/3 ADENOCARCINOMA	0	83	83
	8260/3 PAPILLARY ADENOCARCINOMA		1	
	8310/3 CLEAR CELL ADENOCARCINOMA	0	1	1
	8380/3 ENDOMETRIOD CARCINOMA	0	2	2
	8480/3 MUCINOUS ADENOCARCINOMA	0	2	2
	8500/3 INFILTRATING DUCT CARCINOMA	0	1	1
	8560/3 ADENOSQUAMOUS CARCINOMA	0	7	7
	9670/3 MALIGNANT LYMPHOMA, SMALL LYMPHOCYTIC	0	1	1
C54-C55	MALIGNANT NEOPLASM OF CORPUS UTERI AND UTERUS PART UNSPECIFIED	0	117	117
	8000/3 NEOPLASM, MALIGNANT, NOS	0	5	5
	8070/3 SQUAMOUS CELL CARCINOMA	0	2	2
	8140/3 ADENOCARCINOMA	0	49	49
	8260/3 PAPILLARY ADENOCARCINOMA	0	2	2
	8310/3 CLEAR CELL ADENOCARCINOMA	0	6	6
	8380/3 ADENOCARCINOMA, ENDOMETRIOD TYPE	0	46	46
	8480/3 MUCINOUS ADENOCARCINOMA	0	1	1
	8560/3 ADENOSQUAMOUS CARCINOMA	0	3	3
	8930/3 ENDOMETRIAL STROMAL SARCOMA	0	1	1
	8950/3 MULLERIAN MIXED TUMOUR	0	1	1
	8980/3 CARCINOMASARCOMA, NOS	0	1	1
C56	MALIGNANT NEOPLASM OF OVARY	0	112	112
	8000/3 NEOPLASM, MALIGNANT, NOS	0	9	9
	8020/3 CARCINOMA, UNDIFFERENTIATED	0	1	1
	8070/3 SQUAMOUS CELL CARCINOMA	0	1	1
	8140/3 ADENOCARCINOMA	0	24	24
	8260/3 PAPILLARY ADENOCARCINOMA	0	3	3
	8310/3 CLEAR CELL ADENOCARCINOMA	0	12	12
	8380/3 ADENOCARCINOMA, ENDOMETRIOD TYPE	0	9	9
	8440/3 CYSTADENOCARCINOMA	0	5	5
	8441/3 SEROUS CYSTADENOCARCINOMA	0	12	12
	8460/3 PAPILLARY SEROUS CYSTADENOCA	0	3	3
	8470/3 MUCINOUS CYSTADENOCARCINOMA	0	15	15
	8480/3 MUCINOUS ADENOCARCINOMA	0	6	6
	8620/3 GRANULOSA CELL TUMOUR	0	2	2
	8810/3 FIBROSARCOMA	0	1	1
	8950/3 MULLERIAN MIXED TUMOUR	0	1	1
	8951/3 MESODERMAL MIXED TUMOUR	0	1	1
	9064/3 GERMINOMA	0	1	1
	9071/3 ENDODERMAL SINUS TUMOUR	0	3	3

CODE	SITE	No. of Cases		
		MALE	FEMALE	TOTAL
	GRAND TOTAL	2606	3114	5720
	9080/3 TERATOMA, MALIGNANT	0	1	1
	9082/3 MALIGNANT TERATOMA, UNDIFF	0	1	1
	9085/3 MIXED GERM CELL TUMOUR	0	1	1
C57	MALIGNANT NEOPLASM OF OTHER AND UNSPECIFIED FEMALE GENITAL ORGANS	0	1	1
	8211/3 TUBULAR ADENOCARCINOMA	0	1	1
C58	MALIGNANT NEOPLASM OF PLACENTA	0	4	4
	9100/3 CHORIOCARCINOMA	0	4	4
C60	MALIGNANT NEOPLASM OF PENIS	18	0	18
	8000/3 NEOPLASM, MALIGNANT, NOS	2	0	2
	8051/3 VERRUCOUS CARCINOMA	1	0	1
	8070/3 SQUAMOUS CELL CARCINOMA	15	0	15
C61	MALIGNANT NEOPLASM OF PROSTATE	286	0	286
	8000/3 NEOPLASM, MALIGNANT, NOS	13	0	13
	8140/3 ADENOCARCINOMA	273	0	273
C62	MALIGNANT NEOPLASM OF TESTIS	7	0	7
	8246/3 NEUROENDOCRINE CARCINOMA	1	0	1
	9061/3 SEMINOMA	1	0	1
	9085/3 MIXED GERM CELL TUMOUR	1	0	1
	9590/3 MALIGNANT LYMPHOMA	1	0	1
	9680/3 MALIGNANT LYMPHOMA, LARGE CELL, DIFFUSE	3	0	3
C64	MALIGNANT NEOPLASM OF KIDNEY	26	8	34
	8260/3 PAPILLARY ADENOCARCINOMA	1	1	2
	8310/3 CLEAR CELL ADENOCARCINOMA	1	0	1
	8312/3 RENAL CELL CARCINOMA	24	6	30
	8960/3 NEPHROBLASTOMA (WILM TUMOUR)	0	1	1
C65	MALIGNANT NEOPLASM OF RENAL PELVIS	10	7	17
	8000/3 NEOPLASM, MALIGNANT	0	2	2
	8120/3 TRANSITIONAL CELL CARCINOMA	10	5	15
C67-C68	MALIGNANT NEOPLASM OF BLADDER AND OF OTHER AND UNSPECIFIED PART OF URINARY ORGANS	118	32	150
	8000/3 NEOPLASM, MALIGNANT, NOS	3	2	5
	8120/3 TRANSITIONAL CELL CARCINOMA	113	28	141
	8140/3 ADENOCARCINOMA	2	2	4
C69	MALIGNANT NEOPLASM OF EYE AND ADNEXA	21	11	32
	8000/3 NEOPLASM, MALIGNANT	2	0	2
	8070/3 SQUAMOUS CELL CARCINOMA	7	0	7
	8140/3 ADENOCARCINOMA	0	1	1
	8200/3 ADENOID CYSTIC CARCINOMA	0	1	1
	8426/3 NEUROENDOCRINE CARCINOMA	1	0	1
	8410/3 SEBACEOUS ADENOCARCINOMA	0	1	1
	8430/3 MUCOEPIDERMOID CARCINOMA	0	1	1
	8720/3 MALIGNANT MELANOMA	1	1	2
	8810/3 FIBROSARCOMA	1	0	1
	8830/3 FIBROUS HISTIOCYTOMA, MALIGNANT	1	0	1
	9510/3 RETINOBLASTOMA	7	5	12

CODE	SITE	No. of Cases		TOTAL
		MALE	FEMALE	
	GRAND TOTAL	2606	3114	5720
	9590/3 MALIGNANT LYMPHOMA	1	1	2
C70	MALIGNANT NEOPLASM OF MENIGES	4	7	11
	8000/3 NEOPLASM, MALIGNANT	0	4	4
	9530/3 MENINGIOMA, MALIGNANT	4	3	7
C71	MALIGNANT NEOPLASM OF BRAIN	41	21	62
	8000/3 NEOPLASM, MALIGNANT, NOS	7	7	14
	8246/3 NEUROENDOCRINE CARCINOMA	0	1	1
	9064/3 GERMINOMA	5	0	5
	9085/3 MIXED GERM CELL TUMOUR	2	0	2
	9150/3 HAENANGIOPERICYTOMA, MALIGNANT	1	0	1
	9380/3 GLIOMA, MALIGNANT	1	0	1
	9391/3 EPENDYMONA	0	2	2
	9400/3 ASTROCYTOMA	5	4	9
	9401/3 ASTROCYOTMA, ANAPLASTIC	3	1	4
	9440/3 GLIOBLASTOMA	7	3	10
	9450/3 OLIGODENDROGLIOMA	1	0	1
	9451/3 OLIGODENDROGLIOMA, ANAPLASTIC	1	0	1
	9470/3 MEDULLOBLASTOMA	6	2	8
	9500/3 NEUROBLASTOMA	1	0	1
	9590/3 MALIGNANT LYMPHOMA	1	1	2
C73	MALIGNANT NEOPLASM OF THYROID	35	155	190
	8000/3 NEOPLASM, MALIGNANT, NOS	0	2	2
	8020/3 CARCINOMA, UNDIFFERENTIATED	1	0	1
	8021/3 CARCINOMA, ANAPLASTIC	2	4	6
	8070/3 SQUAMOUS CELL CARCINOMA	1	0	1
	8260/3 PAPILLARY ADENOCARCINOMA	1	7	8
	8290/3 OXYPHILIC ADENOCARCINOMA	1	0	1
	8330/3 FOLLICULAR ADENOCARCINOMA	8	21	29
	8337/3 INSULAR CARCINOMA	0	1	1
	8340/3 PAPILLARY CAR FOLLICULA VARIANT	20	115	135
	8341/3 PAPILLARY MICROCARCINOMA	0	1	1
	8345/3 MEDULLAR CA, AMYLOID STROMA	0	4	4
	9590/3 MALIGNANT LYMPHOMA	1	0	1
C74	MALIGNANT NEOPLASM OF ADRENAL GLAND	5	1	6
	8000/3 NEOPLASM, MALIGNANT, NOS	3	0	3
	8020/3 CARCINOMA, UNDIFFERENTIATED	1	0	1
	8370/3 ADRENAL CORTICAL CARCINOMA	1	1	2
C75	MALIGNANT NEOPLASM OF OTHER ENDOCRINE GLANDS AND RELATE STRUCTURES	6	6	12
	8000/3 NEOPLASM, MALIGNANT	4	4	8
	8272/3 PITUITARY CARCINOMA	1	2	3
	9080/3 TERATOMA, MALIGNANT	1	0	1
C76-C80	MALIGNANT NEOPLASM WITHOUT SPECIFIED SITE AND METASTATIC MALGNANT IN VARIOUS SITES	149	126	275
	8000/3 NEOPLASM, MALIGNANT, NOS	33	28	61
	8010/3 CARCINOMA	2	1	3
	8012/3 LARGE CELL CARCINOMA	3	0	3
	8020/3 CARCINOMA, UNDIFFERENTIATED	8	7	15
	8021/3 CARCINOMA, ANAPLASTIC	1	2	3

CODE	SITE	No. of Cases		
		MALE	FEMALE	TOTAL
	GRAND TOTAL	2606	3114	5720
8022/3	PLEOMORPHIC CARCINOMA	1	0	1
8032/3	SPINDLE CELL CARCINOMA	1	1	2
8033/3	PSEUDOSARCOMATOUS CARCINOMA	1	0	1
8041/3	SMALL CELL CARCINOMA	2	0	2
8050/3	PAPILLARY CARCINOMA	0	2	2
8070/3	SQUAMOUS CELL CARCINOMA	19	14	33
8082/3	LYMPHOEPITHELIAL CARCINOMA	1	0	1
8140/3	ADENOCARCINOMA	65	53	118
8200/3	ADENOID CYSTIC CARCINOMA	0	2	2
8246/3	NEUROENDOCRINE CARCINOMA	1	3	4
8260/3	PAPILLARY ADENOCARCINOMA	1	2	3
8310/3	CLEAR CELL ADENOCARCINOMA	0	1	1
8430/3	MUCOEPIDERMAL CARCINOMA	2	0	2
8440/3	CYSTADENOCARCINOMA	0	1	1
8480/3	MUCINOUS ADENOCARCINOMA	2	2	4
8490/3	SIGNET RING CELL CARCINOMA	0	1	1
8560/3	ADENOSQUAMOUS CARCINOMA	0	1	1
8800/3	SARCOMA	0	1	1
8900/3	RHABDOMYOSARCOMA	1	0	1
9040/3	SYNOVIAL SARCOMA	1	0	1
9064/3	GERMINOMA	3	2	5
9071/3	ENDODERMAL SINUS TUMOUR	0	2	2
9370/3	CHORDOMA	1	0	1
C81	HODGKIN'S DISEASE	8	15	23
9590/3	MALIGNANT LYMPHOMA	0	1	1
9650/3	HODGKIN'S DISEASE	8	14	22
C82	FOLLICULAR NON-HODGKIN'S LYMPHOMA	2	4	6
9590/3	MALIGNANT LYMPHOMA	0	1	1
9675/3	MALIGNANT MIXED SMALL AND LARGE CELL	2	2	4
9690/3	MALIGNANT LYMPHOMA, FOLLICULAR	0	1	1
C83	DIFFUSE NON-HODGKIN'S LYMPHOMA	11	6	17
9590/3	MALIGNANT LYMPHOMA	3	2	5
9670/3	MALIGNANT LYMPHOMA, SMALL LYMPHOCYTIC	0	1	1
9671/3	MALIGNANT LYMPHOMA, LYMPHOPLASMACYTIC	1	1	2
9675/3	MALIGNANT LYMPHOMA, MIXED SMALL AND LARGE CELL	1	0	1
9680/3	MALIGNANT LARGE CELL DIFFUSE	3	2	5
9687/3	BURKITT'S LYMPHOMA	3	0	3
C84	PERIPHERAL AND CUTANEOUS T-CELL LYMPHOMA	4	5	9
9590/3	MALIGNANT LYMPHOMA	0	2	2
9680/3	MALIGNANT LARGE CELL, DIFF	1	0	1
9700/3	MYCOSIS FUNGOIDES	2	0	2
9701/3	SEARY'S DISEASE	0	1	1
9702/3	PERIPHERAL T-CELL LYMPHOMA	0	1	1
9705/3	AILD, PERIPHERAL T-CELL LYMPHOMA	1	1	2
C85	OTHER AND UNSPECIFIED TYPE OF NON-HODGKIN LYMPHOMA	134	138	272
8020/3	CARCINOMA, UNDIFFERENTIATED	1	0	1
9590/3	MALIGNANT LYMPHOMA	103	104	207
9670/3	MALIGNANT LYMPHOMA, SMALL LYMPHOCYTIC	1	2	3
9675/3	MALIGNANT LYMPHOMA, MIXED SMALL AND LARGE CELL, DIFFUSE	9	10	19
9680/3	MALIGNANT LYMPHOMA, LARGE CELL, DIFFUSE	16	19	35
9690/3	MALIGNANT LYMPHOMA, FOLLICULAR	2	0	2

CODE	SITE	No. of Cases		
		MALE	FEMALE	TOTAL
	GRAND TOTAL	2606	3114	5720
	9702/3 PERIPHERAL T-CELL LYMPHOMA	1	2	3
	9754/3 LETTERER-SIEWE DISEASE	1	1	2
C88	MALIGNANT IMMUNOPROLIPHERATIVE DISEASE	1	2	3
	9760/3 IMMUNOPROLIPHERATIVE DISEASE	0	1	1
	9761/3 WALDENSTROM'S MACROGLOBULINAEMIA	1	1	2
C90	MULTIPLE MYELOMA AND MALIGNANT PLASMA CELL NEOPLASM	18	26	44
	9731/3 PLASMACYTOMA	1	0	1
	9732/3 MULTIPLE MYELOMA	17	26	43
C91	LYMPHOID LEUKAEMIA	63	55	118
	9820/3 LYMPHOID LEUKAEMIA	0	2	2
	9823/3 CHRONIC LYMPHOCYTIC LEUKAEMIA	14	12	26
	9827/3 ADULT T-CELL LEULAEMIA/LYMPHOMA	0	1	1
	9835/3 ACUTE LYMPHOBLASTIC LEUKAEMIA	49	40	89
C92	MYELOID LEUKAEMIA	64	66	130
	9861/3 ACUTE MYELOID LEUKAEMIA	32	28	60
	9863/3 CHRONIC MYELOID LEUKAEMIA	23	26	49
	9866/3 ACUTE MYLOID LEUKAMIA	6	7	13
	9867/3 ACUTE MYELOMONOCYTIC LEUKAEMIA	2	4	6
	9875/3 CHR MYLOGENOUS LEU, BCR/ABL+VE	1	1	2
C93	MONOCYTIC LEUKAEMIA	5	1	6
	9891/3 ACUTE MONOCYTIC LEUKAEMIA	5	1	6
C94-C95	OTHER SPECIFIED AND UNSPECIFIED LEUKAEMIA	15	19	34
	9800/3 LEUKAEMIA	0	5	5
	9801/3 ACUTE LEUKAEMIA	11	13	24
	9931/3 ACUTE PANMYELOSIS	4	0	4
	9961/3 MYELOSCLERSIS WITH MYELOID META	0	1	1
C96	OTHER AND UNSPECIFIED MALIGNANT NEOPLASM OF LYMPHOID, HAEMATIC, AND RELATED TISSUE	4	2	6
	9741/3 MALIGNANT MASTOCYTOSIS	1	0	1
	9750/3 MALIGNANT HISTIOCYTOSIS	3	2	5

TABLE VI
THE TEN LEADING SITES

Site	MALE	FEALE	TOTAL	%
All Sites	2606	3114	5720	100.00
Breast	15	767	782	13.67
Cervix	0	479	479	8.37
Liver	324	130	454	7.94
Colon and Rectum	243	204	447	7.81
Lung	278	146	424	7.41
Lymphoma	159	168	327	5.72
Leukaemia	147	141	288	5.03
Prostate	286	0	286	5.00
Thyroid	35	155	190	3.32
Oral cavity	106	69	175	3.06

TABLE VI.I
THE TEN LEADING SITES

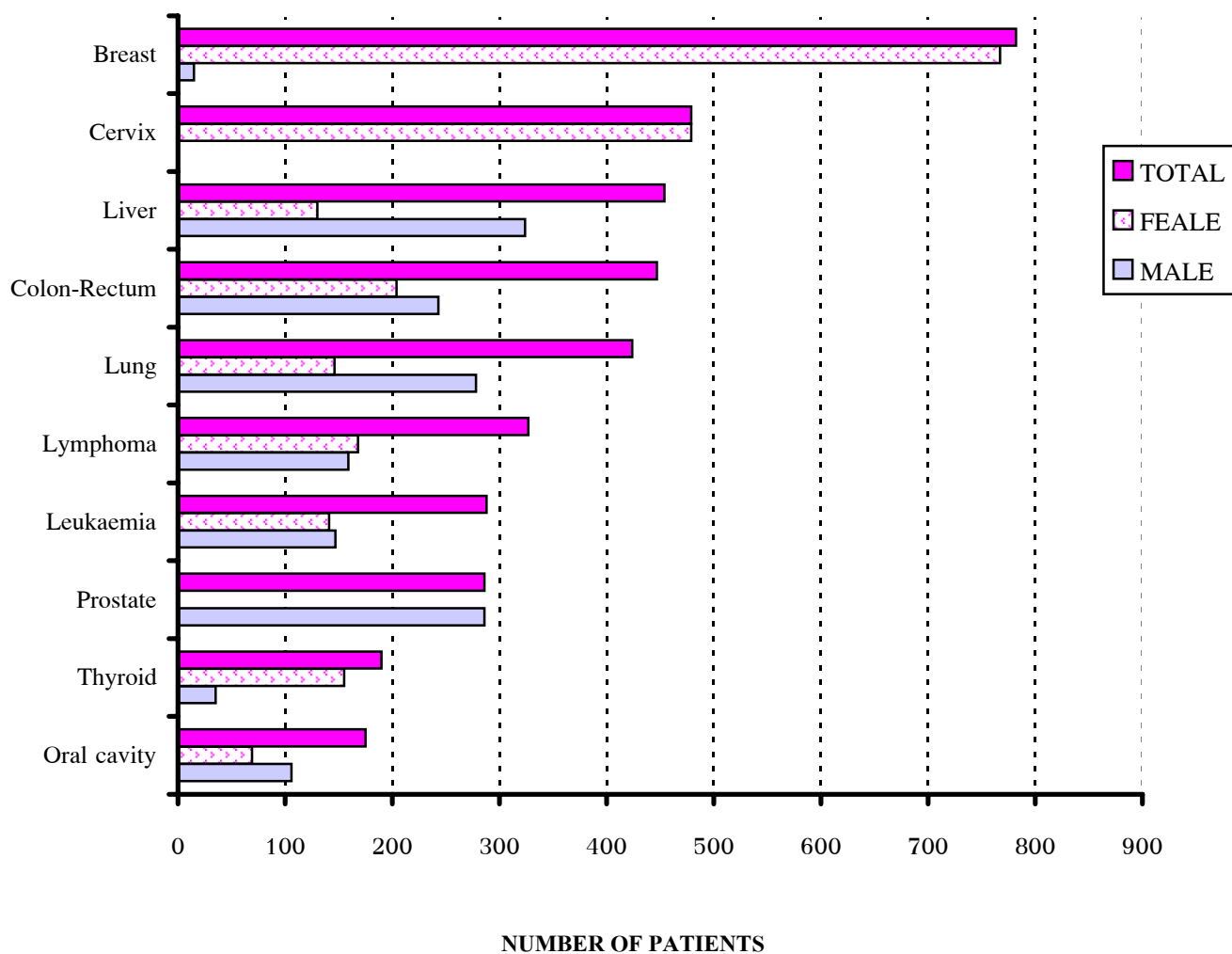


TABLE VII
MALIGNANT NEOPLASM IN CHILDHOOD

Code		No. of cases			>0-4		5-9		10-15	
		Total	M	F	M	F	M	F	M	F
Total		153	88	65	29	25	21	19	38	21
C00-C06	Oral cavity	1	0	1	0	1	0	0	0	0
C07-C08	Salivary Gland	1	1	0	0	0	0	0	1	0
C17	Small Intestine	1	1	0	0	0	1	0	0	0
C22	Liver	12	8	4	6	3	0	1	2	0
C25-C26	Pancrease	1	1	0	0	0	0	0	1	0
C40-C41	Bone and joint	8	5	3	0	0	0	0	5	3
C45-C49	Soft tissue	8	3	5	2	4	1	1	0	0
C50	Breast	1	0	1	0	0	0	1	0	0
C56-C57	Ovary and adnexa	6	0	6	0	0	0	3	0	3
C64-C65	Kidney	2	0	2	0	1	0	0	0	1
C69	Eye and adnexa	13	8	5	7	3	1	2	0	0
C71-C72	Brain and cord	21	14	7	6	2	3	2	5	3
C73	Thyroid	1	1	0	0	0	0	0	1	0
C74-C75	Endocrine gland	3	3	0	1	0	1	0	1	0
C76-C80	Ill defined site	6	2	4	1	1	0	2	1	1
C81	Hodgkin's	1	1	0	0	0	0	0	1	0
C80-C89	Lymphoma	17	10	7	1	3	3	1	6	3
C91	Lymphoid leukemia	31	19	12	2	4	9	2	8	6
C92	Myeloid leukemia	11	7	4	2	1	2	2	3	1
C94-CC96	Other leukemia	8	4	4	1	2	0	2	3	0

TABLE VIII

PRIMARY SITES AS TO AGE AND SEX

SITE / Age-Group		Under 1	1+	5+	10+	15+	20+	25+	30+	35+	40+	45+	50+	55+	60+	65+	70+	75+	80+	85+	90+	95+	Unknown	
GRAND TOTAL		5720	0	54	40	59	69	70	123	185	293	466	576	680	598	622	649	548	388	190	82	14	3	11
MALE		2606	0	29	21	38	42	30	36	61	95	139	200	255	259	330	373	333	211	97	41	9	0	7
FEMALE		3114	0	25	19	21	27	40	87	124	198	327	376	425	339	292	276	215	177	93	41	5	3	4
Upper lip	T	1	0	0	0	0	0	0	0	0	0	0	0	0	0	0	1	0	0	0	0	0	0	0
	M	0	0	0	0	0	0	0	0	0	0	0	0	0	0	0	0	0	0	0	0	0	0	0
	F	1	0	0	0	0	0	0	0	0	0	0	0	0	0	0	1	0	0	0	0	0	0	0
Lower lip	T	12	0	0	0	0	0	0	0	1	0	0	0	1	0	0	2	5	3	0	0	0	0	0
	M	1	0	0	0	0	0	0	0	0	0	0	0	0	0	0	0	1	0	0	0	0	0	0
	F	11	0	0	0	0	0	0	0	1	0	0	0	1	0	0	2	4	3	0	0	0	0	0
Base of tongue	T	26	0	0	0	0	0	0	0	0	4	2	4	2	3	1	4	3	1	2	0	0	0	0
	M	22	0	0	0	0	0	0	0	0	3	1	3	2	3	1	4	3	1	1	0	0	0	0
	F	4	0	0	0	0	0	0	0	0	1	1	1	0	0	0	0	0	0	1	0	0	0	0
Tongue, unspecified	T	55	0	0	0	0	1	1	1	3	4	8	8	3	9	5	6	2	2	2	0	0	0	0
	M	33	0	0	0	0	0	1	0	1	2	5	7	2	6	3	3	0	2	1	0	0	0	0
	F	22	0	0	0	0	1	0	1	2	2	3	1	1	3	2	3	2	0	1	0	0	0	0
Gum	T	11	0	0	0	0	0	0	1	1	0	1	2	0	0	2	2	0	1	1	0	0	0	0
	M	6	0	0	0	0	0	0	0	1	0	1	2	0	0	1	1	0	0	0	0	0	0	0
	F	5	0	0	0	0	0	0	1	0	0	0	0	0	0	1	1	0	1	1	0	0	0	0
Floor of mouth	T	24	0	0	0	0	0	0	0	0	2	2	1	6	1	2	3	3	3	1	0	0	0	0
	M	19	0	0	0	0	0	0	0	0	1	2	1	6	1	2	2	2	2	0	0	0	0	0
	F	5	0	0	0	0	0	0	0	0	1	0	0	0	0	0	1	1	1	1	0	0	0	0
Palate	T	27	0	0	0	0	0	0	1	1	2	3	2	3	4	3	3	3	1	0	0	0	0	1
	M	18	0	0	0	0	0	0	0	1	1	2	0	3	3	2	2	3	0	0	0	0	0	1
	F	9	0	0	0	0	0	0	0	1	0	1	1	2	0	1	1	1	0	1	0	0	0	0
Buccal mucosa	T	17	0	1	0	0	0	0	0	1	1	1	1	1	0	2	3	2	4	0	0	0	0	0
	M	6	0	0	0	0	0	0	0	1	1	0	0	1	0	1	1	0	1	0	0	0	0	0
	F	11	0	1	0	0	0	0	0	0	0	1	1	0	0	1	2	2	3	0	0	0	0	0
Mouth part, unspecified	T	2	0	0	0	0	1	0	0	0	0	0	0	0	0	0	1	0	0	0	0	0	0	0
	M	1	0	0	0	0	0	0	0	0	0	0	0	0	0	0	1	0	0	0	0	0	0	0
	F	1	0	0	0	0	1	0	0	0	0	0	0	0	0	0	0	0	0	0	0	0	0	0

SITE / Age-Group		Under 1	1+	5+	10+	15+	20+	25+	30+	35+	40+	45+	50+	55+	60+	65+	70+	75+	80+	85+	90+	95+	Unknown	
Parotid gland	T	20	0	0	0	1	0	0	1	0	3	1	2	3	3	2	0	3	0	1	0	0	0	0
	M	14	0	0	0	1	0	0	1	0	2	1	2	2	1	1	0	2	0	1	0	0	0	0
	F	6	0	0	0	0	0	0	0	0	1	0	0	1	2	1	0	1	0	0	0	0	0	0
Salivary gland, unspecified	T	4	0	0	0	0	1	0	0	0	0	0	2	0	1	0	0	0	0	0	0	0	0	0
	M	3	0	0	0	0	0	0	0	0	0	0	2	0	1	0	0	0	0	0	0	0	0	0
	F	1	0	0	0	0	1	0	0	0	0	0	0	0	0	0	0	0	0	0	0	0	0	0
Tonsil	T	16	0	0	0	0	0	0	0	1	0	0	2	0	4	2	3	2	2	0	0	0	0	0
	M	10	0	0	0	0	0	0	0	0	0	0	2	0	3	2	1	2	0	0	0	0	0	0
	F	6	0	0	0	0	0	0	0	1	0	0	0	0	1	0	2	0	2	0	0	0	0	0
Oropharynx	T	7	0	0	0	0	0	0	0	0	1	0	0	1	1	0	1	1	1	1	0	0	0	0
	M	6	0	0	0	0	0	0	0	0	1	0	0	1	1	0	1	0	1	1	0	0	0	0
	F	1	0	0	0	0	0	0	0	0	0	0	0	0	0	0	0	1	0	0	0	0	0	0
Nasopharynx	T	128	0	0	0	0	4	3	2	10	18	17	18	17	15	8	6	5	2	2	1	0	0	0
	M	95	0	0	0	0	4	1	2	5	13	12	16	10	13	6	6	3	2	2	0	0	0	0
	F	33	0	0	0	0	0	2	0	5	5	5	2	7	2	2	0	2	0	0	1	0	0	0
Pyriform sinus	T	21	0	0	0	0	0	0	0	0	1	0	0	1	3	5	3	6	2	0	0	0	0	0
	M	17	0	0	0	0	0	0	0	0	1	0	0	1	2	4	3	5	1	0	0	0	0	0
	F	4	0	0	0	0	0	0	0	0	0	0	0	0	1	1	0	1	1	0	0	0	0	0
Hypopharynx	T	11	0	0	0	0	0	0	0	0	0	1	0	1	2	1	2	3	1	0	0	0	0	0
	M	10	0	0	0	0	0	0	0	0	0	1	0	1	1	1	2	3	1	0	0	0	0	0
	F	1	0	0	0	0	0	0	0	0	0	0	0	0	1	0	0	0	0	0	0	0	0	0
Oral and pharynx unspecified	T	7	0	0	0	0	0	0	0	0	0	0	0	1	2	0	2	1	1	0	0	0	0	0
	M	6	0	0	0	0	0	0	0	0	0	0	0	0	2	0	2	1	1	0	0	0	0	0
	F	1	0	0	0	0	0	0	0	0	0	0	0	1	0	0	0	0	0	0	0	0	0	0
Esophagus	T	71	0	0	0	0	0	1	0	1	1	0	3	9	8	9	17	11	4	7	0	0	0	0
	M	58	0	0	0	0	0	1	0	1	1	0	2	8	6	7	15	8	4	5	0	0	0	0
	F	13	0	0	0	0	0	0	0	0	0	0	1	1	2	2	2	3	0	2	0	0	0	0
Stomach	T	110	0	0	0	0	1	0	2	3	4	4	8	14	7	11	18	18	11	7	1	1	0	0
	M	54	0	0	0	0	0	0	0	1	1	1	2	6	4	8	10	9	7	5	0	0	0	0
	F	56	0	0	0	0	1	0	2	2	3	3	6	8	3	3	8	9	4	2	1	1	0	0
Small intestine	T	16	0	0	1	0	0	0	0	0	0	1	2	5	2	0	3	1	0	1	0	0	0	0
	M	4	0	0	1	0	0	0	0	0	0	0	0	3	0	0	0	0	0	0	0	0	0	0
	F	12	0	0	0	0	0	0	0	0	0	1	2	2	2	0	3	1	0	1	0	0	0	0
Colon	T	275	0	0	0	0	0	4	3	6	13	22	26	33	39	44	37	29	12	7	0	0	0	0
	M	145	0	0	0	0	0	3	1	3	5	10	13	19	26	28	19	9	7	2	0	0	0	0
	F	130	0	0	0	0	0	0	1	2	3	8	12	13	14	13	16	18	20	5	5	0	0	0

SITE / Age-Group		Under 1	1+	5+	10+	15+	20+	25+	30+	35+	40+	45+	50+	55+	60+	65+	70+	75+	80+	85+	90+	95+	Unknown
Rectosigmoid	T	21	0	0	0	0	0	0	0	0	2	1	5	2	2	4	3	2	0	0	0	0	0
	M	14	0	0	0	0	0	0	0	0	1	1	3	2	1	3	2	1	0	0	0	0	0
	F	7	0	0	0	0	0	0	0	0	1	0	2	0	1	1	1	1	0	0	0	0	0
Rectum	T	151	0	0	0	0	0	1	1	5	3	15	20	22	16	22	18	11	8	7	0	0	2
	M	84	0	0	0	0	0	0	1	3	2	6	12	11	14	11	11	5	3	4	0	0	1
	F	67	0	0	0	0	0	1	0	2	1	9	8	11	2	11	7	6	5	3	0	0	1
Anus and anal canal	T	9	0	0	0	0	1	0	0	0	1	1	1	1	1	0	0	1	1	1	0	0	0
	M	4	0	0	0	0	0	0	0	0	0	1	1	0	0	0	0	1	0	1	0	0	0
	F	5	0	0	0	0	1	0	0	0	1	0	0	1	1	0	0	0	1	0	0	0	0
Liver	T	454	0	9	1	2	1	4	9	19	37	39	67	66	68	61	37	20	13	0	0	1	0
	M	324	0	6	0	2	1	1	3	16	30	27	52	47	55	46	20	12	6	0	0	0	0
	F	130	0	3	1	0	0	3	6	3	7	12	15	19	13	15	17	8	7	0	0	1	0
Gall bladder	T	18	0	0	0	0	0	0	1	0	0	1	0	4	2	3	4	3	0	0	0	0	0
	M	6	0	0	0	0	0	0	0	0	0	0	0	1	2	2	1	0	0	0	0	0	0
	F	12	0	0	0	0	0	0	1	0	0	1	0	3	0	1	3	3	0	0	0	0	0
Biliary tract	T	22	0	0	0	0	1	0	0	0	0	2	4	2	5	0	3	3	2	0	0	0	0
	M	9	0	0	0	0	0	0	0	0	0	0	1	2	2	0	1	1	2	0	0	0	0
	F	13	0	0	0	0	1	0	0	0	0	2	3	0	3	0	2	2	0	0	0	0	0
Pancreas	T	64	0	0	1	1	0	1	0	1	1	3	6	14	9	10	8	6	2	0	1	0	0
	M	35	0	0	1	1	0	0	0	1	1	0	4	9	7	6	2	2	1	0	0	0	0
	F	29	0	0	0	0	0	1	0	0	0	3	2	5	2	4	6	4	1	0	1	0	0
Nasal cavity and middle ear	T	23	0	0	0	0	0	0	2	0	2	4	2	2	4	2	4	1	0	0	0	0	0
	M	15	0	0	0	0	0	0	1	0	2	2	1	1	2	1	4	1	0	0	0	0	0
	F	8	0	0	0	0	0	0	1	0	0	2	1	1	2	1	0	0	0	0	0	0	0
Accessory sinus	T	16	0	0	0	0	1	0	0	0	0	3	2	3	4	1	0	0	1	1	0	0	0
	M	11	0	0	0	0	1	0	0	0	0	2	1	1	4	0	0	0	1	1	0	0	0
	F	5	0	0	0	0	0	0	0	0	0	1	1	2	0	1	0	0	0	0	0	0	0
Larynx	T	85	0	0	0	0	0	0	1	2	2	8	9	4	18	13	11	13	0	4	0	0	0
	M	79	0	0	0	0	0	0	0	2	2	7	8	4	18	13	9	12	0	4	0	0	0
	F	6	0	0	0	0	0	0	1	0	0	1	1	0	0	0	2	1	0	0	0	0	0
Lung and trachea	T	424	0	0	0	0	2	2	1	7	11	17	32	51	54	46	80	53	46	16	5	1	0
	M	278	0	0	0	0	1	1	1	5	6	9	21	27	30	31	63	43	28	10	1	1	0
	F	146	0	0	0	0	1	1	0	2	5	8	11	24	24	15	17	10	18	6	4	0	0
Thymus	T	13	0	0	0	0	1	0	0	0	3	2	2	3	0	1	0	0	1	0	0	0	0
	M	7	0	0	0	0	1	0	0	0	2	1	2	1	0	0	0	0	0	0	0	0	0
	F	6	0	0	0	0	0	0	0	0	1	1	0	2	0	1	0	0	1	0	0	0	0

SITE / Age-Group		Under 1	1+	5+	10+	15+	20+	25+	30+	35+	40+	45+	50+	55+	60+	65+	70+	75+	80+	85+	90+	95+	Unknown
Mediastinum	T	3	0	0	0	0	1	0	1	0	0	1	0	0	0	0	0	0	0	0	0	0	0
	M	3	0	0	0	0	1	0	1	0	0	1	0	0	0	0	0	0	0	0	0	0	0
	F	0	0	0	0	0	0	0	0	0	0	0	0	0	0	0	0	0	0	0	0	0	0
Bone and joint	T	54	0	0	0	8	13	7	7	2	5	3	3	1	2	1	0	0	0	2	0	0	0
	M	29	0	0	0	5	6	5	4	2	2	2	1	1	0	1	0	0	0	0	0	0	0
	F	25	0	0	0	3	7	2	3	0	3	1	2	0	2	0	0	0	0	2	0	0	0
Melanoma of skin	T	24	0	0	0	0	0	1	0	1	0	3	2	4	1	2	4	3	0	1	2	0	0
	M	13	0	0	0	0	0	0	0	1	0	3	1	2	1	1	1	2	0	0	1	0	0
	F	11	0	0	0	0	0	1	0	0	0	0	1	2	0	1	3	1	0	1	1	0	0
Skin	T	136	0	0	0	0	1	1	1	2	2	6	8	13	9	13	14	22	18	8	15	1	1
	M	70	0	0	0	0	1	0	1	0	0	2	5	7	4	8	7	14	10	1	8	1	0
	F	66	0	0	0	0	0	1	0	2	2	4	3	6	5	5	7	8	8	7	7	0	1
Kaposi's sarcoma	T	1	0	0	0	0	0	0	0	0	0	1	0	0	0	0	0	0	0	0	0	0	0
	M	1	0	0	0	0	0	0	0	0	0	1	0	0	0	0	0	0	0	0	0	0	0
	F	0	0	0	0	0	0	0	0	0	0	0	0	0	0	0	0	0	0	0	0	0	0
Peripheral nerve	T	9	0	3	1	0	0	0	0	0	0	1	1	0	1	1	0	0	0	0	0	0	1
	M	5	0	2	0	0	0	0	0	0	0	1	1	0	1	0	0	0	0	0	0	0	0
	F	4	0	1	1	0	0	0	0	0	0	0	0	0	0	1	0	0	0	0	0	0	1
Retro and peritonium	T	2	0	0	0	0	0	0	0	1	0	0	0	0	0	0	1	0	0	0	0	0	0
	M	1	0	0	0	0	0	0	0	1	0	0	0	0	0	0	0	0	0	0	0	0	0
	F	1	0	0	0	0	0	0	0	0	0	0	0	0	0	0	1	0	0	0	0	0	0
Connective and soft tissue	T	43	0	3	1	0	3	1	3	3	2	1	7	6	3	3	2	3	1	0	0	0	1
	M	20	0	0	1	0	1	1	0	1	1	0	5	5	1	0	1	2	1	0	0	0	0
	F	23	0	3	0	0	2	0	3	2	1	1	2	1	2	3	1	1	0	0	0	0	1
Breast	T	782	0	0	1	0	1	0	15	29	63	123	138	135	83	71	49	38	16	15	3	0	2
	M	15	0	0	0	0	0	0	0	0	1	2	2	2	1	1	2	1	1	1	0	0	1
	F	767	0	0	1	0	1	0	15	29	62	121	136	133	82	70	47	37	15	14	3	0	1
Vulva	T	5	0	0	0	0	1	0	0	0	0	0	0	0	1	0	1	1	1	0	0	0	0
	M	0	0	0	0	0	0	0	0	0	0	0	0	0	0	0	0	0	0	0	0	0	0
	F	5	0	0	0	0	1	0	0	0	0	0	0	0	1	0	1	1	1	0	0	0	0
Vagina	T	19	0	0	0	0	0	0	0	0	0	2	3	2	1	6	2	2	0	1	0	0	0
	M	0	0	0	0	0	0	0	0	0	0	0	0	0	0	0	0	0	0	0	0	0	0
	F	19	0	0	0	0	0	0	0	0	0	2	3	2	1	6	2	2	0	1	0	0	0
Cervix uteri	T	479	0	0	0	0	0	8	18	46	81	61	78	50	35	42	24	27	7	2	0	0	0
	M	0	0	0	0	0	0	0	0	0	0	0	0	0	0	0	0	0	0	0	0	0	0
	F	479	0	0	0	0	0	8	18	46	81	61	78	50	35	42	24	27	7	2	0	0	0

SITE / Age-Group		Under 1	1+	5+	10+	15+	20+	25+	30+	35+	40+	45+	50+	55+	60+	65+	70+	75+	80+	85+	90+	95+	Unknown	
Corpus uteri	T	117	0	0	0	0	0	0	1	0	3	11	13	17	29	17	14	4	6	1	1	0	0	0
	M	0	0	0	0	0	0	0	0	0	0	0	0	0	0	0	0	0	0	0	0	0	0	0
	F	117	0	0	0	0	0	0	1	0	3	11	13	17	29	17	14	4	6	1	1	0	0	0
Ovary	T	112	0	0	3	3	1	2	2	4	10	10	17	22	15	13	4	2	3	1	0	0	0	0
	M	0	0	0	0	0	0	0	0	0	0	0	0	0	0	0	0	0	0	0	0	0	0	0
	F	112	0	0	3	3	1	2	2	4	10	10	17	22	15	13	4	2	3	1	0	0	0	0
Female genital organ	T	1	0	0	0	0	0	0	0	1	0	0	0	0	0	0	0	0	0	0	0	0	0	0
	M	0	0	0	0	0	0	0	0	0	0	0	0	0	0	0	0	0	0	0	0	0	0	0
	F	1	0	0	0	0	0	0	0	0	1	0	0	0	0	0	0	0	0	0	0	0	0	0
Placenta	T	4	0	0	0	0	0	1	0	1	1	0	1	0	0	0	0	0	0	0	0	0	0	0
	M	0	0	0	0	0	0	0	0	0	0	0	0	0	0	0	0	0	0	0	0	0	0	0
	F	4	0	0	0	0	0	1	0	1	1	0	1	0	0	0	0	0	0	0	0	0	0	0
Penis	T	18	0	0	0	0	0	1	0	1	3	3	2	1	1	2	0	3	1	0	0	0	0	0
	M	18	0	0	0	0	0	1	0	1	3	3	2	1	1	2	0	3	1	0	0	0	0	0
	F	0	0	0	0	0	0	0	0	0	0	0	0	0	0	0	0	0	0	0	0	0	0	0
Prostate	T	286	0	0	0	0	0	0	0	1	0	1	8	19	42	62	68	51	19	10	5	0	0	0
	M	286	0	0	0	0	0	0	0	1	0	1	8	19	42	62	68	51	19	10	5	0	0	0
	F	0	0	0	0	0	0	0	0	0	0	0	0	0	0	0	0	0	0	0	0	0	0	0
Testis	T	7	0	0	0	0	0	0	2	1	0	0	1	0	0	2	1	0	0	0	0	0	0	0
	M	7	0	0	0	0	0	0	2	1	0	0	1	0	0	2	1	0	0	0	0	0	0	0
	F	0	0	0	0	0	0	0	0	0	0	0	0	0	0	0	0	0	0	0	0	0	0	0
Kidney, exclude renal pelvis	T	34	0	1	0	1	0	1	0	1	0	6	6	2	4	6	5	1	0	0	0	0	0	0
	M	26	0	0	0	0	0	0	0	1	0	6	6	1	4	4	3	1	0	0	0	0	0	0
	F	8	0	1	0	1	0	1	0	0	0	0	0	1	0	2	2	0	0	0	0	0	0	0
Renal pelvis	T	17	0	0	0	0	0	0	0	1	1	1	1	1	5	3	2	1	0	1	0	0	0	0
	M	10	0	0	0	0	0	0	0	1	1	1	1	1	1	2	1	1	0	0	0	0	0	0
	F	7	0	0	0	0	0	0	0	0	0	0	0	0	4	1	1	0	0	1	0	0	0	0
Bladder	T	149	0	0	0	0	0	0	2	3	2	8	8	9	18	22	31	20	16	7	2	0	1	1
	M	117	0	0	0	0	0	0	1	0	2	5	8	6	14	20	27	16	11	4	2	0	1	1
	F	32	0	0	0	0	0	0	1	3	0	3	0	3	4	2	4	4	5	3	0	0	0	0
Other urinary organ	T	1	0	0	0	0	0	0	0	0	0	0	0	1	0	0	0	0	0	0	0	0	0	0
	M	1	0	0	0	0	0	0	0	0	0	0	0	1	0	0	0	0	0	0	0	0	0	0
	F	0	0	0	0	0	0	0	0	0	0	0	0	0	0	0	0	0	0	0	0	0	0	0
Eye and adnexa	T	32	0	10	3	0	0	1	2	1	3	1	2	1	3	1	2	2	0	0	0	0	0	0
	M	21	0	7	1	0	0	0	0	1	2	1	1	1	3	1	2	1	0	0	0	0	0	0
	F	11	0	3	2	0	0	1	2	0	1	0	1	0	0	0	0	1	0	0	0	0	0	0

SITE / Age-Group		Under 1	1+	5+	10+	15+	20+	25+	30+	35+	40+	45+	50+	55+	60+	65+	70+	75+	80+	85+	90+	95+	Unknown	
Meninges	T	11	0	0	0	0	0	0	1	0	0	4	0	1	1	1	2	0	0	1	0	0	0	0
	M	4	0	0	0	0	0	0	0	0	0	1	0	0	1	1	1	0	0	0	0	0	0	0
	F	7	0	0	0	0	0	0	1	0	0	3	0	1	0	0	1	0	0	1	0	0	0	0
Brain	T	62	0	8	5	8	4	3	3	3	4	4	5	4	2	6	2	1	0	0	0	0	0	0
	M	41	0	6	3	5	4	1	2	2	3	2	4	1	1	5	1	1	0	0	0	0	0	0
	F	21	0	2	2	3	0	2	1	1	1	2	1	3	1	1	1	0	0	0	0	0	0	0
Thyroid	T	190	0	0	0	1	1	10	14	16	16	17	32	25	19	13	10	11	5	0	0	0	0	0
	M	35	0	0	0	1	1	2	1	2	1	1	6	3	4	2	6	4	1	0	0	0	0	0
	F	155	0	0	0	0	0	8	13	14	15	16	26	22	15	11	4	7	4	0	0	0	0	0
Adrenal gland	T	6	0	0	1	0	0	1	0	0	0	1	0	0	2	0	0	1	0	0	0	0	0	0
	M	5	0	0	1	0	0	1	0	0	0	1	0	0	1	0	0	1	0	0	0	0	0	0
	F	1	0	0	0	0	0	0	0	0	0	0	0	0	1	0	0	0	0	0	0	0	0	0
Other endocrine gland	T	12	0	1	0	1	0	0	1	0	2	1	1	2	0	0	0	3	0	0	0	0	0	0
	M	6	0	1	0	1	0	0	1	0	0	0	1	0	0	0	0	2	0	0	0	0	0	0
	F	6	0	0	0	0	0	0	0	0	2	1	0	2	0	0	0	1	0	0	0	0	0	0
Unspecified site	T	275	0	2	2	2	2	3	7	8	12	22	21	33	34	34	31	33	16	9	3	0	1	0
	M	149	0	1	0	1	2	1	3	4	8	15	10	13	22	18	11	24	9	5	2	0	0	0
	F	126	0	1	2	1	0	2	4	4	4	7	11	20	12	16	20	9	7	4	1	0	1	0
Hodgkin's disease	T	23	0	0	0	1	2	2	5	2	1	3	4	0	0	0	0	3	0	0	0	0	0	0
	M	8	0	0	0	1	1	2	0	0	0	2	2	0	0	0	0	0	0	0	0	0	0	0
	F	15	0	0	0	0	1	0	5	2	1	1	2	0	0	0	0	3	0	0	0	0	0	0
Malignant lymphoma	T	304	0	4	4	9	9	9	14	22	19	23	31	24	23	28	31	17	20	12	3	2	0	0
	M	151	0	1	3	6	6	4	5	14	11	11	17	11	11	11	15	9	9	6	1	0	0	0
	F	153	0	3	1	3	3	5	9	8	8	12	14	13	12	17	16	8	11	6	2	2	0	0
Multiple myeloma	T	44	0	0	0	0	1	0	0	1	1	3	3	4	3	10	8	1	7	1	1	0	0	0
	M	18	0	0	0	0	1	0	0	1	0	2	3	2	0	4	2	1	2	0	0	0	0	0
	F	26	0	0	0	0	0	0	0	0	1	1	0	2	3	6	6	0	5	1	1	0	0	0
Acute lymphoblastic leukaemia	T	89	0	6	11	14	18	6	8	2	3	4	2	2	2	3	2	3	1	1	0	0	0	1
	M	49	0	2	9	8	10	2	6	1	2	3	1	1	0	0	1	1	0	1	0	0	0	1
	F	40	0	4	2	6	8	4	2	1	1	1	1	1	2	3	1	2	1	0	0	0	0	0
Chronic lymphocytic leukaemia	T	26	0	0	0	0	0	1	0	1	0	2	2	2	5	2	5	5	1	0	0	0	0	0
	M	14	0	0	0	0	0	0	0	1	0	2	1	1	2	1	3	3	0	0	0	0	0	0
	F	12	0	0	0	0	0	1	0	0	0	0	0	1	1	3	1	2	2	1	0	0	0	0
Lymphoid leukaemia, unspecified	T	3	0	0	0	0	0	1	1	0	0	1	0	0	0	0	0	0	0	0	0	0	0	0
	M	0	0	0	0	0	0	0	0	0	0	0	0	0	0	0	0	0	0	0	0	0	0	0
	F	3	0	0	0	0	0	1	1	0	0	1	0	0	0	0	0	0	0	0	0	0	0	0

SITE / Age-Group		Under 1	1+	5+	10+	15+	20+	25+	30+	35+	40+	45+	50+	55+	60+	65+	70+	75+	80+	85+	90+	95+	Unknown	
Acute myeloid leukaemia	T	60	0	0	1	3	0	3	5	9	4	2	3	6	4	5	5	2	2	0	0	0	1	
	M	32	0	0	0	2	0	2	2	5	3	1	3	3	1	2	1	3	2	1	0	0	0	1
	F	28	0	0	1	1	0	1	3	4	1	1	0	3	3	3	4	2	0	1	0	0	0	0
Chronic myeloid leukaemia	T	49	0	2	3	1	0	2	1	7	4	7	7	3	2	5	0	2	2	0	1	0	0	0
	M	23	0	1	2	1	0	1	0	3	1	2	2	3	2	1	0	2	2	0	0	0	0	0
	F	26	0	1	1	0	0	1	1	4	3	5	5	0	0	4	0	0	0	0	1	0	0	0
Myeloid leukaemia, unspecified	T	21	0	1	0	0	0	1	2	3	1	2	1	1	1	5	3	0	0	0	0	0	0	0
	M	9	0	1	0	0	0	0	0	2	0	0	0	1	1	3	1	0	0	0	0	0	0	0
	F	12	0	0	0	0	0	1	2	1	1	2	1	0	0	2	2	0	0	0	0	0	0	0
Acute monocytic leukaemia	T	6	0	0	0	0	0	1	0	1	2	1	0	0	0	0	0	1	0	0	0	0	0	0
	M	5	0	0	0	0	0	1	0	1	1	1	0	0	0	0	0	1	0	0	0	0	0	0
	F	1	0	0	0	0	0	0	0	0	1	0	0	0	0	0	0	0	0	0	0	0	0	0
Leukaemia of unspecified type	T	40	0	3	2	3	1	3	2	1	2	2	3	2	0	2	9	1	3	0	0	1	0	0
	M	19	0	1	0	3	1	2	0	0	0	1	2	2	0	0	6	1	0	0	0	0	0	0
	F	21	0	2	2	0	0	1	2	1	2	1	1	0	0	2	3	0	3	0	0	1	0	0

TABLE IX

THE COMMON SITE OF MALIGNANCY BY PERCENTAGE

Site	PERCENTAGE				
	2001	2002	2003	2004	2005
Total Cases	3981	4293	4663	4940	5720
Breast	11.83	11.95	7.72	14.45	13.67
Cervix	14.07	13.35	13.25	10.22	8.37
Liver	3.82	5.78	4.59	6.05	7.94
Colon-rectum	7.56	11.95	7.72	7.51	7.81
Lung	6.86	7.34	6.30	7.57	7.41
Lymphoma	5.10	6.76	6.46	5.55	5.72
Leukaemia	6.38	5.31	6.30	5.69	5.03
Prostate	3.67	3.82	4.59	4.68	5.00
Thyroid	1.61	1.89	2.19	2.57	3.32
Oral cavity	3.89	3.42	3.71	3.12	3.06

TABLE IX.1

THE COMMON SITE OF MALIGNANCY BY PERCENT 2001 - 2005

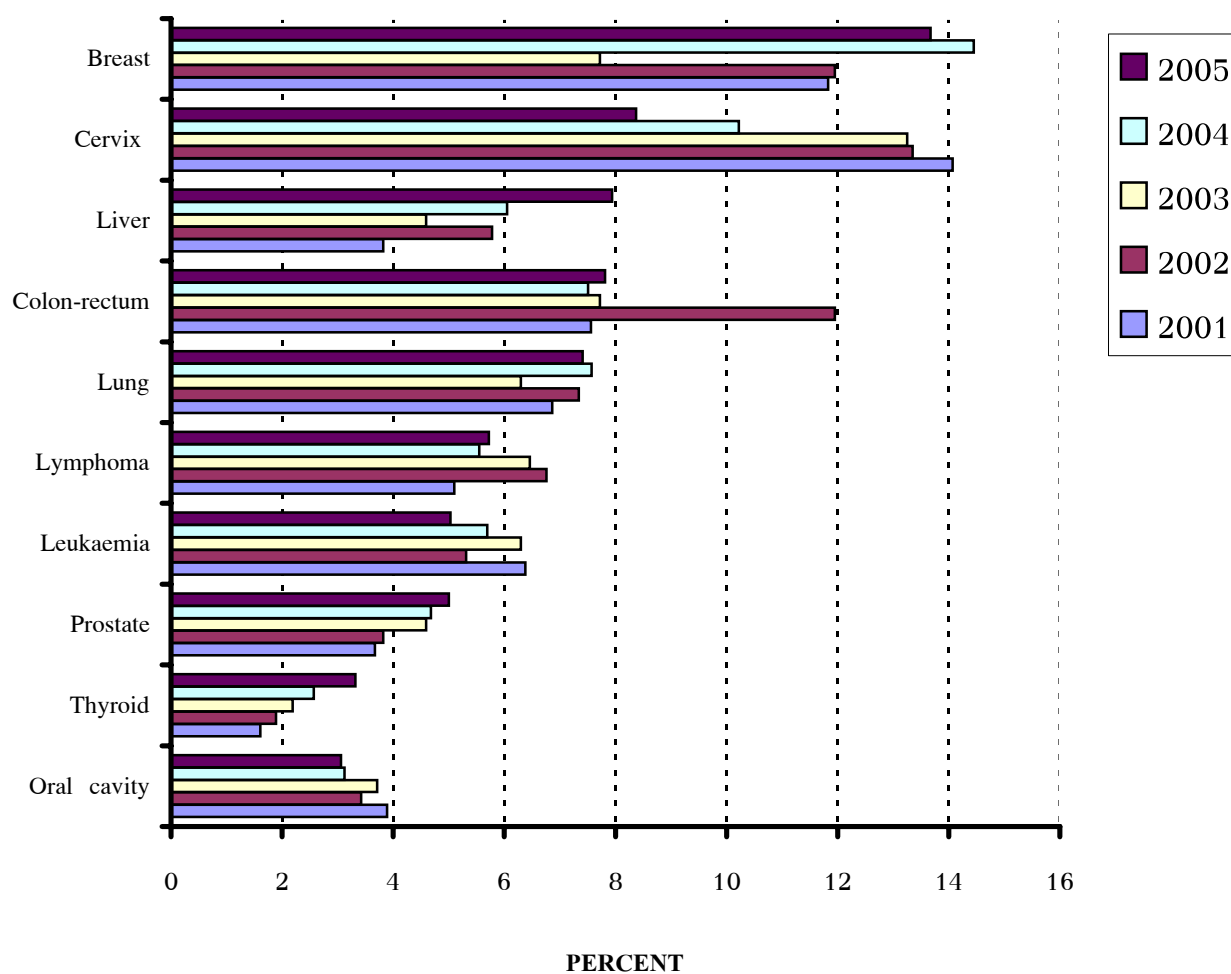


TABLE X
THE COMMON MALIGNANCY IN MALE

Site	Male	%
All Sites	2606	100.00
Liver	324	12.43
Prostate	286	10.97
Lung	278	10.67
Colon-Rectum	243	9.32
Lymphoma	159	6.10
Leukaemia	147	5.64
Bladder	117	4.49
Oral cavity	106	4.07
Nasopharynx	95	3.65
Oesophagus	58	2.23

TABLE X.I
THE COMMON MALIGNANCY IN MALE

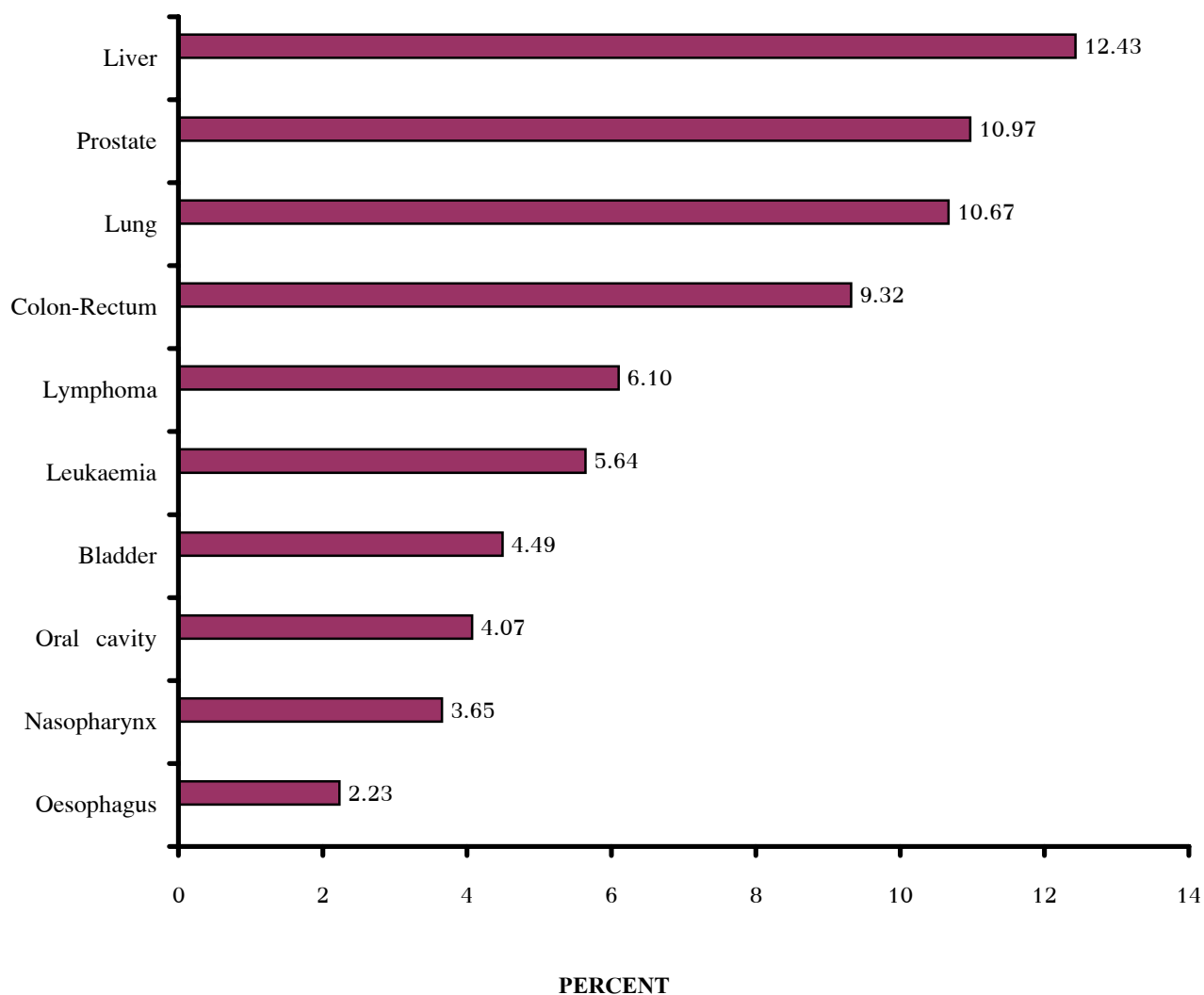


TABLE XI
THE COMMON MALIGNANCY IN FEMALE

Site	Female	%
All Sites	3114	100.00
Breast	767	24.63
Cervix	479	15.38
Colon-rectum	204	6.55
Lymphoma	168	5.39
Thyroid	155	4.98
Lung	146	4.69
Leukaemia	141	4.53
Liver	130	4.17
Endometrium	117	3.76
Ovary	112	3.60

TABLE XI.I
THE COMM MALIGNANCY IN FEMALE

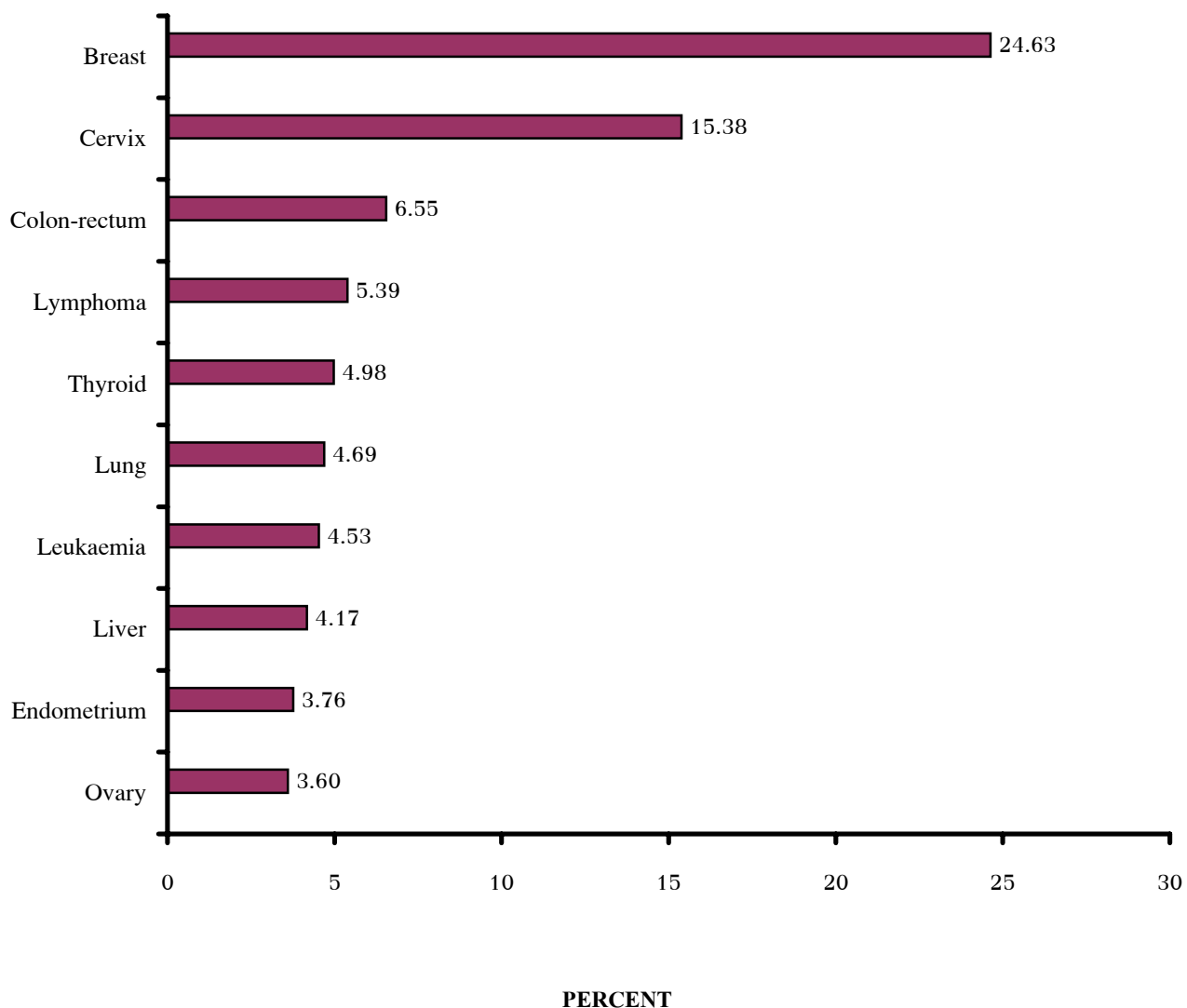


TABLE XII
NUMBER OF CASES OF MALIGNANCY BY PROVINCE

Province	Male	Female	Total
All Province	5720	2606	3114
Amnartjarearn	7	4	11
Angtong	11	13	24
Ayuthaya	45	50	95
Bangkok	957	1199	2156
Buriram	21	28	49
Chachoengsao	11	19	30
Chainat	22	13	35
Chantaburi	11	13	24
Chayaphum	10	14	24
Chiengmai	7	8	15
Chiengrai	12	7	19
Chonburi	26	29	55
Chumphon	44	44	88
Kalasin	8	13	21
Kamphaengphet	15	14	29
Kanchanaburi	52	62	114
Khonkaen	7	5	12
Korat	48	42	90
Krabi	5	2	7
Lampang	10	12	22
Loei	3	5	8
Lopburi	17	20	37
Lumphun	2	0	2
Maehongsorn	1	0	1
Mahasarakham	5	11	16
Mukdaharn	5	1	6
Nakonsithamaraj	41	35	76
Nakornnayok	7	8	15
Nakomphanom	10	10	20
Nakomphatom	135	179	314
Nakornsawan	33	27	60
Nan	5	7	12
Narathiwat	2	3	5
Nongbua	2	1	3
Nongkhai	10	4	14
Nonthaburi	127	197	324
Pang-Nga	5	8	13
Pathani	2	1	3
Pathumthani	34	43	77
Payao	5	4	9
Phattalung	4	2	6
Phetburi	36	52	88
Phetchabun	24	23	47
Phrae	7	7	14

Province	Male	Female	Total
All Province	5720	2606	3114
Phuket	8	13	21
Pichit	16	19	35
Pisanulok	8	23	31
Prachinburi	13	5	18
Prachuabkirikhan	45	68	113
Rajburi	112	158	270
Ranong	8	3	11
Rayong	19	18	37
Roi-Et	21	25	46
Sakolnakhorn	11	11	22
Samutprakran	75	81	156
Samutsakhorn	75	89	164
Samutsongkram	24	26	50
Saraburi	17	23	40
Satun	1	1	2
Singburi	17	13	30
Songkhla	9	9	18
Srakaew	8	11	19
Srisaket	16	24	40
Sukhothai	10	11	21
Suphanburi	103	114	217
Surajthani	36	24	60
Surin	21	22	43
Tak	4	9	13
Trang	6	6	12
Trat	6	9	15
Ubon	16	18	34
Udonnathani	9	8	17
Uthaitani	11	5	16
Utharadit	2	6	8
Yala	5	3	8
Yasothon	5	8	13

Not Mention Changvat 29 Records

TABLE XIII**OCCUPATION**

Occupation	North	N-East	Central	South	Total
Agriculturalist	1	3	8	0	12
Fisherman	0	0	3	1	4
Housewife	75	118	1613	90	1896
Business,Trade	29	38	440	20	527
Government official	33	73	648	67	821
Plantation,Farmer	27	143	287	62	519
Clergyman,Priest	2	2	31	1	36
Employee,Labour	48	106	1048	62	1264
Unemploy	9	23	143	13	188
Not record	0	0	453	0	453
Total	224	506	4674	316	5720

TABLE XIV**MALIGNANT LYMPHOMA BY SITE**

Site	Total	Male	Female
All Sites	364	181	183
Tongue	1	1	0
Palate	2	1	1
Tonsil	3	1	2
Oropharynx	1	0	1
Nasopharynx	3	2	1
Hypopharynx	1	1	0
Stomach	7	4	3
Small bowel	2	1	1
Large bowel	1	1	0
Accessory sinus	4	4	0
Lung	3	1	2
Breast	2	0	2
Cervix	1	0	1
Testis	4	4	0
Eye and adnexa	2	1	1
Brain	2	1	1
Thyroid	1	1	0
Lymph node	324	157	167

TEBLE XV
MALIGNANT LYMPHOMA BY AGE

Age	Total		Male		Female	
	n	%	n	%	n	%
All Age	364	100.00	181	100.00	183	100.00
Unkown	0	0.00	0	0.00	0	0.00
1+	2	0.55	0	0.00	2	1.09
5+	5	1.37	4	2.21	1	0.55
10+	10	2.75	7	3.87	3	1.64
15+	13	3.57	8	4.42	5	2.73
20+	11	3.02	6	3.31	5	2.73
25+	19	5.22	5	2.76	14	7.65
30+	26	7.14	15	8.29	11	6.01
35+	22	6.04	12	6.63	10	5.46
40+	28	7.69	14	7.73	14	7.65
45+	40	10.99	20	11.05	20	10.93
50+	30	8.24	13	7.18	17	9.29
55+	24	6.59	12	6.63	12	6.56
60+	29	7.97	12	6.63	17	9.29
65+	35	9.62	18	9.94	17	9.29
70+	27	7.42	14	7.73	13	7.10
75+	23	6.32	11	6.08	12	6.56
80+	15	4.12	9	4.97	6	3.28
85+	3	0.82	1	0.55	2	1.09
90+	2	0.55	0	0.00	2	1.09
95+	0	0.00	0	0.00	0	0.00

TABLE XV
MALIGNANT LYMPHOMA BY AGE

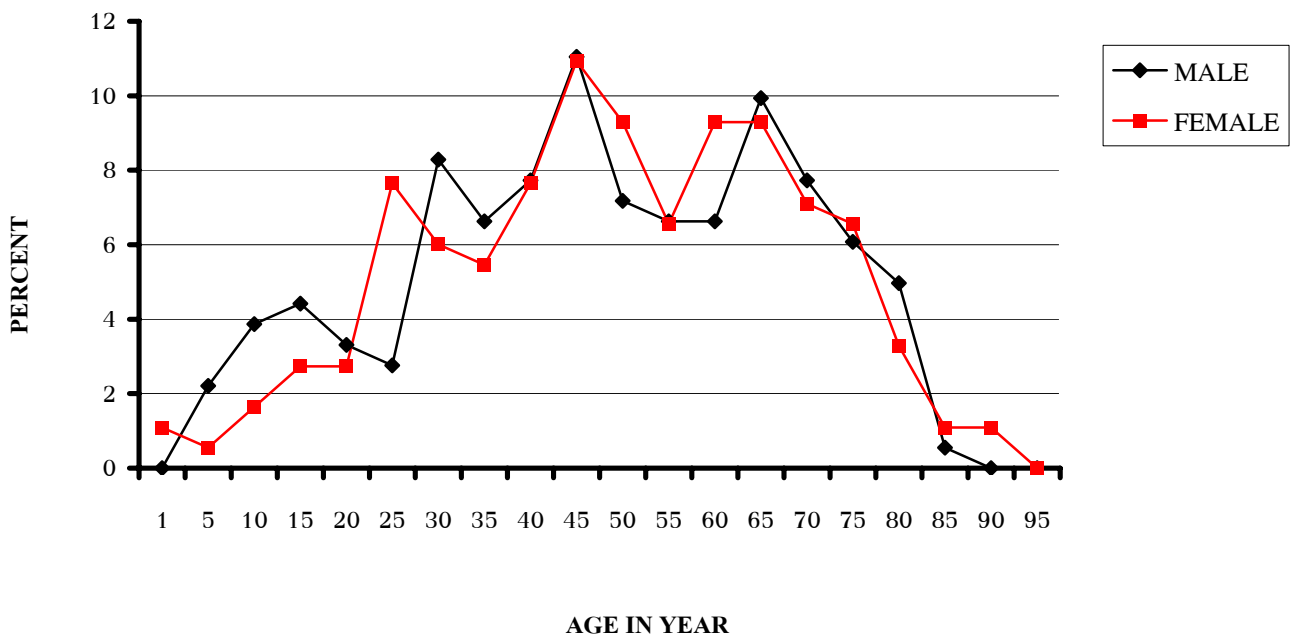


TABLE XVI

CLINICAL STAGE OF CERVIX

Stage	MALE	%	Female	%	Total	%
Stage not record	0	0.00	229	47.81	229	47.81
Stage 1	0	0.00	3	0.63	3	0.63
Stage 1A	0	0.00	7	1.46	7	1.46
Stage 1B	0	0.00	44	9.19	44	9.19
Stage 1D	0	0.00	1	0.21	1	0.21
Stage 2	0	0.00	4	0.84	4	0.84
Stage 2A	0	0.00	16	3.34	16	3.34
Stage 2B	0	0.00	52	10.86	52	10.86
Stage 3	0	0.00	6	1.25	6	1.25
Stage 3A	0	0.00	3	0.63	3	0.63
Stage 3B	0	0.00	95	19.83	95	19.83
Stage 4	0	0.00	9	1.88	9	1.88
Stage 4A	0	0.00	7	1.46	7	1.46
Stage 4B	0	0.00	3	0.63	3	0.63
TOTAL	0	0.00	479	100.00	479	100.00

TABLE XVII

CLINICAL STAGE OF CERVIX

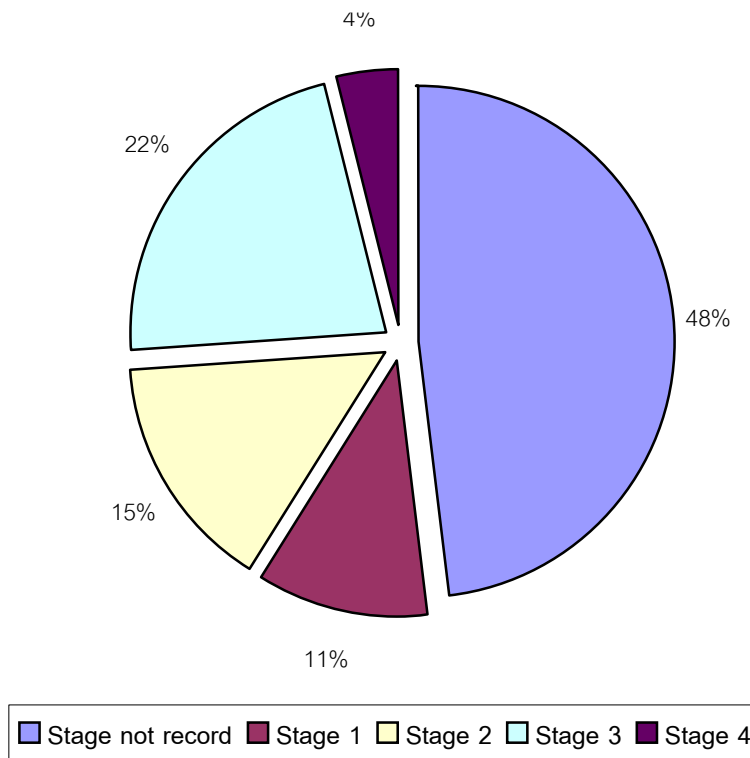


TABLE XVII

CLINICAL STAGE OF OVARY

Stage	MALE	%	Female	%	Total	%
Stage not record	0	0.00	91	81.25	91	81.25
Stage 1	0	0.00	1	0.89	1	0.89
Stage 1C	0	0.00	4	3.57	4	3.57
Stage 2	0	0.00	1	0.89	1	0.89
Stage 3	0	0.00	6	5.36	6	5.36
Stage 3B	0	0.00	1	0.89	1	0.89
Stage 3C	0	0.00	3	2.68	3	2.68
Stage 4	0	0.00	5	4.46	5	4.46
TOTAL	0	0.00	112	100.00	112	100.00

TABLE XVII.I

CLINICAL STAGE OF OVARY

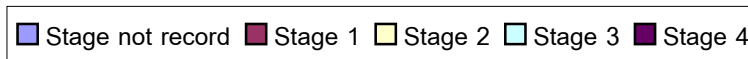
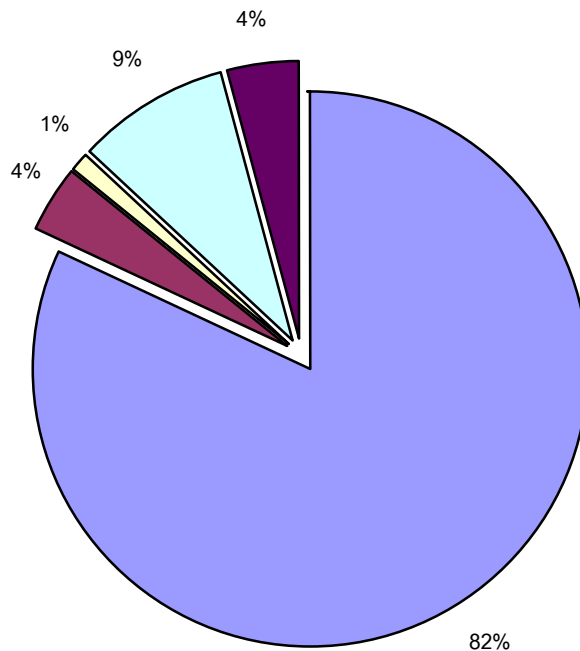


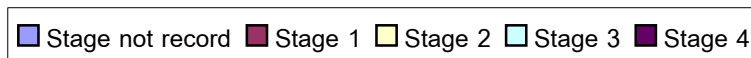
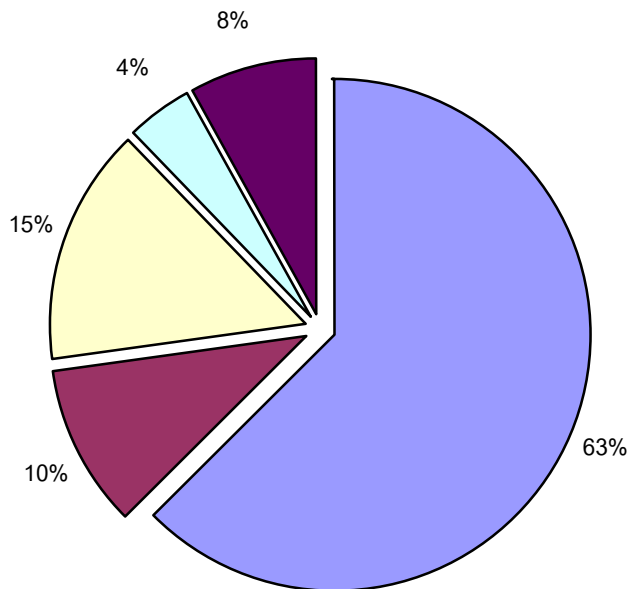
TABLE XVIII

CLINICAL STAGE OF BREAST

Stage	MALE	%	Female	%	Total	%
Stage not record	11	73.33	476	62.06	487	62.28
Stage 1	0	0.00	82	10.69	82	10.49
Stage 2	2	13.33	114	14.86	116	14.83
Stage 2A	0	0.00	1	0.13	1	0.13
Stage 2B	0	0.00	2	0.26	2	0.26
Stage 3	2	13.33	28	3.65	30	3.84
Stage 3A	0	0.00	1	0.13	1	0.13
Stage 3B	0	0.00	3	0.39	3	0.38
Stage 4	0	0.00	60	7.82	60	7.67
TOTAL	15	100.00	767	100.00	782	100.00

TABLE XVIII.I

CLINICAL STAGE OF BREAST



CANCER BY REGION

2005

