

TUMOUR REGISTRY

SIRIRAJ CANCER CENTER



STATISTICAL REPORT

2006

FACULTY OF MEDICINE SIRIRAJ HOSPITAL

MAHIDOL UNIVERSITY

ISSN 00857-3840

TUMOUR REGISTRY

SIRIRAJ CANCER CENTER



STATISTICAL REPORT

2006

FACULTY OF MEDICINE SIRIRAJ HOSPITAL

MAHIDOL UNIVERSITY

ISSN 00857-3840

THE SIRIRAJ CANCER CENTER

Tumour registry 2006

Annual report 2006

Editor

Wilaiporn Bhothisuwan

Circulation

Kulwantip Neovakul

Publish by

Siriraj Cancer Center

Siriraj Hospital

2 Pran-nok Road

Bangkok 10700

THAILAND

Tel: 66 0 2412 1360

Fax: 66 0 2412 9169

Table of contents

Number of patients	1
Diagnosis	1
Malignancy by age and sex	1
Primary site	3
Pathology according to site	7
The ten leading sites	18
Malignant neoplasm in childhood	19
Primary sites as to age and sex	20
Common site of malignancy	27
Common site in male	28
Common site in female	29
Malignancy by province	30
Malignancy by occupation	31
Malignant lymphoma by site	32
Malignant lymphoma by age	33
Clinical stage of carcinoma of cervix	34
Clinical stage of carcinoma of ovary	35
Clinical stage of carcinoma of breast	36
Cancer by region	37

THE COMMITTEE OF TUMOUR REGISTRY

WILAIORN BHOTHISUWAN	M.D.	CHAIRMAN
NARONG LERT-AKAYAMANEE	M.D.	VICE CHAIRMAN
VUTISIRI VEERASAN	M.D.	VICE CHAIRMAN
PITTAYAPOOM PATTARANUTOPORN	M.D.	
TEERAWAT KULTHANAN	M.D.	
THRATHIP KOLATAT	M.D.	
APICHARY SINGCALAYANIJA	M.D.	
PUAN SUTHIPINITTHARM	M.D.	
TUMTIP SANGRUCHI	M.D.	
SUPHACHAI RATANAMANEECHAT	M.D.	
SUPAKORN ROJANANIN	M.D.	
CHANCHAI VANTANASIRI	M.D.	
CHOAKCHAI METHEETRAIRUT	M.D.	
UDOM KACHINTORN	M.D.	
NOPPHOL PAUSAWASDI	M.D.	
SUCHAI SOONTRAPA	M.D.	
SURAPOL ISSARAGRISIL	M.D.	
CHIRAYU AUEWARAKUL	M.D., Ph.D.	
CHEERASOOK CHONGKOLWATANA	M.D.	
TEERAWIT PHANCHAIPETCH	M.D.	
PORNCHAI O-CHAREONRAT	M.D.	
MONGKOL BENJAPIBAL	M.D.	
VACHARIN RATANAMART	M.D.	
SATHAPORN MANATSATHIS	M.D.	
SORANIT SILTHARM	M.D.	
SUNAI LEEWANSANGTONG	M.D.	
ADUNE RATANAWICHITRASIN	M.D.	
APICHAT ASAVAMONGKOLKUL	M.D.	
GAVIVAN VEERAKUL	M.D.	
KANCHANA AMORNPICHETKUL	M.D.	
THANYADEJ NIMMANWUDIPONG	M.D.	
MONGKOL LAOHAPANSANG	M.D.	
VICHIEEN SRIMUNINNIMIT	M.D.	
WIROON BOONNUCH	M.D.	
YONGYUT SIRIVATANAUKSORN	M.D. Ph.D.	
NANTHASAK TISAVIPAT	M.D.	
JONGJIT KANAGUL	R.N.	
SOMSRI RATANAWICHITRASIN	M.D.	SECRETARY
KULWANTIP NEOVAKUL		ASSISTANT SECRETARY

THE SUBCOMMITTEE OF TUMOUR REGISTRY

WILAIORN BHOTHISUWAN	PORNCHAI O-CHAREONRAT
NARONG LERT-AKAYAMANEE	CHAIYOD THIRAPAKAWONG
VUTISIRI VEERASAN	SATHAPORN MANATSATHIS
PITTAYAPOOM PATTARANUTOPORN	GAVIVAN VEERAKUL
SORANIT SILTHARM	VICHIEEN SRIMUNINNIMIT
TUMTIP SANGRUCHI	SANAN VISUTHISAKCHAI
SUPAKORN ROJANANIN	KANCHANA AMORNPICHETKUL
APICHARY SINGCALAYANIJA	SOMSRI RATANAWICHITRASIN
CHOAKCHAI METHEETRAIRUT	VISOOT VOOTIPRUX

OFFICE STAFF

KULWANTIP NEOVAKUL	MATTANA MOUANGNGAM
PRANEE MAHAMADSORLAE	UMAPORN EAUGUL-ATICHAT
NIYOM CHUMROJ	KANDA PUTTAINSORN
THANIT HIRANYAKUPT	

Introduction

The cancer incidence is increased significantly in these recent years (table IX) and it becomes the most common cause of death in Thailand, followed by accident and heart problems. Statistics from Siriraj Hospital this year, there are 151,636 new OPD cases, among that, we find 6,377 new cancers, which is 4.20 % of the new OPD cases. It is very interesting to learn that breast cancer is the most common cancer in our hospital for this passing 3 years (table IX.I), becoming around one fourth of all women's cancers. Anyhow, men may have breast cancer, as well, though in very little percentage. Early detection or screening for breast cancer is essential to get the best outcome of the treatment

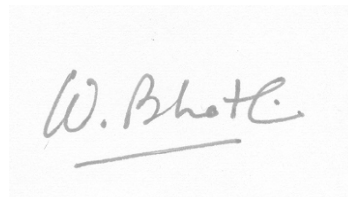
Uterine cervical cancer used to be the most common female cancer in our hospital, until this passing 3 years (table IX.I). However, the number of cases is not decreased, but more women have breast cancers. With the recent knowledge of the causes of this cervical cancer and the effective prevention, the incidence should be lower in near future.

Surprisingly, this year, the prostate cancer is the most common male cancer in our hospital, slightly more than the liver cancer. Awareness of prostate cancer screening might take part in this statistics.

The overall incidence of cancers indicates the significances of liver, lung and colorectal cancers in both sexes.

Public education of cancer prevention, how to avoid risk factors of cancers as well as screening for cancers in the cancer-risky persons should be provided. Is it the time that cancer screening programme should be launched as a national campaign?

We would like to acknowledge the supports from The Medical Information Technology Department, Medical Record Department, Departments of Pathology, Radiology, Obstetrics and Gynecology, Surgery, Medicine, Orthopedics, Oto-Rhino-Laryngology, Ophthalmology and Pediatrics. Without their kind providing the information, this Cancer Report 2006 is not possible.

A handwritten signature in black ink, appearing to read "W. Bhothi", with a horizontal line underneath it.

Associate Professor Wilaiporn Bhothisuwan, MD

Chairman: Siriraj Cancer Center

Faculty of Medicine Siriraj Hospital

Mahidol University

2006

TABLE I

NUMBER OF PATIENT

Type of patient	No.of Cases
Total No. of Out Patients	2,311,994
Total No. of New Patients	151,636
Total No. of New Patients with Malignancy	6,377

The Cancer case are 4.20% of all new patients

TABLE II

DIAGNOSIS

Diagnosed by	Number	Percentage
Histological proved	6,030	94.56
Clinical & X-ray	347	5.44
Total	6,377	100.00

TABLE III

NUMBER OF MALIGNANT NEOPLASM BY AGE AND SEX

AGE-group	No. of Cases					
	MALE		FEMALE		TOTAL	
	No	%	No	%	No	%
ALL AGE	2,948	100.00	3,429	100.00	6,377	100.00
NOT RECORD	4	0.14	4	0.12	8	0.13
1+	30	1.02	22	0.64	52	0.82
5+	22	0.75	15	0.44	37	0.58
10+	35	1.19	25	0.73	60	0.94
15+	31	1.05	20	0.58	51	0.80
20+	26	0.88	54	1.57	80	1.25
25+	40	1.36	71	2.07	111	1.74
30+	64	2.17	142	4.14	206	3.23
35+	92	3.12	202	5.89	294	4.61
40+	147	4.99	333	9.71	480	7.53
45+	212	7.19	476	13.88	688	10.79
50+	304	10.31	455	13.27	759	11.90
55+	362	12.28	375	10.94	737	11.56
60+	380	12.89	331	9.65	711	11.15
65+	388	13.16	299	8.72	687	10.77
70+	369	12.52	254	7.41	623	9.77
75+	244	8.28	176	5.13	420	6.59
80+	142	4.82	104	3.03	246	3.86
85+	38	1.29	52	1.52	90	1.41
90+	16	0.54	16	0.47	32	0.50
95+	2	0.07	3	0.09	5	0.08

TABLE III.I

NUMBER OF MALIGNANT NEOPLASM BY AGE

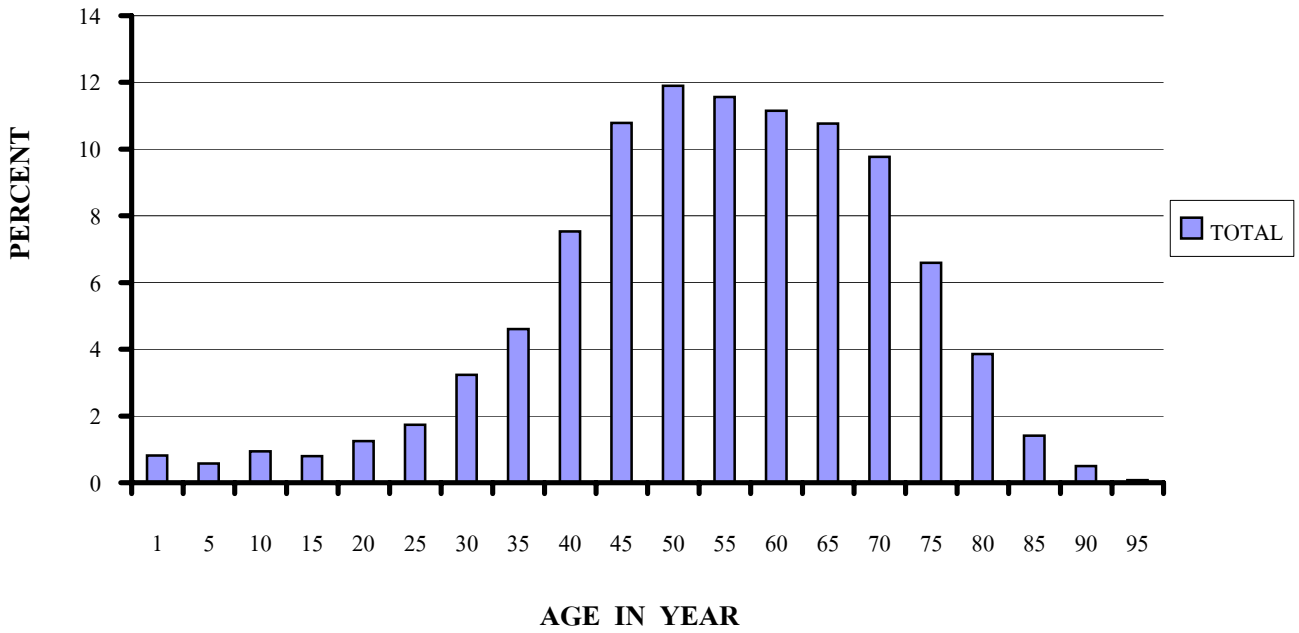


TABLE III.II

NUMBER OF MALIGNANT NEOPLASM BY AGE

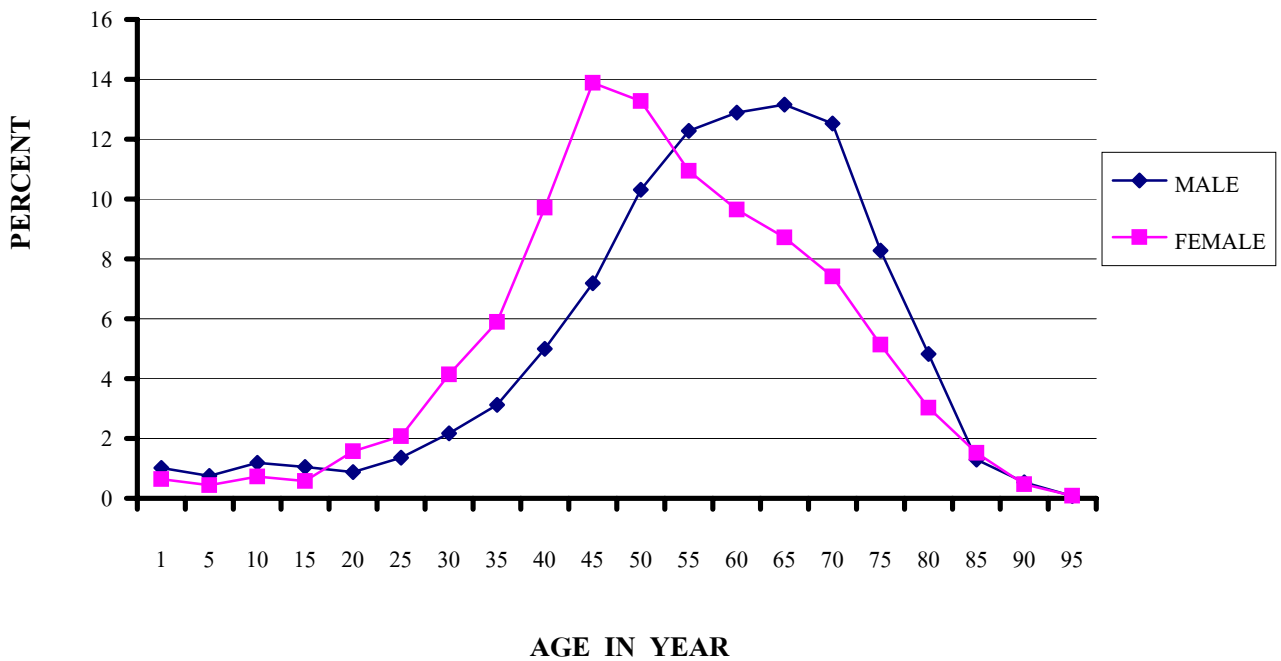


TABLE IV**PRIMARY SITE**

CODE	SITE	No. of Cases			
		M	F	T	%
	GRAND TOTAL	2948	3429	6377	100.00
C00.0-c14.0	Malignant Neoplasm of Lip, Oral Cavity and Pharynx	285	140	425	6.66
C00.0	Upper lip	1	2	3	0.05
C00.1	Lower lip	1	14	15	0.24
C01	Base of tongue	9	5	14	0.22
C02.9	Tongue unspecified	32	19	51	0.80
C03.0	Gum upper	0	1	1	0.02
C03.1	Gum lower	2	3	5	0.08
C03.9	Gum unspecified	5	3	8	0.13
C04.9	Floor of mouth unspecified	17	3	20	0.31
C05.0	Hard palate	2	0	2	0.03
C05.1	Soft palate	10	3	13	0.20
C05.9	Palate unspecified	3	1	4	0.06
C06.0	Cheek mucosa	4	24	28	0.44
C06.2	Retromolar area	1	0	1	0.02
C07	Parotid gland	13	9	22	0.34
C08.9	Salivary gland unspecified	6	3	9	0.14
C09.9	Tonsil unspecified	18	11	29	0.45
C10.1	Epiglottis anterior surface	1	0	1	0.02
C10.9	Oropharynx unspecified	4	0	4	0.06
C11.9	Nasopharynx unspecified	118	34	152	2.38
C12	Pyramidal sinus	24	3	27	0.42
C13.1	Aryepiglottis outer surface	3	1	4	0.06
C13.9	Hypopharynx unspecified	7	1	8	0.13
C14.0	Pharynx unspecified	2	0	2	0.03
C14.8	Oralcavity unspecified	2	0	2	0.03
C15-C26	Malignant Neoplasm of Digestive Organs	881	546	1427	22.38
C15.0	Esophagus cervical	2	0	2	0.03
C15.2	Esophagus abdomen	1	0	1	0.02
C15.3	Esophagus upper 1/3	1	0	1	0.02
C15.4	Esophagus middle 1/3	3	1	4	0.06
C15.5	Esophagus lower 1/3	3	1	4	0.06
C15.9	Esophagus unspecified	60	11	71	1.11
C16.0	Stomach cardia	2	2	4	0.06
C16.4	Stomach pylorus	1	1	2	0.03
C16.9	Stomach unspecified	54	47	101	1.58
C17.0	Duodenum	8	10	18	0.28
C17.1	Jejunum	2	0	2	0.03
C17.2	Ileum	5	2	7	0.11
C18.0	Caecum	9	13	22	0.34
C18.1	Appendix	0	2	2	0.03
C18.2	Colon ascending	13	6	19	0.30
C18.3	Colon hepatic flexure	1	0	1	0.02
C18.4	Colon transvers	8	11	19	0.30
C18.5	Colon splenic flexure	0	1	1	0.02
C18.6	Colon descending	8	5	13	0.20
C18.7	Sigmoid colon	51	47	98	1.54

CODE	SITE	M	F	T	%
	GRAND TOTAL	2948	3429	6377	100.00
C18.9	Colon unspecified	52	62	114	1.79
C19	Rectosigmoid	18	12	30	0.47
C20	Rectum	80	87	167	2.62
C21.0	Anus unspecified	0	3	3	0.05
C21..1	Anal canal	4	3	7	0.11
C22.0	Liver cell ca	374	117	491	7.70
C22.1	Cholangio carcinoma	70	42	112	1.76
C22.9	Ca liver unspecified	9	10	19	0.30
C23	Gall bladder	11	10	21	0.33
C24.0	Bile duct	1	2	3	0.05
C24.1	Ampular	6	9	15	0.24
C25.0	Pancreas head	14	16	30	0.47
C25.3	Pancreas duct	0	1	1	0.02
C25.9	Pancreas unspecified	10	12	22	0.34
C30-C39	Malignant Neoplasm of Respiratory and Intrathoracic Organ	461	206	667	10.46
C30.0	Nasal cavity	14	11	25	0.39
C31.0	Maxillary sinus	8	4	12	0.19
C31.1	Ethmoid sinus	1	0	1	0.02
C32.0	Glottis	46	2	48	0.75
C32.1	Supraglottis	22	1	23	0.36
C32.2	Subglottis	1	0	1	0.02
C32.8	Larynx overlap	9	0	9	0.14
C32.9	Larynx unpecified	19	0	19	0.30
C33	Trachea	4	3	7	0.11
C34.1	Lung upper lobe	48	30	78	1.22
C34.2	Lung midle lobe	3	3	6	0.09
C34.3	Lung lower lobe	22	13	35	0.55
C34.8	Lung overlap	1	1	2	0.03
C34.9	Lung unspecified	259	133	392	6.15
C37	Thymus	0	4	4	0.06
C38.1	Anterior mediastinum	2	1	3	0.05
C38.3	Mediastinum unspecified	2	0	2	0.03
C40-C50	Malignant Neoplasm of Bone , Cartilage ,Skin,Soft tissue , Breast	153	979	1132	17.75
C40.0	Long bone upper limb	1	3	4	0.06
C40.2	Long bone lower limb	15	6	21	0.33
C40.3	Short Bone lower limb	1	0	1	0.02
C40.9	Bone, unspecified	13	8	21	0.33
C41.2	Vertibral Column	0	1	1	0.02
C41.3	Rib ,Sternum ,Clavacle	0	1	1	0.02
C41.4	Pelvic, sacrum, coxix bone	0	1	1	0.02
C41.9	Bone,Cart nuspecified	3	4	7	0.11
C43.2	Melanoma Ear	0	1	1	0.02
C43.3	Melanoma Face	1	0	1	0.02
C43.5	Melanoma Trunk	0	1	1	0.02
C43.6	Melanoma upper limb	0	1	1	0.02
C43.7	Melanoma Lower Limb	7	3	10	0.16
C43.8	Melanoma overlapping Lesion	0	1	1	0.02
C43.9	Melanoma skin, unspecified	5	7	12	0.19
C44.0	Skin, lip	1	1	2	0.03

CODE	SITE	M	F	T	%
	GRAND TOTAL	2948	3429	6377	100.00
C44.1	Skin, eyelid	3	7	10	0.16
C44.2	Skin,external ear	2	5	7	0.11
C44.3	Skin, face	15	24	39	0.61
C44.4	Skin, scalp	5	6	11	0.17
C44.5	Skin of Trunk	2	0	2	0.03
C44.6	Skin, upper limb	1	1	2	0.03
C44.7	Skin, lower limb	1	1	2	0.03
C44.9	Skin, unspecified	32	25	57	0.89
C46.0	Kaposi Sarcoma Skin	0	1	1	0.02
C46.9	Peripheral nerves and autonomic nervous system, unspecified	1	0	1	0.02
C47.9	Autonomic Nervous system	5	4	9	0.14
C48.2	Peritonium unspecified	0	1	1	0.02
C49.2	Soft Tissue Lower limb	1	0	1	0.02
C49.9	Soft tissue, unspecified	36	24	60	0.94
C50.9	Breast, unspecified	2	841	843	13.22
C51-C68	Malignant Neoplasm of Genital and Urinary tract	683	891	1574	24.68
C51.0	Labium Majus	0	1	1	0.02
C51.9	Vulva, unspecified	0	15	15	0.24
C52	vagina	0	19	19	0.30
C53.0	Endocervix	0	12	12	0.19
C53.1	Exocervix	0	16	16	0.25
C53.9	Cervix, unspecified	0	495	495	7.76
C54.1	Endometrium	0	128	128	2.01
C54.9	Corpus, unspecified	0	1	1	0.02
C55	Uterus nuspecified	0	2	2	0.03
C56	Ovary	0	115	115	1.80
C57.0	Follopain tube	0	2	2	0.03
C58	Placenta	0	4	4	0.06
C60.0	Prepuce	1	0	1	0.02
C60.9	Penis, unspecified	16	0	16	0.25
C61	Prostate	472	0	472	7.40
C62.9	Testis, unspecified	3	0	3	0.05
C63.2	Scrotum	2	0	2	0.03
C64	Kidney	35	15	50	0.78
C65	Reanl pelvis	5	10	15	0.24
C66	Ureter	0	1	1	0.02
C67.9	Bladder, unspecified	147	54	201	3.15
C68.0	Urethra	2	1	3	0.05
C69-C75	Malignant Neoplasm of Eye, Brain , Spinal Cord , and Endocrine Gland	117	246	363	5.69
C69.0	Conjunctiva	6	1	7	0.11
C69.2	Retina	10	7	17	0.27
C69.4	Cilliary Body	3	1	4	0.06
C69.5	Lacrimal Gland	1	0	1	0.02
C69.6	Orbit	2	2	4	0.06
C69.8	Eye Overlap	0	1	1	0.02
C69.9	Eye, unspecified	1	2	3	0.05
C70.0	Cerebral Mening	2	3	5	0.08
C70.1	Spinal Meninges	0	1	1	0.02
C70.9	Meninges unspecified	7	17	24	0.38

CODE	SITE	M	F	T	%
	GRAND TOTAL	2948	3429	6377	100.00
C71.1	Frontal Lobe	1	3	4	0.06
C71.2	Temporal Lobe	1	1	2	0.03
C71.3	Parietal Lobe	0	1	1	0.02
C71.6	Cerebellum	0	4	4	0.06
C71.9	Brain, unspecified	46	42	88	1.38
C72.0	Spinal Cord	0	1	1	0.02
C73	Thyroid Gland	28	153	181	2.84
C74.0	Adrenal Cortex	1	1	2	0.03
C74.1	Adrenal Medulla	1	0	1	0.02
C75.1	Pituitary	3	5	8	0.13
C75.3	Pineal Gland	4	0	4	0.06
C76-C80	Malignant Neoplasm of ill - Defined , Secondang and unspecified site	113	146	259	4.06
C77.0	Lymph node of Head and Neck	7	7	14	0.22
C77.9	Lymph node unspecified site	22	33	55	0.86
C78-C79	Metastic Ca	33	45	78	1.22
C80	Unknown primary site	51	61	112	1.76
C81-C96	Malignant Neoplasm of Lymphoid, Haematic and Related Tissue	255	275	530	8.31
C81.9	Hodgkin's disease	15	10	25	0.39
C82.9	Follic Lymphoma unspecified	2	2	4	0.06
C83.0	Non-Hodgkin's Lymphoma Small cell Diffuse	0	1	1	0.02
C83.2	Lymphoma diffuse mixed	4	3	7	0.11
C83.3	Non-Hodgkin's Lymphoma Large cell Diffuse	3	3	6	0.09
C83.4	Immunoblastic Diffuse	3	4	7	0.11
C83.7	Burkitt's tumour	3	1	4	0.06
C84.4	Peripheral T-cell lymphoma	2	4	6	0.09
C84.5	T-Cell Lymphoma unspecified	0	2	2	0.03
C85.0	Lymphosarcoma	0	1	1	0.02
C85.1	B-Cell Lymphoma, unspecified	1	2	3	0.05
C85.9	NHL unspecified types	71	85	156	2.45
C88.9	Malig immunoprolipherative disease	1	0	1	0.02
C90.0	Multiple myeloma	28	37	65	1.02
C90.1	Plasma Cell Leukaemia	1	0	1	0.02
C90.2	Plasmacytoma	1	2	3	0.05
C91.0	Acute lymphoblastic leukaemia	49	25	74	1.16
C91.1	Chronic lymphocytic leukaemia	12	12	24	0.38
C92.0	Acute myeloid leukaemia	17	35	52	0.82
C92.1	Chronic myeloid leukaemia	23	23	46	0.72
C92.4	Acute promyelocytic leukaemia	0	2	2	0.03
C92.5	Acute myelomonocytic leukaemia	1	1	2	0.03
C93.0	Acute monocytic leukaemia	2	2	4	0.06
C94.5	Acute myelofibrosis	0	1	1	0.02
C95.9	Leukaemia, unspecified	14	16	30	0.47
C96.0	Letterer-Siwe Disease	1	0	1	0.02
C96.1	Malignant Histiocytosis	1	1	2	0.03

TABLE V
PATHOLOGY ACCORDING TO SITE

CODE	SITE	No. of Cases		
		MALE	FEMALE	TOTAL
	GRAND TOTAL	2948	3429	6377
C00	MALIGNANT NEOPLASM OF LIP	2	16	18
	8000/3 NEOPLASM, MALIGNANT,NOS	1	1	2
	8051/3 VERRUCOUS CARCINOMA	0	2	2
	8070/3 SQUAMOUS CELL CARCINOMA	1	13	14
C01-C02	MALIGNANT NEOPLASM OF TONGUE	41	24	65
	8000/3 NEOPLASM, MALIGNANT,NOS	4	1	5
	8070/3 SQUAMOUS CELL CARCINOMA	36	22	58
	8200/3 ADENOID CYSTIC CARCINOMA	0	1	1
	9675/3 MALIGNANT LYMPHOMA, MIXED SMALL AND LARGE CELL	1	0	1
C03-C06	MALIGNANT NEOPLASM OF GUM, FLOOR OF MOUTH, PALATE AND OTHER UNSPECIFIED PART OF MOUTH	44	38	82
	8000/3 NEOPLASM, MALIGNANT,NOS	2	2	4
	8020/3 CARCINOMA, UNDIFFERENTIATE	1	0	1
	8051/3 VERRUCOUS CARCINOMA	0	1	1
	8070/3 SQUAMOUS CELL CARCINOMA	35	34	69
	8140/3 ADENOCARCINOMA	3	0	3
	8200/3 ADENOID CYSTIC CARCINOMA	1	0	1
	8430/3 MUCOEPIDERMOID CARCINOMA	1	0	1
	8800/3 SARCOMA	0	1	1
	9310/3 AMELOBLASTOMA, MALIGNANT	1	0	1
C07-C08	MALIGNANT NEOPLASM PAROTID AND OTHER MAJOR SALIVARY GLAND	19	12	31
	8000/3 NEOPLASM, MALIGNANT,NOS	1	1	2
	8020/3 CARCINOMA, UNDIFFERENTIATED	0	1	1
	8022/3 PLEOMORPHIC CARCINOMA	1	0	1
	8070/3 SQUAMOUS CELL CARCINOMA	1	2	3
	8072/3 SQUAMAUS CELL CA ,LARGE CELL NON KERATINIZING	1	0	1
	8140/3 ADENOCARCINOMA	3	2	5
	8200/3 ADENOID CYSTIC CARCINOMA	2	3	5
	8430/3 MUCOEPIDERMOID CARCINOMA	5	2	7
	8550/3 ACINIC CELL CARCINOMA	1	1	2
	9590/3 MALIGNANT LYMPHOMA	2	0	2
	9680/3 MALIGNANT LYMPHOMA ,LARGE CELL ,DIFFUSE	1	0	1
	9690/3 MALIGNANT LYMPHOMA , FOLLICULAR	1	0	1
C09	MALIGNANT NEOPLASM OF TONSIL	18	11	29
	8070/3 SQUAMOUS CELL CARCINOMA	15	8	23
	9590/3 MALIGNANT LYMPHOMA	1	3	4
	9680/3 MALIGNANT LYMPHOMA, LARGE CELL, DIFFUSE	1	0	1
	9702/3 PERIPHERAL T-CELL LYMPHOMA	1	0	1
C10	MALIGNANT NEOPLASM OF OROPHARYNX	5	0	5
	8070/3 SQUAMOUS CELL CARCINOMA	5	0	5
C11	MALIGNANT NEOPLASM OF NASOPHARYNX	118	34	152
	8000/3 NEOPLASM, MALIGNANT,NOS	8	4	12
	8010/3 CARCINOMA	1	0	1
	8020/3 CARCINOMA, UNDIFFERENTIATED	50	12	62
	8070/3 SQUAMOUS CELL CARCINOMA	55	13	68
	8200/3 ADENOID CYSTIC CARCINOMA	1	1	2

CODE	SITE	No. of Cases		TOTAL
		MALE	FEMALE	
	GRAND TOTAL	2948	3429	6377
	9590/3 MALIGNANT LYMPHOMA	1	3	4
	9675/3 MALIGNANT LYMPHOMA, MIXED SMALL AND LARGE CELL	1	1	2
	9680/3 MALIGNANT LYMPHOMA, LARGE CELL, DIFFUSE	1	0	1
C12	MALIGNANT NEOPLASM OF PYRIFORM SINUS	24	3	27
	8000/3 NEOPLASM, MALIGNANT,NOS	2	0	2
	8051/3 VERRUCOUS CARCINOMA	1	0	1
	8070/3 SQUAMOUS CELL CARCINOMA	21	3	24
C13	MALIGNANT NEOPLASM OF HYPOPHARYNX	10	2	12
	8070/3 SQUAMOUS CELL CARCINOMA	9	2	11
	8560/3 ADENOSQUAMOUS CARCINOMA	1	0	1
C14	MALIGNANT NEOPLASM OF OTHER AND ILL-DEFINED SITE IN THE LIP, ORAL CAVITY AND PHARYNX	4	0	4
	8070/3 SQUAMOUS CELL CARCINOMA	4	0	4
C15	MALIGNANT NEOPLASM OF OESOPHAGUS	70	13	83
	8000/3 NEOPLASM, MALIGNANT,NOS	18	4	22
	8070/3 SQUAMOUS CELL CARCINOMA	46	6	52
	8140/3 ADENOCARCINOMA	6	3	9
C16	MALIGNANT NEOPLASM OF STOMACH	57	50	107
	8000/3 NEOPLASM, MALIGNANT, NOS	8	1	9
	8020/3 CARCINOMA, UNDIFFERENTIATED	0	1	1
	8070/3 SQUAMOUS CELL CARCINOMA	2	0	2
	8140/3 ADENOCARCINOMA	38	36	74
	8480/3 MUCINOUS ADENOCARCINOMA	0	1	1
	8490/3 SIGNET RING CELL CARCINOMA	2	5	7
	8890/3 LEIOMYOSARCOMA	0	1	1
	8936/3 GASTROINTESTINAL STROMAL SARCOMA	4	4	8
	9590/3 MALIGNANT LYMPHOMA	1	1	2
	9591/3 MALIGNANT LYMPHOMA, NON HODGKIN'S	1	0	1
	9680/3 MALIGNANT LYMPHOMA, LARGE B-CELL, DIFFUSE,NOS	1	0	1
C17	MALIGNANT NEOPLASM SMALL INTESTINE	15	12	27
	8070/3 SQUAMOUS CELL CARCINOMA	1	1	2
	8140/3 ADENOCARCINOMA	10	10	20
	8574/3 ADENOCA WITH NEUROENDOCRINE	1	0	1
	8936/3 GASTROINTESTINAL STROMAL SARCOMA	1	1	2
	9590/3 MALIGNANT LYMPHOMA	2	0	2
C18	MALIGNANT NEOPLASM OF COLON	142	147	289
	8000/3 NEOPLASM, MALIGNANT,NOS	11	14	25
	8140/3 ADENOCARCINOMA	128	129	257
	8240/3 CARCINOID TUMOUR	0	1	1
	8260/3 PAPILLARY ADENOCARCINOMA	0	1	1
	8480/3 MUCINOUS ADENOCARCINOMA	2	2	4
	8490/3 SIGNET RING CELL CARCINOMA	1	0	1
C19	MALIGNANT NEOPLASM OF RETOSIGMOID	18	12	30
	8000/3 NEOPLASM, MALIGNANT,NOS	2	1	3
	8140/3 ADENOCARCINOMA	16	11	27

CODE	SITE	No. of Cases		
		MALE	FEMALE	TOTAL
	GRAND TOTAL	2948	3429	6377
C20	MALIGNANT NEOPLASM OF RECTUM	80	87	167
	8000/3 NEOPLASM, MALIGNANT,NOS	4	3	7
	8041/3 SMALL CELL CARCINOMA	0	2	2
	8070/3 SQUAMOUS CELL CARCINOMA	0	1	1
	8140/3 ADENOCARCINOMA	72	78	150
	8430/3 MUCOEPIDERMOID CARCINOMA	1	0	1
	8480/3 MUCINOUS ADENOCARCINOMA	3	0	3
	8720/3 MALIGNANT MELANOMA	0	2	2
	8936/3 GASTROINTESTINAL STROMAL SARCOMA	0	1	1
C21	MALIGNANT NEOPLASM OF ANUS AND ANAL	4	6	10
	8070/3 SQUAMOUS CELL CARCINOMA	1	1	2
	8140/3 ADENOCARCINOMA	3	3	6
	8720/3 MALIGNANT MELANOMA	0	2	2
C22	MALIGNANT NEOPLASM OF LIVER AND INTRAHEPATIC BILE DUCTS	453	169	622
	8000/3 NEOPLASM, MALIGNANT,NOS	1	1	2
	8020/3 CARCINOMA, UNDIFFERENTIATED	0	1	1
	8140/3 ADENOCARCINOMA	8	8	16
	8160/3 CHOLANGIOCARCINOMA	70	42	112
	8170/3 HEPATOCELLULAR CARCINOMA	372	117	489
	8970/3 HEPATOBLASTOMA	2	0	2
C23	MALIGNANT NEOPLASM OF GALL BLADDER	11	10	21
	8000/3 NEOPLASM, MALIGNANT,NOS	2	3	5
	8140/3 ADENOCARCINOMA	9	6	15
	8260/3 PAPILLARY ADENOCARCINOMA	0	1	1
C24	MALIGNANT NEOPLASM OF OTHER AND UNSPECIFIED PARTS OF BILIARY TRACT	7	11	18
	8000/3 NEOPLASM, MALIGNANT,NOS	1	2	3
	8070/3 SQUAMOUS CELL CARCINOMA	1	0	1
	8140/3 ADENOCARCINOMA	5	8	13
	8260/3 PAPILLARY ADENOCARCINOMA	0	1	1
C25	MALIGNANT NEOPLASM OF PANCREAS	24	29	53
	8000/3 NEOPLASM, MALIGNANT,NOS	14	14	28
	8010/3 CARCINOMA	0	2	2
	8050/3 PAPILLARY CARCINOMA	1	0	1
	8140/3 ADENOCARCINOMA	9	11	20
	8246/3 NEUROENDOCRINE CARCINOMA	0	1	1
	8500/2 INTRADUCTAL CA NONINFILTRATING	0	1	1
C30	MALIGNANT NEOPLASM OF NASAL CAVITY AND MIDDLE EAR	14	11	25
	8010/3 CARCINOMA	1	0	1
	8020/3 CARCINOMA, UNDIFFERENTIATED	1	1	2
	8070/3 SQUAMOUS CELL CARCINOMA	6	4	10
	8140/3 ADENOCARCINOMA	2	1	3
	8200/3 ADENOID CYSTIC CARCINOMA	1	4	5
	8430/3 MUCOEPIDERMOID CARCINOMA	1	0	1
	8720/3 MALIGNANT MELANOMA	1	0	1
	9590/3 MALIGNANT LYMPHOMA	0	1	1
	9675/3 MALIGNANT LYMPHOMA, MIXED SMALL AND LARGE CELL	1	0	1
C31	MALIGNANT NEOPLASM OF ACCESSORY SINUSES	9	4	13
	8000/3 NEOPLASM, MALIGNANT,NOS	3	0	3
	8020/3 CARCINOMA, UNDIFFERENTIATED	2	1	3

CODE	SITE	No. of Cases		TOTAL
		MALE	FEMALE	
	GRAND TOTAL	2948	3429	6377
	8070/3 SQUAMOUS CELL CARCINOMA	2	1	3
	8077/2 INTRAEPITHELIAL CA CIN III	1	0	1
	8140/3 ADENOCARCINOMA	0	1	1
	8200/3 ADENOID CYSTIC CARCINOMA	1	1	2
C32	MALIGNANT NEOPLASM OF LARYNX	97	3	100
	8000/3 NEOPLASM, MALIGNANT,NOS	10	0	10
	8020/3 CARCINOMA, UNDIFFERENTIATED	1	0	1
	8070/3 SQUAMOUS CELL CARCINOMA	84	2	86
	8200/3 ADENOID CYSTIC CARCINOMA	0	1	1
	8430/3 MUCOEPIDERMOID CARCINOMA	1	0	1
	8801/3 SPINDLE CELL SARCOMA	1	0	1
C33-C34	MALIGNANT NEOPLASM OF TRACHEA BRONCHUS AND LUNG	337	183	520
	8000/3 NEOPLASM, MALIGNANT,NOS	38	23	61
	8010/3 CARCINOMA	5	1	6
	8012/3 LARGE CELL CARCINOMA, NOS	0	2	2
	8020/3 CARCINOMA, UNDIFFERENTIATED	9	2	11
	8022/3 PLEOMORPHIC CARCINOMA	1	0	1
	8041/3 SMALL CELL CARCINOMA	18	2	20
	8046/3 NON-SMALL CELL CARCINOMA	61	12	73
	8050/3 PAPILLARY CARCINOMA	1	0	1
	8070/3 SQUAMOUS CELL CARCINOMA	44	20	64
	8140/3 ADENOCARCINOMA	149	111	260
	8200/3 ADENOID CYSTIC CARCINOMA	2	2	4
	8246/3 NEUROENDOCRINE CARCINOMA, NOS	1	0	1
	8250/3 BRONCHIO-ALEVOLAR ADENOCARCINOMA	1	3	4
	8251/3 ALVEOLAR ADENOCARCINOMA	4	0	4
	8260/3 PAPILLARY ADENOCARCINOMA	0	1	1
	8310/3 CLEAR CELL ADENOCARCINOMA	0	1	1
	8480/3 MUCINOUS ADENOCARCINOMA	0	1	1
	8560/3 ADENOSQUAMOUS CARCINOMA	1	0	1
	8973/3 PLEUROPULMONARY BLASTOMA	1	0	1
	9120/3 HAEMANGIOSARCOMA	0	1	1
	9590/3 MALIGNANT LYMPHOMA	1	0	1
	9680/3 MALIGNANT LYMPHOMA, LARGE CELL, DIFFUSE	0	1	1
C37	MALIGNANT NEOPLASM OF THYMUS	0	4	4
	8580/3 THYMOMA, MALIGNANT	0	4	4
C38	MALIGNANT NEOPLASM OF HEART, MEDIASTINUM AND PLEURA	4	1	5
	8801/3 SPINDLE CELL SARCOMA	1	0	1
	9064/3 GERMINOMA	2	0	2
	9085/3 MIXED GERM CELL TUMOUR	1	0	1
	9680/3 MALIGNANT LYMPHOMA, LARGE CELL, DIFFUSE	0	1	1
C40-C41	MALIGNANT NEOPLASM OF BONE AND CARTILAGE	33	24	57
	8000/3 NEOPLASM, MALIGNANT,NOS	2	0	2
	9040/3 SYNOVIAL SARCOMA	1	0	1
	9180/3 OSTEOSARCOMA	16	17	33
	9220/3 CHONDROSARCOMA	2	5	7
	9230/3 CHONDROBLASTOMA, MALIGNANT	1	0	1
	9250/3 GIANT CELL TUMOUR OF BONE, MALIGNANT	8	2	10
	9260/3 EWING'S SARCOMA	3	0	3

CODE	SITE	No. of Cases		
		MALE	FEMALE	TOTAL
	GRAND TOTAL	2948	3429	6377
C43	MALIGNANT MELANOMA OF SKIN	13	14	27
	8720/3 MALIGNANT MELANOMA	11	14	25
	8723/3 MALIGNANT MELANOMA, REGRESSING	1	0	1
	8771/3 EPITHELIOID CELL MELANOMA	1	0	1
C44	OTHER MALIGNANT NEOPLASM OF SKIN	62	70	132
	8000/3 NEOPLASM, MALIGNANT,NOS	2	1	3
	8051/3 VERRUCOUS CARCINOMA	1	0	1
	8070/3 SQUAMOUS CELL CARCINOMA	22	22	44
	8090/3 BASAL CELL CARCINOMA	29	41	70
	8094/3 BASOSQUAMOUS CARCINOMA	1	0	1
	8140/3 ADENOCARCINOMA	0	2	2
	8200/3 ADENOID CYSTIC CARCINOMA	1	0	1
	8410/3 SEBACEOUS ADENOCARCINOMA	2	1	3
	8430/3 MUCOEPIDERMOID CARCINOMA	1	0	1
	8832/3 DERMATOFIBROSARCOMA	2	2	4
	9120/3 HAEMANGIOSARCOMA	1	1	2
C46	KAPOSI'S SARCOMA	1	1	2
	9140/3 KAPOSI'S SARCOMA	1	1	2
C47	MALIGNANT NEOPLASM OF PERIPHERAL NERVE AND AUTONOMIC NERVOUS SYSTEM	5	4	9
	9500/3 NEUROBLASTOMA	3	0	3
	9560/3 NEURILEMMOMA,MALIGNANT	2	4	6
C48	MALIGNANT NEOPLASM OF RETROPERITONIUM AND PERITONIUM	0	1	1
	8890/3 LEIOMYOSARCOMA	0	1	1
C49	MALIGNANT NEOPLASM OF OTHER CONECTIVE TISSUD AND SOFT TISSUE	37	24	61
	8800/3 SARCOMA	6	0	6
	8801/3 SPINDLE CELL SARCOMA	4	1	5
	8802/3 GIANT CELL SARCOMA, SOFT TISSUE	1	2	3
	8804/3 EPITHELIOID SARCOMA	1	0	1
	8810/3 FIBROSARCOMA	1	1	2
	8814/3 INFANTILE FIBROSARCOMA	0	1	1
	8830/3 FIBROUS HISTIOCYTOMA, MALIGNANT	4	1	5
	8850/3 LIPOSARCOMA	6	1	7
	8852/3 MYXOID LIPOSARCOMA	2	0	2
	8890/3 LEIOMYOSARCOMA	2	8	10
	8900/3 RHABDOMYOSARCOMA	3	3	6
	8901/3 PLEOMORPHIC RHABDOMYOSARCOMA	0	2	2
	8910/3 EMBRYONAL RHABDOMYOSARCOMA	0	1	1
	9040/3 SYNOVIAL SARCOMA	0	1	1
	9120/3 HAEMANGIOSARCOMA	2	0	2
	9150/3 HAEMANGIOPERICYTOMA, MALIGNANT	3	1	4
	9251/3 MALIGNAGT GIANT CELL TU OF SOFT TIS	1	0	1
	9260/3 EWING'S SARCOMA	1	0	1
	9581/3 ALVEOLAR SOFT PART SARCOMA	0	1	1
C50	MALIGNANT NEOPLASM OF BREAST	2	841	843
	8000/3 NEOPLASM, MALIGNANT,NOS	0	36	36
	8010/3 CARCINOMA	0	1	1
	8050/3 PAPILLARY CARCINOMA	0	1	1
	8140/3 ADENOCARCINOMA	0	10	10
	8200/3 ADENOID CYSTIC CARCINOMA	0	1	1
	8201/3 CRIBIFORM CARCINOMA	0	1	1

CODE	SITE	No. of Cases		TOTAL
		MALE	FEMALE	
	GRAND TOTAL	2948	3429	6377
	8246/3 NEUROENDOCRINE CARCINOMA	0	1	1
	8260/3 PAPILLARY ADENOCARCINOMA	0	3	3
	8480/3 MUCINOUS ADENOCARCINOMA	0	13	13
	8500/2 INTRADUCTAL CARCINOMA	0	46	46
	8500/3 INFILTRATING DUCT CARCINOMA	2	698	700
	8510/3 MEDULLARY CARCINOMA	0	4	4
	8520/2 LOBULAR CARCINOMA IN SITU	0	1	1
	8520/3 LOBULAR CARCINOMA	0	17	17
	8522/2 INTRADUCT AND LOBULAR CARCINOMA INSITU	0	1	1
	8522/3 INFILTRAT DUCT AND LOBULAR CARCINOMA	0	1	1
	8540/3 PAGET'S DISEASE, MAMMARY	0	1	1
	9020/3 PHYLLODES TUMOUR, MALIGNANT	0	3	3
	9120/3 HAEMANGIOSARCOMA	0	2	2
C51	MALIGNANT NEOPLASM OF VULVA	0	16	16
	8000/3 NEOPLASM, MALIGNANT,NOS	0	1	1
	8010/3 CARCINOMA	0	1	1
	8070/3 SQUAMOUS CELL CARCINOMA	0	10	10
	8071/3 SQUAMOUS CELL CARCINOMA KERATINIZING	0	1	1
	8140/3 ADENOCARCINOMA	0	1	1
	8542/3 PAGET'S DISEASE, EXTRA MAMMARY	0	1	1
	8800/3 SARCOMA	0	1	1
C52	MALIGNANT NEOPLASM OF VAGINA	0	19	19
	8000/3 NEOPLASM, MALIGNANT,NOS	0	1	1
	8010/2 CARCINOMA IN SITU	0	1	1
	8020/3 CARCINOMA, UNDIFFERENTIATED	0	1	1
	8070/3 SQUAMOUS CELL CARCINOMA	0	5	5
	8071/3 SQUAMOUS CELL CARCINOMA KERATINIZING	0	1	1
	8072/3 SQUAMOUS CELL CARCINOMA, LARGE CELL, NONKERATINIZING	0	3	3
	8140/3 ADENOCARCINOMA	0	4	4
	8260/3 PAPILLARY ADENOCARCINOMA	0	1	1
	8480/3 MUCINOUS ADENOCARCINOMA	0	1	1
	8560/3 ADENOSQUAMOUS CARCINOMA	0	1	1
C53	MALIGNANT NEOPLASM OF CERVIX	0	523	523
	8000/3 NEOPLASM, MALIGNANT,NOS	0	25	25
	8010/2 CARCINOMA IN SITU	0	3	3
	8010/3 CARCINOMA	0	1	1
	8020/3 CARCINOMA, UNDIFFERENTIATED	0	2	2
	8041/3 SMALL CELL CARCINOMA	0	4	4
	8050/3 PAPILLARY CARCINOMA	0	1	1
	8070/2 SQUAMOUS CELL CARCINOMA, IN SITU	0	3	3
	8070/3 SQUAMOUS CELL CARCINOMA	0	121	121
	8071/3 SQUAMOUS CELL CARCINOMA, KERATINIZING	0	24	24
	8072/3 SQUAMOUS CELL CARCINOMA, LARGE CELL, NONKERATINIZING	0	161	161
	8077/2 SQUAMOUS INTRAEPITHELIAL NEOPLASIA, GRADE III	0	39	39
	8140/2 ADENOCARCINOMA IN SITU	0	3	3
	8140/3 ADENOCARCINOMA	0	100	100
	8246/3 NEUROENDOCRINE CARCINOMA	0	4	4
	8260/3 PAPILLARY ADENOCARCINOMA	0	8	8
	8310/3 CLEAR CELL ADENOCARCINOMA	0	3	3
	8380/3 ENDOMETRIOD CARCINOMA	0	5	5
	8384/3 ADENOCA, ENDOCERVICAL TYPE	0	5	5
	8560/3 ADENOSQUAMOUS CARCINOMA	0	11	11

CODE	SITE	No. of Cases		
		MALE	FEMALE	TOTAL
	GRAND TOTAL	2948	3429	6377
C54-C55	MALIGNANT NEOPLASM OF CORPUS UTERI AND UTERUS PART UNSPECIFIED	0	131	131
	8000/3 NEOPLASM, MALIGNANT,NOS	0	2	2
	8140/3 ADENOCARCINOMA	0	56	56
	8260/3 PAPILLARY ADENOCARCINOMA	0	1	1
	8310/3 CLEAR CELL ADENOCARCINOMA	0	3	3
	8380/3 ADENOCARCINOMA, ENDOMETRIOD TYPE	0	56	56
	8384/3 ADENOCARCINOMA, ENDOCERVICAL TYPE	0	4	4
	8441/3 SEROUS CYSTADENOCARCINOMA	0	1	1
	8560/3 ADENOSQUAMOUS CARCINOMA	0	4	4
	8890/3 LEIOMYOSARCOMA	0	2	2
	8930/3 ENDOMETRIAL STROMAL SARCOMA	0	2	2
C56	MALIGNANT NEOPLASM OF OVARY	0	115	115
	8000/3 NEOPLASM, MALIGNANT,NOS	0	3	3
	8010/3 CARCINOMA	0	1	1
	8140/3 ADENOCARCINOMA	0	30	30
	8260/3 PAPILLARY ADENOCARCINOMA	0	5	5
	8310/3 CLEAR CELL ADENOCARCINOMA	0	18	18
	8380/3 ADENOCARCINOMA, ENDOMETRIOD TYPE	0	8	8
	8440/3 CYSTADENOCARCINOMA	0	3	3
	8441/3 SEROUS CYSTADENOCARCINOMA	0	14	14
	8460/3 PAPILLARY SEROUS CYSTADENOCA	0	3	3
	8470/3 MUCINOUS CYSTADENOCARCINOMA	0	22	22
	8620/3 GRANULOSA CELL TUMOUR	0	4	4
	8980/3 CARCINOSARCOMA	0	1	1
	9060/3 DYSGERMINOMA	0	1	1
	9071/3 ENDODERMAL SINUS TUMOUR	0	1	1
	9082/3 MALIGNANT TERATOMA, UNDIFF	0	1	1
C57	MALIGNANT NEOPLASM OF OTHER AND UNSPECIFIED	0	2	2
	8140/3 ADENOCARCINOMA	0	1	1
	8441/3 SEROUS CYSTADENOCARCINOMA	0	1	1
C58	MALIGNANT NEOPLASM OF PLACENTA	0	4	4
	9100/3 CHORIOCARCINOMA	0	4	4
C60	MALIGNANT NEOPLASM OF PENIS	17	0	17
	8000/3 NEOPLASM, MALIGNANT,NOS	1	0	1
	8010/2 CARCINOMA IN SITU	1	0	1
	8070/3 SQUAMOUS CELL CARCINOMA	15	0	15
C61	MALIGNANT NEOPLASM OF PROSTATE	472	0	472
	8000/3 NEOPLASM, MALIGNANT, NOS	5	0	5
	8020/3 CARCINOMA, UNDIFFERENTIATE	1	0	1
	8140/3 ADENOCARCINOMA	464	0	464
	8890/3 LEIOMYOSARCOMA	1	0	1
	9680/3 MALIGNANT LYMPHOMA, LARGE CELL, DIFFUSE	1	0	1
C62	MALIGNANT NEOPLASM OF TESTIS	3	0	3
	9061/3 SEMINOMA	3	0	3
C63	MALIGNANT NEOPLASM OF OTHER AND UNSPECIFIED MALE GENITAL ORGAN	2	0	2
	8542/3 PAGET'S DISEASE,EXTRA MAMMARY	2	0	2

CODE	SITE	No. of Cases		
		MALE	FEMALE	TOTAL
	GRAND TOTAL	2948	3429	6377
C64	MALIGNANT NEOPLASM OF KIDNEY	35	15	50
	8000/3 NEOPLASM, MALIGNANT,NOS	0	1	1
	8310/3 CLEAR CELL ADENOCARCINOMA	1	0	1
	8312/3 RENAL CELL CARCINOMA	34	14	48
C65	MALIGNANT NEOPLASM OF RENAL PELVIS	5	10	15
	8120/3 TRANSITIONAL CELL CARCINOMA	5	10	15
C66	MALIGNANT NEOPLASM OF URETER	0	1	1
	8120/3 TRANSITIONAL CELL CARCINOMA	0	1	1
C67-C68	MALIGNANT NEOPLASM OF BLADDER AND OF OTHER AND UNSPECIFIED PART OF URINARY ORGANS	149	55	204
	8000/3 NEOPLASM, MALIGNANT,NOS	4	5	9
	8010/3 CARCINOMA	1	0	1
	8070/3 SQUAMOUS CELL CARCINOMA	2	3	5
	8120/3 TRANSITIONAL CELL CARCINOMA	137	40	177
	8140/3 ADENOCARCINOMA	3	6	9
	8800/3 SARCOMA	0	1	1
	8890/3 LEIOMYOSARCOMA	1	0	1
	8900/3 RHABDOMYOSARCOMA	1	0	1
C69	MALIGNANT NEOPLASM OF EYE AND ADNEXA	23	14	37
	8000/3 NEOPLASM, MALIGNANT,NOS	0	1	1
	8070/2 SQUAMOUS CELL CARCINOMA, CARCINOMA IN SITU	1	0	1
	8070/3 SQUAMOUS CELL CARCINOMA	4	4	8
	8140/3 ADENOCARCINOMA	2	1	3
	8430/3 MUCOEPIDERMOID CARCINOMA	1	0	1
	8720/3 MALIGNANT MELANOMA	3	0	3
	8800/3 SARCOMA	1	0	1
	8894/3 ANGIOMYOSARCOMA	1	0	1
	9510/3 RETINOBLASTOMA	10	7	17
	9590/3 MALIGNANT LYMPHOMA	0	1	1
C70	MALIGNANT NEOPLASM OF MENIGES	9	21	30
	9530/3 MENINGIOMA, MALIGNANT	9	21	30
C71	MALIGNANT NEOPLASM OF BRAIN	48	51	99
	8000/3 NEOPLASM, MALIGNANT,NOS	4	4	8
	9064/3 GERMINOMA	3	2	5
	9150/3 HAEMANGIOPERICYTOMA, MALIGNANT	1	1	2
	9380/3 GLIOMA, MALIGNANT	3	4	7
	9382/3 MIXED GLIOMA	0	1	1
	9391/3 EPENDYMOMA	3	2	5
	9392/3 EPENDYMOMA , ANAPLASTIC	2	0	2
	9400/3 ASTROCYTOMA	7	8	15
	9401/3 ASTROCYOTMA, ANAPLASTIC	2	3	5
	9440/3 GLIOBLASTOMA	13	17	30
	9442/3 GLIOSARCOMA	0	1	1
	9450/3 OLIGODENDROGLIOMA	4	1	5
	9460/3 OLIGODENDROBLASTOMA	0	1	1
	9470/3 MEDULLOBLASTOMA	2	3	5
	9490/3 GANGLIONEUROBLASTOMA	1	0	1
	9503/3 NEUROEPITHELIOMA	0	1	1
	9505/3 GANGLIOMA, ANAPLASTIC	0	1	1
	9590/3 MALIGNANT LYMPHOMA	0	1	1

CODE	SITE	No. of Cases		TOTAL
		MALE	FEMALE	
	GRAND TOTAL	2948	3429	6377
	9591/3 MALIGNANT LYNPHOMA, NONHODKIN'S	1	0	1
	9680/3 MALIGNANT LYMPHOMA, LARGE CELL, DIFFUSE	2	0	2
C72	MALIGNANT NEOPLASM OF SPINAL CORD, CRANIAL NERVES AND OTHER PART OF CENTRAL NEROUS SYSTEM	0	1	1
	9391/3 EPENDYMOMA	0	1	1
C73	MALIGNANT NEOPLASM OF THYROID	28	153	181
	8000/3 NEOPLASM, MALIGNANT,NOS	2	3	5
	8020/3 CARCINOMA, UNDIFFERENTIATED	3	0	3
	8021/3 CARCINOMA, ANAPLASTIC	1	3	4
	8050/3 PAPILLARY CARCINOMA	16	100	116
	8070/3 SQUAMOUS CELL CARCINOMA	1	0	1
	8140/3 ADENOCARCINOMA	0	3	3
	8330/3 FOLLICULAR ADENOCARCINOMA	2	24	26
	8337/3 INSULAR CARCINOMA	1	1	2
	8340/3 PAPILLARY CARCINOMA, FOLLICULAR VARIANT	0	1	1
	8341/3 PAPILLARY MICROCARCINOMA	0	16	16
	8510/3 MEDULLARY CARCINOMA	2	2	4
C74	MALIGNANT NEOPLASM OF ADRENAL GLAND	2	1	3
	8000/3 NEOPLASM, MALIGNANT,NOS	1	0	1
	8200/3 ADENOID CYSTIC CARCINOMA	1	1	2
C75	MALIGNANT NEOPLASM OF OTHER ENDOCRINE GLANDS AND RELATE STRUCTURES	7	5	12
	8000/3 NEOPLASM, MALIGNANT,NOS	5	2	7
	8272/3 PITUITARY CARCINOMA	1	3	4
	9064/3 GERMINOMA	1	0	1
C76-C80	MALIGNANT NEOPLASM WITHOUT SPECIFIED SITE AND METASTATIC MALGNANT IN VARIOUS SITES	113	146	259
	8000/3 NEOPLASM, MALIGNANT,NOS	12	19	31
	8010/3 CARCINOMA	6	6	12
	8020/3 CARCINOMA, UNDIFFERENTIATED	9	10	19
	8032/3 SPINDLE CELL CARCINOMA	0	3	3
	8050/3 PAPILLARY CARCINOMA	0	3	3
	8070/3 SQUAMOUS CELL CARCINOMA	18	20	38
	8072/3 SQUAMOUS CELL CARCINOMA, LARGE CELL, NONKERATINIZING	0	1	1
	8140/3 ADENOCARCINOMA	50	70	120
	8200/3 ADENOID CYSTIC CARCINOMA	1	2	3
	8246/3 NEUROENDOCRINE CARCINOMA	2	0	2
	8260/3 PAPILLARY ADENOCARCINOMA	0	2	2
	8310/3 CLEAR CELL ADENNCARCINOMA	1	0	1
	8312/3 RENAL CELL CARCINOMA	1	0	1
	8430/3 MUCOEPIDERMOID CARCINOMA	2	0	2
	8441/3 SEROUS CYSTADENOCARCINOMA	0	2	2
	8480/3 MUCINOUS ADENOCARCINOMA	1	0	1
	8490/3 SIGNET RING CELL CARCINOMA	3	0	3
	8520/3 LOBULAR CARCINOMA	0	1	1
	8550/3 ACINAR CELL CARCINOMA	0	1	1
	8560/3 ADENOSQUAMOUS CARCINOMA	0	1	1
	8574/3 ADENOCAR WITH NEUROENDOCRINE	0	1	1
	8575/3 METAPLASTIC CARCINOMA	0	1	1
	8720/3 MALIGNANT MELANOMA	0	1	1
	8800/3 SARCOMA	2	0	2

CODE	SITE	No. of Cases		TOTAL
		MALE	FEMALE	
	GRAND TOTAL	2948	3429	6377
	8810/3 FIBROSARCOMA	1	0	1
	8830/3 FIBROUS HISTIOCYTOMA, MALIGNANT	1	0	1
	9064/3 GERMINOMA	2	0	2
	9071/3 ENDODERMAL SINUS TUMOUR	0	1	1
	9250/3 GIANT CELL TUMOUR OF BONE , MALIGNANT	1	0	1
	9590/3 MALAGNANT LYMPHOMA	0	1	1
C81	HODGKIN'S DISEASE	15	10	25
	9591/3 MALIGNANT LYMPHOMA, NON- HODGKIN'S	1	0	1
	9650/3 HODGKIN'S DISEASE	14	10	24
C82	FOLLICULAR NON-HODGKIN'S LYMPHOMA	2	2	4
	9590/3 MALAGNANT LYMPHOMA	0	2	2
	9690/3 MALIGNANT LYMPHOMA, FOLLICULAR	2	0	2
C83	DIFFUSE NON-HODGKIN'S LYMPHOMA	13	12	25
	9590/3 MALAGNANT LYMPHOMA	0	1	1
	9670/3 MALIGNANT LYMPHOMA, SMALL LYMPHOCYTIC	0	1	1
	9675/3 MALIGNANT LYMPHOMA, MIXED SMALL AND LARGE CELL	1	0	1
	9680/3 MALIGNANT LARGE CELL DIFFUSE	6	5	11
	9684/3 MALIGNANT LYMPHOMA, IMMUNOBLASTIC	3	4	7
	9687/3 BURKITT'S LYMPHOMA	3	1	4
C84	PERIPHERAL AND CUTANEOUS T-CELL LYMPHOMA	2	6	8
	9680/3 MALIGNANT LARGE CELL DIFFUSE	2	5	7
	9705/3 AILD, PERIPHERAL T-CELL LYMPHOMA	0	1	1
C85	OTHER AND UNSPECIFIED TYPE OF NON-HODGKIN LYMPHOMA	72	88	160
	9590/3 MALIGNANT LYMPHOMA	58	65	123
	9591/3 MALIGNANT LYMPHOMA, NON-HODGKIN	2	1	3
	9675/3 MALIGNANT LYMPHOMA, MIXED SMALL AND LARGE CELL, DIFFUSE	1	3	4
	9680/3 MALIGNANT LYMPHOMA, LARGE CELL, DIFFUSE	11	19	30
C88	MALIGNANT IMMUNOPROLIPHERATIVE DISEASE	1	0	1
	9761/3 WALDENSTROM'S MACROGLOBULINAEMIA	1	0	1
C90	MULTIPLE MYELOMA AND MALIGNANT PLASMA CELL NEOPLASM	30	39	69
	9731/3 PLASMACYTOMA	0	1	1
	9732/3 MULTIPLE MYELOMA	28	37	65
	9733/3 PLASMA CELL LEUKAEMIA	1	0	1
	9734/3 PLASMACYTOMA, EXTRAMEDULLARY	1	1	2
C91	LYMPHOID LEUKAEMIA	61	37	98
	9823/3 CHRONIC LYMPHOCYTIC LEUKAEMIA	12	12	24
	9835/3 ACUTE LYMPHOBLASTIC LEUKAEMIA	49	25	74
C92	MYELOID LEUKAEMIA	41	61	102
	9861/3 ACUTE MYELOID LEUKAEMIA	17	35	52
	9863/3 CHRONIC MYELOID LEUKAEMIA	23	23	46
	9866/3 ACUTE PROMYELOCYTIC LEUKAEMIA	0	2	2
	9867/3 ACUTE MYELOMONOCYTIC LEUKAEMIA	1	1	2
C93	MONOCYTIC LEUKAEMIA	2	2	4
	9891/3 ACUTE MONOCYTIC LEUKAEMIA	2	2	4

CODE	SITE	No. of Cases		
		MALE	FEMALE	TOTAL
	GRAND TOTAL	2948	3429	6377
C94-C95	OTHER SPECIFIED AND UNSPECIFIED LEUKAEMIA	14	17	31
	9800/3 LEUKAEMIA	3	1	4
	9801/3 ACUTE LEUKAEMIA	11	15	26
	9931/3 ACUTE PANMYELOSIS	0	1	1
C96	OTHER AND UNSPECIFIED MALIGNANT NEOPLASM OF LYMPHOID, HAEMATIC, AND RELATED TISSUE	2	1	3
	9750/3 MALIGNANT, HISTIOCYTOSIS	0	1	1
	9754/3 LETTERER-SIEWE DISEASE	2	0	2

TABLE VI
THE TEN LEADING SITES

Site	MALE	FEMALE	TOTAL	%
All Sites	2948	3429	6377	100.00
Breast	2	841	843	13.22
Liver	453	169	622	9.75
Cervix	0	523	523	8.20
Lung	337	183	520	8.15
Colon and Rectum	240	246	486	7.62
Prostate	472	0	472	7.40
Leukaemia	118	117	235	3.69
Lymphoma	104	118	222	3.48
Thyroid	28	153	181	2.84
Oral cavity	87	78	165	2.59

TABLE VI.I
THE TEN LEADING SITES

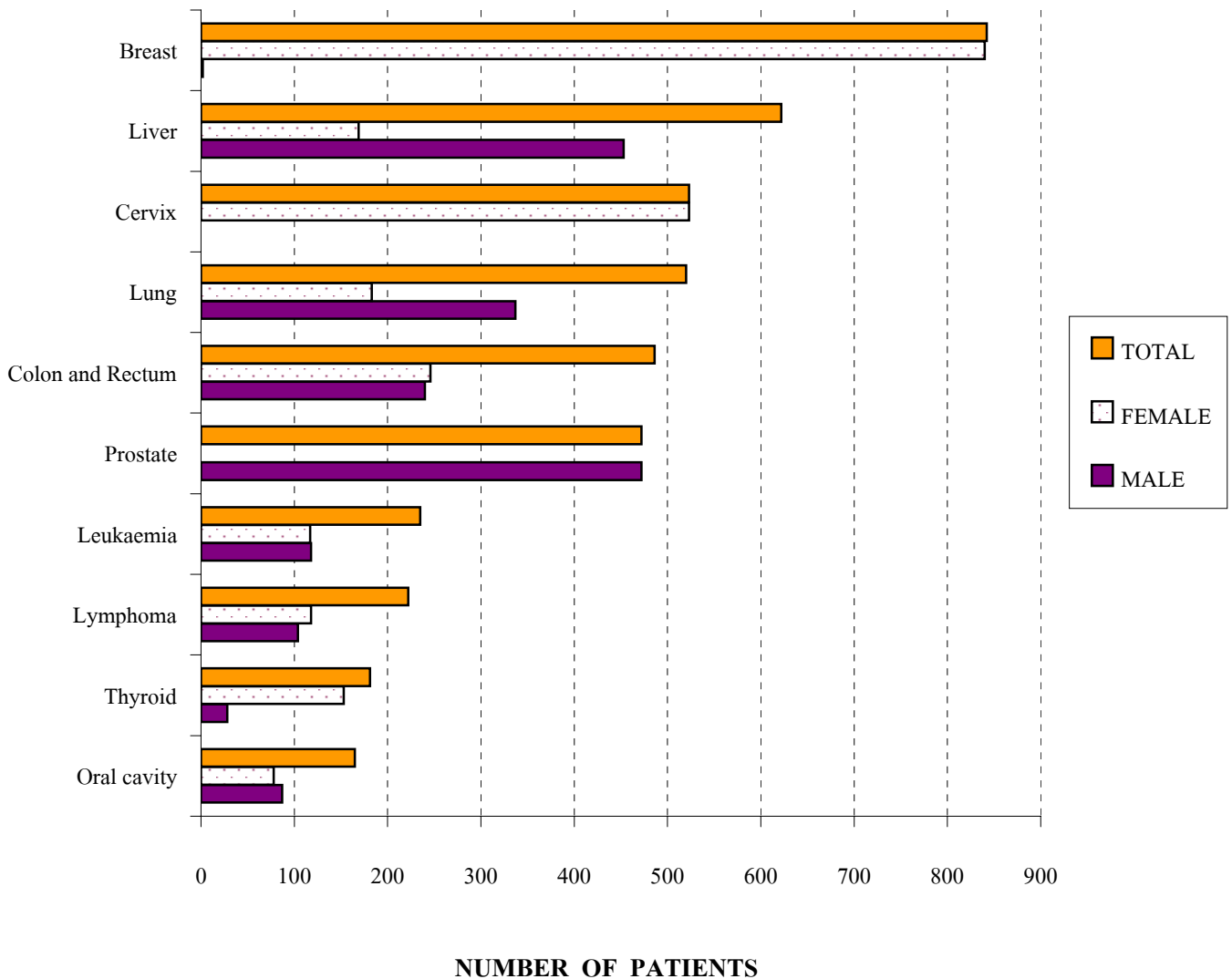


TABLE VII
MALIGNANT NEOPLASM IN CHILDHOOD

Code		No. of cases			>0-4		5-9		10-15	
		Total	M	F	M	F	M	F	M	F
Total		149	88	61	30	22	22	15	36	24
C07	Parotid gland	1	1	0	0	0	0	0	1	0
C11	Nasopharynx	3	3	0	1	0	1	0	1	0
C16	Stomach	1	0	1	0	0	0	0	0	1
C20	Rectum	1	1	0	0	0	0	0	1	0
C22	Liver	2	2	0	1	0	0	0	1	0
C34	Lung	2	1	1	1	1	0	0	0	0
C40-C41	Bone and joint	12	6	6	0	0	3	2	3	4
C44	Skin	1	1	0	0	0	0	0	1	0
C47	Peripheral nerves	3	3	0	1	0	1	0	1	0
C45-C49	Connective and soft tissue	4	3	1	0	1	1	0	2	0
C56	Ovary	2	0	2	0	1	0	1	0	0
C64-C65	Kidney	1	0	1	0	1	0	0	0	0
C67	Bladder	1	1	0	0	0	0	0	1	0
C69	Eye and adnexa	17	10	7	10	6	0	0	0	1
C71-C72	Brain	28	15	13	0	3	5	2	10	8
C74-C75	Other Endocrine gland	3	2	1	1	0	0	0	1	1
C76-C80	Ill defined site	4	1	3	0	2	1	0	0	1
C81	Hodgkin's	3	3	0	1	0	0	0	2	0
C85	Malig Lymphoma	5	3	2	0	1	0	0	3	1
C91	Lymphoid leukamia	36	24	12	8	3	9	7	7	2
C92	Myeloid leukamia	10	2	8	2	2	0	2	0	4
C94-C96	Leukamia of unspeified type	9	6	3	4	1	1	1	1	1

TABLE VIII

PRIMARY SITES AS TO AGE AND SEX

SITE / Age-Group		Under 1	1+	5+	10+	15+	20+	25+	30+	35+	40+	45+	50+	55+	60+	65+	70+	75+	80+	85+	90+	95+	Unknown	
GRAND TOTAL		6377	0	52	37	60	51	80	111	206	294	480	688	759	737	711	687	623	420	246	90	32	5	8
MALE		2948	0	30	22	35	31	26	40	64	92	147	212	304	362	380	388	369	244	142	38	16	2	4
FEMALE		3429	0	22	15	25	20	54	71	142	202	333	476	455	375	331	299	254	176	104	52	16	3	4
Upper lip	T	3	0	0	0	0	0	0	0	0	0	0	0	0	0	0	1	1	0	1	0	0	0	0
	M	1	0	0	0	0	0	0	0	0	0	0	0	0	0	0	1	0	0	0	0	0	0	0
	F	2	0	0	0	0	0	0	0	0	0	0	0	0	0	0	0	1	0	1	0	0	0	0
Lower lip	T	15	0	0	0	0	0	0	0	0	0	0	0	0	0	2	0	6	5	2	0	0	0	0
	M	1	0	0	0	0	0	0	0	0	0	0	0	0	0	0	1	0	0	0	0	0	0	0
	F	14	0	0	0	0	0	0	0	0	0	0	0	0	0	2	0	5	5	2	0	0	0	0
Base of tongue	T	14	0	0	0	0	0	1	1	2	0	1	2	1	2	1	1	1	0	1	0	0	0	0
	M	9	0	0	0	0	0	1	0	2	0	1	0	1	1	1	1	1	0	0	0	0	0	0
	F	5	0	0	0	0	0	0	0	1	0	0	2	0	1	0	0	0	0	1	0	0	0	0
Tongue, unspecified	T	51	0	0	0	0	1	1	1	1	8	8	5	3	4	6	5	5	3	0	0	0	0	0
	M	32	0	0	0	0	0	0	0	0	5	5	5	3	3	5	4	2	0	0	0	0	0	0
	F	19	0	0	0	0	1	1	1	1	3	3	0	0	1	1	1	3	3	0	0	0	0	0
Gum	T	14	0	0	0	0	0	0	1	0	1	0	1	1	1	2	0	2	2	2	1	0	0	0
	M	7	0	0	0	0	0	0	1	0	1	0	1	0	0	1	0	0	2	1	0	0	0	0
	F	7	0	0	0	0	0	0	0	0	0	0	0	1	1	1	0	2	0	1	1	0	0	0
Floor of mouth	T	20	0	0	0	0	0	0	0	0	2	2	1	4	5	3	2	1	0	0	0	0	0	0
	M	17	0	0	0	0	0	0	0	0	2	2	1	3	3	3	2	1	0	0	0	0	0	0
	F	3	0	0	0	0	0	0	0	0	0	0	0	1	2	0	0	0	0	0	0	0	0	0
Palate	T	19	0	0	0	0	0	0	1	2	2	3	3	5	1	1	0	1	0	0	0	0	0	0
	M	15	0	0	0	0	0	0	0	1	2	3	2	4	1	1	0	1	0	0	0	0	0	0
	F	4	0	0	0	0	0	0	0	1	1	0	0	1	1	0	0	0	0	0	0	0	0	0
Buccal mucosa	T	28	0	0	0	0	0	0	0	0	0	2	1	0	6	1	3	3	5	6	1	0	0	0
	M	4	0	0	0	0	0	0	0	0	0	0	0	0	1	0	0	2	1	0	0	0	0	0
	F	24	0	0	0	0	0	0	0	0	0	0	2	1	0	5	1	3	1	4	6	1	0	0
Mouth part, unspecified	T	1	0	0	0	0	0	0	0	0	1	0	0	0	0	0	0	0	0	0	0	0	0	0
	M	1	0	0	0	0	0	0	0	0	1	0	0	0	0	0	0	0	0	0	0	0	0	0
	F	0	0	0	0	0	0	0	0	0	0	0	0	0	0	0	0	0	0	0	0	0	0	0

SITE / Age-Group		Under 1	1+	5+	10+	15+	20+	25+	30+	35+	40+	45+	50+	55+	60+	65+	70+	75+	80+	85+	90+	95+	Unknown	
Parotid gland	T	22	0	0	0	1	1	0	1	3	1	2	3	4	1	1	1	1	2	0	0	0	0	0
	M	13	0	0	0	1	0	0	1	2	1	1	2	3	1	1	0	0	0	0	0	0	0	0
	F	9	0	0	0	0	1	0	0	1	0	1	1	1	0	0	1	1	2	0	0	0	0	0
Salivary gland, unspecified	T	9	0	0	0	0	0	0	1	0	1	1	1	1	1	1	1	0	0	0	1	0	0	0
	M	6	0	0	0	0	0	0	1	0	0	0	1	0	1	1	1	0	0	0	1	0	0	0
	F	3	0	0	0	0	0	0	0	0	1	1	0	1	0	0	0	0	0	0	0	0	0	0
Tonsil	T	29	0	0	0	0	0	0	2	2	4	5	5	4	1	4	2	0	0	0	0	0	0	0
	M	18	0	0	0	0	0	0	2	1	2	2	4	4	1	1	1	0	0	0	0	0	0	0
	F	11	0	0	0	0	0	0	0	0	1	2	3	1	0	0	3	1	0	0	0	0	0	0
Oropharynx	T	5	0	0	0	0	0	0	0	0	0	0	0	0	1	2	0	2	0	0	0	0	0	0
	M	5	0	0	0	0	0	0	0	0	0	0	0	0	1	2	0	2	0	0	0	0	0	0
	F	0	0	0	0	0	0	0	0	0	0	0	0	0	0	0	0	0	0	0	0	0	0	0
Nasopharynx	T	152	0	1	1	1	3	2	3	7	10	22	25	20	25	6	9	6	8	2	0	0	0	1
	M	118	0	1	1	1	3	1	3	3	7	15	22	13	21	5	7	4	8	2	0	0	0	1
	F	34	0	0	0	0	0	1	0	4	3	7	3	7	4	1	2	2	0	0	0	0	0	0
Pyriform sinus	T	27	0	0	0	0	0	0	0	0	2	0	5	6	5	6	0	2	0	0	0	0	0	1
	M	24	0	0	0	0	0	0	0	0	2	0	5	5	5	5	0	1	0	0	0	0	0	1
	F	3	0	0	0	0	0	0	0	0	0	0	0	1	0	1	0	1	0	0	0	0	0	0
Hypopharynx	T	12	0	0	0	0	0	0	0	0	0	2	5	1	2	1	0	1	0	0	0	0	0	0
	M	10	0	0	0	0	0	0	0	0	0	2	4	1	2	0	0	1	0	0	0	0	0	0
	F	2	0	0	0	0	0	0	0	0	0	0	0	1	0	0	1	0	0	0	0	0	0	0
Oral and pharynx unspecified	T	4	0	0	0	0	0	0	0	0	0	0	0	0	2	0	0	0	2	0	0	0	0	0
	M	4	0	0	0	0	0	0	0	0	0	0	0	0	2	0	0	0	2	0	0	0	0	0
	F	0	0	0	0	0	0	0	0	0	0	0	0	0	0	0	0	0	0	0	0	0	0	0
Esophagus	T	83	0	0	0	0	0	0	1	3	5	1	9	13	11	16	15	4	3	2	0	0	0	0
	M	70	0	0	0	0	0	0	1	3	5	0	7	13	11	14	10	3	2	1	0	0	0	0
	F	13	0	0	0	0	0	0	0	0	0	1	2	0	0	2	5	1	1	1	1	0	0	0
Stomach	T	107	0	0	0	1	0	0	1	5	2	7	5	11	23	12	14	6	11	3	3	3	0	0
	M	57	0	0	0	0	0	0	1	4	2	3	2	6	14	7	8	3	4	1	0	2	0	0
	F	50	0	0	0	1	0	0	0	1	0	4	3	5	9	5	6	3	7	2	3	1	0	0
Small intestine	T	27	0	0	0	0	0	0	1	2	3	3	0	5	3	5	2	2	1	0	0	0	0	0
	M	15	0	0	0	0	0	0	1	0	1	3	0	3	2	3	0	1	1	0	0	0	0	0
	F	12	0	0	0	0	0	0	0	2	2	0	0	2	1	2	2	1	0	0	0	0	0	0
Colon	T	289	0	0	0	0	1	1	4	8	16	20	30	37	38	32	52	27	16	3	3	1	0	0
	M	142	0	0	0	0	0	0	1	5	9	6	7	17	17	19	36	10	12	1	2	0	0	0
	F	147	0	0	0	0	0	1 ₂₇	1	3	3	7	14	23	20	21	13	16	17	4	2	1	1	0

SITE / Age-Group		Under 1	1+	5+	10+	15+	20+	25+	30+	35+	40+	45+	50+	55+	60+	65+	70+	75+	80+	85+	90+	95+	Unknown
Mediastinum	T	5	0	0	0	0	2	0	1	0	0	1	0	0	0	0	1	0	0	0	0	0	0
	M	4	0	0	0	0	1	0	1	0	0	1	0	0	0	0	1	0	0	0	0	0	0
	F	1	0	0	0	0	1	0	0	0	0	0	0	0	0	0	0	0	0	0	0	0	0
Bone and joint	T	57	0	0	5	7	13	3	7	4	4	1	4	4	3	1	1	0	0	0	0	0	0
	M	33	0	0	3	3	7	1	4	3	3	0	2	4	2	1	0	0	0	0	0	0	0
	F	24	0	0	2	4	6	2	3	1	1	1	2	0	1	0	1	0	0	0	0	0	0
Melanoma of skin	T	27	0	0	0	0	1	0	4	1	2	1	1	2	5	2	1	3	1	1	1	1	0
	M	13	0	0	0	0	1	0	1	0	2	0	0	2	2	1	1	3	0	0	0	0	0
	F	14	0	0	0	0	0	0	3	1	0	1	1	0	3	1	0	0	1	1	1	1	0
Skin	T	132	0	0	0	1	1	1	3	3	1	2	6	15	12	14	13	21	12	13	9	4	1
	M	62	0	0	0	1	0	0	0	2	0	1	2	6	6	8	7	10	10	4	4	1	0
	F	70	0	0	0	0	1	1	3	1	1	1	4	9	6	6	6	11	2	9	5	3	1
Kaposi's sarcoma	T	2	0	0	0	0	0	1	0	1	0	0	0	0	0	0	0	0	0	0	0	0	0
	M	1	0	0	0	0	0	0	0	1	0	0	0	0	0	0	0	0	0	0	0	0	0
	F	1	0	0	0	0	0	1	0	0	0	0	0	0	0	0	0	0	0	0	0	0	0
Peripheral nerve	T	9	0	1	1	1	0	0	1	0	2	1	1	0	0	0	1	0	0	0	0	0	0
	M	5	0	1	1	1	0	0	0	0	2	0	0	0	0	0	0	0	0	0	0	0	0
	F	4	0	0	0	0	0	1	0	0	1	1	0	0	0	0	1	0	0	0	0	0	0
Retro and peritonium	T	1	0	0	0	0	0	0	0	1	0	0	0	0	0	0	0	0	0	0	0	0	0
	M	0	0	0	0	0	0	0	0	0	0	0	0	0	0	0	0	0	0	0	0	0	0
	F	1	0	0	0	0	0	0	0	1	0	0	0	0	0	0	0	0	0	0	0	0	0
Connective and soft tissue	T	61	0	1	1	2	4	2	5	3	4	4	8	5	5	4	7	4	1	0	1	0	0
	M	37	0	0	1	2	2	1	3	3	2	2	5	2	3	1	6	3	0	0	1	0	0
	F	24	0	1	0	0	2	1	2	0	2	2	3	3	2	3	1	1	1	0	0	0	0
Breast	T	843	0	0	0	0	1	9	31	78	103	167	133	103	93	51	38	26	5	5	0	0	0
	M	2	0	0	0	0	0	0	0	0	0	1	0	0	1	0	0	0	0	0	0	0	0
	F	841	0	0	0	0	1	9	31	78	103	166	133	103	92	51	38	26	5	5	0	0	0
Vulva	T	16	0	0	0	0	0	1	0	2	3	3	0	1	1	2	0	1	0	1	0	1	0
	M	0	0	0	0	0	0	0	0	0	0	0	0	0	0	0	0	0	0	0	0	0	0
	F	16	0	0	0	0	0	1	0	2	3	3	0	1	1	2	0	1	0	1	0	1	0
Vagina	T	19	0	0	0	0	0	0	1	0	1	4	1	1	2	2	2	4	0	1	0	0	0
	M	0	0	0	0	0	0	0	0	0	0	0	0	0	0	0	0	0	0	0	0	0	0
	F	19	0	0	0	0	0	0	1	0	1	4	1	1	2	2	2	4	0	1	0	0	0
Cervix uteri	T	523	0	0	0	0	2	7	33	48	77	91	69	52	46	36	25	16	16	3	0	0	2
	M	0	0	0	0	0	0	0	0	0	0	0	0	0	0	0	0	0	0	0	0	0	0
	F	523	0	0	0	0	2 ₂₃	7	33	48	77	91	69	52	46	36	25	16	16	3	0	0	2

SITE / Age-Group		Under 1	1+	5+	10+	15+	20+	25+	30+	35+	40+	45+	50+	55+	60+	65+	70+	75+	80+	85+	90+	95+	Unknown	
Corpus uteri	T	129	0	0	0	0	0	0	0	3	7	18	30	29	12	12	10	2	3	1	1	0	1	
	M	0	0	0	0	0	0	0	0	0	0	0	0	0	0	0	0	0	0	0	0	0	0	0
	F	129	0	0	0	0	0	0	0	0	3	7	18	30	29	12	12	10	2	3	1	1	0	1
Uterus	T	2	0	0	0	0	0	0	0	0	0	2	0	0	0	0	0	0	0	0	0	0	0	0
	M	0	0	0	0	0	0	0	0	0	0	0	0	0	0	0	0	0	0	0	0	0	0	0
	F	2	0	0	0	0	0	0	0	0	0	2	0	0	0	0	0	0	0	0	0	0	0	0
Ovary	T	115	0	1	1	0	1	4	3	2	6	12	18	20	17	8	9	9	2	1	1	0	0	0
	M	0	0	0	0	0	0	0	0	0	0	0	0	0	0	0	0	0	0	0	0	0	0	0
	F	115	0	1	1	0	1	4	3	2	6	12	18	20	17	8	9	9	2	1	1	0	0	0
Female genital organ	T	2	0	0	0	0	0	0	0	0	0	0	0	0	0	0	1	0	0	0	0	0	0	0
	M	0	0	0	0	0	0	0	0	0	0	0	0	0	0	0	0	0	0	0	0	0	0	0
	F	2	0	0	0	0	0	0	0	0	0	0	0	0	0	0	1	0	0	0	0	0	0	0
Placenta	T	4	0	0	0	0	0	1	1	0	1	0	1	0	0	0	0	0	0	0	0	0	0	0
	M	0	0	0	0	0	0	0	0	0	0	0	0	0	0	0	0	0	0	0	0	0	0	0
	F	4	0	0	0	0	0	1	1	0	1	0	1	0	0	0	0	0	0	0	0	0	0	0
Penis	T	17	0	0	0	0	0	0	0	2	3	3	2	4	2	0	0	1	0	0	0	0	0	0
	M	17	0	0	0	0	0	0	0	2	3	3	2	4	2	0	0	1	0	0	0	0	0	0
	F	0	0	0	0	0	0	0	0	0	0	0	0	0	0	0	0	0	0	0	0	0	0	0
Prostate	T	472	0	0	0	0	0	0	0	0	4	6	23	39	78	96	92	80	44	6	2	2	0	0
	M	472	0	0	0	0	0	0	0	0	4	6	23	39	78	96	92	80	44	6	2	2	0	0
	F	0	0	0	0	0	0	0	0	0	0	0	0	0	0	0	0	0	0	0	0	0	0	0
Testis	T	3	0	0	0	0	1	1	0	0	0	1	0	0	0	0	0	0	0	0	0	0	0	0
	M	3	0	0	0	0	1	1	0	0	0	1	0	0	0	0	0	0	0	0	0	0	0	0
	F	0	0	0	0	0	0	0	0	0	0	0	0	0	0	0	0	0	0	0	0	0	0	0
Male genital organ	T	2	0	0	0	0	0	0	0	0	0	0	0	0	1	0	0	0	0	1	0	0	0	0
	M	2	0	0	0	0	0	0	0	0	0	0	0	0	1	0	0	0	0	1	0	0	0	0
	F	0	0	0	0	0	0	0	0	0	0	0	0	0	0	0	0	0	0	0	0	0	0	0
Kidney, exclude renal pelvis	T	50	0	1	0	0	2	0	1	0	4	6	7	5	8	7	3	3	2	0	0	0	0	1
	M	35	0	0	0	0	1	0	1	0	3	4	7	2	5	6	1	2	2	0	0	0	0	1
	F	15	0	1	0	0	1	0	0	0	1	2	0	3	3	1	2	1	0	0	0	0	0	0
Renal pelvis	T	15	0	0	0	0	0	0	0	0	1	2	2	1	2	1	2	2	2	0	0	0	0	0
	M	5	0	0	0	0	0	0	0	0	1	1	0	0	2	0	1	0	0	0	0	0	0	0
	F	10	0	0	0	0	0	0	0	0	0	1	2	1	0	1	1	2	2	0	0	0	0	0
Ureter	T	1	0	0	0	0	0	0	0	0	0	0	0	0	0	0	0	0	0	1	0	0	0	0
	M	0	0	0	0	0	0	0	0	0	0	0	0	0	0	0	0	0	0	0	0	0	0	0
	F	1	0	0	0	0	0	0	0	0	0	0	0	0	0	0	0	0	0	1	0	0	0	0

SITE / Age-Group		Under 1	1+	5+	10+	15+	20+	25+	30+	35+	40+	45+	50+	55+	60+	65+	70+	75+	80+	85+	90+	95+	Unknown	
Bladder	T	201	0	0	0	1	0	0	0	1	2	3	9	19	19	25	31	32	26	18	11	4	0	0
	M	147	0	0	0	1	0	0	0	0	2	1	6	15	14	22	22	23	19	13	7	2	0	0
	F	54	0	0	0	0	0	0	0	1	0	2	3	4	5	3	9	9	7	5	4	2	0	0
Other urinary organ	T	3	0	0	0	0	0	0	0	0	0	0	0	0	0	1	0	1	1	0	0	0	0	0
	M	2	0	0	0	0	0	0	0	0	0	0	0	0	0	1	0	0	1	0	0	0	0	0
	F	1	0	0	0	0	0	0	0	0	0	0	0	0	0	0	0	1	0	0	0	0	0	0
Eye and adnexa	T	37	0	16	0	1	0	0	0	1	1	1	1	3	2	3	3	1	1	2	1	0	0	0
	M	23	0	10	0	0	0	0	0	1	0	1	0	2	2	2	2	0	0	2	1	0	0	0
	F	14	0	6	0	1	0	0	0	0	1	0	1	1	0	1	1	1	1	0	0	0	0	0
Meninges	T	30	0	0	0	0	1	0	5	1	1	6	7	5	0	2	1	0	1	0	0	0	0	0
	M	9	0	0	0	0	0	0	3	1	0	1	1	1	0	2	0	0	0	0	0	0	0	0
	F	21	0	0	0	0	1	0	2	0	1	5	6	4	0	0	1	0	1	0	0	0	0	0
Brain	T	99	0	3	7	18	2	5	2	10	11	4	6	9	5	7	1	5	3	1	0	0	0	0
	M	48	0	0	5	10	1	1	1	5	6	2	3	3	4	3	0	2	2	0	0	0	0	0
	F	51	0	3	2	8	1	4	1	5	5	2	3	6	1	4	1	3	1	1	0	0	0	0
Other nervous system	T	1	0	0	0	0	0	0	0	0	0	0	0	1	0	0	0	0	0	0	0	0	0	0
	M	0	0	0	0	0	0	0	0	0	0	0	0	0	0	0	0	0	0	0	0	0	0	0
	F	1	0	0	0	0	0	0	0	0	0	0	0	1	0	0	0	0	0	0	0	0	0	0
Thyroid	T	181	0	0	0	0	2	9	12	13	9	34	18	18	18	15	10	14	7	1	1	0	0	0
	M	28	0	0	0	0	0	1	1	1	1	1	3	2	6	4	2	3	2	0	1	0	0	0
	F	153	0	0	0	0	2	8	11	12	8	33	15	16	12	11	8	11	5	1	0	0	0	0
Adrenal gland	T	3	0	1	0	1	0	0	0	0	0	0	0	0	1	0	0	0	0	0	0	0	0	0
	M	2	0	1	0	0	0	0	0	0	0	0	0	0	1	0	0	0	0	0	0	0	0	0
	F	1	0	0	0	1	0	0	0	0	0	0	0	0	0	0	0	0	0	0	0	0	0	0
Other endocrine gland	T	12	0	0	0	1	1	0	1	0	1	1	2	1	1	1	0	2	0	0	0	0	0	0
	M	7	0	0	0	1	1	0	1	0	1	1	0	0	0	1	0	1	0	0	0	0	0	0
	F	5	0	0	0	0	0	0	0	0	0	0	2	1	1	0	0	1	0	0	0	0	0	0
Unspecified site	T	259	0	2	1	1	2	7	3	8	10	20	34	40	22	27	32	20	15	13	1	1	0	0
	M	113	0	0	1	0	1	2	1	4	7	8	13	14	11	13	14	10	6	7	1	0	0	0
	F	146	0	2	0	1	1	5	2	4	3	12	21	26	11	14	18	10	9	6	0	1	0	0
Hodgkin's disease	T	25	0	1	0	2	0	3	2	1	4	0	3	0	3	1	2	1	1	1	0	0	0	0
	M	15	0	1	0	2	0	2	0	0	1	0	2	0	2	1	2	0	1	1	0	0	0	0
	F	10	0	0	0	0	0	1	2	1	3	0	1	0	1	0	0	1	0	0	0	0	0	0
Malignant lymphoma	T	197	0	1	0	4	4	8	6	14	10	14	17	13	16	20	24	17	13	9	5	2	0	0
	M	89	0	0	0	3	3	3	2	4	1	6	8	5	8	10	11	13	5	3	3	1	0	0
	F	108	0	1	0	1	1	5 ₂₅	4	10	9	8	9	8	8	10	13	4	8	6	2	1	0	0

SITE / Age-Group		Under 1	1+	5+	10+	15+	20+	25+	30+	35+	40+	45+	50+	55+	60+	65+	70+	75+	80+	85+	90+	95+	Unknown	
Multiple myeloma	T	69	0	0	0	0	3	0	3	2	3	4	10	8	8	3	12	5	5	2	1	0	0	
	M	30	0	0	0	0	2	0	1	1	2	1	5	3	4	2	5	1	2	1	0	0	0	
	F	39	0	0	0	0	1	0	2	1	1	3	5	5	4	1	7	4	3	1	1	0	0	
Acute lymphoblastic leukaemia	T	74	0	11	16	9	8	5	7	2	2	0	4	3	2	1	2	0	2	0	0	0	0	
	M	49	0	8	9	7	6	3	5	1	1	0	3	2	0	0	2	0	2	0	0	0	0	
	F	25	0	3	7	2	2	2	2	1	1	0	1	1	2	1	0	0	0	0	0	0	0	
Chronic lymphocytic leukaemia	T	24	0	0	0	0	0	0	0	1	0	4	0	3	4	3	4	4	1	0	0	0	0	
	M	12	0	0	0	0	0	0	0	1	0	2	0	0	2	3	2	2	0	0	0	0	0	
	F	12	0	0	0	0	0	0	0	0	0	2	0	3	2	0	2	2	1	0	0	0	0	
Acute myeloid leukaemia	T	52	0	3	2	4	0	4	3	4	3	4	4	7	2	3	2	5	2	0	0	0	0	
	M	17	0	1	0	0	0	2	1	3	1	2	0	1	0	3	0	1	2	0	0	0	0	
	F	35	0	2	2	4	0	2	2	1	2	2	4	6	2	0	2	4	0	0	0	0	0	
Chronic myeloid leukaemia	T	46	0	1	0	0	1	3	5	5	7	5	3	3	4	0	2	3	1	3	0	0	0	
	M	23	0	1	0	0	0	1	4	0	4	4	1	2	1	0	1	2	1	1	0	0	0	
	F	23	0	0	0	0	1	2	1	5	3	1	2	1	3	0	1	1	0	2	0	0	0	
Myeloid leukaemia, unspecified	T	4	0	0	0	0	0	0	0	2	0	0	1	0	0	0	0	1	0	0	0	0	0	
	M	1	0	0	0	0	0	0	0	0	0	0	0	0	0	0	0	1	0	0	0	0	0	
	F	3	0	0	0	0	0	0	0	2	0	0	1	0	0	0	0	0	0	0	0	0	0	
Acute monocytic leukaemia	T	4	0	0	0	0	0	0	0	1	0	1	0	0	1	0	0	0	1	0	0	0	0	
	M	2	0	0	0	0	0	0	0	0	0	0	0	0	1	0	0	0	1	0	0	0	0	
	F	2	0	0	0	0	0	0	0	1	0	1	0	0	0	0	0	0	0	0	0	0	0	
Leukaemia of unspecified type	T	34	0	5	2	2	1	3	2	3	2	6	2	1	0	0	1	2	0	0	0	1	0	1
	M	16	0	4	1	1	1	1	1	0	1	3	1	1	0	0	0	1	0	0	0	0	0	0
	F	18	0	1	1	1	0	2	1	3	1	3	1	0	0	0	1	1	0	0	0	1	0	1

TABLE IX**THE COMMON SITE OF MALIGNANCY BY PERCENTAGE**

Site	PERCENTAGE				
	2002	2003	2004	2005	2006
Total Cases	4293	4663	4940	5720	6377
Breast	11.95	7.72	14.45	13.67	13.22
Liver	5.78	4.59	6.05	7.94	9.75
Cervix	13.35	13.25	10.22	8.37	8.20
Lung	7.34	6.30	7.57	7.41	8.15
Colon-rectum	11.95	7.72	7.51	7.81	7.62
Prostate	3.82	4.59	4.68	5.00	7.40
Leukaemia	5.31	6.30	5.69	5.03	3.69
Lymphoma	6.76	6.46	5.55	5.72	3.48
Thyroid	1.89	2.19	2.57	3.32	2.84
Oral cavity	3.42	3.71	3.12	3.06	2.59

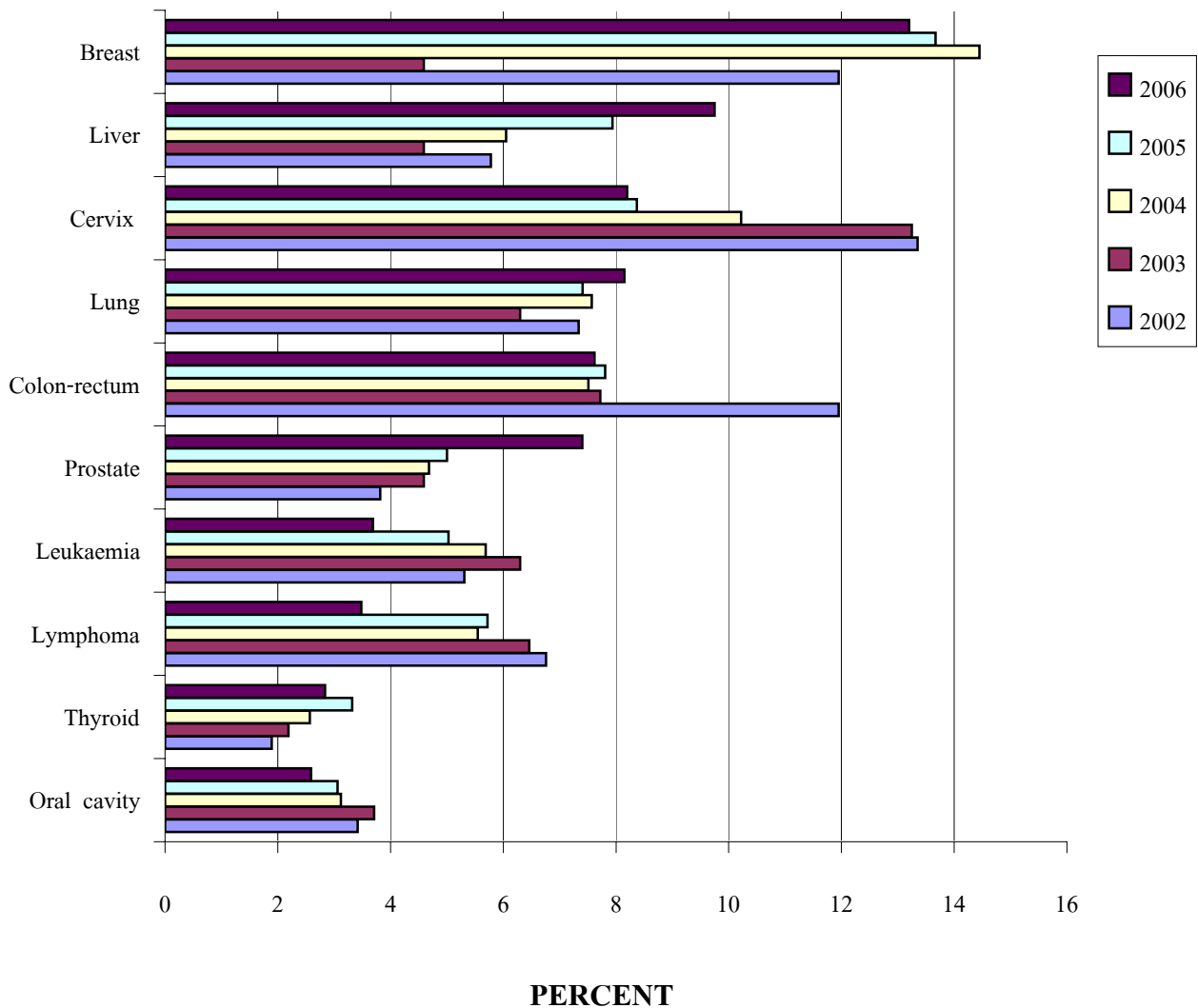
TABLE IX.I**THE COMMON SITE OF MALIGNANCY BY PERCENT 2002 - 2005**

TABLE X
THE COMMON MALIGNANCY IN MALE

Site	Male	%
All Sites	2948	100.00
Prostate	472	16.01
Liver	453	15.37
Lung	337	11.43
Colon-Rectum	240	8.14
Bladder	147	4.99
Nasopharynx	118	4.00
Leukaemia	118	4.00
Lymphoma	104	3.53
Larynx	97	3.29
Oral cavity	87	2.95

TABLE X.I
THE COMMON MALIGNANCY IN MALE

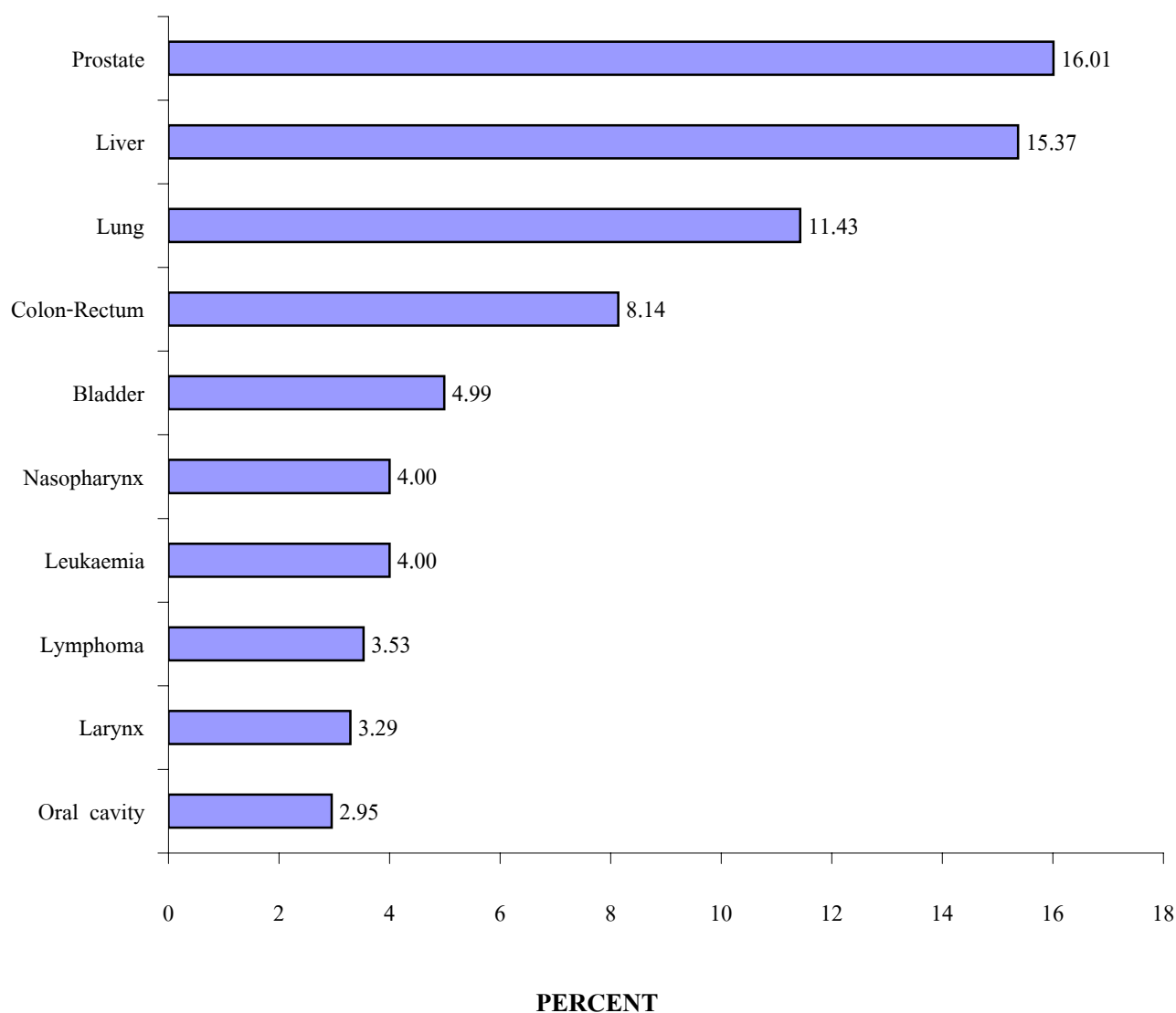


TABLE XI
THE COMMON MALIGNANCY IN FEMALE

Site	Female	%
All Sites	3429	100.00
Breast	841	24.53
Cervix	523	15.25
Colon-rectum	246	7.17
Lung	183	5.34
Liver	169	4.93
Thyroid	153	4.46
Lymphoma	118	3.44
Leukaemia	117	3.41
Ovary	115	3.35
Skin	84	2.45

TABLE XI.I
THE COMM MALIGNANCY IN FEMALE

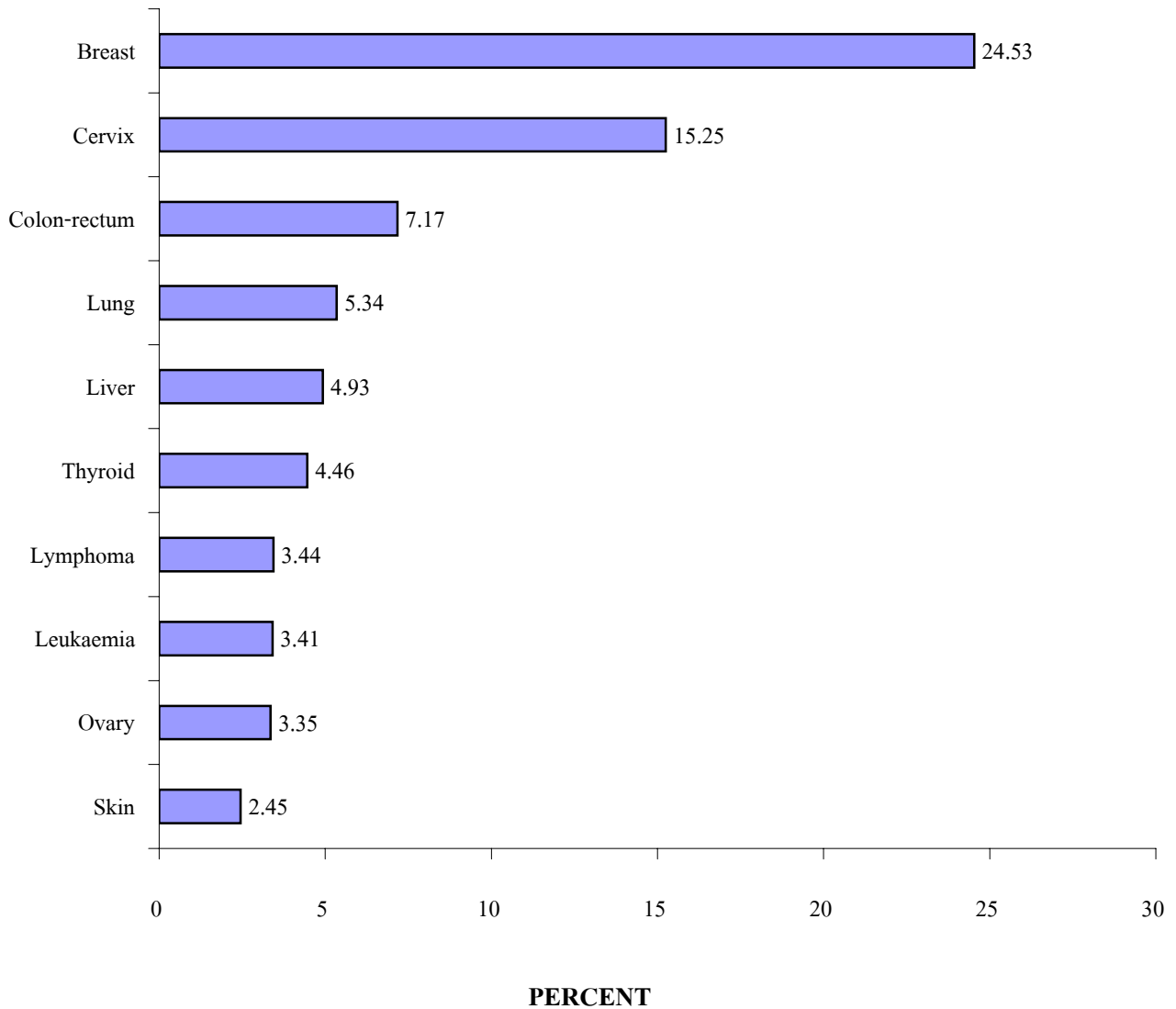


TABLE XII
NUMBER OF CASES OF MALIGNANCY BY PROVINCE

PROVINCE	MALE	FEMALE	TOTAL
ALL PROVINCE	2948	3429	6377
Amnartjarearn	6	3	9
Angtong	10	21	31
Ayuthaya	44	58	102
Bangkok	1088	1288	2376
Buriram	28	19	47
Cha-choengsao	25	22	47
Chainat	16	14	30
Chaiyaphum	11	18	29
Chantaburi	22	12	34
Chiengmai	13	10	23
Chiengrai	11	17	28
Chonburi	48	40	88
Chumphon	48	50	98
Kalasin	8	7	15
Kamphaengphet	17	15	32
Kanchanaburi	52	69	121
Khonkaen	13	14	27
Krabi	9	6	15
Lampang	5	3	8
Loei	4	4	8
Lopburi	22	21	43
Lumphun	1	2	3
Maehongsorn	2	0	2
Mahasarakham	4	9	13
Mukdaharn	3	6	9
Nakornnayok	9	6	15
Nakornphanom	7	10	17
Nakornphathom	187	223	410
Nakornrajchsima	36	40	76
Nakornsawan	36	36	72
Nakornsrithamaraj	39	38	77
Nan	4	3	7
Narathiwat	5	4	9
Nhongsbualumpoo	0	5	5
Nhongkhai	4	6	10
Nonthaburi	162	188	350
Pang-Nga	10	9	19
Pathani	4	1	5
Payao	4	6	10
Phattalung	3	5	8
Phetburi	64	58	122
Phetchaboon	32	18	50
Phrae	7	7	14
Phuket	8	11	19
Pichit	23	13	36

PROVINCE	MALE	FEMALE	TOTAL
ALL PROVINCE	2948	3429	6377
Amnartjarearn	6	3	9
Pisanulok	10	12	22
Prachinburi	11	11	22
Prachuabkirikhan	36	70	106
Prathumthani	39	55	94
Rajburi	84	150	234
Ranong	8	6	14
Rayong	16	19	35
Roi-Et	19	22	41
Sakolnakhorn	9	6	15
Samutprakran	63	69	132
Samutsakhorn	56	78	134
Samutsongkram	22	21	43
Saraburi	17	19	36
Satun	0	2	2
Singburi	12	14	26
Songkhla	12	11	23
Srakaew	4	6	10
Srisaket	22	26	48
Sukhothai	11	17	28
Suphanburi	78	97	175
Surajthani	24	25	49
Surin	14	24	38
Tak	3	11	14
Trang	12	13	25
Trat	12	9	21
Ubon	22	20	42
Udornthani	13	6	19
Utharadit	7	9	16
Yala	1	4	5
Yasothon	5	6	11

Not mention chanvat 328 records

TABLE XIII
OCCUPATION

OCCUPATION	NORTH	N-EAST	CENTRAL	SOUTH	TOTAL
Agriculturalist	3	0	7	1	11
Fisherman	0	0	1	0	1
House wife	74	129	1696	108	2007
Businessm,Trade	16	46	516	39	617
Government official	47	67	708	61	883
Plantation,Farmer	23	131	235	69	458
Clergyman,Priest	1	3	27	4	35
Employee,Labour	65	109	1217	53	1444
Unemploy	13	19	137	19	188
Not record	0	0	0	0	0
TOTAL	242	504	4544	354	5644

Not Record Both Occupation And Province = 733

TABLE XIV
MALIGNANT LYMPHOMA BY SITE

SITE	MALE	FEMALE	TOTAL
ALL SITE	126	132	258
Tongue	1	0	1
Salivary gland	4	0	4
Tonsil	3	3	6
Nasopharynx	3	4	7
Stomach	3	1	4
Small bowel	2	0	2
Accessory sinus	1	1	2
Lung	1	1	2
Mediastinum	0	1	1
Prostate	1	0	1
Eye and adnexa	0	1	1
Brain	3	1	4
Ill define site	0	1	1
Lymph node	104	118	222

TEBLE XV
MALIGNANT LYMPHOMA BY AGE

AGE	MALE		FEMALE		TOTAL	
	n	%	n	%	n	%
ALL AGE	126	100.00	132	100.00	258	100.00
Unkown	0	0.00	0	0.00	0	0.00
1+	1	0.79	2	1.52	3	1.16
5+	1	0.79	0	0.00	1	0.39
10+	5	3.97	1	0.76	6	2.33
15+	3	2.38	1	0.76	4	1.55
20+	5	3.97	7	5.30	12	4.65
25+	2	1.59	7	5.30	9	3.49
30+	5	3.97	11	8.33	16	6.20
35+	3	2.38	13	9.85	16	6.20
40+	8	6.35	8	6.06	16	6.20
45+	12	9.52	11	8.33	23	8.91
50+	6	4.76	9	6.82	15	5.81
55+	14	11.11	10	7.58	24	9.30
60+	15	11.90	11	8.33	26	10.08
65+	14	11.11	15	11.36	29	11.24
70+	15	11.90	7	5.30	22	8.53
75+	7	5.56	10	7.58	17	6.59
80+	5	3.97	6	4.55	11	4.26
85+	4	3.17	2	1.52	6	2.33
90+	1	0.79	1	0.76	2	0.78
95+	0	0.00	0	0.00	0	0.00

TABLE XV.I
MALIGNANT LYMPHOMA BY AGE

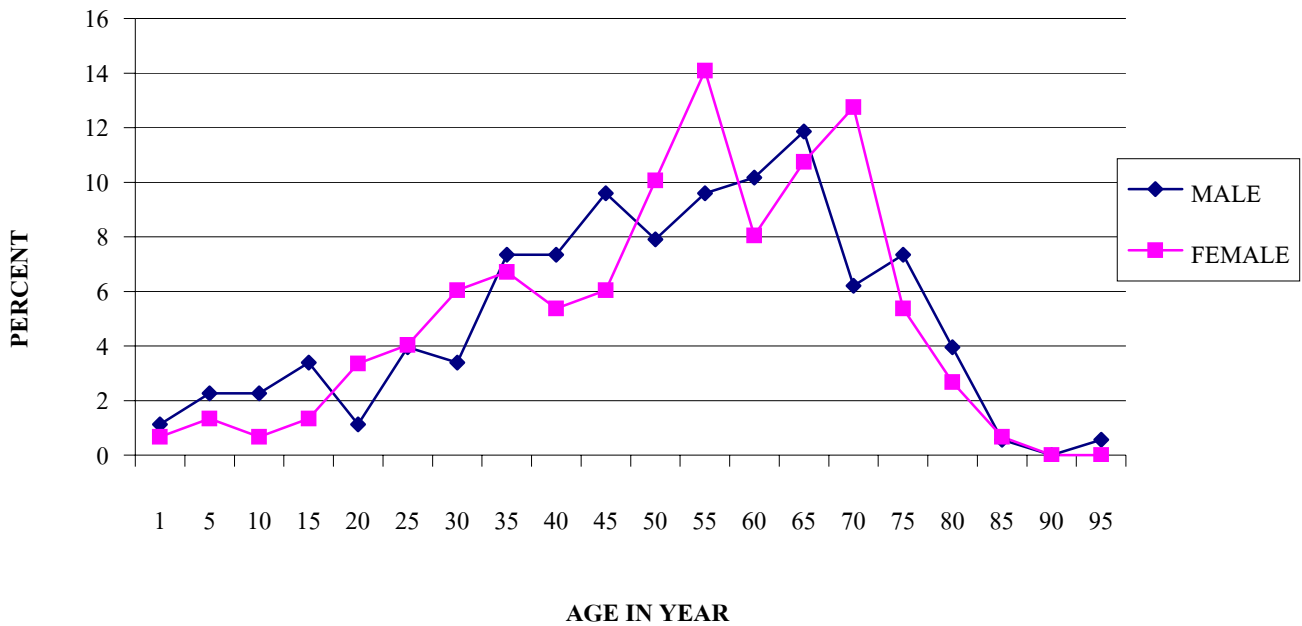


TABLE XVI
CLINICAL STAGE OF CERVIX

STAGE	MALE	%	FEMALE	%	TOTAL	%
Stage not record	0	0.00	308	58.89	308	58.89
Stage 1	0	0.00	5	0.96	5	0.96
Stage 1A	0	0.00	25	4.78	25	4.78
Stage 1B	0	0.00	26	4.97	26	4.97
Stage 2	0	0.00	6	1.15	6	1.15
Stage 2A	0	0.00	30	5.74	30	5.74
Stage 2B	0	0.00	38	7.27	38	7.27
Stage 3	0	0.00	16	3.06	16	3.06
Stage 3A	0	0.00	7	1.34	7	1.34
Stage 3B	0	0.00	47	8.99	47	8.99
Stage 4	0	0.00	4	0.76	4	0.76
Stage 4A	0	0.00	6	1.15	6	1.15
Stage 4B	0	0.00	5	0.96	5	0.96
TOTAL	0	0.00	523	100.00	523	100.00

TABLE XVI
CLINICAL STAGE OF CERVIX

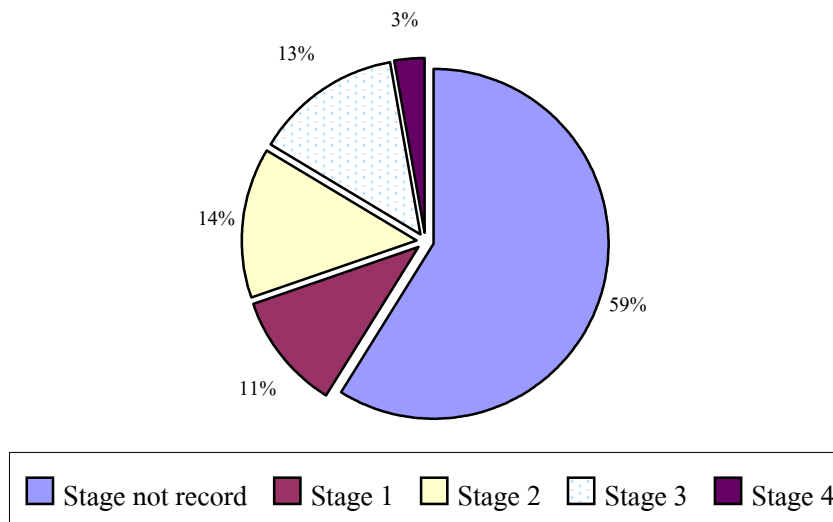


TABLE XVII
CLINICAL STAGE OF OVARY

STAGE	MALE	%	FEMALE	%	TOTAL	%
Stage not record	0	0.00	90	78.26	90	78.26
Stage 1	0	0.00	5	4.35	5	4.35
Stage 1C	0	0.00	5	4.35	5	4.35
Stage 2	0	0.00	5	4.35	5	4.35
Stage 3	0	0.00	2	1.74	2	1.74
Stage 3B	0	0.00	2	1.74	2	1.74
Stage 3C	0	0.00	2	1.74	2	1.74
Stage 4	0	0.00	4	3.48	4	3.48
TOTAL	0	0.00	115	100.00	115	100.00

TABLE XVII.I
CLINICAL STAGE OF OVARY

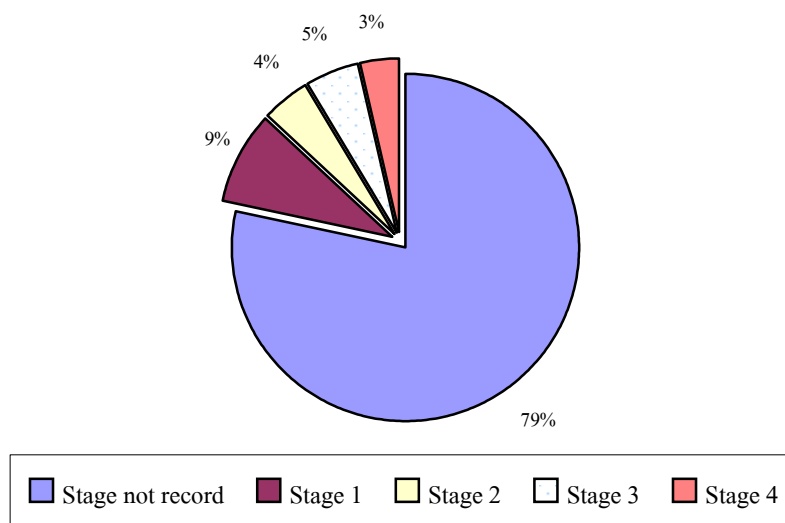
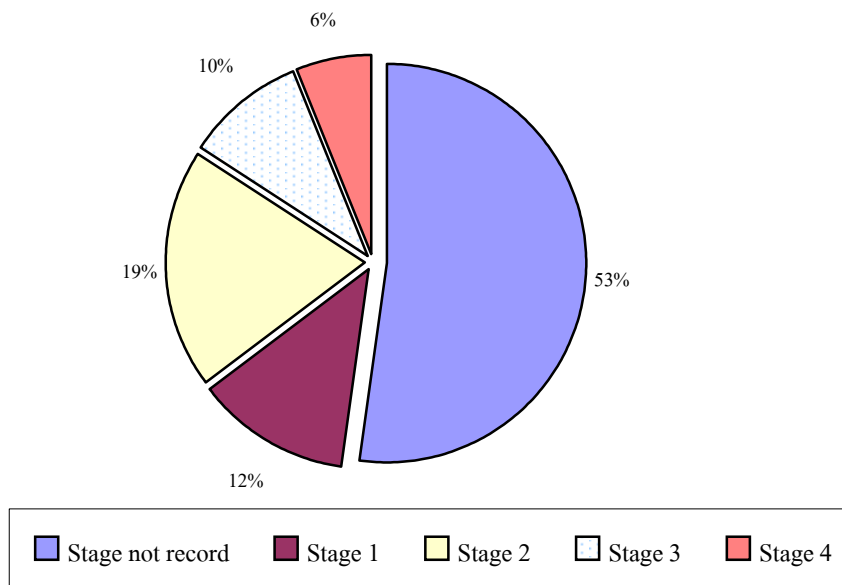


TABLE XVIII
CLINICAL STAGE OF BREAST

STAGE	MALE	%	FEMALE	%	TOTAL	%
Stage not record	2	100.00	439	52.20	441	52.31
Stage 1	0	0.00	104	12.37	104	12.34
Stage 2	0	0.00	60	7.13	60	7.12
Stage 2A	0	0.00	50	5.95	50	5.93
Stage 2B	0	0.00	54	6.42	54	6.41
Stage 3	0	0.00	20	2.38	20	2.37
Stage 3A	0	0.00	31	3.69	31	3.68
Stage 3B	0	0.00	32	3.80	32	3.80
Stage 4	0	0.00	51	6.06	51	6.05
TOTAL	2	100.00	841	100.00	843	100.00

TABLE XVIII.I
CLINICAL STAGE OF BREAST



CANCER BY REGION

2006

