

TUMOUR REGISTRY

SIRIRAJ CANCER CENTER



STATISTICAL REPORT

2007

FACULTY OF MEDICINE SIRIRAJ HOSPITAL

MAHIDOL UNIVERSITY

ISSN 00857-3840

TUMOUR REGISTRY

SIRIRAJ CANCER CENTER



STATISTICAL REPORT

2007

FACULTY OF MEDICINE SIRIRAJ HOSPITAL

MAHIDOL UNIVERSITY

ISSN 00857-3840

THE SIRIRAJ CANCER CENTER

Tumour registry 2007

Annual report 2007

Editor

Adune Ratanawichitrasin

Circulation

Srijantra Assawasongsilp

Published by

Siriraj Cancer Center

Siriraj Hospital

2 Pran-nok Road

Bangkok 10700

THAILAND

Tel: 66 0 2419 4471-2

Fax: 66 0 2412 9169

Table of contents

Number of patients	1
Diagnosis	1
Malignancy by age and sex	1
Primary site	3
Pathology according to site	7
The ten leading sites	18
Malignant neoplasm in childhood	19
Primary sites as to age and sex	20
Common site of malignancy	30
Common site in male	31
Common site in female	32
Malignancy by province	33
Malignancy by occupation	35
Malignant lymphoma by site	35
Malignant lymphoma by age	36
Cancer by region	37

Introduction

This Statistical report 2007 is an official report of hospital-based cancer incidence from Siriraj hospital. It is the 39th annual cancer statistics which regularly published since 1969 responsible by Siriraj Cancer Center, Faculty of Medicine Siriraj Hospital, Mahidol University.

Siriraj Hospital, the first western medical center in Thailand which founded in 1888, is a university hospital that has 29 departments and 4 institutes performed general clinical services, medical educations and researches. There are 172,876 new OPD cases, 2,733,578 visits and 77,905 inpatient-admissions in the year 2007. The total number of cancer in Siriraj Hospital is 4.16% (7,195 new cancer cases). This hospital-based cancer incidence has fluctuated trends in the last few years due to the changes in health care policy of cases referring system in public sector, and the popularity of Siriraj hospital that has been voted as the most trusted hospital in the year 2007-2008. However, the total number of new cancer cases was increased. The distribution of cancer incidence in this registry may not represent the figure of the whole country because of the shift of patients due to new technology of treatments in some types of cancers such as prostate cancer and breast cancer.

Data processing of cancer registry was performed by collecting in and out patients from ICD coding system, rechecked with Siriraj cancer registry database to identify new cases, then validated with medical records and finally proved by senior medical consultant. Due to the re-organize of registry processes in Siriraj Cancer Center to improve work flow efficiency, we have collected an additional significant number of unrecognized new cases from the recent year.

I would like to acknowledge the kindly supports from The Medical Record Services, Medical Information Technology Services, Departments of Pathology, Radiology, Obstetrics and Gynecology, Surgery, Medicine, Orthopedics, Oto-rhino-laryngology, Ophthalmology and Pediatrics, as well as Siriraj Cancer Center organizing committees and all staffs in Siriraj Cancer Center who worked hard to make this Statistical report 2007 complete and valid.



Associate Professor Adune Ratanawichitrasin, MD

Chairman: Siriraj Cancer Center

Faculty of Medicine Siriraj Hospital

Mahidol University

THE COMMITTEE OF TUMOUR REGISTRY

PIRAT TAPMONGKOL	M.D.	CONSULTANT
KRIT BHOTHISUWAN	M.D.	CONSULTANT
VISOOT VOOTIPRUX	M.D.	CONSULTANT
SUPATRA SANGRUCHI	M.D.	CONSULTANT
WILAIORN BHOTHISUWAN	M.D.	CONSULTANT
PIROJ SINLARAT	M.D.	CONSULTANT
TEERAWAT KULTHANAN	M.D.	CHAIRMAN
ADUNE RATANAWICHITRASIN	M.D.	
SURIN THANAPIPATSIRI	M.D.	
NIRUN VANPRAPAR	M.D.	
APICHARY SINGCALAYANIJA	M.D.	
PUNKAE MAHAISAVARIYA	M.D.	
TUMTIP SANGRUCHI	M.D.	
PITTAYAPOOM PATTARANUTOPORN	M.D.	
UNGKAB PRAKANRATTANA	M.D.	
PRASERT ASSANTACHAI	M.D.	
SUPAKORN ROJANANIN	M.D.	
PANUPAN SONGCHAROEN	M.D.	
CHANCHAI VANTANASIRI	M.D.	
CHOAKCHAI METHEETRAIRUT	M.D.	
UDOM KACHINTORN	M.D.	
NOPPHOL PAUSAWASDI	Ph.D.	
WILAIORN BOONYARIDDH	R.N.	
APICHAT ASAVAMONGKOLKUL	M.D.	
CHAIYOD THIRAPAKAWONG	M.D.	
PREYANUJ YAMWONG	M.D.	
CHEERASOOK CHONGKOLWATANA	M.D.	
SUNAI LEEWANSANGTONG	M.D.	
VICHIEEN SRIMUNINNIMIT	M.D.	
KANCHANA AMORNPICHETKUL	M.D.	
JAMSAK CHAIKUNA	M.D.	
NAN SUNTORNPONG	M.D.	
KLEEBASABAI SANPAKIT	M.D.	
CHARUWAN AKEWANLOP	M.D.	
WORAMIN RIANSUWAN	M.D.	
RAPIN PHIMOLSARNTI	M.D.	
SUWANIT THERASAKVICHYA	M.D.	SECRETARY
SOMSRI RATANAWICHITRASIN	M.D.	ASSISTANT SECRETARY

THE SUBCOMMITTEE OF TUMOUR REGISTRY

CHEERASOOK CHONGKOLWATANA	SUWANIT THERASAKVICHYA
VICHIEEN SRIMUNINNIMIT	NAN SUNTORNPONG
ADUNE RATANAWICHITRASIN	KLEEBASABAI SANPAKIT
PREYANUJ YAMWONG	CHARUWAN AKEWANLOP
APICHAT ASAVAMONGKOLKUL	WORAMIN RIANSUWAN
SUNAI LEEWANSANGTONG	RAPIN PHIMOLSARNTI
KANCHANA AMORNPICHETKUL	SOMSRI RATANAWICHITRASIN
JAMSAK CHAIKUNA	VISOOT VOOTIPRUX

OFFICE STAFF

SRIJANTRA ASSAWASONGSILP	SIRIPORN TIMPASERT
PRANEE MAHAMADSOLAEH	SUWICHAYA KHONGSOOK
THANIT HIRANYAKUPT	KANDA PUTTAINSORN
MATTANA MOUANGNGAM	THAPANEE SAE-JANG
UMAPORN EAUGUL-ATICHAT	

2007

TABLE I
NUMBER OF PATIENT

Type of patient	No.of Cases
Total No. of Out Patients	2,733,578
Total No. of New Patients	172,876
Total No. of New Patients with Malignancy	7,195

The Cancer case are 4.16% of all new patients

TABLE II
DIAGNOSIS

Diagnosed by	Number	Percentage
Histological proved	6,692	93.00
Clinical & X-ray	503	6.99
Total	7,195	100.00

TABLE III
NUMBER OF MALIGNANT NEOPLASM BY AGE AND SEX

AGE-group	No. of Cases					
	MALE		FEMALE		TOTAL	
	No	%	No	%	No	%
ALL AGE	3,370	100.00	3,825	100.00	7,195	100.00
NOT RECORD	0	0	0	0	0	0
1+	37	1.10	33	0.86	70	0.97
5+	19	0.56	19	0.50	38	0.53
10+	30	0.89	15	0.39	45	0.63
15+	39	1.16	28	0.73	67	0.93
20+	32	0.95	38	0.99	70	0.97
25+	44	1.31	72	1.88	116	1.61
30+	68	2.02	132	3.45	200	2.78
35+	102	3.03	240	6.27	342	4.75
40+	154	4.57	383	10.01	537	7.46
45+	269	7.98	476	12.44	745	10.35
50+	361	10.71	524	13.70	885	12.30
55+	385	11.42	482	12.60	867	12.05
60+	405	12.02	334	8.73	739	10.27
65+	477	14.15	373	9.75	850	11.81
70+	404	11.99	270	7.06	674	9.37
75+	322	9.55	205	5.36	527	7.32
80+	150	4.45	111	2.90	261	3.63
85+	53	1.57	60	1.57	113	1.57
90+	16	0.47	25	0.65	41	0.57
95+	3	0.09	5	0.13	8	0.11

TABLE III.I
NUMBER OF MALIGNANT NEOPLASM BY AGE

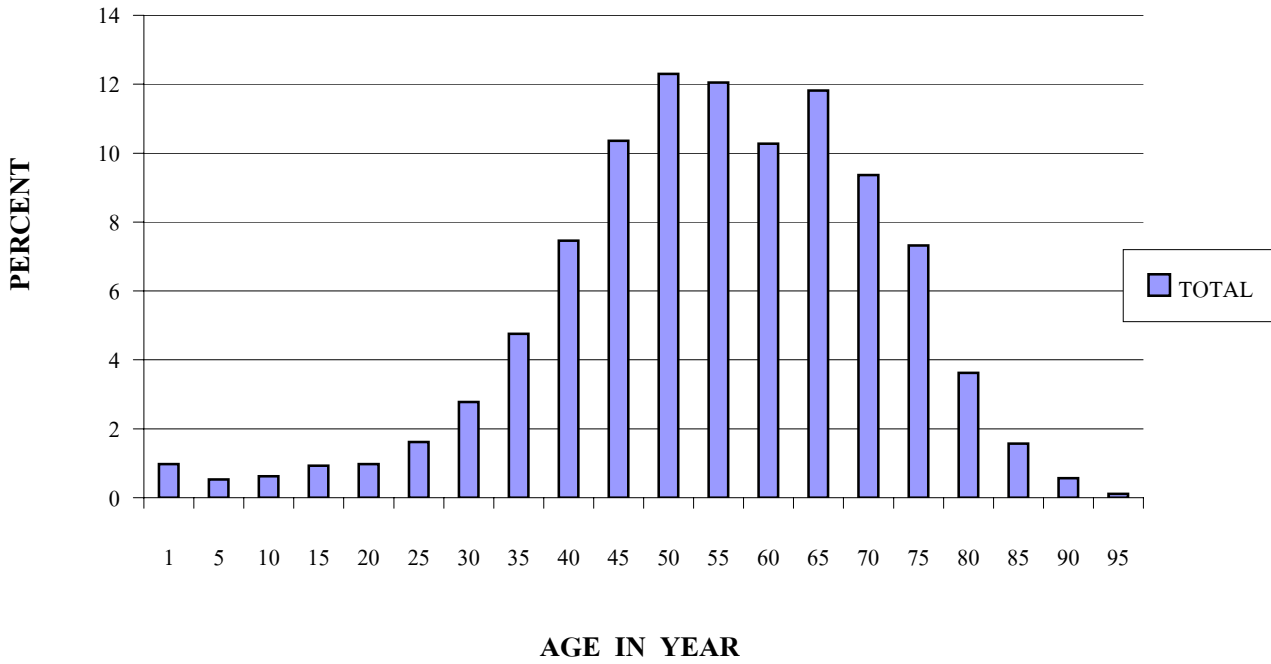


TABLE III.II
NUMBER OF MALIGNANT NEOPLASM BY AGE

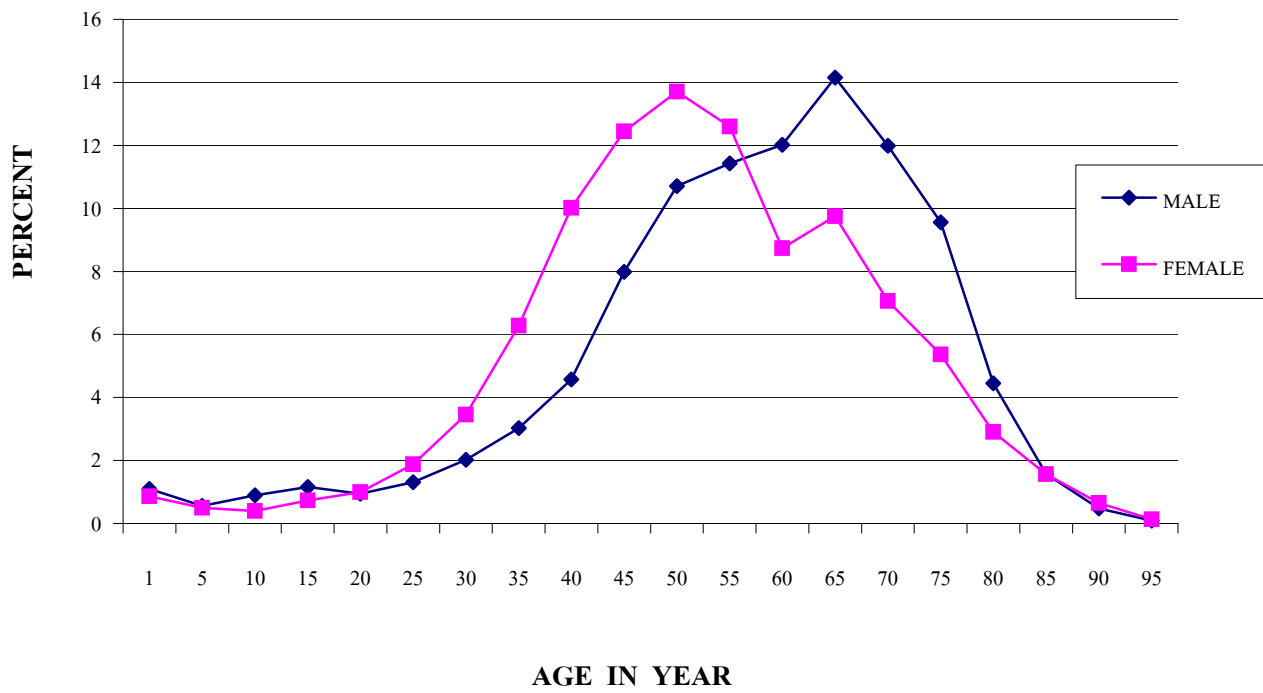


TABLE IV
PRIMARY SITE

CODE	SITE	No. of Cases			%
		MALE	FEMALE	TOTAL	
	GRAND TOTAL	3,370	3,825	7,195	100.00
C00.0-C14.0	MALIGNANT NEOPLASM OF LIP,ORAL CAVITY AND PHARYNX	360	162	522	7.26
C00.0	UPPER LIP	2	3	5	0.07
C00.1	LOWER LIP	3	13	16	0.22
C00.5	INNER SURFACE UNSPECIFIED	0	1	1	0.01
C00.9	LIP UNSPECIFIED	0	2	2	0.03
C01	BASE OF TONGUE	29	6	35	0.49
C02.9	TONGUE UNSPECIFIED	55	42	97	1.35
C03.1	GUM LOWER	4	3	7	0.10
C03.9	GUM UNSPECIFIED	4	1	5	0.07
C04.9	FLOOR OF MOUTH UNSPECIFIED	18	8	26	0.36
C05.0	HARD PALATE	5	2	7	0.10
C05.1	SOFT PALATE	11	3	14	0.19
C06.0	CHEEK MUCOSA	9	16	25	0.35
C06.2	RETROMOLAR AREA	3	0	3	0.04
C07	PAROTID GLAND	15	11	26	0.36
C08.0	SUBMANDIBULAR GLAND	1	2	3	0.04
C08.9	SALIVARY UNSPECIFIED	3	3	6	0.08
C09.9	TONSIL UNSPECIFIED	31	7	38	0.53
C10.0	VALLECULAR	1	0	1	0.01
C10.9	OROPHARYNX UNSPECIFIED	7	1	8	0.11
C11.9	NASOPHARYNX UNSPECIFIED	111	34	145	2.02
C12	PYRIFORM SINUS	21	0	21	0.29
C13.9	HYPOPHARYNX UNSPECIFIED	17	2	19	0.26
C14.0	PHARYNX UNSPECIFIED	8	1	9	0.13
C14.8	ORAL CAVITY UNSPECIFIED	2	1	3	0.04
C15-C26	MALIGNANT NEOPLASM OF DIGESTIVE ORGANS	1,011	632	1,643	22.84
C15.3	ESOPHAGUS UPPER 1/3	2	0	2	0.03
C15.4	ESOPHAGUS MIDDLE 1/3	2	3	5	0.07
C15.5	ESOPHAGUS LOWER 1/3	6	1	7	0.10
C15.9	ESOPHAGUS UNSPECIFIED	84	19	103	1.43
C16.0	STOMACH CARDIA	2	3	5	0.07
C16.9	STOMACH UNSPECIFIED	50	53	103	1.43
C17.0	DUODENUM	7	7	14	0.19
C17.1	JEJUNUM	4	2	6	0.08
C17.2	ILEUM	3	5	8	0.11
C18.0	CAECUM	12	13	25	0.35
C18.1	APPENDIX	4	1	5	0.07
C18.2	COLON ASCENDING	12	16	28	0.39
C18.4	COLON TRANSVERSE	10	15	25	0.35
C18.6	COLON DESCENDING	15	15	30	0.42
C18.7	SIGMOID COLON	58	50	108	1.50
C18.9	COLON UNSPECIFIED	47	48	95	1.32
C19	RECTOSIGMOID	20	25	45	0.63
C20	RECTUM	126	107	233	3.24
C21.0	ANUS UNSPECIFIED	1	0	1	0.01
C21.1	ANAL CANAL	2	4	6	0.08

TABLE IV (cont.)**PRIMARY SITE**

CODE	SITE	No. of Cases			%
		MALE	FEMALE	TOTAL	
C22.0	LIVER CELL CA	357	110	467	6.49
C22.1	CHOLANGIO CARCINOMA	102	52	154	2.14
C22.2	HEPATOBLASTOMA	2	1	3	0.04
C22.9	LIVER UNSPECIFIED	16	15	31	0.43
C23	GALL BLADDER	12	9	21	0.29
C24.0	BILE DUCT	5	1	6	0.08
C24.1	AMPULAR	14	11	25	0.35
C25.0	PANCREAS HEAD	18	19	37	0.51
C25.1	PANCREAS BODY	1	2	3	0.04
C25.2	PANCREAS TAIL	1	0	1	0.01
C25.9	PANCREAS UNSPECIFIED	16	25	41	0.57
C30-C39	MALIGNANT NEOPLASM OF RESPIRATORY AND INTRATHORACIC ORGAN	505	214	719	9.99
C30.0	NASAL CAVITY	16	6	22	0.31
C31.0	MAXILLARY SINUS	5	3	8	0.11
C32.0	GLOTTIS	36	6	42	0.58
C32.1	SUPRAGLOTTIS	19	4	23	0.32
C32.2	SUBGLOTTIS	1	0	1	0.01
C32.8	LARYNX OVERLAP	3	0	3	0.04
C32.9	LARYNX UNSPECIFIED	23	0	23	0.32
C33	TRACHEA	1	1	2	0.03
C34.1	LUNG UPPER LOBE	47	15	62	0.86
C34.2	LUNG MIDDLE LOBE	2	2	4	0.06
C34.3	LUNG LOWER LOBE	11	15	26	0.36
C34.8	LUNG OVERLAP	1	1	2	0.03
C34.9	LUNG UNSPECIFIED	333	155	488	6.78
C37	THYMUS	2	5	7	0.10
C38.3	MEDIASTINUM UNSPECIFIED	5	1	6	0.08
C40-C50	MALIGNANT NEOPLASM OF BONE, CARTILAGE, SKIN, SOFT TISSUE, BREAST	189	1,199	1,388	19.29
C40.0	LONG BONE UPPER LIMB	2	1	3	0.04
C40.1	SHORT BONE UPPER LIMB	0	3	3	0.04
C40.2	LONG BONE LOWER LIMB	17	11	28	0.39
C40.3	SHORT BONE LOWER LIMB	1	0	1	0.01
C40.9	BONE OF LIMB UNSPECIFIED	6	3	9	0.13
C41.0	BONE OF SKULL AND HEAD	0	1	1	0.01
C41.1	MANDIBLE	1	0	1	0.01
C41.2	VERTIBRAL COLUMN	1	0	1	0.01
C41.4	PELVIC, SACRUM, COCCYX BONE	3	2	5	0.07
C41.9	BONE, CARTILAGE UNSPECIFIED	5	5	10	0.14
C43.4	MELANOMA SCALP	1	0	1	0.01
C43.5	MELANOMA TRUNK	2	1	3	0.04
C43.7	MELANOMA LOWER LIMB	6	2	8	0.11
C43.9	MELANOMA SKIN UNSPECIFIED	5	7	12	0.17
C44.0	SKIN OF LIP	2	4	6	0.08
C44.1	EYELID	8	14	22	0.31
C44.2	EXTERNAL EAR	11	4	15	0.21

TABLE IV (cont.)**PRIMARY SITE**

CODE	SITE	No. of Cases			%
		MALE	FEMALE	TOTAL	
C44.3	SKIN OF FACE	25	34	59	0.82
C44.4	SKIN OF SCALP	7	10	17	0.24
C44.5	SKIN OF TRUNK	4	8	12	0.17
C44.6	SKIN OF UPPER LIMB	3	2	5	0.07
C44.7	SKIN OF LOWER LIMB	15	5	20	0.28
C44.9	SKIN UNSPECIFIED	11	15	26	0.36
C46.9	KAPOSI SARCOMA UNSPECIFIED	1	0	1	0.01
C47.9	AUTONOMIC NERVOUS SYSTEM	0	11	11	0.15
C48.0	RETROPERITONIUM	1	3	4	0.06
C49.0	CONNECTIVE AND SOFT TISSUE OF HEAD, FACE AND NECK	1	3	4	0.06
C49.1	SOFT TISSUE UPPER LIMB	3	5	8	0.11
C49.2	SOFT TISSUE LOWER LIMB	13	11	24	0.33
C49.3	SOFT TISSUE THORAX	0	1	1	0.01
C49.5	SOFT TISSUE PELVIS	1	3	4	0.06
C49.6	SOFT TISSUE TRUNK	1	0	1	0.01
C49.9	CONNECTIVE AND SOFT TISSUE, UNSPECIFIED	26	26	52	0.72
C50.9	BREAST UNSPECIFIED	6	1,004	1,010	14.04
C51-C68	MALIGNANT NEOPLASM OF GENITAL AND URINARY TRACT	728	1,000	1,728	24.02
C51.9	VULVA UNSPECIFIED	0	12	12	0.17
C52	VAGINA	0	14	14	0.19
C53.0	ENDOCERVIX	0	22	22	0.31
C53.1	EXOCERVIX	0	17	17	0.24
C53.9	CERVIX UNSPECIFIED	0	507	507	7.05
C54.1	ENDOMETRIUM	0	148	148	2.06
C54.2	MYOMETRIUM	0	3	3	0.04
C55	UTERUS UNSPECIFIED	0	6	6	0.08
C56	OVARY	0	177	177	2.46
C57.0	FOLLOPIAN TUBE	0	1	1	0.01
C58	PLACENTA	0	3	3	0.04
C60.9	PENIS UNSPECIFIED	17	0	17	0.24
C61	PROSTATE	525	0	525	7.30
C62.9	TESTIS UNSPECIFIED	5	0	5	0.07
C64	KIDNEY	36	33	69	0.96
C65	RENAL PELVIS	10	5	15	0.21
C66	URETER	3	5	8	0.11
C67.9	BLADDER UNSPECIFIED	132	45	177	2.46
C68.0	URETHRA	0	2	2	0.03
C69-C75	MALIGNANT NEOPLASM OF EYE, BRAIN, SPINAL CORD AND ENDOCRINE GLAND	129	267	396	5.50
C69.0	CONJUNCTIVA	4	2	6	0.08
C69.2	RETINA	8	10	18	0.25
C69.5	LACRIMAL GLAND	1	1	2	0.03
C69.6	ORBIT	5	2	7	0.10
C69.9	EYE UNSPECIFIED	0	1	1	0.01
C70.0	CEREBRAL MENING	3	8	11	0.15
C70.9	MENINGES UNSPECIFIED	0	7	7	0.10
C71.0	CEREBRUM	3	1	4	0.06

TABLE IV (cont.)**PRIMARY SITE**

CODE	SITE	No. of Cases			%
		MALE	FEMALE	TOTAL	
C71.1	FRONTAL LOBE	6	2	8	0.11
C71.2	TEMPORAL LOBE	2	4	6	0.08
C71.3	PARIETAL LOBE	4	1	5	0.07
C71.5	VENTRICLE	1	0	1	0.01
C71.6	CEREBELLUM	4	3	7	0.10
C71.9	BRAIN UNSPECIFIED	25	23	48	0.67
C72.0	SPINAL CORD	0	1	1	0.01
C73	THYROID GLAND	60	196	256	3.56
C74.1	ADRENAL MEDULLA	0	1	1	0.01
C75.1	PITUITARY	1	3	4	0.06
C75.3	PINEAL GLAND	2	1	3	0.04
C76-C80	MALIGNANT NEOPLASM OF ILL - DEFINED, SECONDARY AND UNSPECIFIED SITE	86	79	165	2.29
C76.2	ABDOMEN	1	0	1	0.01
C76.3	PELVIS	0	1	1	0.01
C77.0	LYMPH NODE OF HEAD AND NECK	0	1	1	0.01
C77.3	LYMPH NODE OF AXILLAR	1	2	3	0.04
C77.9	LYMPH NODE UNSPECIFIED SITE	13	13	26	0.36
C80	UNKNOWN PRIMARY SITE	71	62	133	1.85
C81-C96	MALIGNANT NEOPLASM OF LYMPHOID, HAEMATIC AND RELATED TISSUE	361	270	631	8.77
C81.9	HODGKIN'S DISEASE UNSPECIFIED	26	8	34	0.47
C82.9	FOLLIC LYMPHOMA UNSPECIFIED	9	2	11	0.15
C83.2	MIXED SMALL AND LARGE CELL DIFFUSE	0	1	1	0.01
C83.3	NHL LARGE CELL DIFFUSE	28	32	60	0.83
C83.7	BURKIT'S TUMOUR	7	3	10	0.14
C83.8	NHL DIFFUSE OTHER TYPES	3	1	4	0.06
C83.9	DIFFUSE NHL UNSPECIFIED	7	5	12	0.17
C84.4	PERIPHERAL T-CELL LYMPHOMA	1	1	2	0.03
C84.5	T-CELL LYMPHOMA UNSPECIFIED	13	7	20	0.28
C85.1	B-CELL LYMPHOMA UNSPECIFIED	23	17	40	0.56
C85.9	NON-HODGKIN'S LYMPHOMA UNSPECIFIED TYPE	60	45	105	1.46
C90.0	MULTIPLE MYELOMA	30	44	74	1.03
C90.2	PLASMACYTOMA, EXTRAMEDULLARY	3	0	3	0.04
C91.0	ACUTE LYMPHOBLASTIC LEUKAEMIA	45	22	67	0.93
C91.1	CHRONIC LYMPHOCYTIC LEUKAEMIA	20	7	27	0.38
C91.4	HAIRY-CELL LEUKAEMIA	1	0	1	0.01
C92.0	ACUTE MYELOID LEUKAEMIA	40	37	77	1.07
C92.1	CHRONIC MYELOID LEUKAEMIA	30	14	44	0.61
C92.4	ACUTE PROMYELOCYTIC LEUKAEMIA	4	7	11	0.15
C94.0	ACUTE ERYTHROLEUKAEMIA	0	1	1	0.01
C94.2	ACUTE MEGAKARYOBLASTIC LEUKAEMIA	1	0	1	0.01
C95.9	LEUKAEMIA UNSPECIFIED	10	16	26	0.36

TABLE V
PATHOLOGY ACCORDING TO SITE

CODE	SITE	No. of Cases		
		MALE	FEMALE	TOTAL
	GRAND TOTAL	3,370	3,825	7,195
C00	MALIGNANT NEOPLASM OF LIP	5	19	24
	8051/3 VERRUCOUS CARCINOMA	0	1	1
	8070/3 SQUAMOUS CELL CARCINOMA	5	18	23
C01-C02	MALIGNANT NEOPLASM OF TONGUE	84	48	132
	8000/3 NEOPLASM, MALIGNANT, NOS	5	4	9
	8070/3 SQUAMOUS CELL CARCINOMA	76	42	118
	8140/3 ADENOCARCINOMA	1	0	1
	8200/3 ADENOID CYSTIC CARCINOMA	1	0	1
	9675/3 MALIGNANT LYMPHOMA, MIXED SMALL AND LARGE CELL	1	0	1
	9680/3 MALIGNANT LYMPHOMA ,LARGE CELL ,DIFFUSE	0	2	2
C03-C06	MALIGNANT NEOPLASM OF GUM, FLOOR OF MOUTH, PALATE AND OTHER UNSPECIFIED PART OF MOUTH	54	33	87
	8000/3 NEOPLASM, MALIGNANT, NOS	3	1	4
	8051/3 VERRUCOUS CARCINOMA	1	0	1
	8070/3 SQUAMOUS CELL CARCINOMA	45	28	73
	8140/3 ADENOCARCINOMA	1	1	2
	8200/3 ADENOID CYSTIC CARCINOMA	0	1	1
	8430/3 MUCOEPIDERMOID CARCINOMA	1	0	1
	8562/3 EPITHELIAL-MYOEPITHELIAL CA	0	1	1
	8800/3 SARCOMA	0	1	1
	9310/3 AMELOBLASTOMA, MALIGNANT	1	0	1
	9591/3 MALIGNANT LYMPHOMA, NON-HODKIN'S	1	0	1
	9671/3 MALIGNANT LYMPHOMA, LYMPHOPLASMACYTIC	1	0	1
C07-C08	MALIGNANT NEOPLASM PAROTID AND OTHER MAJOR SALIVARY GLAND	19	16	35
	8070/3 SQUAMOUS CELL CARCINOMA	2	1	3
	8140/3 ADENOCARCINOMA	1	2	3
	8200/3 ADENOID CYSTIC CARCINOMA	2	4	6
	8290/3 OXYPHILIC ADENOCARCINOMA	1	0	1
	8430/3 MUCOEPIDERMOID CARCINOMA	6	6	12
	8550/3 ACINIC CELL CARCINOMA	3	1	4
	8890/3 LEIOMYOSARCOMA	2	0	2
	8940/3 MIXED TUMOUR, MALIGNANT	1	1	2
	9591/3 MALIGNANT LYMPHOMA, NON-HODKIN'S	0	1	1
	9680/3 MALIGNANT LYMPHOMA, LARGE CELL, DIFFUSE	1	0	1
C09	MALIGNANT NEOPLASM OF TONSIL	31	7	38
	8000/3 NEOPLASM, MALIGNANT, NOS	1	1	2
	8020/3 CARCINOMA, UNDIFFERENTIATED	1	0	1
	8070/3 SQUAMOUS CELL CARCINOMA	27	2	29
	8720/3 MALIGNANT MELANOMA	1	0	1
	9591/3 MALIGNANT LYMPHOMA, NON-HODKIN'S	0	1	1
	9680/3 MALIGNANT LYMPHOMA, LARGE CELL, DIFFUSE	1	3	4
C10	MALIGNANT NEOPLASM OF OROPHARYNX	8	1	9
	8000/3 NEOPLASM, MALIGNANT, NOS	0	1	1
	8070/3 SQUAMOUS CELL CARCINOMA	8	0	8

TABLE V (cont.)
PATHOLOGY ACCORDING TO SITE

CODE	SITE	No. of Cases		
		MALE	FEMALE	TOTAL
C11	MALIGNANT NEOPLASM OF NASOPHARYNX	111	34	145
	8000/3 NEOPLASM, MALIGNANT, NOS	12	1	13
	8020/3 CARCINOMA, UNDIFFERENTIATED	40	11	51
	8070/3 SQUAMOUS CELL CARCINOMA	49	20	69
	8071/3 SQUAMOUS CELL CARCINOMA KERATINIZING	1	0	1
	8072/3 SQUAMAUS CELL CARCINOMA LARGE CELL NON KERATINIZING	4	2	6
	8140/3 ADENOCARCINOMA	3	0	3
	8430/3 MUCOEPIDERMOID CARCINOMA	1	0	1
	9591/3 MALIGNANT LYMPHOMA, NON-HODKIN'S	1	0	1
C12	MALIGNANT NEOPLASM OF PYRIFORM SINUS	21	0	21
	8000/3 NEOPLASM, MALIGNANT, NOS	3	0	3
	8070/3 SQUAMOUS CELL CARCINOMA	18	0	18
C13	MALIGNANT NEOPLASM OF HYPOPHARYNX	17	2	19
	8000/3 NEOPLASM, MALIGNANT, NOS	1	0	1
	8070/3 SQUAMOUS CELL CARCINOMA	16	2	18
C14	MALIGNANT NEOPLASM OF OTHER AND ILL-DEFINED SITE IN THE LIP, ORAL CAVITY AND PHARYNX	10	2	12
	8070/3 SQUAMOUS CELL CARCINOMA	9	2	11
	9590/3 MALIGNANT LYMPHOMA	1	0	1
C15	MALIGNANT NEOPLASM OF OESOPHAGUS	94	23	117
	8000/3 NEOPLASM, MALIGNANT, NOS	18	6	24
	8010/3 CARCINOMA	1	0	1
	8041/3 SMALL CELL CARCINOMA	1	0	1
	8070/3 SQUAMOUS CELL CARCINOMA	60	14	74
	8071/3 SQUAMOUS CELL CARCINOMA KERATINIZING	1	0	1
	8140/3 ADENOCARCINOMA	11	3	14
	8490/3 SIGNET RING CELL CARCINOMA	1	0	1
	8560/3 ADENOSQUAMOUS CARCINOMA	1	0	1
C16	MALIGNANT NEOPLASM OF STOMACH	52	56	108
	8000/3 NEOPLASM, MALIGNANT, NOS	4	3	7
	8032/3 SPINDLE CELL CARCINOMA	0	1	1
	8140/3 ADENOCARCINOMA	40	36	76
	8490/3 SIGNET RING CELL CARCINOMA	3	4	7
	8560/3 ADENOSQUAMOUS CARCINOMA	0	1	1
	8935/3 STROMAL SARCOMA, NOS	1	0	1
	8936/3 GASTROINTESTINAL STROMAL SARCOMA	2	9	11
	9590/3 MALIGNANT LYMPHOMA	0	1	1
	9591/3 MALIGNANT LYMPHOMA, NON HODGKIN'S	1	0	1
	9680/3 MALIGNANT LYMPHOMA, LARGE B-CELL, DIFFUSE, NOS	1	1	2
C17	MALIGNANT NEOPLASM SMALL INTESTINE	14	14	28
	8000/3 NEOPLASM, MALIGNANT, NOS	0	1	1
	8032/3 SPINDLE CELL CARCINOMA	0	1	1
	8140/3 ADENOCARCINOMA	11	8	19
	8801/3 SPINDLE CELL SARCOMA	0	1	1
	8891/3 EPITHELIOID LEIOMYOSARCOMA	0	1	1
	8936/3 GASTROINTESTINAL STROMAL SARCOMA	2	1	3
	9591/3 MALIGNANT LYMPHOMA, NON-HODKIN'S	1	0	1
	9680/3 MALIGNANT LARGE CELL DIFFUSE	0	1	1

TABLE V (cont.)
PATHOLOGY ACCORDING TO SITE

CODE	SITE	No. of Cases		
		MALE	FEMALE	TOTAL
C18	MALIGNANT NEOPLASM OF COLON	158	158	316
	8000/3 NEOPLASM, MALIGNANT, NOS	16	22	38
	8010/3 CARCINOMA	1	0	1
	8070/3 SQUAMOUS CELL CARCINOMA	0	1	1
	8140/3 ADENOCARCINOMA	136	131	267
	8246/3 NEUROENDOCRINE CARCINOMA	1	1	2
	8260/3 PAPILLARY ADENOCARCINOMA	0	1	1
	8480/3 MUCINOUS ADENOCARCINOMA	4	1	5
	8490/3 SIGNET RING CELL CARCINOMA	0	1	1
C19	MALIGNANT NEOPLASM OF RECTOSIGMOID	20	25	45
	8000/3 NEOPLASM, MALIGNANT, NOS	1	0	1
	8140/3 ADENOCARCINOMA	18	24	42
	8246/3 NEUROENDOCRINE CARCINOMA	1	0	1
	8480/3 MUCINOUS ADENOCARCINOMA	0	1	1
C20	MALIGNANT NEOPLASM OF RECTUM	126	107	233
	8000/3 NEOPLASM, MALIGNANT, NOS	7	12	19
	8010/3 CARCINOMA	1	0	1
	8020/3 CARCINOMA, UNDIFFERENTIATED	2	1	3
	8032/3 SPINDLE CELL CARCINOMA	0	1	1
	8041/3 SMALL CELL CARCINOMA	2	1	3
	8070/3 SQUAMOUS CELL CARCINOMA	0	4	4
	8140/3 ADENOCARCINOMA	109	84	193
	8240/3 CARCINOID TUMOUR	1	0	1
	8441/3 SEROUS CYSTADENOCARCINOMA	0	1	1
	8480/3 MUCINOUS ADENOCARCINOMA	3	0	3
	8490/3 SIGNET RING CELL CARCINOMA	1	0	1
	8720/3 MALIGNANT MELANOMA	0	1	1
	8936/3 GASTROINTESTINAL STROMAL SARCOMA	0	1	1
	9680/3 MALIGNANT LARGE CELL DIFFUSE	0	1	1
C21	MALIGNANT NEOPLASM OF ANUS AND ANAL	3	4	7
	8070/3 SQUAMOUS CELL CARCINOMA	0	2	2
	8140/3 ADENOCARCINOMA	3	2	5
C22	MALIGNANT NEOPLASM OF LIVER AND INTRAHEPATIC BILE DUCTS	477	178	655
	8000/3 NEOPLASM, MALIGNANT, NOS	5	4	9
	8020/3 CARCINOMA, UNDIFFERENTIATED	0	1	1
	8140/3 ADENOCARCINOMA	11	10	21
	8160/3 CHOLANGIOCARCINOMA	102	52	154
	8170/3 HEPATOCELLULAR CARCINOMA	357	110	467
	8970/3 HEPATOBLASTOMA	2	1	3
C23	MALIGNANT NEOPLASM OF GALL BLADDER	12	9	21
	8000/3 NEOPLASM, MALIGNANT, NOS	3	4	7
	8140/3 ADENOCARCINOMA	7	3	10
	8160/3 CHOLANGIOCARCINOMA	1	0	1
	8260/3 PAPILLARY ADENOCARCINOMA	0	1	1
	8480/3 MUCINOUS ADENOCARCINOMA	1	1	2

TABLE V (cont.)
PATHOLOGY ACCORDING TO SITE

CODE	SITE	No. of Cases		TOTAL
		MALE	FEMALE	
C24	MALIGNANT NEOPLASM OF OTHER AND UNSPECIFIED PARTS OF BILIARY TRACT	19	12	31
	8000/3 NEOPLASM, MALIGNANT, NOS	4	3	7
	8140/3 ADENOCARCINOMA	11	9	20
	8160/3 CHOLANGIOCARCINOMA	4	0	4
C25	MALIGNANT NEOPLASM OF PANCREAS	36	46	82
	8000/3 NEOPLASM, MALIGNANT, NOS	17	27	44
	8010/3 CARCINOMA	0	2	2
	8031/3 GIANT CELL CARCINOMA	1	0	1
	8050/3 PAPILLARY CARCINOMA	0	1	1
	8140/3 ADENOCARCINOMA	15	12	27
	8246/3 NEUROENDOCRINE CARCINOMA	1	0	1
	8260/3 PAPILLARY ADENOCARCINOMA	2	0	2
	8452/3 SOLID PSEUDOPAPILLARY CARCINOMA	0	1	1
	8453/3 INTRADUCTAL PAPILLARY-MUCINOUS CARCINOMA	0	1	1
	8550/3 ACINAR CELL CARCINOMA	0	1	1
	8560/3 ADENOSQUAMOUS CARCINOMA	0	1	1
C30	MALIGNANT NEOPLASM OF NASAL CAVITY AND MIDDLE EAR	16	6	22
	8020/3 CARCINOMA, UNDIFFERENTIATED	1	0	1
	8041/3 SMALL CELL CARCINOMA	1	0	1
	8070/3 SQUAMOUS CELL CARCINOMA	7	0	7
	8140/3 ADENOCARCINOMA	0	1	1
	8200/3 ADENOID CYSTIC CARCINOMA	5	2	7
	8430/3 MUCOEPIDERMOID CARCINOMA	0	1	1
	8720/3 MALIGNANT MELANOMA	0	1	1
	9150/3 HAEMANGIOPERICYTOMA, MALIGNANT	2	0	2
	9500/3 NEUROBLASTOMA	0	1	1
C31	MALIGNANT NEOPLASM OF ACCESSORY SINUSES	5	3	8
	8000/3 NEOPLASM, MALIGNANT, NOS	1	0	1
	8070/3 SQUAMOUS CELL CARCINOMA	4	3	7
C32	MALIGNANT NEOPLASM OF LARYNX	82	10	92
	8000/3 NEOPLASM, MALIGNANT, NOS	7	1	8
	8010/3 CARCINOMA	1	0	1
	8070/3 SQUAMOUS CELL CARCINOMA	71	9	80
	8071/3 SQUAMOUS CELL CARCINOMA KERATINIZING	1	0	1
	8072/3 SQUAMOUS CELL CARCINOMA LARGE CELL NON KERATINIZING	1	0	1
	8246/3 NEUROENDOCRINE CARCINOMA, NOS	1	0	1
C33-C34	MALIGNANT NEOPLASM OF TRACHEA, BRONCHUS AND LUNG	395	189	584
	8000/3 NEOPLASM, MALIGNANT, NOS	44	23	67
	8010/3 CARCINOMA	5	2	7
	8020/3 CARCINOMA, UNDIFFERENTIATED	11	3	14
	8022/3 PLEOMORPHIC CARCINOMA	1	0	1
	8032/3 SPINDLE CELL CARCINOMA	1	0	1
	8041/3 SMALL CELL CARCINOMA	18	4	22
	8046/3 NON-SMALL CELL CARCINOMA	124	43	167
	8070/3 SQUAMOUS CELL CARCINOMA	48	4	52
	8140/3 ADENOCARCINOMA	131	101	232
	8200/3 ADENOID CYSTIC CARCINOMA	0	1	1
	8246/3 NEUROENDOCRINE CARCINOMA, NOS	4	1	5
	8250/3 BRONCHIO-ALVEOLAR ADENOCARCINOMA	0	2	2

TABLE V (cont.)
PATHOLOGY ACCORDING TO SITE

CODE	SITE	No. of Cases		TOTAL
		MALE	FEMALE	
	8251/3 ALVEOLAR ADENOCARCINOMA	1	0	1
	8260/3 PAPILLARY ADENOCARCINOMA	1	1	2
	8310/3 CLEAR CELL ADENOCARCINOMA	1	1	2
	8560/3 ADENOSQUAMOUS CARCINOMA	2	1	3
	8830/3 FIBROUS HISTIOCYTOMA, MALIGNANT	1	0	1
	8900/3 RHABDOMYOSARCOMA	1	0	1
	9064/3 GERMINOMA	1	0	1
	9590/3 MALIGNANT LYMPHOMA	0	1	1
	9591/3 MALIGNANT LYMPHOMA, NON-HODKIN'S	0	1	1
C37	MALIGNANT NEOPLASM OF THYMUS	2	5	7
	8580/3 THYMOMA, MALIGNANT	2	4	6
	8586/3 THYMIC CARCINOMA	0	1	1
C38	MALIGNANT NEOPLASM OF HEART, MEDIASTINUM AND PLEURA	5	1	6
	8010/3 CARCINOMA	1	0	1
	8020/3 CARCINOMA, UNDIFFERENTIATED	0	1	1
	8082/3 LYMPHOEPITHELIAL CARCINOMA	1	0	1
	8246/3 NEUROENDOCRINE CARCINOMA, NOS	1	0	1
	9064/3 GERMINOMA	2	0	2
C40-C41	MALIGNANT NEOPLASM OF BONE AND CARTILAGE	36	26	62
	8022/3 PLEOMORPHIC CARCINOMA	1	0	1
	9180/3 OSTEOSARCOMA	20	17	37
	9220/3 CHONDROSARCOMA	8	3	11
	9250/3 GIANT CELL TUMOUR OF BONE, MALIGNANT	2	3	5
	9260/3 EWING'S SARCOMA	3	2	5
	9310/3 AMELOBLASTOMA, MALIGNANT	0	1	1
	9731/3 PLASMACYTOMA	2	0	2
C43	MALIGNANT MELANOMA OF SKIN	14	10	24
	8720/3 MALIGNANT MELANOMA	14	9	23
	8742/3 MALIGNANT MELANOMA IN HUTCHINSON MELANOTIC FRECKLE	0	1	1
C44	OTHER MALIGNANT NEOPLASM OF SKIN	86	96	182
	8021/3 CARCINOMA, ANAPLASTIC	0	1	1
	8070/3 SQUAMOUS CELL CARCINOMA	47	25	72
	8090/3 BASAL CELL CARCINOMA	33	55	88
	8094/3 BASOSQUAMOUS CARCINOMA	0	1	1
	8140/3 ADENOCARCINOMA	1	2	3
	8200/3 ADENOID CYSTIC CARCINOMA	0	1	1
	8410/3 SEBACEOUS ADENOCARCINOMA	2	2	4
	8720/3 MALIGNANT MELANOMA	1	1	2
	8832/3 DERMATOFIBROSARCOMA	1	4	5
	9680/3 MALIGNANT LARGE CELL DIFFUSE	0	2	2
	9700/3 MYCOSIS FUNGOIDES	1	0	1
	9709/3 CUTANEOUS LYMPHOMA	0	2	2
C46	KAPOSI'S SARCOMA	1	0	1
	9140/3 KAPOSI'S SARCOMA	1	0	1

TABLE V (cont.)
PATHOLOGY ACCORDING TO SITE

CODE	SITE	No. of Cases			
		MALE	FEMALE	TOTAL	
C47	MALIGNANT NEOPLASM OF PERIPHERAL NERVE AND AUTONOMIC NERVOUS SYSTEM	0	11	11	
	9500/3 NEUROBLASTOMA	0	5	5	
	9503/3 NEUROEPITHELIOMA	0	1	1	
	9540/3 NEUROFIBROSARCOMA	0	3	3	
	9561/3 TRITON TUMOUR, MALIGNANT	0	2	2	
C48	MALIGNANT NEOPLASM OF RETROPERITONIUM AND PERITONIUM	1	3	4	
	8810/3 FIBROSARCOMA	1	0	1	
	8890/3 LEIOMYOSARCOMA	0	2	2	
	9500/3 NEUROBLASTOMA	0	1	1	
C49	MALIGNANT NEOPLASM OF OTHER CONNECTIVE AND SOFT TISSUE	45	49	94	
	8032/3 SPINDLE CELL CARCINOMA	1	0	1	
	8800/3 SARCOMA	9	8	17	
	8801/3 SPINDLE CELL SARCOMA	6	11	17	
	8802/3 GIANT CELL SARCOMA, SOFT TISSUE	3	4	7	
	8804/3 EPITHELIOID SARCOMA	0	1	1	
	8810/3 FIBROSARCOMA	2	2	4	
	8830/3 FIBROUS HISTIOCYTOMA, MALIGNANT	1	1	2	
	8850/3 LIPOSARCOMA	4	5	9	
	8852/3 MYXOID LIPOSARCOMA	4	3	7	
	8890/3 LEIOMYOSARCOMA	4	4	8	
	8900/3 RHABDOMYOSARCOMA	4	3	7	
	8910/3 EMBRYONAL RHABDOMYOSARCOMA	0	1	1	
	9040/3 SYNOVIAL SARCOMA	4	4	8	
	9120/3 HAEMANGIOSARCOMA	1	0	1	
	9150/3 HAEMANGIOPERICYTOMA, MALIGNANT	1	1	2	
	9490/3 GANGLIONEUROBLASTOMA	1	0	1	
	9581/3 ALVEOLAR SOFT PART SARCOMA	0	1	1	
	C50	MALIGNANT NEOPLASM OF BREAST	6	1,004	1,010
		8000/3 NEOPLASM, MALIGNANT, NOS	0	112	112
8010/2 CARCINOMA IN SITU		0	1	1	
8010/3 CARCINOMA		0	3	3	
8050/3 PAPILLARY CARCINOMA		0	5	5	
8070/3 SQUAMOUS CELL CARCINOMA		0	1	1	
8140/3 ADENOCARCINOMA		0	6	6	
8201/3 CRIBIFORM CARCINOMA		0	1	1	
8480/3 MUCINOUS ADENOCARCINOMA		0	20	20	
8500/2 INTRADUCTAL CARCINOMA		0	80	80	
8500/3 INFILTRATING DUCT CARCINOMA		6	745	751	
8503/2 INTRADUCTAL PAPILLARY ADENOCARCINOMA		0	2	2	
8510/3 MEDULLARY CARCINOMA		0	4	4	
8520/2 LOBULAR CARCINOMA IN SITU		0	1	1	
8520/3 LOBULAR CARCINOMA		0	16	16	
8540/3 PAGET'S DISEASE, MAMMARY		0	1	1	
9020/3 PHYLLODES TUMOUR, MALIGNANT		0	3	3	
9590/3 MALIGNANT LYMPHOMA		0	1	1	
9591/3 MALIGNANT LYMPHOMA, NON-HODKIN'S		0	1	1	
9680/3 MALIGNANT LARGE CELL DIFFUSE		0	1	1	

TABLE V (cont.)
PATHOLOGY ACCORDING TO SITE

CODE	SITE	No. of Cases		
		MALE	FEMALE	TOTAL
C51	MALIGNANT NEOPLASM OF VULVA	0	12	12
	8000/3 NEOPLASM, MALIGNANT, NOS	0	1	1
	8010/3 CARCINOMA	0	1	1
	8070/3 SQUAMOUS CELL CARCINOMA	0	7	7
	8542/3 PAGET'S DISEASE, EXTRA MAMMARY	0	1	1
	8560/3 ADENOSQUAMOUS CARCINOMA	0	1	1
	8891/3 EPITHELIOID LEIOMYOSARCOMA	0	1	1
C52	MALIGNANT NEOPLASM OF VAGINA	0	14	14
	8000/3 NEOPLASM, MALIGNANT, NOS	0	1	1
	8010/2 CARCINOMA IN SITU	0	1	1
	8041/3 SMALL CELL CARCINOMA	0	1	1
	8070/3 SQUAMOUS CELL CARCINOMA	0	2	2
	8140/3 ADENOCARCINOMA	0	6	6
	8260/3 PAPILLARY ADENOCARCINOMA	0	2	2
	8720/3 MALIGNANT MELANOMA	0	1	1
C53	MALIGNANT NEOPLASM OF CERVIX	0	546	546
	8000/3 NEOPLASM, MALIGNANT, NOS	0	30	30
	8002/3 MALIGNANT TUMOUR, SMALL CELL TYPE	0	1	1
	8010/2 CARCINOMA IN SITU	0	18	18
	8010/3 CARCINOMA	0	1	1
	8015/3 GLASSY CELL CARCINOMA	0	1	1
	8020/3 CARCINOMA, UNDIFFERENTIATED	0	3	3
	8041/3 SMALL CELL CARCINOMA	0	3	3
	8070/3 SQUAMOUS CELL CARCINOMA	0	132	132
	8071/3 SQUAMOUS CELL CARCINOMA, KERATINIZING	0	34	34
	8072/3 SQUAMOUS CELL CARCINOMA, LARGE CELL, NONKERATINIZING	0	180	180
	8077/2 SQUAMOUS INTRAEPITHELIAL NEOPLASIA, GRADE III	0	19	19
	8140/2 ADENOCARCINOMA IN SITU	0	3	3
	8140/3 ADENOCARCINOMA	0	87	87
	8246/3 NEUROENDOCRINE CARCINOMA	0	2	2
	8260/3 PAPILLARY ADENOCARCINOMA	0	3	3
	8380/3 ENDOMETRIOD CARCINOMA	0	4	4
	8384/3 ADENOCA, ENDOCERVICAL TYPE	0	11	11
	8430/3 MUCOEPIDERMOID CARCINOMA	0	1	1
	8480/3 MUCINOUS ADENOCARCINOMA	0	1	1
	8560/3 ADENOSQUAMOUS CARCINOMA	0	12	12
C54-C55	MALIGNANT NEOPLASM OF CORPUS UTERI AND UTERUS PART UNSPECIFIED	0	157	157
	8000/3 NEOPLASM, MALIGNANT, NOS	0	6	6
	8140/3 ADENOCARCINOMA	0	30	30
	8310/3 CLEAR CELL ADENOCARCINOMA	0	2	2
	8380/3 ADENOCARCINOMA, ENDOMETRIOD TYPE	0	103	103
	8441/3 SEROUS CYSTADENOCARCINOMA	0	1	1
	8480/3 MUCINOUS ADENOCARCINOMA	0	1	1
	8560/3 ADENOSQUAMOUS CARCINOMA	0	2	2
	8890/3 LEIOMYOSARCOMA	0	8	8
	8896/3 MYXOID LEIOMYOSARCOMA	0	1	1
	8930/3 ENDOMETRIAL STROMAL SARCOMA	0	2	2
	8980/3 CARCINOSARCOMA	0	1	1

TABLE V (cont.)
PATHOLOGY ACCORDING TO SITE

CODE	SITE	No. of Cases		
		MALE	FEMALE	TOTAL
C56	MALIGNANT NEOPLASM OF OVARY	0	176	176
	8000/3 NEOPLASM, MALIGNANT, NOS	0	11	11
	8010/3 CARCINOMA	0	2	2
	8070/3 SQUAMOUS CELL CARCINOMA	0	1	1
	8140/3 ADENOCARCINOMA	0	24	24
	8260/3 PAPILLARY ADENOCARCINOMA	0	5	5
	8310/3 CLEAR CELL ADENOCARCINOMA	0	27	27
	8380/3 ADENOCARCINOMA, ENDOMETRIOD TYPE	0	16	16
	8440/3 CYSTADENOCARCINOMA	0	3	3
	8441/3 SEROUS CYSTADENOCARCINOMA	0	26	26
	8450/3 PAPILLARY CYSTADENOCARCINOMA	0	1	1
	8460/3 PAPILLARY SEROUS CYSTADENOCARCINOMA	0	7	7
	8470/3 MUCINOUS CYSTADENOCARCINOMA	0	21	21
	8480/3 MUCINOUS ADENOCARCINOMA	0	12	12
	8620/3 GRANULOSA CELL TUMOUR	0	3	3
	8890/3 LEIOMYOSARCOMA	0	3	3
	9000/3 BRENNER TUMOUR, MALIGNANT	0	1	1
	9060/3 DYSGERMINOMA	0	3	3
	9064/3 GERMINOMA	0	1	1
	9071/3 ENDODERMAL SINUS TUMOUR	0	1	1
	9080/3 TERATOMA, MALIGNANT	0	4	4
	9082/3 MALIGNANT TERATOMA, UNDIFFERENTIATED	0	2	2
	9085/3 MIXED GERM CELL TUMOUR	0	1	1
	9364/3 PERIPHERAL NEUROECTODERMALTUMOR	0	1	1
C57	MALIGNANT NEOPLASM OF OTHER AND UNSPECIFIED	0	1	1
	8010/3 CARCINOMA	0	1	1
C58	MALIGNANT NEOPLASM OF PLACENTA	0	3	3
	9100/3 CHORIOCARCINOMA	0	3	3
C60	MALIGNANT NEOPLASM OF PENIS	17	0	17
	8000/3 NEOPLASM, MALIGNANT, NOS	3	0	3
	8070/3 SQUAMOUS CELL CARCINOMA	14	0	14
C61	MALIGNANT NEOPLASM OF PROSTATE	525	0	525
	8000/3 NEOPLASM, MALIGNANT, NOS	12	0	12
	8140/3 ADENOCARCINOMA	513	0	513
C62	MALIGNANT NEOPLASM OF TESTIS	5	0	5
	8000/3 NEOPLASM, MALIGNANT, NOS	2	0	2
	9061/3 SEMINOMA	3	0	3
C64	MALIGNANT NEOPLASM OF KIDNEY	36	33	69
	8310/3 CLEAR CELL ADENOCARCINOMA	1	0	1
	8312/3 RENAL CELL CARCINOMA	33	29	62
	8960/3 NEPHROBLASTOMA (WILMS'S TUMOUR)	2	4	6
C65	MALIGNANT NEOPLASM OF RENAL PELVIS	10	5	15
	8120/3 TRANSITIONAL CELL CARCINOMA	10	5	15
C66	MALIGNANT NEOPLASM OF URETER	3	5	8
	8000/3 NEOPLASM, MALIGNANT, NOS	1	0	1
	8120/3 TRANSITIONAL CELL CARCINOMA	2	5	7

TABLE V (cont.)
PATHOLOGY ACCORDING TO SITE

CODE	SITE	No. of Cases		TOTAL
		MALE	FEMALE	
C67-C68	MALIGNANT NEOPLASM OF BLADDER AND OF OTHER AND UNSPECIFIED PART OF URINARY ORGANS	132	47	179
	8000/3 NEOPLASM, MALIGNANT, NOS	14	3	17
	8010/3 CARCINOMA	0	1	1
	8033/3 PSEUDOSARCOMATOUS CARCINOMA	0	1	1
	8070/3 SQUAMOUS CELL CARCINOMA	3	2	5
	8072/3 SQUAMOUS CELL CARCINOMA LARGE CELL NON KERATINIZING	0	1	1
	8120/3 TRANSITIONAL CELL CARCINOMA	112	38	150
	8140/3 ADENOCARCINOMA	2	1	3
	8480/3 MUCINOUS ADENOCARCINOMA	1	0	1
C69	MALIGNANT NEOPLASM OF EYE AND ADNEXA	18	16	34
	8010/2 CARCINOMA IN SITU	1	0	1
	8070/2 SQUAMOUS CELL CARCINOMA, CARCINOMA IN SITU	0	1	1
	8070/3 SQUAMOUS CELL CARCINOMA	2	2	4
	8090/3 BASAL CELL CARCINOMA	1	0	1
	8140/3 ADENOCARCINOMA	0	2	2
	8200/3 ADENOID CYSTIC CARCINOMA	1	1	2
	8720/3 MALIGNANT MELANOMA	2	0	2
	9510/3 RETINOBLASTOMA	8	9	17
	9590/3 MALIGNANT LYMPHOMA	1	0	1
	9591/3 MALIGNANT LYMPHOMA, NON-HODKIN'S	2	0	2
	9680/3 MALIGNANT LARGE CELL DIFFUSE	0	1	1
C70	MALIGNANT NEOPLASM OF MENINGES	3	15	18
	9530/3 MENINGIOMA, MALIGNANT	3	15	18
C71	MALIGNANT NEOPLASM OF BRAIN	45	34	79
	8000/3 NEOPLASM, MALIGNANT, NOS	3	0	3
	8021/3 CARCINOMA, ANAPLASTIC	0	1	1
	8510/3 MEDULLARY CARCINOMA	1	0	1
	9064/3 GERMINOMA	6	0	6
	9085/3 MIXED GERM CELL TUMOUR	0	1	1
	9380/3 GLIOMA, MALIGNANT	1	1	2
	9381/3 GLIOMATOSIS CEREBRI	0	1	1
	9382/3 MIXED GLIOMA	0	1	1
	9391/3 EPENDYMOMA	1	1	2
	9392/3 EPENDYMOMA, ANAPLASTIC	0	1	1
	9400/3 ASTROCYTOMA	8	4	12
	9401/3 ASTROCYTOMA, ANAPLASTIC	2	1	3
	9440/3 GLIOBLASTOMA	12	10	22
	9450/3 OLIGODENDROGLIOMA	3	1	4
	9451/3 OLIGODENDROGLIOMA, ANAPLASTIC	0	3	3
	9470/3 MEDULLOBLASTOMA	2	4	6
	9473/3 PRIMITIVE NEUROECTODERMAL TUMOR	1	0	1
	9490/3 GANGLIONEUROBLASTOMA	0	2	2
	9500/3 NEUROBLASTOMA	2	2	4
	9505/3 GANGLIOMA, ANAPLASTIC	1	0	1
	9508/3 ATYPICAL TERATOID/RHABDOID TUMOR	1	0	1
	9680/3 MALIGNANT LYMPHOMA, LARGE CELL, DIFFUSE	1	0	1
C72	MALIGNANT NEOPLASM OF SPINAL CORD, CRANIAL NERVES AND OTHER PART OF CENTRAL NERVOUS SYSTEM	0	1	1
	9391/3 EPENDYMOMA	0	1	1

TABLE V (cont.)
PATHOLOGY ACCORDING TO SITE

CODE	SITE	No. of Cases		
		MALE	FEMALE	TOTAL
C73	MALIGNANT NEOPLASM OF THYROID	60	196	256
	8000/3 NEOPLASM, MALIGNANT, NOS	0	3	3
	8020/3 CARCINOMA, UNDIFFERENTIATED	1	0	1
	8021/3 CARCINOMA, ANAPLASTIC	4	3	7
	8050/3 PAPILLARY CARCINOMA	31	126	157
	8070/3 SQUAMOUS CELL CARCINOMA	2	0	2
	8140/3 ADENOCARCINOMA	0	1	1
	8260/3 PAPILLARY ADENOCARCINOMA	1	2	3
	8290/3 OXYPHILIC ADENOCARCINOMA	0	1	1
	8310/3 CLEAR CELL ADENOCARCINOMA	1	0	1
	8330/3 FOLLICULAR ADENOCARCINOMA	17	35	52
	8341/3 PAPILLARY MICROCARCINOMA	1	19	20
	8510/3 MEDULLARY CARCINOMA	1	5	6
	8720/3 MALIGNANT MELANOMA	1	0	1
	9590/3 MALIGNANT LYMPHOMA	0	1	1
C74	MALIGNANT NEOPLASM OF ADRENAL GLAND	0	1	1
	8700/3 PHEOCHROMOCYTOMA, MALIGNANT	0	1	1
C75	MALIGNANT NEOPLASM OF OTHER ENDOCRINE GLANDS AND RELATED STRUCTURES	3	4	7
	8272/3 PITUITARY CARCINOMA	1	3	4
	9064/3 GERMINOMA	2	1	3
C76-C80	MALIGNANT NEOPLASM WITHOUT SPECIFIED SITE AND METASTATIC MALIGNANT IN VARIOUS SITES	86	79	165
	8000/3 NEOPLASM, MALIGNANT, NOS	21	16	37
	8010/3 CARCINOMA	7	2	9
	8020/3 CARCINOMA, UNDIFFERENTIATED	3	3	6
	8032/3 SPINDLE CELL CARCINOMA	1	1	2
	8041/3 SMALL CELL CARCINOMA	1	1	2
	8070/3 SQUAMOUS CELL CARCINOMA	16	7	23
	8140/3 ADENOCARCINOMA	33	46	79
	8246/3 NEUROENDOCRINE CARCINOMA	1	0	1
	8260/3 PAPILLARY ADENOCARCINOMA	0	1	1
	8480/3 MUCINOUS ADENOCARCINOMA	0	1	1
	8800/3 SARCOMA	1	0	1
	8936/3 GASTROINTESTINAL STROMAL SARCOMA	1	0	1
	9080/3 TERATOMA, MALIGNANT	1	1	2
C81	HODGKIN'S DISEASE	26	8	34
	9650/3 HODGKIN'S DISEASE	26	8	34
C82	FOLLICULAR NON-HODGKIN'S LYMPHOMA	9	2	11
	9690/3 MALIGNANT LYMPHOMA, FOLLICULAR	9	2	11
C83	DIFFUSE NON-HODGKIN'S LYMPHOMA	45	42	87
	9591/3 MALIGNANT LYMPHOMA, NON-HODKIN'S	3	1	4
	9670/3 MALIGNANT LYMPHOMA, SMALL LYMPHOCYTIC	1	0	1
	9673/3 MALIGNANT LYMPHOMA, LYMPHOCYTIC, INTERMEDIATE	3	1	4
	9675/3 MALIGNANT LYMPHOMA, MIXED SMALL AND LARGE CELL	1	1	2
	9680/3 MALIGNANT LARGE CELL DIFFUSE	30	36	66
	9687/3 BURKITT'S LYMPHOMA	7	3	10

TABLE V (cont.)
PATHOLOGY ACCORDING TO SITE

CODE	SITE	No. of Cases		
		MALE	FEMALE	TOTAL
C84	PERIPHERAL AND CUTANEOUS T-CELL LYMPHOMA	15	10	25
	9702/3 PERIPHERAL T-CELL LYMPHOMA	14	6	20
	9705/3 AILD, PERIPHERAL T-CELL LYMPHOMA	1	2	3
	9708/3 SUBCUTANEOUS PANNICULITIS-LIKE T-CELL LYMPHOMA	0	1	1
	9717/3 INTESTINAL T-CELL LYMPHOMA	0	1	1
C85	OTHER AND UNSPECIFIED TYPE OF NON-HODGKIN LYMPHOMA	83	62	145
	9590/3 MALIGNANT LYMPHOMA	41	27	68
	9591/3 MALIGNANT LYMPHOMA, NON-HODGKIN	30	21	51
	9650/3 HODGKIN'S DISEASE	0	1	1
	9671/3 MALIGNANT LYMPHOMA, LYMPHOPLASMACYTIC	2	3	5
	9675/3 MALIGNANT LYMPHOMA, MIXED SMALL AND LARGE CELL	1	1	2
	9675/3 MALIGNANT LYMPHOMA, MIXED SMALL AND LARGE CELL, DIFFUSE	2	2	4
	9680/3 MALIGNANT LYMPHOMA, LARGE CELL, DIFFUSE	4	3	7
	9689/3 SPLEENIC MARGINAL ZONE LYMPHOMA	0	1	1
	9699/3 MARGINAL ZONE B-CELL LYMPHOMA	3	3	6
C90	MULTIPLE MYELOMA AND MALIGNANT PLASMA CELL NEOPLASM	33	44	77
	9731/3 PLASMACYTOMA	3	0	3
	9732/3 MULTIPLE MYELOMA	30	44	74
C91	LYMPHOID LEUKAEMIA	66	29	95
	9823/3 CHRONIC LYMPHOCYTIC LEUKAEMIA	20	7	27
	9835/3 ACUTE LYMPHOBLASTIC LEUKAEMIA	45	22	67
	9940/3 HAIRY CELL LEUKAEMIA	1	0	1
C92	MYELOID LEUKAEMIA	74	58	132
	9863/3 CHRONIC MYELOID LEUKAEMIA	30	14	44
	9866/3 ACUTE PROMYELOCYTIC LEUKAEMIA	4	7	11
	9872/3 ACUTE MYELOBLASTIC LEUKAEMIA	40	37	77
C94-C95	OTHER SPECIFIED AND UNSPECIFIED LEUKAEMIA	11	17	28
	9800/3 LEUKAEMIA	0	1	1
	9801/3 ACUTE LEUKAEMIA	10	14	24
	9840/3 ERYTHROLEUKAEMIA	0	1	1
	9910/3 ACUTE MEGAKARYOBLASTIC LEUKAEMIA	1	0	1
	9961/3 MYELOSCLEROSIS WITH MYELOIDMETA	0	1	1

TABLE VI
THE TEN LEADING SITES

Site	MALE	FEMALE	TOTAL	%
All Sites	3,370	3,825	7,195	100.00
BREAST	6	1,004	1,010	14.04
LIVER	477	178	655	9.10
COLON AND RECTUM	304	290	594	8.26
LUNG	395	189	584	8.12
CERVIX	0	546	546	7.59
PROSTATE	525	0	525	7.30
LYMPHOMA	178	124	302	4.20
THYROID	60	196	256	3.56
LEUKAEMIA	151	104	255	3.54
ORAL CAVITY	143	100	243	3.38

TABLE VII
THE TEN LEADING SITES

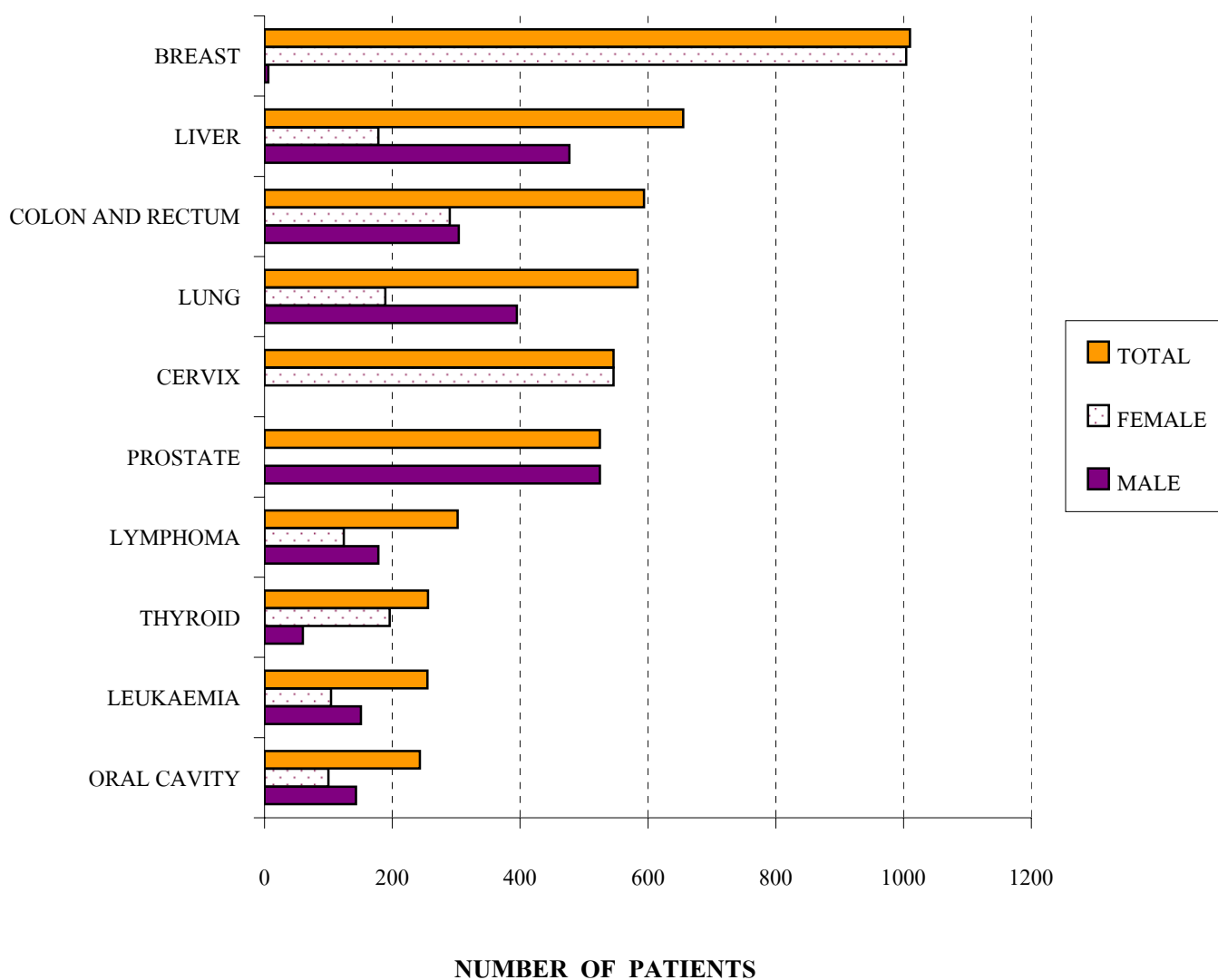


TABLE VII
MALIGNANT NEOPLASM IN CHILDHOOD

Code		No. of cases			>0-4		5-9		10-15	
		Total	M	F	M	F	M	F	M	F
Total		153	86	67	37	33	19	19	30	15
C07-C08	SALIVARY GLAND	2	2	0	0	0	0	0	2	0
C11	NASOPHARYNX	1	1	0	0	0	0	0	1	0
C18-C21	COLON, RECTUM	1	1	0	0	0	0	0	1	0
C22	LIVER	4	3	1	3	1	0	0	0	0
C37-C39	HEART AND MEDIAS	3	3	0	0	0	0	0	3	0
C40-C41	BONE AND JOINT	12	8	4	1	1	1	2	6	1
C45-C49	SOFT TISSUE	13	4	9	1	3	3	2	0	4
C51-C55	VAGINA, UTERUS	1	0	1	0	0	0	1	0	0
C56-C57	OVARY AND ADNEXA	3	0	3	0	0	0	0	0	3
C60-C63	MALE GENITAL ORGAN	1	1	0	0	0	1	0	0	0
C64-C65	KIDNEY	6	2	4	2	4	0	0	0	0
C69	EYE AND ADNEXA	17	8	9	8	9	0	0	0	0
C71-C72	BRAIN AND CORD	23	11	12	6	5	1	7	4	0
C73	THYROID	1	0	1	0	0	0	1	0	0
C74-C75	ENDOCRINE GLAND	1	0	1	0	0	0	0	0	1
C76-C80	ILL-DEFINED SITE	3	1	2	1	0	0	1	0	1
C81	HODGKIN'S	4	4	0	0	0	2	0	2	0
C80-C89	LYMPHOMA	10	7	3	1	1	2	0	4	2
C91	LYMPHOID LEUKAEMIA	35	22	13	10	7	7	4	5	2
C92	MYELOID LEUKAEMIA	6	4	2	3	1	0	0	1	1
C94-C96	OTHER LEUKAEMIA	6	4	2	1	1	2	1	1	0

TABLE VIII

PRIMARY SITES AS TO AGE AND SEX

SITE / Age-Group	Under 1	1+	5+	10+	15+	20+	25+	30+	35+	40+	45+	50+	55+	60+	65+	70+	75+	80+	85+	90+	95+	Unknown	
GRAND TOTAL	7195	0	70	38	45	67	70	116	200	342	537	745	885	867	739	850	674	527	261	113	41	8	0
MALE	3370	0	37	19	30	39	32	44	68	102	154	269	361	385	405	477	404	322	150	53	16	3	0
FEMALE	3825	0	33	19	15	28	38	72	132	240	383	476	524	482	334	373	270	205	111	60	25	5	0

C00.0	Upper lip	T	5	0	0	0	0	0	0	0	0	0	0	1	0	0	0	1	1	1	1	0	0	0	
		M	2	0	0	0	0	0	0	0	0	0	0	0	1	0	0	0	0	0	0	1	0	0	0
		F	3	0	0	0	0	0	0	0	0	0	0	0	0	0	0	0	1	1	1	0	0	0	0
C00.1	Lower lip	T	16	0	0	0	0	0	0	0	0	2	0	0	0	1	2	2	6	1	2	0	0	0	
		M	3	0	0	0	0	0	0	0	0	0	0	0	0	1	1	0	0	1	0	0	0	0	
		F	13	0	0	0	0	0	0	0	0	2	0	0	0	0	1	2	6	0	2	0	0	0	
C00.5, C00.9	Lip, unspecified	T	3	0	0	0	0	0	0	0	0	0	0	1	0	0	0	0	1	0	1	0	0	0	
		M	0	0	0	0	0	0	0	0	0	0	0	0	0	0	0	0	0	0	0	0	0	0	
		F	3	0	0	0	0	0	0	0	0	0	0	1	0	0	0	0	1	0	1	0	0	0	
C01	Base of tongue	T	35	0	0	0	0	0	0	0	1	7	1	3	3	4	3	9	1	3	0	0	0	0	
		M	29	0	0	0	0	0	0	0	1	5	1	2	3	4	3	7	0	3	0	0	0	0	
		F	6	0	0	0	0	0	0	0	0	2	0	1	0	0	0	2	1	0	0	0	0	0	
C02.9	Tongue, unspecified	T	97	0	0	0	1	0	4	5	3	6	13	8	19	11	6	10	4	5	1	1	0	0	
		M	55	0	0	0	0	0	2	3	1	1	6	7	12	7	3	9	0	3	1	0	0	0	
		F	42	0	0	0	1	0	2	2	2	5	7	1	7	4	3	1	4	2	0	1	0	0	
C03	Gum	T	12	0	0	0	0	0	0	0	2	1	0	1	2	0	2	1	0	2	1	0	0	0	
		M	8	0	0	0	0	0	0	0	1	1	0	1	2	0	2	1	0	0	0	0	0	0	
		F	4	0	0	0	0	0	0	0	1	0	0	0	0	0	0	0	0	2	1	0	0	0	
C04	Floor of mouth	T	26	0	0	0	0	0	0	0	0	1	4	3	3	10	1	4	0	0	0	0	0	0	
		M	18	0	0	0	0	0	0	0	0	1	3	3	1	8	1	1	0	0	0	0	0	0	
		F	8	0	0	0	0	0	0	0	0	0	1	0	2	2	0	3	0	0	0	0	0	0	

TABLE VIII (cont.)

PRIMARY SITES AS TO AGE AND SEX

SITE / Age-Group			Under 1	1+	5+	10+	15+	20+	25+	30+	35+	40+	45+	50+	55+	60+	65+	70+	75+	80+	85+	90+	95+	Unknown	
C05	Palate	T	21	0	0	0	0	0	0	1	0	0	1	3	3	2	2	2	3	1	2	1	0	0	0
		M	16	0	0	0	0	0	0	1	0	0	1	3	3	2	2	1	1	1	0	1	0	0	0
		F	5	0	0	0	0	0	0	0	0	0	0	0	0	0	0	1	2	0	2	0	0	0	0
C06.0	Buccal mucosa	T	25	0	0	0	0	0	0	1	0	0	0	1	2	1	2	4	4	5	1	3	1	0	0
		M	9	0	0	0	0	0	0	0	0	0	0	0	1	1	1	2	1	2	0	1	0	0	0
		F	16	0	0	0	0	0	0	1	0	0	0	1	1	0	1	2	3	3	1	2	1	0	0
C06.2	Mouth part, unspecified	T	3	0	0	0	0	0	0	0	0	0	0	0	0	0	0	0	3	0	0	0	0	0	0
		M	3	0	0	0	0	0	0	0	0	0	0	0	0	0	0	0	3	0	0	0	0	0	0
		F	0	0	0	0	0	0	0	0	0	0	0	0	0	0	0	0	0	0	0	0	0	0	0
C07	Parotid gland	T	26	0	0	0	2	1	2	0	0	2	5	4	1	1	4	1	1	1	1	0	0	0	0
		M	15	0	0	0	2	1	0	0	0	1	2	1	1	1	4	0	0	1	1	0	0	0	0
		F	11	0	0	0	0	0	2	0	0	1	3	3	0	0	0	1	1	0	0	0	0	0	0
C08	Salivary gland, unspecified	T	9	0	0	0	0	0	0	1	1	2	0	1	0	0	0	3	0	0	0	1	0	0	0
		M	4	0	0	0	0	0	0	1	0	0	0	0	0	0	0	2	0	0	0	1	0	0	0
		F	5	0	0	0	0	0	0	0	1	2	0	1	0	0	0	1	0	0	0	0	0	0	0
C09	Tonsil	T	38	0	0	0	0	0	0	1	1	2	1	5	6	2	7	2	5	4	2	0	0	0	0
		M	31	0	0	0	0	0	0	0	0	2	1	4	4	2	7	2	4	3	2	0	0	0	0
		F	7	0	0	0	0	0	0	1	1	0	0	1	2	0	0	0	1	1	0	0	0	0	0
C10	Oropharynx	T	9	0	0	0	0	0	0	0	0	0	0	1	2	0	2	2	0	1	0	1	0	0	0
		M	8	0	0	0	0	0	0	0	0	0	0	1	2	0	2	2	0	1	0	0	0	0	0
		F	1	0	0	0	0	0	0	0	0	0	0	0	0	0	0	0	0	0	0	1	0	0	0
C11	Nasopharynx	T	145	0	0	0	1	0	3	3	4	17	15	26	24	20	15	10	4	2	0	0	1	0	0
		M	111	0	0	0	1	0	3	3	4	11	8	20	18	18	12	7	4	1	0	0	1	0	0
		F	34	0	0	0	0	0	0	0	0	6	7	6	6	2	3	3	0	1	0	0	0	0	0

TABLE VIII (cont.)

PRIMARY SITES AS TO AGE AND SEX

SITE / Age-Group			Under 1	1+	5+	10+	15+	20+	25+	30+	35+	40+	45+	50+	55+	60+	65+	70+	75+	80+	85+	90+	95+	Unknown	
C12	Pyriform sinus	T	21	0	0	0	0	0	0	0	0	1	1	6	2	2	2	6	1	0	0	0	0	0	
		M	21	0	0	0	0	0	0	0	0	0	1	1	6	2	2	2	6	1	0	0	0	0	0
		F	0	0	0	0	0	0	0	0	0	0	0	0	0	0	0	0	0	0	0	0	0	0	0
C13	Hypopharynx	T	19	0	0	0	0	0	0	0	0	1	1	7	2	1	1	2	0	1	2	0	1	0	0
		M	17	0	0	0	0	0	0	0	0	0	1	7	2	1	1	2	0	1	1	0	1	0	0
		F	2	0	0	0	0	0	0	0	0	1	0	0	0	0	0	0	0	0	1	0	0	0	0
C14	Oral and pharynx unspecified	T	12	0	0	0	0	0	0	0	0	1	2	2	2	3	1	0	0	1	0	0	0	0	0
		M	10	0	0	0	0	0	0	0	0	0	1	2	2	1	3	0	0	0	1	0	0	0	0
		F	2	0	0	0	0	0	0	0	0	0	0	0	0	1	0	1	0	0	0	0	0	0	0
C15	Esophagus	T	117	0	0	0	0	0	0	1	1	0	11	18	17	15	17	15	15	4	3	0	0	0	0
		M	94	0	0	0	0	0	0	0	0	0	9	17	12	14	14	12	12	3	1	0	0	0	0
		F	23	0	0	0	0	0	0	0	1	1	0	2	1	5	1	3	3	3	1	2	0	0	0
C16	Stomach	T	108	0	0	0	0	1	2	3	4	8	9	9	11	10	14	15	10	9	2	1	0	0	0
		M	52	0	0	0	0	0	1	0	2	2	3	5	4	3	11	11	4	5	1	0	0	0	0
		F	56	0	0	0	0	1	1	3	2	6	6	4	7	7	3	4	6	4	1	1	0	0	0
C17	Small intestine	T	28	0	0	0	0	0	1	0	1	1	3	4	1	4	6	2	3	2	0	0	0	0	0
		M	14	0	0	0	0	0	0	0	1	0	1	2	1	3	2	1	1	2	0	0	0	0	0
		F	14	0	0	0	0	0	1	0	0	1	2	2	0	1	4	1	2	0	0	0	0	0	0
C18	Colon	T	316	0	0	0	2	2	3	7	8	13	24	29	43	33	37	43	35	22	9	5	1	0	0
		M	158	0	0	0	1	0	3	1	3	5	12	14	18	19	15	27	22	14	4	0	0	0	0
		F	158	0	0	0	1	2	0	6	5	8	12	15	25	14	22	16	13	8	5	5	1	0	0

TABLE VIII (cont.)

PRIMARY SITES AS TO AGE AND SEX

SITE / Age-Group			Under 1	1+	5+	10+	15+	20+	25+	30+	35+	40+	45+	50+	55+	60+	65+	70+	75+	80+	85+	90+	95+	Unknown		
C19	Rectosigmoid	T	45	0	0	0	0	0	0	0	0	1	0	2	3	8	8	8	10	5	0	0	0	0	0	
		M	20	0	0	0	0	0	0	0	0	0	0	1	1	5	2	5	5	1	0	0	0	0	0	0
		F	25	0	0	0	0	0	0	0	0	1	0	1	2	3	6	3	5	4	0	0	0	0	0	0
C20	Rectum	T	233	0	0	0	1	0	1	0	3	3	14	18	36	30	29	31	23	19	13	7	4	1	0	
		M	126	0	0	0	1	0	1	0	2	1	7	8	14	18	21	16	10	11	8	4	3	1	0	0
		F	107	0	0	0	0	0	0	0	1	2	7	10	22	12	8	15	13	8	5	3	1	0	0	0
C21	Anus and anal canal	T	7	0	0	0	0	0	0	0	0	0	0	0	1	2	0	2	0	1	0	0	1	0	0	0
		M	3	0	0	0	0	0	0	0	0	0	0	0	1	1	0	0	0	0	0	0	1	0	0	0
		F	4	0	0	0	0	0	0	0	0	0	0	0	0	1	0	2	0	1	0	0	0	0	0	0
C22	Liver	T	655	0	4	0	0	1	1	5	11	20	42	82	102	103	88	84	63	30	13	6	0	0	0	0
		M	477	0	3	0	0	0	1	2	7	17	33	67	81	78	62	59	38	19	5	5	0	0	0	0
		F	178	0	1	0	0	1	0	3	4	3	9	15	21	25	26	25	25	11	8	1	0	0	0	0
C23	Gall bladder	T	21	0	0	0	0	0	0	0	0	0	1	4	3	2	3	3	2	1	1	0	1	0	0	0
		M	12	0	0	0	0	0	0	0	0	0	1	3	2	1	2	2	0	0	1	0	0	0	0	0
		F	9	0	0	0	0	0	0	0	0	0	0	1	1	1	1	1	2	1	0	0	1	0	0	0
C24	Biliary tract	T	31	0	0	0	0	0	0	0	0	0	2	1	7	2	5	4	4	4	2	0	0	0	0	0
		M	19	0	0	0	0	0	0	0	0	0	2	0	4	1	2	2	4	2	2	0	0	0	0	0
		F	12	0	0	0	0	0	0	0	0	0	0	1	3	1	3	2	0	2	0	0	0	0	0	0
C25	Pancreas	T	82	0	0	0	0	1	0	0	1	1	2	5	9	18	9	16	7	7	4	2	0	0	0	0
		M	36	0	0	0	0	0	0	0	0	0	1	2	6	5	6	9	3	3	1	0	0	0	0	0
		F	46	0	0	0	0	1	0	0	1	1	1	3	3	13	3	7	4	4	3	2	0	0	0	0
C30	Nasal cavity and middle ear	T	22	0	0	0	0	0	0	1	0	1	3	4	3	1	0	6	2	0	0	1	0	0	0	0
		M	16	0	0	0	0	0	0	1	0	1	1	3	3	1	0	4	1	0	0	1	0	0	0	0
		F	6	0	0	0	0	0	0	0	0	0	2	1	0	0	0	2	1	0	0	0	0	0	0	0

TABLE VIII (cont.)

PRIMARY SITES AS TO AGE AND SEX

SITE / Age-Group			Under 1	1+	5+	10+	15+	20+	25+	30+	35+	40+	45+	50+	55+	60+	65+	70+	75+	80+	85+	90+	95+	Unknown		
C31	Accessory sinus	T	8	0	0	0	0	0	0	0	0	0	0	1	1	3	0	2	1	0	0	0	0	0	0	
		M	5	0	0	0	0	0	0	0	0	0	0	1	1	2	0	1	0	0	0	0	0	0	0	0
		F	3	0	0	0	0	0	0	0	0	0	0	0	0	1	0	1	1	0	0	0	0	0	0	0
C32	Larynx	T	92	0	0	0	0	0	0	0	0	4	4	8	14	11	6	14	15	10	4	0	2	0	0	
		M	82	0	0	0	0	0	0	0	0	3	4	7	13	9	5	13	13	9	4	0	2	0	0	0
		F	10	0	0	0	0	0	0	0	0	1	0	1	1	2	1	1	2	1	0	0	0	0	0	0
C34	Lung and trachea	T	584	0	0	0	0	4	1	0	9	14	21	37	73	68	76	93	71	72	31	14	0	0	0	
		M	395	0	0	0	0	3	1	0	7	8	15	25	48	39	54	66	52	49	23	5	0	0	0	0
		F	189	0	0	0	0	1	0	0	2	6	6	12	25	29	22	27	19	23	8	9	0	0	0	0
C37	Thymus	T	7	0	0	0	0	0	0	0	0	0	2	1	0	1	2	1	0	0	0	0	0	0	0	0
		M	2	0	0	0	0	0	0	0	0	0	0	0	0	0	1	1	0	0	0	0	0	0	0	0
		F	5	0	0	0	0	0	0	0	0	0	2	1	0	1	1	0	0	0	0	0	0	0	0	0
C38	Mediastinum	T	6	0	0	0	3	2	0	0	1	0	0	0	0	0	0	0	0	0	0	0	0	0	0	0
		M	5	0	0	0	3	1	0	0	1	0	0	0	0	0	0	0	0	0	0	0	0	0	0	0
		F	1	0	0	0	0	1	0	0	0	0	0	0	0	0	0	0	0	0	0	0	0	0	0	0
C40 - C41	Bone and joint	T	62	0	2	3	7	10	5	1	8	7	4	6	3	2	1	0	1	1	1	0	0	0	0	0
		M	36	0	1	1	6	8	1	0	4	6	2	2	1	2	0	0	1	1	0	0	0	0	0	0
		F	26	0	1	2	1	2	4	1	4	1	2	4	2	0	1	0	0	0	1	0	0	0	0	0
C43	Melanoma of skin	T	24	0	0	0	0	1	1	0	0	2	1	3	2	3	3	2	2	2	2	0	0	0	0	0
		M	14	0	0	0	0	0	0	0	0	2	1	2	1	2	2	1	1	1	1	0	0	0	0	0
		F	10	0	0	0	0	1	1	0	0	0	0	1	1	1	1	1	1	1	1	0	0	0	0	0
C44	Skin	T	182	0	0	0	0	2	1	3	0	2	4	13	14	14	11	18	22	30	25	12	7	4	0	0
		M	86	0	0	0	0	1	0	0	0	0	2	5	9	8	7	11	9	18	8	5	2	1	0	0
		F	96	0	0	0	0	1	1	3	0	2	2	8	5	6	4	7	13	12	17	7	5	3	0	0

TABLE VIII (cont.)

PRIMARY SITES AS TO AGE AND SEX

SITE / Age-Group			Under 1	1+	5+	10+	15+	20+	25+	30+	35+	40+	45+	50+	55+	60+	65+	70+	75+	80+	85+	90+	95+	Unknown			
C46	Kaposi's sarcoma	T	1	0	0	0	0	0	0	1	0	0	0	0	0	0	0	0	0	0	0	0	0	0	0		
		M	1	0	0	0	0	0	0	1	0	0	0	0	0	0	0	0	0	0	0	0	0	0	0	0	
		F	0	0	0	0	0	0	0	0	0	0	0	0	0	0	0	0	0	0	0	0	0	0	0	0	
C47	Peripheral nerve	T	11	0	1	2	1	1	0	0	2	1	0	0	0	1	1	0	1	0	0	0	0	0	0		
		M	0	0	0	0	0	0	0	0	0	0	0	0	0	0	0	0	0	0	0	0	0	0	0	0	
		F	11	0	1	2	1	1	0	0	2	1	0	0	0	1	1	0	1	0	0	0	0	0	0	0	
C48	Retro and peritonium	T	4	0	1	0	0	0	0	0	0	0	1	1	0	1	0	0	0	0	0	0	0	0	0		
		M	1	0	0	0	0	0	0	0	0	0	0	1	0	0	0	0	0	0	0	0	0	0	0	0	
		F	3	0	1	0	0	0	0	0	0	0	0	1	0	0	1	0	0	0	0	0	0	0	0	0	
C49	Connective and soft tissue	T	94	0	2	3	3	3	2	4	12	5	9	9	5	8	6	10	6	4	1	1	1	0	0		
		M	45	0	1	3	0	1	0	2	7	1	4	6	1	6	3	6	2	0	1	1	0	0	0	0	
		F	49	0	1	0	3	2	2	2	5	4	5	3	4	2	3	4	4	4	0	0	1	0	0	0	
C50	Breast	T	1010	0	0	0	0	1	3	14	25	79	136	184	179	130	88	83	43	22	15	5	3	0	0		
		M	6	0	0	0	0	0	0	0	0	0	0	0	0	1	0	1	3	0	0	0	1	0	0	0	
		F	1004	0	0	0	0	1	3	14	25	79	136	184	179	129	88	82	40	22	15	5	2	0	0	0	
C51	Vulva	T	12	0	0	0	0	0	0	1	0	0	0	2	1	3	1	1	2	0	0	0	1	0	0	0	
		M	0	0	0	0	0	0	0	0	0	0	0	0	0	0	0	0	0	0	0	0	0	0	0	0	0
		F	12	0	0	0	0	0	0	1	0	0	0	2	1	3	1	1	2	0	0	0	1	0	0	0	
C52	Vagina	T	14	0	0	0	0	0	0	0	0	0	1	1	6	3	1	1	0	1	0	0	0	0	0	0	
		M	0	0	0	0	0	0	0	0	0	0	0	0	0	0	0	0	0	0	0	0	0	0	0	0	0
		F	14	0	0	0	0	0	0	0	0	0	0	1	1	6	3	1	1	0	1	0	0	0	0	0	0
C53	Cervix uteri	T	546	0	0	1	0	0	1	2	21	60	89	85	85	61	41	38	24	21	11	5	1	0	0	0	
		M	0	0	0	0	0	0	0	0	0	0	0	0	0	0	0	0	0	0	0	0	0	0	0	0	0
		F	546	0	0	1	0	0	1	2	21	60	89	85	85	61	41	38	24	21	11	5	1	0	0	0	0

TABLE VIII (cont.)

PRIMARY SITES AS TO AGE AND SEX

SITE / Age-Group			Under 1	1+	5+	10+	15+	20+	25+	30+	35+	40+	45+	50+	55+	60+	65+	70+	75+	80+	85+	90+	95+	Unknown			
C54	Corpus uteri	T	151	0	0	0	0	0	0	2	1	3	7	17	35	32	14	19	7	8	4	2	0	0	0		
		M	0	0	0	0	0	0	0	0	0	0	0	0	0	0	0	0	0	0	0	0	0	0	0	0	
		F	151	0	0	0	0	0	0	0	2	1	3	7	17	35	32	14	19	7	8	4	2	0	0	0	
C55	Uterus	T	6	0	0	0	0	0	0	0	0	0	0	2	0	2	2	0	0	0	0	0	0	0	0	0	
		M	0	0	0	0	0	0	0	0	0	0	0	0	0	0	0	0	0	0	0	0	0	0	0	0	0
		F	6	0	0	0	0	0	0	0	0	0	0	2	0	2	2	0	0	0	0	0	0	0	0	0	0
C56	Ovary	T	177	0	0	0	3	3	2	8	10	10	19	20	28	29	18	12	10	2	2	1	0	0	0	0	
		M	0	0	0	0	0	0	0	0	0	0	0	0	0	0	0	0	0	0	0	0	0	0	0	0	0
		F	177	0	0	0	3	3	2	8	10	10	19	20	28	29	18	12	10	2	2	1	0	0	0	0	0
C57	Female genital organ	T	1	0	0	0	0	0	0	0	0	0	0	1	0	0	0	0	0	0	0	0	0	0	0	0	
		M	0	0	0	0	0	0	0	0	0	0	0	0	0	0	0	0	0	0	0	0	0	0	0	0	0
		F	1	0	0	0	0	0	0	0	0	0	0	1	0	0	0	0	0	0	0	0	0	0	0	0	0
C58	Placenta	T	3	0	0	0	0	0	0	1	1	0	1	0	0	0	0	0	0	0	0	0	0	0	0	0	
		M	0	0	0	0	0	0	0	0	0	0	0	0	0	0	0	0	0	0	0	0	0	0	0	0	0
		F	3	0	0	0	0	0	0	0	1	1	0	1	0	0	0	0	0	0	0	0	0	0	0	0	0
C60	Penis	T	17	0	0	0	0	0	0	0	0	1	2	3	1	0	3	2	2	2	0	0	1	0	0	0	
		M	17	0	0	0	0	0	0	0	0	1	2	3	1	0	3	2	2	2	0	0	1	0	0	0	0
		F	0	0	0	0	0	0	0	0	0	0	0	0	0	0	0	0	0	0	0	0	0	0	0	0	0
C61	Prostate	T	525	0	0	1	0	0	0	0	0	1	2	4	16	49	54	135	118	96	34	13	2	0	0	0	
		M	525	0	0	1	0	0	0	0	0	1	2	4	16	49	54	135	118	96	34	13	2	0	0	0	0
		F	0	0	0	0	0	0	0	0	0	0	0	0	0	0	0	0	0	0	0	0	0	0	0	0	0
C62	Testis	T	5	0	0	0	0	0	0	1	0	1	1	2	0	0	0	0	0	0	0	0	0	0	0	0	
		M	5	0	0	0	0	0	0	1	0	1	1	2	0	0	0	0	0	0	0	0	0	0	0	0	0
		F	0	0	0	0	0	0	0	0	0	0	0	0	0	0	0	0	0	0	0	0	0	0	0	0	0

TABLE VIII (cont.)

PRIMARY SITES AS TO AGE AND SEX

SITE / Age-Group			Under 1	1+	5+	10+	15+	20+	25+	30+	35+	40+	45+	50+	55+	60+	65+	70+	75+	80+	85+	90+	95+	Unknown		
C64	Kidney, exclude renal pelvis	T	69	0	6	0	0	1	0	1	0	2	3	6	10	4	12	9	11	3	1	0	0	0	0	
		M	36	0	2	0	0	0	0	0	0	0	1	4	8	3	9	3	5	1	0	0	0	0	0	0
		F	33	0	4	0	0	1	0	1	0	2	2	2	2	1	3	6	6	2	1	0	0	0	0	0
C65	Renal pelvis	T	15	0	0	0	0	0	0	0	0	2	1	0	2	1	4	5	0	0	0	0	0	0	0	
		M	10	0	0	0	0	0	0	0	0	2	1	0	1	0	3	3	0	0	0	0	0	0	0	
		F	5	0	0	0	0	0	0	0	0	0	0	0	0	1	1	1	2	0	0	0	0	0	0	
C66	Ureter	T	8	0	0	0	0	0	0	0	0	0	0	1	0	1	1	1	1	1	2	0	0	0	0	
		M	3	0	0	0	0	0	0	0	0	0	0	1	0	0	0	1	1	0	0	0	0	0	0	
		F	5	0	0	0	0	0	0	0	0	0	0	0	0	0	1	1	0	0	1	2	0	0	0	
C67	Bladder	T	177	0	0	0	0	0	1	0	1	4	5	8	8	23	24	29	20	33	12	5	3	1	0	
		M	132	0	0	0	0	0	1	0	1	3	3	6	7	19	20	18	14	27	9	3	0	1	0	
		F	45	0	0	0	0	0	0	0	0	1	2	2	1	4	4	11	6	6	3	2	3	0	0	
C68	Other urinary organ	T	2	0	0	0	0	0	0	0	0	0	0	0	0	1	1	0	0	0	0	0	0	0	0	
		M	0	0	0	0	0	0	0	0	0	0	0	0	0	0	0	0	0	0	0	0	0	0	0	
		F	2	0	0	0	0	0	0	0	0	0	0	0	0	1	1	0	0	0	0	0	0	0	0	
C69	Eye and adnexa	T	34	0	17	0	0	0	1	1	0	5	1	1	1	1	1	3	0	0	1	1	0	0	0	
		M	18	0	8	0	0	0	1	0	0	3	0	1	1	0	1	3	0	0	0	0	0	0	0	
		F	16	0	9	0	0	0	0	1	0	2	1	0	0	1	0	0	0	0	1	1	0	0	0	
C70	Meninges	T	18	0	0	0	0	2	0	1	1	0	4	0	5	2	0	0	1	1	1	0	0	0	0	
		M	3	0	0	0	0	1	0	1	0	0	0	0	0	0	0	0	0	1	0	0	0	0	0	
		F	15	0	0	0	0	1	0	0	1	0	4	0	5	2	0	0	1	1	0	0	0	0	0	
C71	Brain	T	79	0	11	8	4	4	4	3	3	3	10	5	4	6	7	4	2	1	0	0	0	0	0	
		M	45	0	6	1	4	3	3	3	2	1	6	1	2	3	6	3	1	0	0	0	0	0	0	
		F	34	0	5	7	0	1	1	0	1	2	4	4	2	3	1	1	1	1	0	0	0	0	0	

TABLE VIII (cont.)

PRIMARY SITES AS TO AGE AND SEX

SITE / Age-Group			Under 1	1+	5+	10+	15+	20+	25+	30+	35+	40+	45+	50+	55+	60+	65+	70+	75+	80+	85+	90+	95+	Unknown			
C72	Other nervous system	T	1	0	0	0	0	0	0	0	0	0	1	0	0	0	0	0	0	0	0	0	0	0	0		
		M	0	0	0	0	0	0	0	0	0	0	0	0	0	0	0	0	0	0	0	0	0	0	0	0	
		F	1	0	0	0	0	0	0	0	0	0	0	1	0	0	0	0	0	0	0	0	0	0	0	0	
C73	Thyroid	T	256	0	0	1	0	6	14	24	25	28	24	31	29	26	6	18	11	11	1	0	1	0	0		
		M	60	0	0	0	0	0	4	7	4	6	2	7	6	9	2	4	2	5	1	0	1	0	0	0	
		F	196	0	0	1	0	6	10	17	21	22	22	24	23	17	4	14	9	6	0	0	0	0	0	0	
C74	Adrenal gland	T	1	0	0	0	0	0	0	0	0	0	1	0	0	0	0	0	0	0	0	0	0	0	0	0	
		M	0	0	0	0	0	0	0	0	0	0	0	0	0	0	0	0	0	0	0	0	0	0	0	0	0
		F	1	0	0	0	0	0	0	0	0	0	0	1	0	0	0	0	0	0	0	0	0	0	0	0	0
C75	Other endocrine gland	T	7	0	0	0	1	2	1	0	1	1	0	0	0	1	0	0	0	0	0	0	0	0	0	0	
		M	3	0	0	0	0	2	0	0	0	1	0	0	0	0	0	0	0	0	0	0	0	0	0	0	
		F	4	0	0	0	1	0	1	0	1	0	0	0	0	1	0	0	0	0	0	0	0	0	0	0	
C76 - C80	Unspecified site	T	165	0	1	1	1	2	0	1	1	4	6	21	12	27	33	17	15	14	6	2	1	0	0	0	
		M	86	0	1	0	0	2	0	1	0	1	3	11	10	14	16	11	3	9	3	1	0	0	0	0	
		F	79	0	0	1	1	0	0	0	1	3	3	10	2	13	17	6	12	5	3	1	1	0	0	0	
C81	Hodgkin's disease	T	34	0	0	2	2	2	3	3	6	3	2	2	1	2	2	1	0	1	0	2	0	0	0	0	
		M	26	0	0	2	2	2	2	2	3	3	2	2	1	1	2	1	0	1	0	0	0	0	0	0	
		F	8	0	0	0	0	0	1	1	3	0	0	0	0	1	0	0	0	0	0	2	0	0	0	0	
C82 - C85	Malignant lymphoma	T	268	0	2	2	6	5	5	9	13	14	17	20	26	32	31	36	22	14	10	2	2	0	0	0	
		M	152	0	1	2	4	5	3	5	7	8	12	13	13	15	22	16	12	6	6	1	1	0	0	0	
		F	116	0	1	0	2	0	2	4	6	6	5	7	13	17	9	20	10	8	4	1	1	0	0	0	
C90	Multiple myeloma	T	77	0	0	0	0	0	0	1	0	3	4	5	14	10	15	11	4	8	1	1	0	0	0	0	
		M	33	0	0	0	0	0	0	1	0	2	0	2	9	3	7	2	2	4	0	1	0	0	0	0	
		F	44	0	0	0	0	0	0	0	0	1	4	3	5	7	8	9	2	4	1	0	0	0	0	0	

TABLE VIII (cont.)

PRIMARY SITES AS TO AGE AND SEX

SITE / Age-Group			Under 1	1+	5+	10+	15+	20+	25+	30+	35+	40+	45+	50+	55+	60+	65+	70+	75+	80+	85+	90+	95+	Unknown		
C91.0	Acute lymphoblastic leukaemia	T	67	0	17	11	7	5	8	3	2	2	4	1	1	2	1	2	1	0	0	0	0	0	0	
		M	45	0	10	7	5	4	6	1	2	2	4	0	0	2	0	1	1	0	0	0	0	0	0	0
		F	22	0	7	4	2	1	2	2	0	0	0	1	1	0	1	1	0	0	0	0	0	0	0	0
C91.1	Chronic lymphocytic leukaemia	T	27	0	0	0	0	0	0	0	0	0	2	1	2	2	1	4	4	5	4	2	0	0	0	
		M	20	0	0	0	0	0	0	0	0	0	1	1	1	1	1	3	3	3	4	2	0	0	0	
		F	7	0	0	0	0	0	0	0	0	0	1	0	1	1	0	1	1	2	0	0	0	0	0	
C91.4	Lymphoid leukaemia unspecified	T	1	0	0	0	0	0	0	0	0	0	0	0	0	0	1	0	0	0	0	0	0	0	0	
		M	1	0	0	0	0	0	0	0	0	0	0	0	0	0	1	0	0	0	0	0	0	0	0	
		F	0	0	0	0	0	0	0	0	0	0	0	0	0	0	0	0	0	0	0	0	0	0	0	0
C92.0	Acute myeloid leukaemia	T	77	0	3	0	2	1	3	1	12	3	9	6	10	4	3	7	8	4	1	0	0	0	0	
		M	40	0	2	0	1	0	3	0	8	0	6	3	5	1	1	2	4	3	1	0	0	0	0	
		F	37	0	1	0	1	1	0	1	4	3	3	3	5	3	2	5	4	1	0	0	0	0	0	
C92.1	Chronic myeloid leukaemia	T	44	0	0	0	0	3	2	6	5	6	6	4	3	3	2	1	3	0	0	0	0	0	0	
		M	30	0	0	0	0	3	2	5	4	4	3	2	2	2	0	1	2	0	0	0	0	0	0	
		F	14	0	0	0	0	0	0	1	1	2	3	2	1	1	2	0	1	0	0	0	0	0	0	
C92.4	Myeloid leukaemia, unspecified	T	11	0	1	0	0	0	1	0	2	1	1	0	3	2	0	0	0	0	0	0	0	0	0	
		M	4	0	1	0	0	0	0	0	1	1	0	0	0	1	0	0	0	0	0	0	0	0	0	
		F	7	0	0	0	0	0	1	0	1	0	1	0	3	1	0	0	0	0	0	0	0	0	0	
C94 - C95	Leukaemia of unspecified type	T	28	0	2	3	1	1	1	1	1	3	4	1	2	1	0	1	2	1	1	1	0	1	0	
		M	11	0	1	2	1	1	0	0	0	2	1	0	0	1	0	0	1	0	1	0	0	0	0	
		F	17	0	1	1	0	0	1	1	1	1	3	1	2	0	0	1	1	1	0	1	0	1	0	

TABLE IX

THE COMMON SITE OF MALIGNANCY BY PERCENTAGE

Site	PERCENTAGE				
	2003	2004	2005	2006	2007
Total Cases	4,663	4,940	5,720	6,377	7,195
BREAST	7.72	14.45	13.67	13.22	14.04
LIVER	4.59	6.05	7.94	9.75	9.10
COLON AND RECTUM	7.72	7.51	7.81	7.62	8.26
LUNG	6.30	7.57	7.41	8.15	8.12
CERVIX	13.25	10.22	8.37	8.20	7.59
PROSTATE	4.59	4.68	5.00	7.40	7.30
LYMPHOMA	6.46	5.55	5.72	3.48	4.20
THYROID	2.19	2.57	3.32	2.84	3.56
LEUKAEMIA	6.30	5.69	5.03	3.69	3.54
ORAL CAVITY	3.71	3.12	3.06	2.59	3.38

TABLE IX.I

THE COMMON SITE OF MALIGNANCY BY PERCENT 2003 - 2007

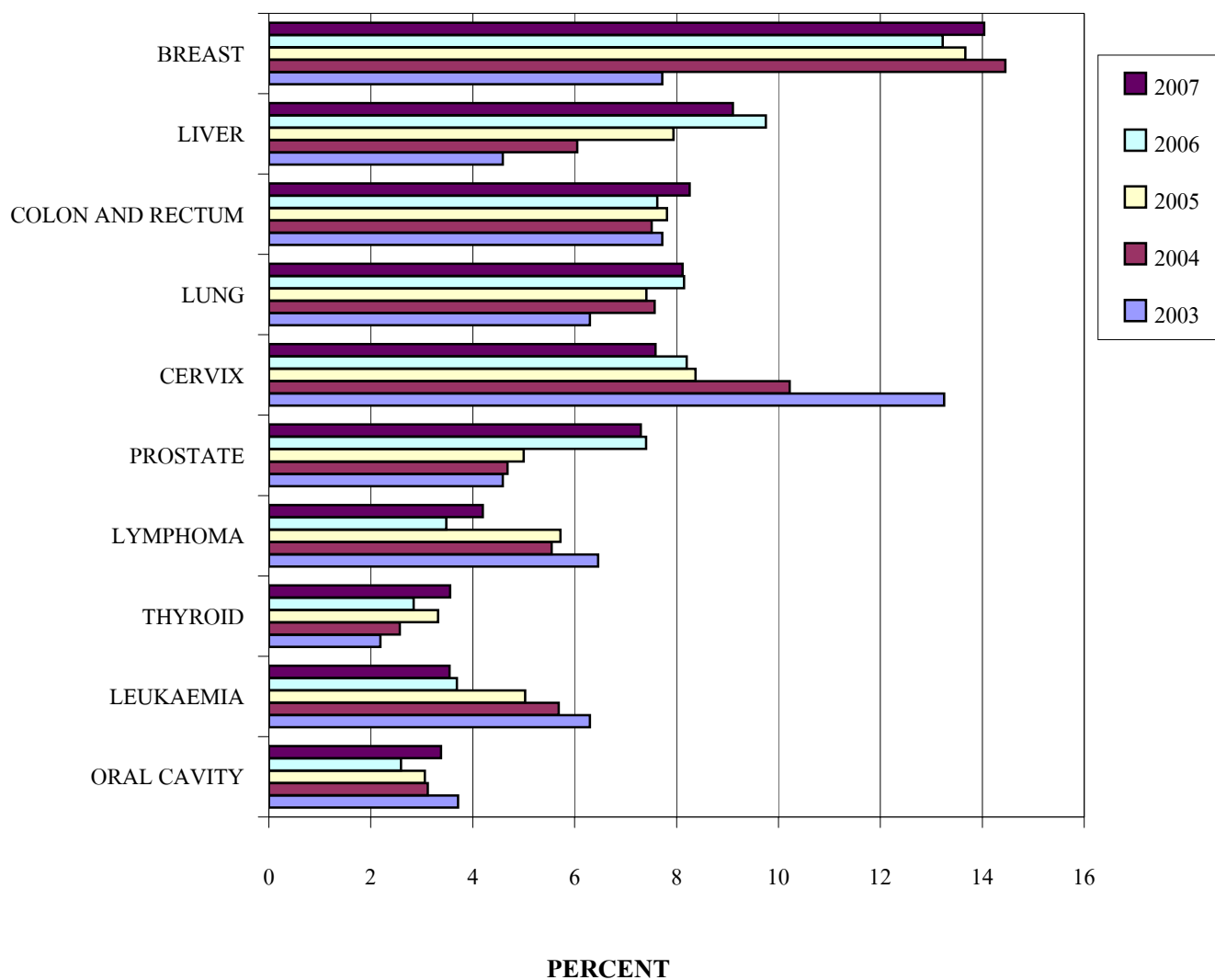


TABLE X
THE COMMON MALIGNANCY IN MALE

SITE	Male	%
ALL SITES	3,370	100.00
PROSTATE	525	15.58
LIVER	477	14.15
LUNG	395	11.72
COLON AND RECTUM	304	9.02
LYMPHOMA	178	5.28
LEUKAEMIA	151	4.48
ORAL CAVITY	143	4.24
BLADDER	132	3.92
NASOPHARYNX	111	3.29
SKIN AND MALIGNANT MELANOMA	100	2.97

TABLE X.I
THE COMMON MALIGNANCY IN MALE

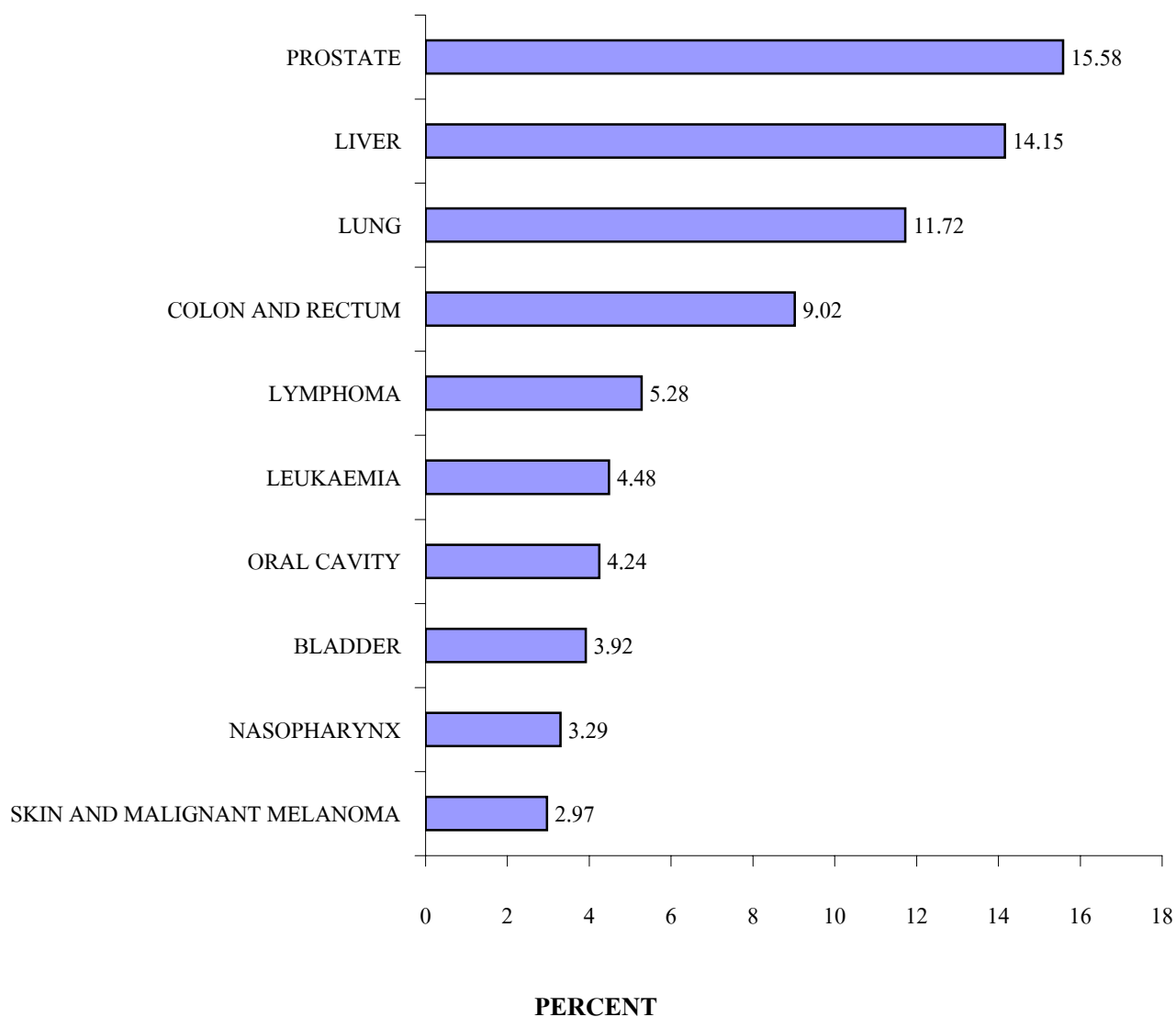


TABLE XI
THE COMMON MALIGNANCY IN FEMALE

Site	Female	%
All Sites	3,825	100.00
BREAST	1004	26.25
CERVIX	546	14.27
COLON AND RECTUM	290	7.58
THYROID	196	5.12
LUNG	189	4.94
LIVER	178	4.65
OVARY	177	4.63
CORPUS UTERI	157	4.10
LYMPHOMA	124	3.24
SKIN AND MALIGNANT MELANOMA	106	2.77

TABLE XI.I
THE COMM MALIGNANCY IN FEMALE

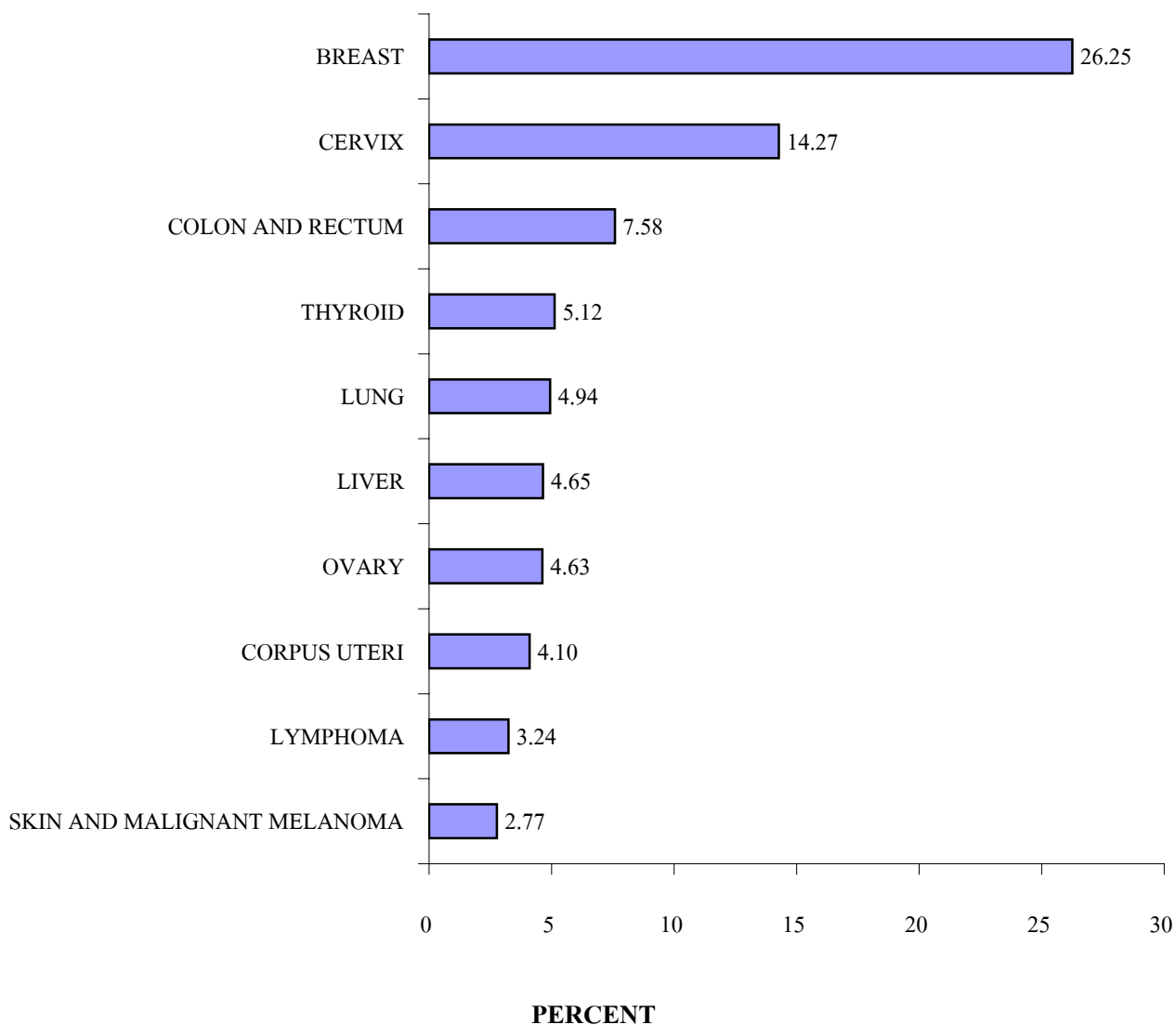


TABLE XII
NUMBER OF CASES OF MALIGNANCY BY PROVINCE

PROVINCE	MALE	FEMALE	TOTAL
ALL PROVINCE	3,370	3,825	7,195
Amnat Chareon	4	6	10
Ang Thong	21	16	37
Buri Ram	24	33	57
Chachoengsao	15	22	37
Chai Nat	22	18	40
Chaiyaphum	26	18	44
Chanthaburi	22	21	43
Chiang Mai	9	10	19
Chiang Rai	7	7	14
Chon Buri	47	57	104
Chumphon	36	45	81
Kalasin	6	5	11
Kamphaeng Phet	22	19	41
Kanchanaburi	74	77	151
Khon kaen	8	12	20
Krabi	6	6	12
Krung Thep Maha Nakhon	1,268	1,418	2,686
Lampang	8	8	16
Lamphun	3	3	6
Loei	6	6	12
Lop Buri	31	23	54
Mae Hong Son	1	0	1
Maha Sarakham	18	4	22
Mukdahan	1	7	8
Nakhon Nayok	9	6	15
Nakhon Pathom	9	8	17
Nakhon Phanom	222	257	479
Nakhon Ratchasima	41	39	80
Nakhon Si Thammarat	42	45	87
Nan	3	4	7
Narathiwat	5	3	8
Nong Bue Lumphu	6	5	11
Nong Khai	4	11	15
Nonthaburi	185	241	426
Pathum Thani	39	64	103
Pattani	2	2	4
Phangnga	7	13	20
Phatthalung	5	7	12
Phayao	2	5	7
Phetchabun	21	23	44
Phetchaburi	64	68	132
Phichit	20	28	48
Phitsanulok	9	16	25
Phra Nakhon Si Ayutthaya	62	56	118
Phrae	9	9	18

TABLE XII
NUMBER OF CASES OF MALIGNANCY BY PROVINCE

PROVINCE	MALE	FEMALE	TOTAL
Phuket	13	11	24
Prachin Buri	14	20	34
Prachuap Khiri Khan	50	78	128
Ranong	11	9	20
Ratchaburi	142	175	317
Rayong	28	26	54
Roi Et	30	25	55
Sa Keaw	19	13	32
Sakon Nakhon	19	7	26
Samut Prakan	87	114	201
Samut Sakhon	60	130	190
Samut Songkhram	35	36	71
Saraburi	15	33	48
Si Sa Ket	19	19	38
Sing Buri	12	13	25
Songkhla	15	9	24
Sukhothai	13	19	32
Suphan Buri	110	132	242
Surat Thani	47	33	80
Surin	22	19	41
Tak	10	16	26
Trang	5	12	17
Trat	10	11	21
Ubon Ratchathani	25	23	48
Udon Thani	11	10	21
Uthai Thani	12	12	24
Uttaradit	12	10	22
Yala	4	3	7
Yasothon	8	2	10

Not mention chanvat 115 records

TABLE XIII
OCCUPATION

OCCUPATION	NORTH	N-EAST	CENTRAL	SOUTH	TOTAL
FARMER	0	0	5	2	7
FISHERY	0	0	7	0	7
HOUSEWIFE	74	107	2,001	97	2,279
MERCANTILE	42	62	700	48	852
OFFICIAL	66	101	909	88	1,164
PLANTATION	34	143	333	68	578
PRIEST	2	3	35	4	44
WORKER	76	136	1,652	72	1,936
UNOCCUPY	9	28	166	13	216
NOT RECORD	0	0	0	0	0
TOTAL	303	580	5,808	392	7,083

Not Record Both Occupation And Province = 112

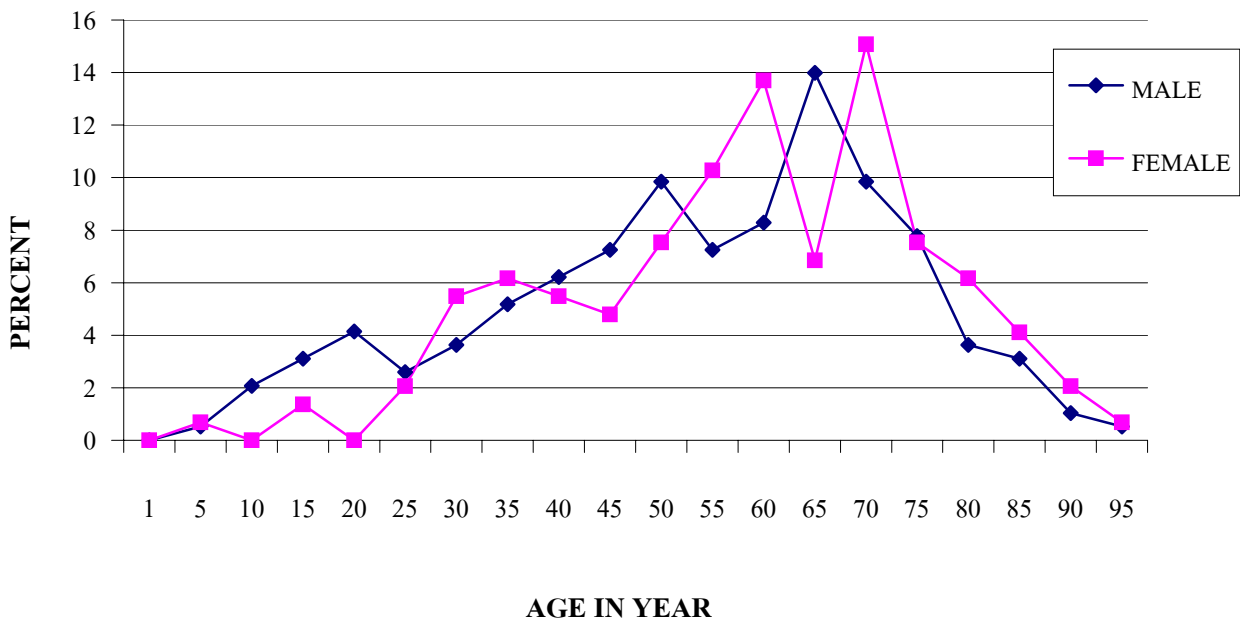
TABLE XIV
MALIGNANT LYMPHOMA BY SITE

SITE	MALE	FEMALE	TOTAL
ALL SITE	193	146	339
TONGUE	1	2	3
GUM	1	0	1
PALATE	1	0	1
SALIVARY GLAND	1	1	2
TONSIL	1	4	5
NASOPHARYNX	1	0	1
HYPOPHARYNX	1	0	1
STOMACH	2	2	4
SMALL BOWEL	1	1	2
LARGE BOWEL	0	1	1
LUNG	0	2	2
SKIN	1	4	5
BREAST	0	3	3
EYE AND ADNEXA	3	1	4
BRAIN	1	0	1
THYROID	0	1	1
PRIMARY IN LYMPH NODE	178	124	302

TEBLE XV
MALIGNANT LYMPHOMA BY AGE

AGE	MALE		FEMALE		TOTAL	
	n	%	n	%	n	%
ALL AGE	193	100.00	146	100.00	339	100.00
Unkown	0	0.00	0	0.00	0	0.00
1+	1	0.52	1	0.68	2	0.59
5+	4	2.07	0	0.00	4	1.18
10+	6	3.11	2	1.37	8	2.36
15+	8	4.15	0	0.00	8	2.36
20+	5	2.59	3	2.05	8	2.36
25+	7	3.63	8	5.48	15	4.42
30+	10	5.18	9	6.16	19	5.60
35+	12	6.22	8	5.48	20	5.90
40+	14	7.25	7	4.79	21	6.19
45+	19	9.84	11	7.53	30	8.85
50+	14	7.25	15	10.27	29	8.55
55+	16	8.29	20	13.70	36	10.62
60+	27	13.99	10	6.85	37	10.91
65+	19	9.84	22	15.07	41	12.09
70+	15	7.77	11	7.53	26	7.67
75+	7	3.63	9	6.16	16	4.72
80+	6	3.11	6	4.11	12	3.54
85+	2	1.04	3	2.05	5	1.47
90+	1	0.52	1	0.68	2	0.59
95+	0	0.00	0	0.00	0	0.00

TABLE XV.I
MALIGNANT LYMPHOMA BY AGE



CANCER BY REGION

2007

