



SIRIRAJ CANCER REGISTRY

2021



SIRIRAJ CANCER CENTER
FACULTY OF MEDICINE SIRIRAJ HOSPITAL
MAHIDOL UNIVERSITY
ISSN 00857- 3840

SIRIRAJ CANCER REGISTRY

2021



EDITOR

Assoc.Prof. Vitoon Chinswangwatanakul MD, Ph.D.

SIRIRAJ CANCER CENTER
FACULTY OF MEDICINE SIRIRAJ HOSPITAL
MAHIDOL UNIVERSITY THAILAND
ISSN 00857-3840

PUBLISHED BY: Siriraj Cancer Center, Siriraj Hospital, 2 Wang-lang Road, Bangkok 10700, THAILAND Tel. +662-419-4471-2

<https://www.si.mahidol.ac.th/th/department/cancer/>

Introduction

It has been over two years now, since the beginning of the COVID-19 pandemic. During the disaster causing by one of the worst endemic crisis in history of mankind, such a suffering has spread globally. The taskforce in our hospital has been disturbed tremendously because most of the man power was shifted to cope with the high volume of patients infected with COVID-19. Patients with cancer have also been postponed or their treatments were delayed due to shutting down of the hospitals and communities. Limitation of the office hours and work-from-home policy caused the difficulty in data access of our coder team. However, by the unity of everyone in the Faculty of Medicine Siriraj Hospital, our cancer services have been continued despite the fact that both patients and healthcare providers remained in difficult situation. The decreasing numbers of new cancer patients shown in this report remained as the influence from COVID-19 burden. Finally, we put every effort to complete and release the information regarding the 53rd Annual Report of Siriraj Hospital-based Cancer Registration a bit late after the schedule. The “Siriraj Cancer Registration 2021” Annual Report was the result of intensive analysis from our coders and IT team. Without the teamwork and support from our medical consultants amidst COVID-19 pandemic, this report would not be possible. In the year 2021, we still served 2,340,035 out-patient visits. Among those patients, 538,339 visits were new patients, including 5,159 new visits of patients with cancer who were treated in the Faculty of Medicine Siriraj Hospital.

I would like to thank generous support from the Medical Record Service, Medical Information Technology Service, Department of Pathology, Clinical Pathology, Microbiology, Immunology, Radiology, Surgery, Medicine, Orthopedic Surgery, Ophthalmology, Oto-rhino-laryngology, Pediatrics, Obstetrics and Gynecology, for constantly providing us the constructive data. I would like to thank members of the Siriraj Cancer Center Organization Committee and all staffs in Siriraj Cancer Center who worked very hard during such a challenging situation. At least we should realize that how valuable our life would be. It would be very grateful if the information in this report could be used for improving the quality of service as well as the quality of life for patients with cancer.



Assoc.Prof. Vitoon Chinswangwatanakul MD, Ph.D.

Chairman of Siriraj Cancer Center

Faculty of Medicine Siriraj Hospital, Mahidol University

SIRIRAJ CANCER CENTER

SIRIRAJ CANCER RIGISTRY 2021

Table of contents

Table I:	Number of patients	1
Table II:	Quality of diagnosis	1
Table III:	Primary site	1
Table IV:	Incidence by age group	8
	Figure IV.I: Incidence by age group	8
Table V:	Primary site by age group	9
Table VI:	Pathology according to site	28
Table VII:	Primary site in childhood by age group	41
Table VIII:	Lymphoma pathology according to site	42
Table IX:	Lymphoma by pathology	49
Table X:	Lymphoma incidence by age group	50
	Figure X.I: Lymphoma incidence by age group	50
Table XI:	Leading cancer	51
	Figure XI.I: Leading cancer	51
Table XII:	Leading cancer in male	52
	Figure XII.I: Leading cancer in male	52
Table XIII:	Leading cancer in female	53
	Figure XIII.I: Leading cancer in female	53
Table XIV:	5 year trends of incidence (2017 - 2021)	54
	Figure XIV.I: 5 year trends of incidence (2017 - 2021)	54

2021

TABLE I : NUMBER OF PATIENTS

Type of patient	No. of cases
Total No. of patient visits	2,340,035
Total No. of patients	538,339
Total No. of new cancer	5,159
Cancer incidence was	0.96%

TABLE II : QUALITY OF DIAGNOSIS

Diagnosed by	Number	Percentage
Histological Pathology	4,760	92.27
Clinical & Imaging	399	7.73
Total	5,159	100.00

TABLE III : PRIMARY SITE

CODE	SITE	No. of Cases			%
		MALE	FEMALE	TOTAL	
	GRAND TOTAL	2,412	2,747	5,159	100.00
C00 - C14 LIP, ORAL CAVITY AND PHARYNX		203	91	294	5.70
C000	External Lip: Upper NOS	1	0	1	0.02
C001	External Lip: Lower NOS	2	2	4	0.08
C004	Lip: Lower Mucosa	0	1	1	0.02
C019	Tongue: Base NOS	16	1	17	0.33
C021	Tongue: Border, Tip	0	1	1	0.02
C022	Tongue: Ventral NOS	1	0	1	0.02
C029	Tongue: NOS	36	21	57	1.10
C030	Gum: Upper	1	6	7	0.14
C031	Gum: Lower	5	4	9	0.17
C041	Mouth: Lateral Floor	1	0	1	0.02
C049	Floor of Mouth NOS	8	0	8	0.16
C050	Hard Palate	2	1	3	0.06
C051	Soft Palate NOS	3	1	4	0.08
C052	Uvula	1	0	1	0.02
C060	Cheek Mucosa	1	3	4	0.08
C062	Retromolar Area	4	0	4	0.08
C079	Parotid Gland	4	7	11	0.21
C080	Submandibular Gland	3	1	4	0.08

TABLE III : PRIMARY SITE (cont.)

CODE	SITE	No. of Cases			%
		MALE	FEMALE	TOTAL	
C081	Sublingual Gland	1	1	2	0.04
C099	Tonsil NOS	18	4	22	0.43
C102	Oropharynx: Lateral Wall	1	0	1	0.02
C109	Oropharynx NOS	10	2	12	0.23
C113	Nasopharynx: Anterior Wall	0	1	1	0.02
C119	Nasopharynx NOS	45	29	74	1.43
C129	Pyriiform Sinus	26	2	28	0.54
C138	Hypopharynx: Overlapping	1	0	1	0.02
C139	Hypopharynx NOS	11	2	13	0.25
C079 MULTIPLE PRIMARY PAROTID GLAND		0	1	1	0.02
C490	Connective: Head, Face, Neck	0	1	1	0.02
C119 MULTIPLE PRIMARY NASOPHARYNX NOS		1	0	1	0.02
C770	Lymph Nodes: HeadFaceNeck	1	0	1	0.02
C15 - C26 DIGESTIVE ORGANS		764	487	1251	24.25
C150	Esophagus: Cervical	6	1	7	0.14
C151	Esophagus: Thoracic	20	1	21	0.41
C153	Esophagus: Upper Third	3	1	4	0.08
C154	Esophagus: Middle Third	3	1	4	0.08
C155	Esophagus: Lower Third	2	2	4	0.08
C158	Esophagus: Overlapping	9	0	9	0.17
C159	Esophagus NOS	22	1	23	0.45
C160	Stomach: Cardia NOS	13	4	17	0.33
C161	Stomach: Fundus	1	0	1	0.02
C162	Stomach: Body	4	11	15	0.29
C163	Stomach: Pyl Antrum	5	10	15	0.29
C164	Stomach: Pylorus	1	0	1	0.02
C165	Stomach: Less Curv	1	0	1	0.02
C168	Stomach: Overlapping	1	2	3	0.06
C169	Stomach, NOS	20	31	51	0.99
C170	Duodenum	5	5	10	0.19
C171	Jejunum	5	2	7	0.14
C172	Ileum	0	1	1	0.02
C179	Small Intestine, NOS	1	0	1	0.02
C180	Colon: Caecum	8	12	20	0.39
C181	Colon: Appendix	3	5	8	0.16
C182	Colon: Ascending	13	19	32	0.62
C183	Colon: Hepatic Flexure	16	4	20	0.39
C184	Colon: Transverse	5	5	10	0.19
C185	Colon: Splenic Flexure	6	3	9	0.17
C186	Colon: Descending	8	10	18	0.35

TABLE III : PRIMARY SITE (cont.)

CODE	SITE	No. of Cases			%
		MALE	FEMALE	TOTAL	
C187	Colon: Sigmoid	59	46	105	2.04
C188	Colon: Overlapping	3	1	4	0.08
C189	Colon NOS	3	3	6	0.12
C199	Rectosigmoid Junction	26	9	35	0.68
C209	Rectum NOS	97	74	171	3.31
C211	Anal Canal	4	6	10	0.19
C218	Rectum: Overlapping	1	0	1	0.02
C220	Liver	280	99	379	7.35
C221	Intrahepatic Bile Duct	38	25	63	1.22
C239	Gallbladder	5	12	17	0.33
C240	Extrahepatic Bile Duct	11	12	23	0.45
C241	Ampulla of Vater	8	2	10	0.19
C250	Pancreas: Head	27	33	60	1.16
C251	Pancreas: Body	3	11	14	0.27
C252	Pancreas: Tail	3	2	5	0.10
C253	Pancreatic Duct	0	2	2	0.04
C257	Pancreas Other	2	0	2	0.04
C258	Pancreas: Overlapping	1	3	4	0.08
C259	Pancreas NOS	12	16	28	0.54
C30 - C39 RESPIRATORY AND INTRATHORACIC ORGANS		391	255	646	12.52
C300	Nasal Cavity	12	6	18	0.35
C310	Maxillary Sinus	6	2	8	0.16
C311	Ethmoid Sinus	1	1	2	0.04
C313	Sphenoid Sinus	1	0	1	0.02
C320	Glottis	17	6	23	0.45
C321	Supraglottis	14	1	15	0.29
C328	Larynx: Overlapping	3	1	4	0.08
C329	Larynx NOS	1	1	2	0.04
C340	Bronchus: Main	4	4	8	0.16
C341	Lung: Upper Lobe	154	93	247	4.79
C342	Lung: Middle Lobe	9	9	18	0.35
C343	Lung: Lower Lobe	83	72	155	3.00
C348	Lung, Bronchus: Overlap	1	1	2	0.04
C349	Lung NOS	64	44	108	2.09
C379	Thymus	8	9	17	0.33
C381	Mediastinum: Anterior	9	2	11	0.21
C382	Mediastinum: Posterior	1	0	1	0.02
C383	Mediastinum NOS	1	2	3	0.06
C384	Pleura NOS	2	1	3	0.06

TABLE III : PRIMARY SITE (cont.)

CODE	SITE	No. of Cases			%
		MALE	FEMALE	TOTAL	
C40 - C41 BONE AND CARTILAGE		19	11	30	0.58
C400	Bone: Upper Long	2	0	2	0.04
C402	Bone: Lower Long	5	4	9	0.17
C410	Bone: Skull and Face	3	0	3	0.06
C412	Bone: Vertebral Column	6	3	9	0.17
C413	Bone: Rib, Sterum, Clavicle	1	2	3	0.06
C414	Bone: Pelvic, Sacrum, Coccyx	2	2	4	0.08
C42 HEMATOPOIETIC AND RETICULOENDOTHELIAL SYSTEMS		133	119	252	4.88
C421	Bone Marrow	132	117	249	4.83
C422	Spleen	1	2	3	0.06
C44 SKIN		78	111	189	3.66
C440	Skin of lip, NOS	0	4	4	0.08
C441	Eyelid	8	7	15	0.29
C442	External Ear	6	13	19	0.37
C443	Skin: Cheek ChinFaceForehead	21	48	69	1.34
C444	Skin of Scalp and Neck	9	2	11	0.21
C445	Skin of Trunk	8	9	17	0.33
C446	Skin of upper limb & shoulder	6	9	15	0.29
C447	Skin of lower limb and hip	19	16	35	0.68
C449	Skin NOS	1	3	4	0.08
C48 - C49 RETROPERITONEUM AND PERITONEUM		36	43	79	1.53
C480	Retroperitoneum	4	8	12	0.23
C481	Peritoneum: Specified pts	1	1	2	0.04
C482	Peritoneum NOS	1	15	16	0.31
C490	Connective: Head, Face, Neck	1	1	2	0.04
C491	Connective Upperlimb Shoulder	6	5	11	0.21
C492	Connective: Lower limb & hip	13	10	23	0.45
C493	Connective: Thorax	4	0	4	0.08
C494	Connective: Abdomen	1	1	2	0.04
C495	Connective: Pelvis	2	1	3	0.06
C496	Connective: Trunk NOS	3	1	4	0.08
C50 BREAST		2	771	773	14.98
C500	Nipple	0	5	5	0.10
C501	Central portion of breast	0	52	52	1.01
C502	Upper-inner quadrant breast	0	85	85	1.65
C503	Lower-inner quadrant breast	0	46	46	0.89
C504	Upper-outer quadrant breast	1	237	238	4.61

TABLE III : PRIMARY SITE (cont.)

CODE	SITE	No. of Cases			%
		MALE	FEMALE	TOTAL	
C505	Lower-outer quadrant breast	0	53	53	1.03
C506	Axillary tail of breast	0	1	1	0.02
C508	Overlapping lesion of breast	0	156	156	3.02
C509	Breast NOS	1	134	135	2.62
C509 MULTIPLE PRIMARY OF BREAST		0	2	2	0.04
C445	Skin of Trunk	0	1	1	0.02
C773	Lymph Nodes of axilla or arm	0	1	1	0.02
C51 - C58 FEMALE GENITAL ORGANS		0	461	461	8.94
C510	Labium majus	0	1	1	0.02
C519	Vulva NOS	0	9	9	0.17
C529	Vagina NOS	0	13	13	0.25
C539	Cervix uteri	0	171	171	3.31
C541	Endometrium	0	137	137	2.66
C542	Myometrium	0	1	1	0.02
C548	Corpus uteri: Overlap	0	6	6	0.12
C549	Corpus uteri	0	5	5	0.10
C559	Uterus NOS	0	9	9	0.17
C569	Ovary	0	94	94	1.82
C570	Fallopian tube	0	6	6	0.12
C574	Uterine adnexa	0	4	4	0.08
C589	Placenta	0	2	2	0.04
C539 MULTIPLE PRIMARY OF CERVIX UTERI		0	2	2	0.04
C529	Vagina NOS	0	2	2	0.04
C541 MULTIPLE PRIMARY OF ENDOMETRIUM		0	1	1	0.02
C529	Vagina NOS	0	1	1	0.02
C569 MULTIPLE PRIMARY OF OVARY		0	4	4	0.08
C529	Vagina NOS	0	2	2	0.04
C774	Lymph Nodes: Leg	0	1	1	0.02
C775	Pelvic Lymph Nodes	0	1	1	0.02
C60 - C63 MALE GENITAL ORGANS		417	0	417	8.08
C601	Glans penis	1	0	1	0.02
C608	Penis: Overlap	1	0	1	0.02
C609	Penis NOS	3	0	3	0.06
C619	Prostate gland	403	0	403	7.81
C621	Descended testis	1	0	1	0.02
C629	Testis NOS	5	0	5	0.10
C632	Scrotum NOS	3	0	3	0.06

TABLE III : PRIMARY SITE (cont.)

CODE	SITE	No. of Cases			%
		MALE	FEMALE	TOTAL	
C64 - C68 URINARY TRACT		160	65	225	4.36
C649	Kidney NOS	57	28	85	1.65
C659	Renal pelvis	11	6	17	0.33
C669	Ureter	9	3	12	0.23
C670	Trigone of Bladder	0	2	2	0.04
C671	Dome of Bladder	1	0	1	0.02
C672	Lateral wall of Bladder	3	0	3	0.06
C673	Anterior wall of Bladder	1	0	1	0.02
C674	Posterior wall of Bladder	0	1	1	0.02
C675	Bladder Neck	0	1	1	0.02
C678	Bladder: Overlap	5	2	7	0.14
C679	Bladder NOS	69	19	88	1.71
C680	Urethra	4	1	5	0.10
C688	Urinary organs: Overlap	0	2	2	0.04
C69 - C72 EYE, BRAIN AND OTHER PARTS OF CENTRAL NERVOUS SYSTEM		60	45	105	2.04
C690	Conjunctiva	1	1	2	0.04
C692	Retina	6	1	7	0.14
C695	Lacrimal Gland	1	1	2	0.04
C696	Orbit NOS	4	4	8	0.16
C699	Eye NOS	0	1	1	0.02
C710	Cerebrum	4	8	12	0.23
C711	Frontal Lobe	8	10	18	0.35
C712	Temporal Lobe	10	2	12	0.23
C713	Parietal Lobe	4	1	5	0.10
C715	Ventricle NOS	1	0	1	0.02
C716	Cerebellum NOS	3	2	5	0.10
C717	Brain Stem	3	3	6	0.12
C718	Brain: Overlap	4	5	9	0.17
C719	Brain NOS	6	5	11	0.21
C720	Spinal Cord	3	0	3	0.06
C723	Optic Nerve	1	1	2	0.04
C729	Nervous System NOS	1	0	1	0.02
C73 - C75 THYROID AND OTHER ENDOCRINE GLANDS		58	193	251	4.87
C739	Thyroid Gland	53	186	239	4.63
C741	Medulla of Adrenal Gland	0	2	2	0.04
C749	Adrenal Gland NOS	4	3	7	0.14
C750	Parathyroid Gland	0	1	1	0.02
C753	Pineal Gland	1	1	2	0.04

TABLE III : PRIMARY SITE (cont.)

CODE	SITE	No. of Cases			%
		MALE	FEMALE	TOTAL	
C76 OTHER AND ILL-DEFINED SITES		3	3	6	0.12
C762	Abdomen NOS	2	2	4	0.08
C763	Pelvis NOS	1	1	2	0.04
C77 LYMPH NODES		57	47	104	2.02
C770	Lymph Nodes: HeadFaceNeck	34	27	61	1.18
C771	Intrathoracic Lymph Nodes	3	0	3	0.06
C772	Intra-abdominal LymphNodes	4	9	13	0.25
C773	Lymph Nodes of axilla or arm	2	2	4	0.08
C774	Lymph Nodes: Leg	11	7	18	0.35
C775	Pelvic Lymph Nodes	2	0	2	0.04
C779	Lymph Node NOS	1	2	3	0.06
C80 UNKNOW PRIMARY SITE		25	34	59	1.14
C809	Unknown Primary Site	25	34	59	1.14
Z85 PERSONAL HISTORY OF MALIGNANT NEOPLASM		6	7	13	0.25
Z850	Personal history of malignant neoplasm of digestive organs	2	2	4	0.08
Z851	Personal history of malignant neoplasm of trachea, bronchus and lung	1	1	2	0.04
Z853	Personal history of malignant neoplasm of breast	0	4	4	0.08
Z854	Personal history of malignant neoplasm of genital organs	1	0	1	0.02
Z855	Personal history of malignant neoplasm of urinary tract	1	0	1	0.02
Z858	Personal history of malignant neoplasm of other organs and systems	1	0	1	0.02

TABLE IV: INCIDENCE BY AGE GROUP

AGE	MALE		FEMALE		TOTAL	
	n	%	n	%	n	%
ALL AGE GROUP	2,412	100.00	2,747	100.00	5,159	100.00
1+	22	0.91	14	0.51	36	0.70
5+	9	0.37	8	0.29	17	0.33
10+	12	0.50	10	0.36	22	0.43
15+	14	0.58	18	0.66	32	0.62
20+	15	0.62	16	0.58	31	0.60
25+	20	0.83	54	1.97	74	1.43
30+	21	0.87	69	2.51	90	1.74
35+	45	1.87	98	3.57	143	2.77
40+	69	2.86	171	6.22	240	4.65
45+	125	5.18	225	8.19	350	6.78
50+	148	6.14	252	9.17	400	7.75
55+	266	11.03	357	13.00	623	12.08
60+	367	15.22	376	13.69	743	14.40
65+	409	16.96	371	13.51	780	15.12
70+	338	14.01	278	10.12	616	11.94
75+	269	11.15	186	6.77	455	8.82
80+	157	6.51	136	4.95	293	5.68
85+	77	3.19	69	2.51	146	2.83
90+	19	0.79	32	1.16	51	0.99
95+	10	0.41	7	0.25	17	0.33

FIGURE IV.I : INCIDENCE BY AGE GROUP

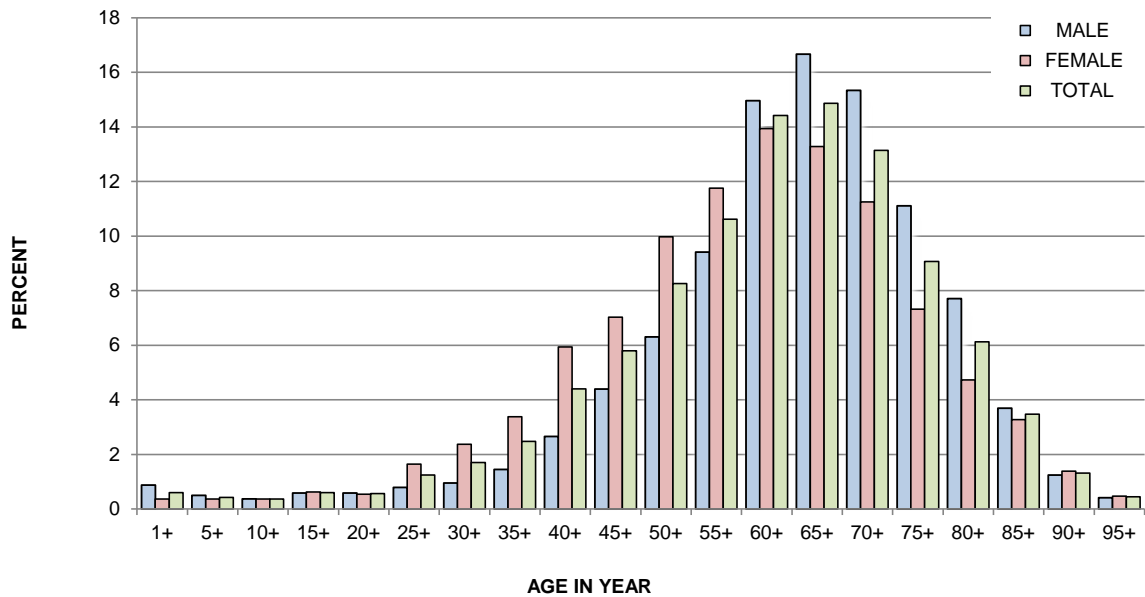


TABLE V : PRIMARY SITE BY AGE GROUP

SITE / AGE - GROUP			1+	5+	10+	15+	20+	25+	30+	35+	40+	45+	50+	55+	60+	65+	70+	75+	80+	85+	90+	95+			
GRAND TOTAL			5,159	38	17	22	32	31	74	90	143	240	350	401	618	743	784	616	455	293	146	51	15		
MALE			2,412	24	9	12	14	15	20	21	45	69	125	148	265	367	410	338	269	157	77	19	8		
FEMALE			2,747	14	8	10	18	16	54	69	98	171	225	253	353	376	374	278	186	136	69	32	7		
C000	External Lip: Upper NOS	T	1	0	0	0	0	0	0	0	0	0	0	0	0	1	0	0	0	0	0	0	0	0	
		M	1	0	0	0	0	0	0	0	0	0	0	0	0	0	1	0	0	0	0	0	0	0	0
		F	0	0	0	0	0	0	0	0	0	0	0	0	0	0	0	0	0	0	0	0	0	0	0
C001	External Lip: Lower NOS	T	4	0	0	0	0	0	0	0	0	0	0	1	1	0	0	1	1	0	0	0	0	0	0
		M	2	0	0	0	0	0	0	0	0	0	0	1	1	0	0	0	0	0	0	0	0	0	0
		F	2	0	0	0	0	0	0	0	0	0	0	0	0	0	0	1	1	0	0	0	0	0	0
C004	Lip: Lower Mucosa	T	2	0	0	0	0	0	0	0	0	0	2	0	0	0	0	0	0	0	0	0	0	0	0
		M	0	0	0	0	0	0	0	0	0	0	0	0	0	0	0	0	0	0	0	0	0	0	0
		F	2	0	0	0	0	0	0	0	0	0	0	2	0	0	0	0	0	0	0	0	0	0	0
C019	Tongue: Base NOS	T	17	0	0	0	0	0	0	0	0	0	2	1	1	5	4	3	1	0	0	0	0	0	0
		M	16	0	0	0	0	0	0	0	0	0	2	1	1	4	4	3	1	0	0	0	0	0	0
		F	1	0	0	0	0	0	0	0	0	0	0	0	0	1	0	0	0	0	0	0	0	0	0
C021	Tongue: Border, Tip	T	1	0	0	0	0	0	0	0	0	0	0	0	0	0	1	0	0	0	0	0	0	0	0
		M	0	0	0	0	0	0	0	0	0	0	0	0	0	0	0	0	0	0	0	0	0	0	0
		F	1	0	0	0	0	0	0	0	0	0	0	0	0	0	1	0	0	0	0	0	0	0	0
C022	Tongue: Ventral NOS	T	1	0	0	0	0	0	0	0	0	0	0	0	1	0	0	0	0	0	0	0	0	0	0
		M	1	0	0	0	0	0	0	0	0	0	0	0	1	0	0	0	0	0	0	0	0	0	0
		F	0	0	0	0	0	0	0	0	0	0	0	0	0	0	0	0	0	0	0	0	0	0	0
C029	Tongue: NOS	T	57	0	0	0	0	0	1	0	3	4	4	6	9	8	9	8	3	2	0	0	0	0	0
		M	36	0	0	0	0	0	0	0	2	2	3	3	7	4	7	3	3	2	0	0	0	0	0
		F	21	0	0	0	0	0	1	0	1	2	1	3	2	4	2	5	0	0	0	0	0	0	0
C030	Gum: Upper	T	7	0	0	0	0	0	0	0	0	0	0	0	1	1	2	1	0	1	1	0	0	0	0
		M	1	0	0	0	0	0	0	0	0	0	0	0	0	0	0	0	0	1	0	0	0	0	0
		F	6	0	0	0	0	0	0	0	0	0	0	0	1	1	2	1	0	0	1	0	0	0	0
C031	Gum: Lower	T	9	0	0	0	0	0	0	0	0	0	0	1	1	2	2	1	0	1	0	1	0	1	0
		M	5	0	0	0	0	0	0	0	0	0	0	0	1	2	1	1	0	0	0	0	0	0	0
		F	4	0	0	0	0	0	0	0	0	0	0	1	0	0	1	0	0	1	0	1	0	1	0
C041	Mouth: Lateral Floor	T	1	0	0	0	0	0	0	0	0	1	0	0	0	0	0	0	0	0	0	0	0	0	0
		M	1	0	0	0	0	0	0	0	0	1	0	0	0	0	0	0	0	0	0	0	0	0	0
		F	0	0	0	0	0	0	0	0	0	0	0	0	0	0	0	0	0	0	0	0	0	0	0

TABLE V : PRIMARY SITE BY AGE GROUP (cont.)

SITE / AGE - GROUP		1+	5+	10+	15+	20+	25+	30+	35+	40+	45+	50+	55+	60+	65+	70+	75+	80+	85+	90+	95+		
C049	Floor of Mouth NOS	T	8	0	0	0	0	0	0	0	2	0	0	1	2	1	1	1	0	0	0	0	
		M	8	0	0	0	0	0	0	0	0	2	0	0	1	2	1	1	1	0	0	0	0
		F	0	0	0	0	0	0	0	0	0	0	0	0	0	0	0	0	0	0	0	0	0
C050	Hard Palate	T	3	0	0	0	0	0	0	0	0	0	0	1	1	0	0	1	0	0	0	0	
		M	2	0	0	0	0	0	0	0	0	0	0	1	0	0	0	1	0	0	0	0	
		F	1	0	0	0	0	0	0	0	0	0	0	0	1	0	0	0	0	0	0	0	
C051	Soft Palate NOS	T	4	0	0	0	0	0	0	0	0	0	0	1	1	0	0	1	1	0	0	0	
		M	3	0	0	0	0	0	0	0	0	0	0	1	1	0	0	1	0	0	0	0	
		F	1	0	0	0	0	0	0	0	0	0	0	0	0	0	0	0	1	0	0	0	
C052	Uvula	T	1	0	0	0	0	0	0	0	0	0	0	0	1	0	0	0	0	0	0	0	
		M	1	0	0	0	0	0	0	0	0	0	0	0	1	0	0	0	0	0	0	0	
		F	0	0	0	0	0	0	0	0	0	0	0	0	0	0	0	0	0	0	0	0	
C060	Cheek Mucosa	T	4	0	0	0	0	0	0	0	0	0	0	0	1	0	1	1	0	1	0	0	
		M	1	0	0	0	0	0	0	0	0	0	0	0	1	0	0	0	0	0	0	0	
		F	3	0	0	0	0	0	0	0	0	0	0	0	0	0	1	1	0	1	0	0	
C062	Retromolar Area	T	4	0	0	0	0	0	0	0	0	0	0	0	1	2	1	0	0	0	0	0	
		M	4	0	0	0	0	0	0	0	0	0	0	0	1	2	1	0	0	0	0	0	
		F	0	0	0	0	0	0	0	0	0	0	0	0	0	0	0	0	0	0	0	0	
C079	Parotid Gland	T	12	0	0	1	1	1	0	0	1	0	1	1	1	0	0	1	1	1	2	0	
		M	4	0	0	0	0	0	0	0	0	0	0	0	0	0	0	0	1	1	2	0	
		F	8	0	0	1	1	1	0	0	1	0	1	1	1	0	0	1	0	0	0	0	
C080	Submandibular Gland	T	4	0	0	0	0	0	0	0	0	1	0	1	0	1	0	1	0	0	0	0	
		M	3	0	0	0	0	0	0	0	0	1	0	1	0	1	0	0	0	0	0	0	
		F	1	0	0	0	0	0	0	0	0	0	0	0	0	0	0	1	0	0	0	0	
C081	Sublingual Gland	T	2	0	0	0	0	0	0	0	0	1	0	0	1	0	0	0	0	0	0	0	
		M	1	0	0	0	0	0	0	0	0	1	0	0	0	0	0	0	0	0	0	0	
		F	1	0	0	0	0	0	0	0	0	0	0	0	1	0	0	0	0	0	0	0	
C099	Tonsil NOS	T	22	0	0	0	0	0	0	0	2	3	4	2	2	6	1	1	1	0	0	0	
		M	18	0	0	0	0	0	0	0	0	3	4	2	1	6	1	1	0	0	0	0	
		F	4	0	0	0	0	0	0	0	2	0	0	0	1	0	0	0	1	0	0	0	
C102	Oropharynx: Lateral Wall	T	1	0	0	0	0	0	0	0	0	0	0	1	0	0	0	0	0	0	0	0	
		M	1	0	0	0	0	0	0	0	0	0	0	1	0	0	0	0	0	0	0	0	
		F	0	0	0	0	0	0	0	0	0	0	0	0	0	0	0	0	0	0	0	0	

10

TABLE V : PRIMARY SITE BY AGE GROUP (cont.)

SITE / AGE - GROUP		1+	5+	10+	15+	20+	25+	30+	35+	40+	45+	50+	55+	60+	65+	70+	75+	80+	85+	90+	95+	
C109	Oropharynx NOS	T	12	0	0	0	0	0	0	0	3	2	2	3	1	0	0	0	1	0	0	
		M	10	0	0	0	0	0	0	0	0	3	1	2	2	1	0	0	0	1	0	0
		F	2	0	0	0	0	0	0	0	0	0	1	0	1	0	0	0	0	0	0	0
C113	Nasopharynx: Anterior Wall	T	1	0	0	0	0	0	0	0	0	0	0	0	1	0	0	0	0	0	0	
		M	0	0	0	0	0	0	0	0	0	0	0	0	0	0	0	0	0	0	0	0
		F	1	0	0	0	0	0	0	0	0	0	0	0	1	0	0	0	0	0	0	0
C119	Nasopharynx NOS	T	74	0	0	0	0	1	3	4	8	8	12	13	10	5	6	4	0	0	0	
		M	47	0	0	0	0	0	2	4	6	4	8	10	6	4	2	1	0	0	0	0
		F	27	0	0	0	0	1	1	0	2	4	4	3	4	1	4	3	0	0	0	0
C129	Pyriform Sinus	T	28	0	0	0	0	0	0	0	3	3	2	7	5	5	1	1	1	1	0	
		M	26	0	0	0	0	0	0	0	2	3	1	7	5	5	1	1	1	1	0	0
		F	2	0	0	0	0	0	0	0	0	1	0	1	0	0	0	0	0	0	0	0
C138	Hypopharynx: Overlapping	T	1	0	0	0	0	0	0	0	0	0	0	0	0	0	0	0	1	0	0	
		M	1	0	0	0	0	0	0	0	0	0	0	0	0	0	0	0	1	0	0	0
		F	0	0	0	0	0	0	0	0	0	0	0	0	0	0	0	0	0	0	0	0
C139	Hypopharynx NOS	T	13	0	0	0	0	0	0	0	1	2	2	3	3	1	1	0	0	0	0	
		M	11	0	0	0	0	0	0	0	0	1	1	2	2	3	1	1	0	0	0	0
		F	2	0	0	0	0	0	0	0	0	0	1	0	1	0	0	0	0	0	0	0
C150	Esophagus: Cervical	T	7	0	0	0	0	0	0	1	0	0	1	2	1	2	0	0	0	0	0	
		M	6	0	0	0	0	0	0	0	0	0	1	2	1	2	0	0	0	0	0	0
		F	1	0	0	0	0	0	0	0	1	0	0	0	0	0	0	0	0	0	0	0
C151	Esophagus: Thoracic	T	21	0	0	0	0	0	0	0	3	1	0	5	9	2	1	0	0	0	0	
		M	20	0	0	0	0	0	0	0	3	1	0	5	9	1	1	0	0	0	0	0
		F	1	0	0	0	0	0	0	0	0	0	0	0	0	0	1	0	0	0	0	0
C153	Esophagus: Upper Third	T	4	0	0	0	0	0	0	0	0	0	1	1	1	0	1	0	0	0	0	
		M	3	0	0	0	0	0	0	0	0	0	0	1	0	1	0	1	0	0	0	0
		F	1	0	0	0	0	0	0	0	0	0	0	0	1	0	0	0	0	0	0	0
C154	Esophagus: Middle Third	T	4	0	0	0	0	0	0	0	0	1	0	1	1	1	0	0	0	0	0	
		M	3	0	0	0	0	0	0	0	0	1	0	1	1	0	0	0	0	0	0	0
		F	1	0	0	0	0	0	0	0	0	0	0	0	0	1	0	0	0	0	0	0
C155	Esophagus: Lower Third	T	4	0	0	0	0	0	0	0	0	1	0	2	0	0	0	0	0	1	0	
		M	2	0	0	0	0	0	0	0	0	1	0	1	0	0	0	0	0	0	0	0
		F	2	0	0	0	0	0	0	0	0	0	0	0	1	0	0	0	0	0	1	0

11

TABLE V : PRIMARY SITE BY AGE GROUP (cont.)

SITE / AGE - GROUP			1+	5+	10+	15+	20+	25+	30+	35+	40+	45+	50+	55+	60+	65+	70+	75+	80+	85+	90+	95+			
C158	Esophagus: Overlapping	T	9	0	0	0	0	0	0	0	0	2	1	2	2	1	1	0	0	0	0	0	0		
		M	9	0	0	0	0	0	0	0	0	0	2	1	2	2	1	1	0	0	0	0	0	0	
		F	0	0	0	0	0	0	0	0	0	0	0	0	0	0	0	0	0	0	0	0	0	0	0
C159	Esophagus NOS	T	23	0	0	0	0	0	0	0	0	1	4	4	4	3	4	2	0	1	0	0	0	0	
		M	22	0	0	0	0	0	0	0	0	0	1	4	4	3	3	4	2	0	1	0	0	0	0
		F	1	0	0	0	0	0	0	0	0	0	0	0	0	1	0	0	0	0	0	0	0	0	0
C160	Stomach: Cardia NOS	T	17	0	0	0	0	0	0	0	0	2	0	1	1	5	1	2	2	2	0	1	0	1	
		M	13	0	0	0	0	0	0	0	0	2	0	1	1	5	1	1	1	1	0	0	0	1	
		F	4	0	0	0	0	0	0	0	0	0	0	0	0	0	0	0	1	1	2	0	0	0	0
C161	Stomach: Fundus	T	1	0	0	0	0	0	0	0	0	0	0	0	0	0	0	1	0	0	0	0	0	0	0
		M	1	0	0	0	0	0	0	0	0	0	0	0	0	0	0	1	0	0	0	0	0	0	0
		F	0	0	0	0	0	0	0	0	0	0	0	0	0	0	0	0	0	0	0	0	0	0	0
C162	Stomach: Body	T	15	0	0	0	0	0	0	0	1	3	1	2	5	1	1	1	0	0	0	0	0	0	0
		M	4	0	0	0	0	0	0	0	0	0	0	0	1	1	1	1	0	0	0	0	0	0	0
		F	11	0	0	0	0	0	0	0	0	1	3	1	2	4	0	0	0	0	0	0	0	0	0
C163	Stomach: Pyl Antrum	T	15	0	0	0	0	0	0	0	1	0	1	1	2	1	5	2	1	1	1	0	0	0	0
		M	5	0	0	0	0	0	0	0	1	0	0	0	1	1	1	1	0	0	0	0	0	0	0
		F	10	0	0	0	0	0	0	0	0	0	0	1	1	1	0	4	1	1	1	1	0	0	0
C164	Stomach: Pylorus	T	1	0	0	0	0	0	0	0	0	0	0	0	0	0	0	0	0	1	0	0	0	0	0
		M	1	0	0	0	0	0	0	0	0	0	0	0	0	0	0	0	0	1	0	0	0	0	0
		F	0	0	0	0	0	0	0	0	0	0	0	0	0	0	0	0	0	0	0	0	0	0	0
C165	Stomach: Less Curv	T	1	0	0	0	0	0	0	0	0	0	0	1	0	0	0	0	0	0	0	0	0	0	0
		M	1	0	0	0	0	0	0	0	0	0	0	1	0	0	0	0	0	0	0	0	0	0	0
		F	0	0	0	0	0	0	0	0	0	0	0	0	0	0	0	0	0	0	0	0	0	0	0
C168	Stomach: Overlapping	T	3	0	0	0	0	0	0	1	0	1	0	0	0	1	0	0	0	0	0	0	0	0	0
		M	1	0	0	0	0	0	0	1	0	0	0	0	0	0	0	0	0	0	0	0	0	0	0
		F	2	0	0	0	0	0	0	0	0	1	0	0	0	1	0	0	0	0	0	0	0	0	0
C169	Stomach, NOS	T	51	0	0	0	0	1	2	2	2	3	3	2	6	13	4	2	6	3	1	1	0	0	0
		M	20	0	0	0	0	0	0	1	1	1	2	1	1	7	2	0	2	1	0	1	0	0	0
		F	31	0	0	0	0	1	2	1	1	2	1	1	5	6	2	2	4	2	1	0	0	0	0
C170	Duodenum	T	10	0	0	0	0	0	0	0	0	0	2	2	2	0	1	3	0	0	0	0	0	0	0
		M	5	0	0	0	0	0	0	0	0	0	1	2	1	0	0	1	0	0	0	0	0	0	0
		F	5	0	0	0	0	0	0	0	0	0	0	1	0	1	0	1	2	0	0	0	0	0	0

12

SIRIRAJ CANCER REGISTRY 2021

TABLE V : PRIMARY SITE BY AGE GROUP (cont.)

SITE / AGE - GROUP			1+	5+	10+	15+	20+	25+	30+	35+	40+	45+	50+	55+	60+	65+	70+	75+	80+	85+	90+	95+	
C171	Jejunum	T	7	0	0	0	0	0	0	1	0	2	0	1	0	2	0	1	0	0	0	0	
		M	5	0	0	0	0	0	0	0	1	0	1	0	1	0	1	0	1	0	0	0	0
		F	2	0	0	0	0	0	0	0	0	0	1	0	0	0	1	0	0	0	0	0	0
C172	Ileum	T	1	0	0	0	0	0	0	0	0	0	0	0	0	0	0	1	0	0	0	0	
		M	0	0	0	0	0	0	0	0	0	0	0	0	0	0	0	0	0	0	0	0	0
		F	1	0	0	0	0	0	0	0	0	0	0	0	0	0	0	0	1	0	0	0	0
C179	Small Intestine, NOS	T	1	0	0	0	0	0	0	0	0	0	0	0	0	1	0	0	0	0	0	0	
		M	1	0	0	0	0	0	0	0	0	0	0	0	0	1	0	0	0	0	0	0	0
		F	0	0	0	0	0	0	0	0	0	0	0	0	0	0	0	0	0	0	0	0	0
C180	Colon: Caecum	T	20	0	0	1	0	0	0	0	0	0	2	2	0	4	1	3	3	4	0	0	
		M	8	0	0	1	0	0	0	0	0	0	0	1	0	1	1	1	2	1	0	0	
		F	12	0	0	0	0	0	0	0	0	0	0	2	1	0	3	0	2	1	3	0	0
C181	Colon: Appendix	T	8	0	0	1	0	1	0	0	0	1	2	0	2	0	0	1	0	0	0	0	
		M	3	0	0	1	0	1	0	0	0	0	1	0	0	0	0	0	0	0	0	0	0
		F	5	0	0	0	0	0	0	0	0	0	1	1	0	2	0	0	1	0	0	0	0
C182	Colon: Ascending	T	32	0	0	0	0	0	0	0	1	1	1	4	5	5	4	1	6	4	0	0	
		M	13	0	0	0	0	0	0	0	0	0	0	1	3	4	1	1	1	2	0	0	
		F	19	0	0	0	0	0	0	0	0	1	1	1	3	2	1	3	0	5	2	0	0
C183	Colon: Hepatic Flexure	T	20	0	0	0	0	0	0	1	0	1	1	3	1	6	2	0	4	1	0	0	
		M	16	0	0	0	0	0	0	1	0	1	1	2	0	6	1	0	4	0	0	0	
		F	4	0	0	0	0	0	0	0	0	0	0	1	1	0	1	0	0	1	0	0	
C184	Colon: Transverse	T	10	0	0	0	0	0	0	0	0	1	2	1	1	1	0	1	2	1	0	0	
		M	5	0	0	0	0	0	0	0	0	0	1	1	1	0	1	0	1	0	0	0	0
		F	5	0	0	0	0	0	0	0	0	0	0	1	0	1	0	0	0	2	1	0	0
C185	Colon: Splenic Flexure	T	9	0	0	0	0	0	0	0	0	0	0	1	2	1	2	2	1	0	0	0	
		M	6	0	0	0	0	0	0	0	0	0	0	1	1	0	2	2	0	0	0	0	
		F	3	0	0	0	0	0	0	0	0	0	0	0	1	1	0	0	1	0	0	0	
C186	Colon: Descending	T	18	0	0	0	0	2	0	0	2	1	1	1	3	2	3	2	1	0	0	0	
		M	8	0	0	0	0	2	0	0	0	0	1	0	1	1	2	1	0	0	0	0	
		F	10	0	0	0	0	0	0	0	2	1	0	1	2	1	1	1	1	1	0	0	0
C187	Colon: Sigmoid	T	105	0	0	0	0	1	0	1	4	5	6	16	15	17	12	10	11	4	2	1	
		M	59	0	0	0	0	1	0	1	1	1	3	8	12	11	7	6	4	1	2	1	
		F	46	0	0	0	0	0	0	0	3	4	3	8	3	6	5	4	7	3	0	0	

13

SIRIRAJ CANCER REGISTRY 2021

TABLE V : PRIMARY SITE BY AGE GROUP (cont.)

SITE / AGE - GROUP			1+	5+	10+	15+	20+	25+	30+	35+	40+	45+	50+	55+	60+	65+	70+	75+	80+	85+	90+	95+	
C188	Colon: Overlapping	T	4	0	0	0	0	0	0	0	0	0	0	0	0	2	1	0	0	1	0	0	
		M	3	0	0	0	0	0	0	0	0	0	0	0	0	0	1	1	0	0	1	0	0
		F	1	0	0	0	0	0	0	0	0	0	0	0	0	0	1	0	0	0	0	0	0
C189	Colon NOS	T	6	0	0	0	0	0	1	0	0	0	0	0	1	2	1	0	1	0	0	0	
		M	3	0	0	0	0	0	1	0	0	0	0	0	0	1	1	0	0	0	0	0	
		F	3	0	0	0	0	0	0	0	0	0	0	0	1	1	0	0	1	0	0	0	
C199	Rectosigmoid Junction	T	35	0	0	0	0	0	0	0	1	0	2	7	8	2	6	6	0	3	0	0	
		M	26	0	0	0	0	0	0	0	1	0	2	6	6	1	5	3	0	2	0	0	
		F	9	0	0	0	0	0	0	0	0	0	0	1	2	1	1	3	0	1	0	0	
C209	Rectum NOS	T	171	0	0	0	0	1	2	3	9	8	14	21	28	33	14	17	13	6	2	0	
		M	97	0	0	0	0	1	1	2	4	5	10	10	17	24	8	10	3	2	0	0	
		F	74	0	0	0	0	0	1	1	5	3	4	11	11	9	6	7	10	4	2	0	
C211	Anal Canal	T	10	0	0	0	0	0	0	0	0	2	0	3	2	1	1	0	1	0	0	0	
		M	4	0	0	0	0	0	0	0	0	0	0	2	0	1	1	0	0	0	0	0	
		F	6	0	0	0	0	0	0	0	0	2	0	1	2	0	0	0	1	0	0	0	
C218	Rectum: Overlapping	T	1	0	0	0	0	0	0	0	0	0	0	0	1	0	0	0	0	0	0	0	
		M	1	0	0	0	0	0	0	0	0	0	0	0	1	0	0	0	0	0	0	0	
		F	0	0	0	0	0	0	0	0	0	0	0	0	0	0	0	0	0	0	0	0	
C220	Liver	T	379	2	1	1	0	1	0	1	6	18	25	34	48	69	56	52	27	26	9	2	1
		M	280	1	0	0	0	1	0	0	4	11	22	29	36	56	39	39	18	16	6	1	1
		F	99	1	1	1	0	0	0	1	2	7	3	5	12	13	17	13	9	10	3	1	0
C221	Intrahepatic Bile Duct	T	63	0	0	0	0	0	0	0	2	4	3	8	9	16	12	7	2	0	0	0	
		M	38	0	0	0	0	0	0	0	2	2	2	6	3	10	8	4	1	0	0	0	
		F	25	0	0	0	0	0	0	0	0	2	1	2	6	6	4	3	1	0	0	0	
C239	Gallbladder	T	17	0	0	0	0	0	0	0	2	0	2	4	2	3	1	2	1	0	0	0	
		M	5	0	0	0	0	0	0	0	1	0	1	1	0	1	0	1	0	0	0	0	
		F	12	0	0	0	0	0	0	0	1	0	1	3	2	2	1	1	1	0	0	0	
C240	Extrahepatic Bile Duct	T	23	0	0	0	0	0	0	0	2	0	0	4	10	1	3	1	2	0	0	0	
		M	11	0	0	0	0	0	0	0	2	0	0	2	5	1	0	1	0	0	0	0	
		F	12	0	0	0	0	0	0	0	0	0	0	2	5	0	3	0	2	0	0	0	
C241	Ampulla of Vater	T	10	0	0	0	0	0	0	0	0	0	1	1	2	4	0	0	1	1	0	0	
		M	8	0	0	0	0	0	0	0	0	0	1	1	2	2	0	0	1	1	0	0	
		F	2	0	0	0	0	0	0	0	0	0	0	0	0	2	0	0	0	0	0	0	

14

SIRIRAJ CANCER REGISTRY 2021

TABLE V : PRIMARY SITE BY AGE GROUP (cont.)

SITE / AGE - GROUP			1+	5+	10+	15+	20+	25+	30+	35+	40+	45+	50+	55+	60+	65+	70+	75+	80+	85+	90+	95+
C250	Pancreas: Head	T	60	0	0	0	0	0	0	1	0	2	3	7	9	14	8	10	3	2	1	0
		M	27	0	0	0	0	0	0	0	0	2	2	3	3	8	2	5	1	1	0	0
		F	33	0	0	0	0	0	0	0	1	0	0	1	4	6	6	6	5	2	1	1
C251	Pancreas: Body	T	14	0	0	0	0	0	0	0	0	1	0	2	2	3	2	2	0	1	1	0
		M	3	0	0	0	0	0	0	0	0	0	0	0	0	1	0	1	1	0	0	0
		F	11	0	0	0	0	0	0	0	0	0	1	0	2	1	3	1	1	0	1	1
C252	Pancreas: Tail	T	5	0	0	0	0	0	0	1	1	0	0	0	0	1	0	2	0	0	0	0
		M	3	0	0	0	0	0	0	1	1	0	0	0	0	0	0	1	0	0	0	0
		F	2	0	0	0	0	0	0	0	0	0	0	0	0	0	1	0	1	0	0	0
C253	Pancreatic Duct	T	2	0	0	0	0	0	0	0	0	0	0	1	0	0	1	0	0	0	0	0
		M	0	0	0	0	0	0	0	0	0	0	0	0	0	0	0	0	0	0	0	0
		F	2	0	0	0	0	0	0	0	0	0	0	0	1	0	0	1	0	0	0	0
C257	Pancreas Other	T	2	0	0	0	0	0	0	0	0	0	0	0	0	1	0	0	0	1	0	0
		M	2	0	0	0	0	0	0	0	0	0	0	0	0	0	1	0	0	0	1	0
		F	0	0	0	0	0	0	0	0	0	0	0	0	0	0	0	0	0	0	0	0
C258	Pancreas: Overlapping	T	4	0	0	0	0	0	0	0	0	0	0	1	0	0	0	2	0	1	0	0
		M	1	0	0	0	0	0	0	0	0	0	0	0	0	0	0	1	0	0	0	0
		F	3	0	0	0	0	0	0	0	0	0	0	0	1	0	0	0	1	0	1	0
C259	Pancreas NOS	T	28	0	0	0	0	0	0	1	0	2	3	2	5	3	4	6	1	1	0	0
		M	12	0	0	0	0	0	0	1	0	1	2	1	2	1	2	2	0	0	0	0
		F	16	0	0	0	0	0	0	0	0	1	1	1	3	2	2	4	1	1	0	0
C300	Nasal Cavity	T	18	0	0	0	0	0	0	1	1	3	2	3	0	5	1	1	1	0	0	0
		M	12	0	0	0	0	0	0	0	1	2	2	2	0	3	0	1	1	0	0	0
		F	6	0	0	0	0	0	0	1	0	1	0	1	0	2	1	0	0	0	0	0
C310	Maxillary Sinus	T	8	0	0	0	0	0	0	0	0	2	1	0	0	0	1	2	0	2	0	0
		M	6	0	0	0	0	0	0	0	0	2	1	0	0	0	0	1	1	0	1	0
		F	2	0	0	0	0	0	0	0	0	0	0	0	0	0	0	0	1	0	1	0
C311	Ethmoid Sinus	T	2	0	0	0	0	0	0	1	0	0	0	0	0	0	1	0	0	0	0	0
		M	1	0	0	0	0	0	0	0	0	0	0	0	0	0	0	1	0	0	0	0
		F	1	0	0	0	0	0	0	1	0	0	0	0	0	0	0	0	0	0	0	0
C313	Sphenoid Sinus	T	1	0	0	0	0	0	0	0	0	1	0	0	0	0	0	0	0	0	0	0
		M	1	0	0	0	0	0	0	0	0	1	0	0	0	0	0	0	0	0	0	0
		F	0	0	0	0	0	0	0	0	0	0	0	0	0	0	0	0	0	0	0	0

15

SIRIRAJ CANCER REGISTRY 2021

TABLE V : PRIMARY SITE BY AGE GROUP (cont.)

SITE / AGE - GROUP			1+	5+	10+	15+	20+	25+	30+	35+	40+	45+	50+	55+	60+	65+	70+	75+	80+	85+	90+	95+	
C320	Glottis	T	23	0	0	0	0	0	0	0	0	2	1	2	6	1	7	1	3	0	0	0	
		M	17	0	0	0	0	0	0	0	0	0	1	1	2	4	1	6	1	1	0	0	0
		F	6	0	0	0	0	0	0	0	0	0	1	0	0	2	0	1	0	2	0	0	0
C321	Supraglottis	T	15	0	0	0	0	0	0	0	1	1	1	2	1	5	1	1	1	1	0	0	0
		M	14	0	0	0	0	0	0	0	1	1	0	2	1	5	1	1	1	1	0	0	0
		F	1	0	0	0	0	0	0	0	0	0	1	0	0	0	0	0	0	0	0	0	0
C328	Larynx: Overlapping	T	4	0	0	0	0	0	0	0	0	0	0	1	0	1	1	0	0	1	0	0	0
		M	3	0	0	0	0	0	0	0	0	0	0	1	0	1	1	0	0	0	0	0	0
		F	1	0	0	0	0	0	0	0	0	0	0	0	0	0	0	0	0	1	0	0	0
C329	Larynx NOS	T	2	0	0	0	0	0	0	0	0	0	0	0	0	1	0	0	1	0	0	0	0
		M	1	0	0	0	0	0	0	0	0	0	0	0	0	1	0	0	0	0	0	0	0
		F	1	0	0	0	0	0	0	0	0	0	0	0	0	0	0	0	1	0	0	0	0
C340	Bronchus: Main	T	8	0	0	0	0	0	0	0	0	0	0	1	2	2	1	1	1	0	0	0	0
		M	4	0	0	0	0	0	0	0	0	0	0	0	1	1	1	0	1	0	0	0	0
		F	4	0	0	0	0	0	0	0	0	0	0	0	0	1	1	1	0	1	0	0	0
C341	Lung: Upper Lobe	T	247	0	0	0	0	0	0	2	2	11	16	27	46	44	39	29	19	10	1	1	
		M	154	0	0	0	0	0	0	1	0	8	5	14	30	21	25	24	16	8	1	1	
		F	93	0	0	0	0	0	0	1	2	3	11	13	16	23	14	5	3	2	0	0	
C342	Lung: Middle Lobe	T	18	0	0	0	0	0	0	0	1	0	0	5	3	4	4	0	1	0	0	0	0
		M	9	0	0	0	0	0	0	0	0	0	0	2	3	3	1	0	0	0	0	0	0
		F	9	0	0	0	0	0	0	0	1	0	0	3	0	1	3	0	1	0	0	0	0
C343	Lung: Lower Lobe	T	155	0	0	0	0	0	1	2	2	6	13	15	18	38	25	18	9	6	2	0	
		M	83	0	0	0	0	0	1	1	1	2	5	7	9	21	17	11	4	3	1	0	
		F	72	0	0	0	0	0	0	1	1	4	8	8	9	17	8	7	5	3	1	0	
C348	Lung, Bronchus: Overlap	T	2	0	0	0	0	0	0	0	0	0	0	0	1	0	1	0	0	0	0	0	0
		M	1	0	0	0	0	0	0	0	0	0	0	0	1	0	0	0	0	0	0	0	0
		F	1	0	0	0	0	0	0	0	0	0	0	0	0	0	1	0	0	0	0	0	0
C349	Lung NOS	T	108	0	0	0	0	1	2	1	1	6	4	14	23	25	10	14	7	0	0	0	0
		M	64	0	0	0	0	0	1	1	0	5	1	10	14	14	4	7	7	0	0	0	0
		F	44	0	0	0	0	1	1	0	1	1	3	4	9	11	6	7	0	0	0	0	0
C379	Thymus	T	17	0	0	0	0	0	0	1	1	1	1	5	1	2	4	1	0	0	0	0	0
		M	8	0	0	0	0	0	0	0	0	0	1	1	3	1	1	1	0	0	0	0	0
		F	9	0	0	0	0	0	0	0	1	1	0	0	2	0	1	3	1	0	0	0	0

16

SIRIRAJ CANCER REGISTRY 2021

TABLE V : PRIMARY SITE BY AGE GROUP (cont.)

SITE / AGE - GROUP			1+	5+	10+	15+	20+	25+	30+	35+	40+	45+	50+	55+	60+	65+	70+	75+	80+	85+	90+	95+	
C381	Mediastinum: Anterior	T	11	0	0	0	2	4	1	1	2	1	0	0	0	0	0	0	0	0	0	0	0
		M	9	0	0	0	1	4	1	1	1	1	0	0	0	0	0	0	0	0	0	0	0
		F	2	0	0	0	1	0	0	0	1	0	0	0	0	0	0	0	0	0	0	0	0
C382	Mediastinum: Posterior	T	1	0	1	0	0	0	0	0	0	0	0	0	0	0	0	0	0	0	0	0	0
		M	1	0	1	0	0	0	0	0	0	0	0	0	0	0	0	0	0	0	0	0	0
		F	0	0	0	0	0	0	0	0	0	0	0	0	0	0	0	0	0	0	0	0	0
C383	Mediastinum NOS	T	3	0	0	0	0	0	0	2	1	0	0	0	0	0	0	0	0	0	0	0	0
		M	1	0	0	0	0	0	0	1	0	0	0	0	0	0	0	0	0	0	0	0	0
		F	2	0	0	0	0	0	0	1	1	0	0	0	0	0	0	0	0	0	0	0	0
C384	Pleura NOS	T	3	0	0	0	0	0	0	0	0	0	0	1	0	0	1	0	0	0	0	1	0
		M	2	0	0	0	0	0	0	0	0	0	0	1	0	0	0	0	0	0	0	1	0
		F	1	0	0	0	0	0	0	0	0	0	0	0	0	0	1	0	0	0	0	0	0
C400	Bone: Upper Long	T	2	0	0	0	1	0	0	0	0	0	0	0	0	0	0	1	0	0	0	0	0
		M	2	0	0	0	1	0	0	0	0	0	0	0	0	0	0	1	0	0	0	0	0
		F	0	0	0	0	0	0	0	0	0	0	0	0	0	0	0	0	0	0	0	0	0
C402	Bone: Lower Long	T	9	0	0	4	1	2	1	0	0	0	0	0	0	0	0	1	0	0	0	0	0
		M	5	0	0	2	0	1	1	0	0	0	0	0	0	0	0	1	0	0	0	0	0
		F	4	0	0	2	1	1	0	0	0	0	0	0	0	0	0	0	0	0	0	0	0
C410	Bone: Skull and Face	T	3	0	0	0	1	0	0	0	0	0	1	0	0	0	1	0	0	0	0	0	0
		M	3	0	0	0	1	0	0	0	0	0	1	0	0	0	1	0	0	0	0	0	0
		F	0	0	0	0	0	0	0	0	0	0	0	0	0	0	0	0	0	0	0	0	0
C412	Bone: Vertebral Column	T	9	1	0	0	0	0	0	0	1	1	2	0	0	2	0	0	2	0	0	0	0
		M	6	1	0	0	0	0	0	0	0	0	1	2	0	0	1	0	0	1	0	0	0
		F	3	0	0	0	0	0	0	0	0	1	0	0	0	0	1	0	0	1	0	0	0
C413	Bone: Rib, Sterum, Clavicle	T	3	0	0	0	0	0	0	0	0	0	0	1	0	0	1	0	1	0	0	0	0
		M	1	0	0	0	0	0	0	0	0	0	0	0	0	0	0	1	0	0	0	0	0
		F	2	0	0	0	0	0	0	0	0	0	0	0	1	0	0	0	0	1	0	0	0
C414	Bone: Pelvic, Sacrum, Coccyx	T	4	0	0	0	0	0	1	0	0	0	1	0	0	1	0	1	0	0	0	0	0
		M	2	0	0	0	0	0	1	0	0	0	1	0	0	0	0	0	0	0	0	0	0
		F	2	0	0	0	0	0	0	0	0	0	0	0	0	1	0	1	0	0	0	0	0
C421	Bone Marrow	T	249	13	6	2	5	7	10	5	8	12	10	15	29	40	25	21	19	9	10	1	2
		M	132	6	4	1	4	5	3	2	4	6	5	8	19	17	13	11	12	6	5	0	1
		F	117	7	2	1	1	2	7	3	4	6	5	7	10	23	12	10	7	3	5	1	1

17

SIRIRAJ CANCER REGISTRY 2021

TABLE V : PRIMARY SITE BY AGE GROUP (cont.)

SITE / AGE - GROUP			1+	5+	10+	15+	20+	25+	30+	35+	40+	45+	50+	55+	60+	65+	70+	75+	80+	85+	90+	95+	
C422	Spleen	T	3	0	0	0	0	0	0	0	0	0	0	1	1	0	0	0	1	0	0	0	
		M	1	0	0	0	0	0	0	0	0	0	0	0	1	0	0	0	0	0	0	0	0
		F	2	0	0	0	0	0	0	0	0	0	0	0	0	1	0	0	0	1	0	0	0
C440	Skin of lip, NOS	T	4	0	0	0	0	0	0	0	0	1	0	0	1	0	2	0	0	0	0	0	0
		M	0	0	0	0	0	0	0	0	0	0	0	0	0	0	0	0	0	0	0	0	0
		F	4	0	0	0	0	0	0	0	0	1	0	0	1	0	2	0	0	0	0	0	0
C441	Eyelid	T	15	0	0	0	0	0	0	0	1	0	0	0	1	1	3	3	3	1	1	1	1
		M	8	0	0	0	0	0	0	0	0	0	0	0	1	1	3	1	1	0	0	1	1
		F	7	0	0	0	0	0	0	0	1	0	0	0	0	0	0	2	2	1	1	0	0
C442	External Ear	T	19	0	0	0	0	0	1	0	1	1	3	3	0	2	2	3	3	0	0	0	0
		M	6	0	0	0	0	0	0	0	0	1	1	1	0	0	1	0	2	0	0	0	0
		F	13	0	0	0	0	0	1	0	1	0	2	2	0	2	1	3	1	0	0	0	0
C443	Skin: Cheek ChinFaceForehead	T	69	0	0	1	0	0	1	0	3	0	0	6	6	10	6	13	11	5	5	2	2
		M	21	0	0	0	0	0	1	0	2	0	0	3	3	3	2	5	0	1	0	1	1
		F	48	0	0	1	0	0	0	0	1	0	0	3	3	7	4	8	11	4	5	1	1
C444	Skin of Scalp and Neck	T	11	0	0	0	0	0	0	1	0	0	1	2	0	2	0	1	1	1	1	2	0
		M	9	0	0	0	0	0	0	0	0	0	1	2	0	2	0	1	1	1	1	1	0
		F	2	0	0	0	0	0	0	0	1	0	0	0	0	0	0	0	0	0	0	1	0
C445	Skin of Trunk	T	17	0	0	1	1	0	0	0	1	0	3	1	0	2	2	3	1	1	1	1	0
		M	8	0	0	1	1	0	0	0	1	0	1	1	0	0	0	2	1	0	0	0	0
		F	9	0	0	0	0	0	0	0	0	0	0	2	0	0	2	2	1	0	1	1	0
C446	Skin of upper limb & shoulder	T	15	0	0	0	1	0	0	0	2	1	1	0	0	0	2	3	2	1	1	1	0
		M	6	0	0	0	0	0	0	0	1	0	1	0	0	0	1	1	1	1	0	0	0
		F	9	0	0	0	1	0	0	0	1	1	0	0	0	0	1	2	1	0	1	1	0
C447	Skin of lower limb and hip	T	35	0	0	1	0	0	3	2	0	0	3	2	3	1	14	1	1	3	0	1	0
		M	19	0	0	1	0	0	1	0	0	3	2	2	1	3	1	1	3	0	1	0	0
		F	16	0	0	0	0	0	3	1	0	0	0	0	1	0	11	0	0	0	0	0	0
C449	Skin NOS	T	4	0	0	0	0	1	0	0	0	0	0	0	1	0	1	0	0	0	0	1	0
		M	1	0	0	0	0	1	0	0	0	0	0	0	0	0	0	0	0	0	0	0	0
		F	3	0	0	0	0	0	0	0	0	0	0	0	0	1	0	1	0	0	0	1	0
C480	Retroperitoneum	T	12	2	1	1	0	0	0	0	2	0	3	0	0	0	1	1	1	0	0	0	0
		M	4	2	0	1	0	0	0	0	1	0	0	0	0	0	0	0	0	0	0	0	0
		F	8	0	1	0	0	0	0	0	0	1	0	3	0	0	0	1	1	1	0	0	0

18

SIRIRAJ CANCER REGISTRY 2021

TABLE V : PRIMARY SITE BY AGE GROUP (cont.)

SITE / AGE - GROUP			1+	5+	10+	15+	20+	25+	30+	35+	40+	45+	50+	55+	60+	65+	70+	75+	80+	85+	90+	95+				
C481	Peritoneum: Specified pts	T	2	0	0	0	0	0	0	0	0	0	0	0	0	1	1	0	0	0	0	0	0			
		M	1	0	0	0	0	0	0	0	0	0	0	0	0	0	1	0	0	0	0	0	0	0		
		F	1	0	0	0	0	0	0	0	0	0	0	0	0	0	0	1	0	0	0	0	0	0		
C482	Peritoneum NOS	T	16	0	0	0	0	0	0	0	1	0	2	4	2	4	2	1	0	0	0	0	0	0		
		M	1	0	0	0	0	0	0	0	0	0	0	0	0	1	0	0	0	0	0	0	0	0		
		F	15	0	0	0	0	0	0	0	0	1	0	2	4	1	4	2	1	0	0	0	0	0	0	
C490	Connective: Head, Face, Neck	T	2	1	1	0	0	0	0	0	0	0	0	0	0	0	0	0	0	0	0	0	0	0		
		M	1	0	1	0	0	0	0	0	0	0	0	0	0	0	0	0	0	0	0	0	0	0	0	
		F	1	1	0	0	0	0	0	0	0	0	0	0	0	0	0	0	0	0	0	0	0	0	0	
C491	Connective Upperlimb Shoulder	T	11	0	0	0	1	1	2	0	0	1	0	1	2	1	2	0	0	0	0	0	0	0		
		M	6	0	0	0	1	0	2	0	0	1	0	1	1	0	0	0	0	0	0	0	0	0	0	
		F	5	0	0	0	0	1	0	0	0	0	0	0	1	1	2	0	0	0	0	0	0	0	0	
C492	Connective: Lower limb & hip	T	23	2	0	1	0	0	1	0	0	1	0	2	1	5	4	5	1	0	0	0	0	0		
		M	13	2	0	1	0	0	1	0	0	1	0	0	0	4	2	1	1	0	0	0	0	0	0	
		F	10	0	0	0	0	0	0	0	0	0	0	2	1	1	2	4	0	0	0	0	0	0	0	
C493	Connective: Thorax	T	4	0	0	1	0	0	0	1	0	0	0	0	0	1	0	1	0	0	0	0	0	0	0	
		M	4	0	0	1	0	0	0	1	0	0	0	0	0	1	0	1	0	0	0	0	0	0	0	
		F	0	0	0	0	0	0	0	0	0	0	0	0	0	0	0	0	0	0	0	0	0	0	0	0
C494	Connective: Abdomen	T	2	0	0	0	0	0	0	0	0	1	0	0	1	0	0	0	0	0	0	0	0	0	0	
		M	1	0	0	0	0	0	0	0	0	0	1	0	0	0	0	0	0	0	0	0	0	0	0	0
		F	1	0	0	0	0	0	0	0	0	0	0	0	0	1	0	0	0	0	0	0	0	0	0	0
C495	Connective: Pelvis	T	3	0	0	0	0	0	0	0	0	0	0	1	0	0	2	0	0	0	0	0	0	0	0	
		M	2	0	0	0	0	0	0	0	0	0	0	0	0	0	2	0	0	0	0	0	0	0	0	
		F	1	0	0	0	0	0	0	0	0	0	0	1	0	0	0	0	0	0	0	0	0	0	0	0
C496	Connective: Trunk NOS	T	4	0	0	0	0	0	0	0	0	0	2	0	0	1	0	1	0	0	0	0	0	0	0	
		M	3	0	0	0	0	0	0	0	0	0	2	0	0	0	0	1	0	0	0	0	0	0	0	
		F	1	0	0	0	0	0	0	0	0	0	0	0	0	1	0	0	0	0	0	0	0	0	0	0
C500	Nipple	T	5	0	0	0	0	0	0	0	0	0	0	0	0	3	1	0	1	0	0	0	0	0	0	
		M	0	0	0	0	0	0	0	0	0	0	0	0	0	0	0	0	0	0	0	0	0	0	0	
		F	5	0	0	0	0	0	0	0	0	0	0	0	0	3	1	0	1	0	0	0	0	0	0	
C501	Central portion of breast	T	52	0	0	0	0	0	0	0	1	7	7	10	5	7	7	3	3	2	0	0	0	0	0	
		M	0	0	0	0	0	0	0	0	0	0	0	0	0	0	0	0	0	0	0	0	0	0	0	
		F	52	0	0	0	0	0	0	0	1	7	7	10	5	7	7	3	3	2	0	0	0	0	0	0

19

SIRIRAJ CANCER REGISTRY 2021

TABLE V : PRIMARY SITE BY AGE GROUP (cont.)

SITE / AGE - GROUP			1+	5+	10+	15+	20+	25+	30+	35+	40+	45+	50+	55+	60+	65+	70+	75+	80+	85+	90+	95+	
C502	Upper-inner quadrant breast	T	85	0	0	0	0	0	1	8	3	11	14	14	12	11	5	2	2	2	0	0	
		M	0	0	0	0	0	0	0	0	0	0	0	0	0	0	0	0	0	0	0	0	0
		F	85	0	0	0	0	0	1	8	3	11	14	14	12	11	5	2	2	2	0	0	
C503	Lower-inner quadrant breast	T	46	0	0	0	0	1	0	0	3	7	5	10	8	4	5	1	1	1	0	0	
		M	0	0	0	0	0	0	0	0	0	0	0	0	0	0	0	0	0	0	0	0	0
		F	46	0	0	0	0	1	0	0	3	7	5	10	8	4	5	1	1	1	0	0	
C504	Upper-outer quadrant breast	T	238	0	0	0	0	0	4	7	20	36	28	26	42	35	15	15	4	5	0	1	
		M	1	0	0	0	0	0	0	0	0	0	0	0	0	0	0	1	0	0	0	0	
		F	237	0	0	0	0	0	4	7	20	36	28	26	42	35	15	14	4	5	0	1	
C505	Lower-outer quadrant breast	T	53	0	0	0	1	0	0	1	4	13	6	12	7	3	2	3	1	0	0	0	
		M	0	0	0	0	0	0	0	0	0	0	0	0	0	0	0	0	0	0	0	0	
		F	53	0	0	0	1	0	0	1	4	13	6	12	7	3	2	3	1	0	0	0	
C506	Axillary tail of breast	T	1	0	0	0	0	0	0	0	0	1	0	0	0	0	0	0	0	0	0	0	
		M	0	0	0	0	0	0	0	0	0	0	0	0	0	0	0	0	0	0	0	0	
		F	1	0	0	0	0	0	0	0	0	1	0	0	0	0	0	0	0	0	0	0	
C508	Overlapping lesion of breast	T	156	0	0	0	0	2	2	6	10	26	21	21	22	15	22	6	3	0	0	0	
		M	0	0	0	0	0	0	0	0	0	0	0	0	0	0	0	0	0	0	0	0	
		F	156	0	0	0	0	2	2	6	10	26	21	21	22	15	22	6	3	0	0	0	
C509	Breast NOS	T	138	0	0	0	1	1	4	7	9	16	17	30	14	14	12	3	4	3	1	2	
		M	2	0	0	0	0	0	0	0	0	0	0	0	1	1	0	0	0	0	0		
		F	136	0	0	0	1	1	4	7	9	16	17	30	13	13	12	3	4	3	1	2	
C510	Labium majus	T	1	0	0	0	0	0	0	0	0	1	0	0	0	0	0	0	0	0	0	0	
		M	0	0	0	0	0	0	0	0	0	0	0	0	0	0	0	0	0	0	0	0	
		F	1	0	0	0	0	0	0	0	0	1	0	0	0	0	0	0	0	0	0	0	
C519	Vulva NOS	T	9	0	0	0	0	0	0	0	1	0	0	0	0	2	2	2	0	1	1	0	
		M	0	0	0	0	0	0	0	0	0	0	0	0	0	0	0	0	0	0	0	0	
		F	9	0	0	0	0	0	0	0	1	0	0	0	0	2	2	2	0	1	1	0	
C529	Vagina NOS	T	12	0	0	0	0	0	0	1	0	0	1	1	3	1	1	1	2	1	0	0	
		M	0	0	0	0	0	0	0	0	0	0	0	0	0	0	0	0	0	0	0	0	
		F	12	0	0	0	0	0	0	1	0	0	1	1	3	1	1	1	2	1	0	0	
C539	Cervix uteri	T	174	0	0	0	0	5	18	14	14	16	15	20	21	21	13	9	5	2	1	0	
		M	0	0	0	0	0	0	0	0	0	0	0	0	0	0	0	0	0	0	0	0	
		F	174	0	0	0	0	5	18	14	14	16	15	20	21	21	13	9	5	2	1	0	

20

SIRIRAJ CANCER REGISTRY 2021

TABLE V : PRIMARY SITE BY AGE GROUP (cont.)

SITE / AGE - GROUP		1+	5+	10+	15+	20+	25+	30+	35+	40+	45+	50+	55+	60+	65+	70+	75+	80+	85+	90+	95+		
C541	Endometrium	T	138	0	0	0	0	0	4	6	9	9	13	23	21	26	11	7	7	1	1	0	
		M	0	0	0	0	0	0	0	0	0	0	0	0	0	0	0	0	0	0	0	0	0
		F	138	0	0	0	0	0	0	4	6	9	9	13	23	21	26	11	7	7	1	1	0
C542	Myometrium	T	1	0	0	0	0	0	0	0	0	0	0	0	0	0	1	0	0	0	0	0	
		M	0	0	0	0	0	0	0	0	0	0	0	0	0	0	0	0	0	0	0	0	0
		F	1	0	0	0	0	0	0	0	0	0	0	0	0	0	0	1	0	0	0	0	0
C548	Corpus uteri: Overlap	T	6	0	0	0	0	0	0	0	0	0	0	1	2	1	1	1	0	0	0	0	
		M	0	0	0	0	0	0	0	0	0	0	0	0	0	0	0	0	0	0	0	0	0
		F	6	0	0	0	0	0	0	0	0	0	0	1	2	1	1	1	0	0	0	0	0
C549	Corpus uteri	T	5	0	0	0	0	0	0	0	0	0	0	3	0	1	0	0	1	0	0	0	
		M	0	0	0	0	0	0	0	0	0	0	0	0	0	0	0	0	0	0	0	0	0
		F	5	0	0	0	0	0	0	0	0	0	0	3	0	1	0	0	1	0	0	0	0
C559	Uterus NOS	T	9	0	0	0	0	0	0	0	0	1	0	3	1	2	2	0	0	0	0	0	
		M	0	0	0	0	0	0	0	0	0	0	0	0	0	0	0	0	0	0	0	0	0
		F	9	0	0	0	0	0	0	0	0	1	0	3	1	2	2	0	0	0	0	0	0
C569	Ovary	T	100	0	0	1	4	1	3	2	1	6	14	10	18	12	12	10	4	1	0	0	1
		M	0	0	0	0	0	0	0	0	0	0	0	0	0	0	0	0	0	0	0	0	0
		F	100	0	0	1	4	1	3	2	1	6	14	10	18	12	12	10	4	1	0	0	1
C570	Fallopian tube	T	6	0	0	0	0	0	0	0	0	0	0	1	0	3	1	1	0	0	0	0	
		M	0	0	0	0	0	0	0	0	0	0	0	0	0	0	0	0	0	0	0	0	0
		F	6	0	0	0	0	0	0	0	0	0	0	1	0	3	1	1	0	0	0	0	0
C574	Uterine adnexa	T	4	0	0	0	0	0	0	0	0	0	2	1	0	0	1	0	0	0	0	0	
		M	0	0	0	0	0	0	0	0	0	0	0	0	0	0	0	0	0	0	0	0	0
		F	4	0	0	0	0	0	0	0	0	0	2	1	0	0	1	0	0	0	0	0	0
C589	Placenta	T	2	0	0	0	0	0	1	0	0	1	0	0	0	0	0	0	0	0	0	0	
		M	0	0	0	0	0	0	0	0	0	0	0	0	0	0	0	0	0	0	0	0	0
		F	2	0	0	0	0	0	1	0	0	1	0	0	0	0	0	0	0	0	0	0	0
C601	Glans penis	T	1	0	0	0	0	0	1	0	0	0	0	0	0	0	0	0	0	0	0	0	
		M	1	0	0	0	0	0	1	0	0	0	0	0	0	0	0	0	0	0	0	0	
		F	0	0	0	0	0	0	0	0	0	0	0	0	0	0	0	0	0	0	0	0	
C608	Penis: Overlap	T	1	0	0	0	0	0	0	0	0	0	0	0	0	0	0	0	0	0	0	1	
		M	1	0	0	0	0	0	0	0	0	0	0	0	0	0	0	0	0	0	0	1	
		F	0	0	0	0	0	0	0	0	0	0	0	0	0	0	0	0	0	0	0	0	

TABLE V : PRIMARY SITE BY AGE GROUP (cont.)

SITE / AGE - GROUP		1+	5+	10+	15+	20+	25+	30+	35+	40+	45+	50+	55+	60+	65+	70+	75+	80+	85+	90+	95+		
C609	Penis NOS	T	3	0	0	0	0	1	0	0	0	1	0	0	0	0	0	0	0	0	1	0	
		M	3	0	0	0	0	0	1	0	0	0	1	0	0	0	0	0	0	0	0	1	0
		F	0	0	0	0	0	0	0	0	0	0	0	0	0	0	0	0	0	0	0	0	0
C619	Prostate gland	T	403	0	0	0	0	0	0	0	0	2	3	23	41	88	102	82	42	15	5	0	
		M	403	0	0	0	0	0	0	0	0	2	3	23	41	88	102	82	42	15	5	0	
		F	0	0	0	0	0	0	0	0	0	0	0	0	0	0	0	0	0	0	0	0	
C621	Descended testis	T	1	0	0	0	0	0	0	1	0	0	0	0	0	0	0	0	0	0	0	0	
		M	1	0	0	0	0	0	0	1	0	0	0	0	0	0	0	0	0	0	0	0	
		F	0	0	0	0	0	0	0	0	0	0	0	0	0	0	0	0	0	0	0	0	
C629	Testis NOS	T	5	0	0	0	0	3	0	0	0	0	0	0	1	0	0	0	0	1	0	0	
		M	5	0	0	0	0	3	0	0	0	0	0	0	1	0	0	0	0	1	0	0	
		F	0	0	0	0	0	0	0	0	0	0	0	0	0	0	0	0	0	0	0	0	
C632	Scrotum NOS	T	3	0	0	0	0	0	0	0	0	0	1	0	0	0	0	0	2	0	0	0	
		M	3	0	0	0	0	0	0	0	0	0	1	0	0	0	0	0	2	0	0	0	
		F	0	0	0	0	0	0	0	0	0	0	0	0	0	0	0	0	0	0	0	0	
C649	Kidney NOS	T	85	2	0	0	0	1	3	1	4	6	7	8	15	14	12	7	2	2	1	0	
		M	57	0	0	0	0	0	0	1	3	5	4	6	8	11	10	6	1	2	0	0	
		F	28	2	0	0	0	1	3	0	1	1	3	2	7	3	2	1	1	0	1	0	
C659	Renal pelvis	T	17	0	0	0	0	0	0	1	1	0	1	0	1	3	2	6	1	0	0	1	
		M	11	0	0	0	0	0	0	1	0	0	0	0	1	3	2	4	0	0	0	0	
		F	6	0	0	0	0	0	0	0	1	0	1	0	0	0	0	2	1	0	0	1	
C669	Ureter	T	12	0	0	0	0	0	0	0	0	0	2	0	1	2	1	2	2	2	0	0	
		M	9	0	0	0	0	0	0	0	0	0	2	0	1	1	1	1	2	1	0	0	
		F	3	0	0	0	0	0	0	0	0	0	0	0	0	1	0	1	0	1	0	0	
C670	Trigone of Bladder	T	2	0	0	0	0	0	0	0	0	0	1	0	0	0	1	0	0	0	0	0	
		M	0	0	0	0	0	0	0	0	0	0	0	0	0	0	0	0	0	0	0	0	
		F	2	0	0	0	0	0	0	0	0	0	0	1	0	0	1	0	0	0	0	0	
C671	Dome of Bladder	T	1	0	0	0	0	0	0	0	0	0	0	0	0	0	0	0	0	1	0	0	
		M	1	0	0	0	0	0	0	0	0	0	0	0	0	0	0	0	0	1	0	0	
		F	0	0	0	0	0	0	0	0	0	0	0	0	0	0	0	0	0	0	0	0	
C672	Lateral wall of Bladder	T	3	0	0	0	0	0	0	0	0	1	0	1	1	0	0	0	0	0	0	0	
		M	3	0	0	0	0	0	0	0	0	1	0	1	1	0	0	0	0	0	0	0	
		F	0	0	0	0	0	0	0	0	0	0	0	0	0	0	0	0	0	0	0	0	

TABLE V : PRIMARY SITE BY AGE GROUP (cont.)

SITE / AGE - GROUP			1+	5+	10+	15+	20+	25+	30+	35+	40+	45+	50+	55+	60+	65+	70+	75+	80+	85+	90+	95+		
C673	Anterior wall of Bladder	T	1	0	0	0	0	0	0	0	0	0	0	0	0	0	1	0	0	0	0	0	0	
		M	1	0	0	0	0	0	0	0	0	0	0	0	0	0	0	1	0	0	0	0	0	0
		F	0	0	0	0	0	0	0	0	0	0	0	0	0	0	0	0	0	0	0	0	0	0
C674	Posterior wall of Bladder	T	1	0	0	0	0	0	0	0	0	0	0	0	0	1	0	0	0	0	0	0	0	
		M	0	0	0	0	0	0	0	0	0	0	0	0	0	0	0	0	0	0	0	0	0	0
		F	1	0	0	0	0	0	0	0	0	0	0	0	0	1	0	0	0	0	0	0	0	0
C675	Bladder Neck	T	1	0	0	0	0	0	0	0	0	0	0	0	0	0	0	1	0	0	0	0	0	
		M	0	0	0	0	0	0	0	0	0	0	0	0	0	0	0	0	0	0	0	0	0	0
		F	1	0	0	0	0	0	0	0	0	0	0	0	0	0	0	1	0	0	0	0	0	0
C678	Bladder: Overlap	T	7	0	0	0	0	0	0	0	0	0	0	0	2	0	1	0	3	1	0	0	0	
		M	5	0	0	0	0	0	0	0	0	0	0	0	1	0	1	0	2	1	0	0	0	
		F	2	0	0	0	0	0	0	0	0	0	0	0	1	0	0	0	1	0	0	0	0	
C679	Bladder NOS	T	88	0	0	0	0	0	0	1	0	0	2	6	12	14	13	11	16	9	4	0	0	
		M	69	0	0	0	0	0	0	1	0	0	2	6	12	11	10	8	11	8	0	0	0	
		F	19	0	0	0	0	0	0	0	0	0	0	0	0	3	3	3	5	1	4	0	0	
C680	Urethra	T	5	0	0	0	0	0	0	1	0	0	0	0	0	0	2	1	1	0	0	0	0	
		M	4	0	0	0	0	0	0	0	0	0	0	0	0	0	2	1	1	0	0	0	0	
		F	1	0	0	0	0	0	0	1	0	0	0	0	0	0	0	0	0	0	0	0	0	
C688	Urinary organs: Overlap	T	2	0	0	0	0	0	0	0	0	0	0	0	0	0	0	1	0	1	0	0	0	
		M	0	0	0	0	0	0	0	0	0	0	0	0	0	0	0	0	0	0	0	0	0	0
		F	2	0	0	0	0	0	0	0	0	0	0	0	0	0	0	1	0	1	0	0	0	
C690	Conjunctiva	T	2	0	0	0	0	1	0	0	0	0	0	1	0	0	0	0	0	0	0	0	0	
		M	1	0	0	0	0	0	0	0	0	0	0	1	0	0	0	0	0	0	0	0	0	
		F	1	0	0	0	0	1	0	0	0	0	0	0	0	0	0	0	0	0	0	0	0	
C692	Retina	T	7	5	1	0	0	0	0	0	0	0	0	0	1	0	0	0	0	0	0	0	0	
		M	6	5	1	0	0	0	0	0	0	0	0	0	0	0	0	0	0	0	0	0	0	
		F	1	0	0	0	0	0	0	0	0	0	0	0	1	0	0	0	0	0	0	0	0	
C695	Lacrimal Gland	T	2	0	0	0	0	1	0	0	0	0	0	1	0	0	0	0	0	0	0	0	0	
		M	1	0	0	0	0	0	0	0	0	0	0	1	0	0	0	0	0	0	0	0	0	
		F	1	0	0	0	0	1	0	0	0	0	0	0	0	0	0	0	0	0	0	0	0	
C696	Orbit NOS	T	8	0	0	0	0	0	0	0	1	0	1	0	4	1	0	1	0	0	0	0	0	
		M	4	0	0	0	0	0	0	0	1	0	0	0	3	0	0	0	0	0	0	0	0	
		F	4	0	0	0	0	0	0	0	0	0	1	0	1	1	0	1	0	0	0	0	0	

23

SIRIRAJ CANCER REGISTRY 2021

TABLE V : PRIMARY SITE BY AGE GROUP (cont.)

SITE / AGE - GROUP			1+	5+	10+	15+	20+	25+	30+	35+	40+	45+	50+	55+	60+	65+	70+	75+	80+	85+	90+	95+		
C699	Eye NOS	T	1	0	0	0	0	0	0	1	0	0	0	0	0	0	0	0	0	0	0	0	0	
		M	0	0	0	0	0	0	0	0	0	0	0	0	0	0	0	0	0	0	0	0	0	0
		F	1	0	0	0	0	0	0	0	1	0	0	0	0	0	0	0	0	0	0	0	0	0
C710	Cerebrum	T	12	0	0	0	2	0	1	0	3	3	0	0	2	0	0	0	0	0	1	0	0	0
		M	4	0	0	0	0	0	0	0	1	0	0	0	2	0	0	0	0	0	1	0	0	0
		F	8	0	0	0	2	0	1	0	2	3	0	0	0	0	0	0	0	0	0	0	0	0
C711	Frontal Lobe	T	18	0	0	1	1	1	0	1	0	2	0	2	2	1	4	1	1	1	0	0	0	0
		M	8	0	0	0	0	1	0	1	0	1	0	1	0	0	2	1	1	0	0	0	0	0
		F	10	0	0	1	1	0	0	0	0	1	0	1	2	1	2	0	0	1	0	0	0	0
C712	Temporal Lobe	T	12	0	0	0	1	0	0	0	0	1	1	1	3	2	2	1	0	0	0	0	0	0
		M	10	0	0	0	1	0	0	0	0	1	1	1	3	2	1	0	0	0	0	0	0	0
		F	2	0	0	0	0	0	0	0	0	0	0	0	0	0	1	1	0	0	0	0	0	0
C713	Parietal Lobe	T	5	0	1	0	0	0	0	0	1	0	0	2	1	0	0	0	0	0	0	0	0	0
		M	4	0	1	0	0	0	0	0	1	0	0	1	1	0	0	0	0	0	0	0	0	0
		F	1	0	0	0	0	0	0	0	0	0	0	1	0	0	0	0	0	0	0	0	0	0
C715	Ventricle NOS	T	1	0	0	0	0	0	0	0	1	0	0	0	0	0	0	0	0	0	0	0	0	0
		M	1	0	0	0	0	0	0	0	1	0	0	0	0	0	0	0	0	0	0	0	0	0
		F	0	0	0	0	0	0	0	0	0	0	0	0	0	0	0	0	0	0	0	0	0	0
C716	Cerebellum NOS	T	5	1	0	1	0	0	0	0	0	0	0	0	1	0	1	0	0	1	0	0	0	0
		M	3	1	0	0	0	0	0	0	0	0	0	0	0	0	1	0	0	1	0	0	0	0
		F	2	0	0	1	0	0	0	0	0	0	0	0	1	0	0	0	0	0	0	0	0	0
C717	Brain Stem	T	6	1	2	0	1	0	0	1	0	0	0	1	0	0	0	0	0	0	0	0	0	0
		M	3	0	0	0	1	0	0	1	0	0	0	1	0	0	0	0	0	0	0	0	0	0
		F	3	1	2	0	0	0	0	0	0	0	0	0	0	0	0	0	0	0	0	0	0	0
C718	Brain: Overlap	T	9	1	0	0	0	0	1	0	1	1	0	0	3	0	0	1	0	1	0	0	0	0
		M	4	0	0	0	0	0	0	0	1	0	0	0	2	0	0	0	0	1	0	0	0	0
		F	5	1	0	0	0	0	1	0	0	1	0	0	1	0	0	1	0	0	0	0	0	0
C719	Brain NOS	T	11	1	1	2	0	0	0	0	0	0	1	0	1	0	1	1	2	0	1	0	0	0
		M	6	0	0	0	0	0	0	0	0	0	0	0	1	0	1	1	2	0	1	0	0	0
		F	5	1	1	2	0	0	0	0	0	0	1	0	0	0	0	0	0	0	0	0	0	0
C720	Spinal Cord	T	3	1	0	0	0	0	0	0	0	0	0	0	1	1	0	0	0	0	0	0	0	0
		M	3	1	0	0	0	0	0	0	0	0	0	0	1	1	0	0	0	0	0	0	0	0
		F	0	0	0	0	0	0	0	0	0	0	0	0	0	0	0	0	0	0	0	0	0	0

TABLE V : PRIMARY SITE BY AGE GROUP (cont.)

SITE / AGE - GROUP			1+	5+	10+	15+	20+	25+	30+	35+	40+	45+	50+	55+	60+	65+	70+	75+	80+	85+	90+	95+			
C723	Optic Nerve	T	2	1	0	0	0	0	0	0	0	0	0	0	0	1	0	0	0	0	0	0	0		
		M	1	1	0	0	0	0	0	0	0	0	0	0	0	0	0	0	0	0	0	0	0	0	
		F	1	0	0	0	0	0	0	0	0	0	0	0	0	0	1	0	0	0	0	0	0	0	
C729	Nervous System NOS	T	1	0	0	0	0	0	0	0	0	0	0	0	0	0	0	0	1	0	0	0	0		
		M	1	0	0	0	0	0	0	0	0	0	0	0	0	0	0	0	1	0	0	0	0	0	
		F	0	0	0	0	0	0	0	0	0	0	0	0	0	0	0	0	0	0	0	0	0	0	
C739	Thyroid Gland	T	239	0	0	0	2	5	18	18	26	35	18	19	29	23	20	12	5	3	1	5	0		
		M	53	0	0	0	0	1	1	1	7	8	6	4	7	6	5	2	1	1	0	3	0	0	
		F	186	0	0	0	2	4	17	17	19	27	12	15	22	17	15	10	4	2	1	2	0	0	
C741	Medulla of Adrenal Gland	T	2	0	0	0	0	0	0	0	1	0	0	1	0	0	0	0	0	0	0	0	0	0	
		M	0	0	0	0	0	0	0	0	0	0	0	0	0	0	0	0	0	0	0	0	0	0	
		F	2	0	0	0	0	0	0	0	1	0	0	1	0	0	0	0	0	0	0	0	0	0	0
C749	Adrenal Gland NOS	T	7	2	2	0	1	0	0	0	0	0	0	1	0	0	1	0	0	0	0	0	0	0	
		M	4	2	1	0	0	0	0	0	0	0	0	0	1	0	0	0	0	0	0	0	0	0	0
		F	3	0	1	0	1	0	0	0	0	0	0	0	0	0	0	1	0	0	0	0	0	0	0
C750	Parathyroid Gland	T	1	0	0	0	0	0	0	0	0	1	0	0	0	0	0	0	0	0	0	0	0	0	
		M	0	0	0	0	0	0	0	0	0	0	0	0	0	0	0	0	0	0	0	0	0	0	0
		F	1	0	0	0	0	0	0	0	0	0	1	0	0	0	0	0	0	0	0	0	0	0	0
C753	Pineal Gland	T	2	0	0	1	0	0	1	0	0	0	0	0	0	0	0	0	0	0	0	0	0	0	
		M	1	0	0	1	0	0	0	0	0	0	0	0	0	0	0	0	0	0	0	0	0	0	0
		F	1	0	0	0	0	0	0	1	0	0	0	0	0	0	0	0	0	0	0	0	0	0	0
C762	Abdomen NOS	T	4	0	0	0	0	0	0	0	1	0	0	0	0	0	1	1	0	1	0	0	0	0	
		M	2	0	0	0	0	0	0	0	0	0	0	0	0	0	1	1	0	0	0	0	0	0	0
		F	2	0	0	0	0	0	0	0	1	0	0	0	0	0	0	0	0	1	0	0	0	0	0
C763	Pelvis NOS	T	2	1	0	0	0	0	1	0	0	0	0	0	0	0	0	0	0	0	0	0	0	0	
		M	1	1	0	0	0	0	0	0	0	0	0	0	0	0	0	0	0	0	0	0	0	0	0
		F	1	0	0	0	0	0	1	0	0	0	0	0	0	0	0	0	0	0	0	0	0	0	0
C770	Lymph Nodes: HeadFaceNeck	T	58	1	0	1	5	4	2	2	1	1	3	3	3	9	8	8	3	3	0	1	0	0	
		M	32	1	0	1	3	1	0	2	1	1	3	2	0	6	4	3	2	1	0	1	0	0	
		F	26	0	0	0	2	3	2	0	0	0	0	1	3	3	4	5	1	2	0	0	0	0	
C771	Intrathoracic Lymph Nodes	T	3	0	0	0	0	0	0	0	0	0	0	1	1	0	0	1	0	0	0	0	0	0	
		M	3	0	0	0	0	0	0	0	0	0	0	0	1	1	0	0	1	0	0	0	0	0	
		F	0	0	0	0	0	0	0	0	0	0	0	0	0	0	0	0	0	0	0	0	0	0	0

TABLE V : PRIMARY SITE BY AGE GROUP (cont.)

SITE / AGE - GROUP			1+	5+	10+	15+	20+	25+	30+	35+	40+	45+	50+	55+	60+	65+	70+	75+	80+	85+	90+	95+	
C772	Intra-abdominal LymphNodes	T	13	0	0	0	0	0	0	0	0	0	1	0	0	3	1	6	1	0	1	0	
		M	4	0	0	0	0	0	0	0	0	0	0	1	0	0	0	0	3	0	0	0	0
		F	9	0	0	0	0	0	0	0	0	0	0	0	0	0	3	1	3	1	0	1	0
C773	Lymph Nodes of axilla or arm	T	4	0	0	0	0	2	0	0	0	0	0	0	0	0	0	2	0	0	0	0	
		M	2	0	0	0	0	1	0	0	0	0	0	0	0	0	0	0	1	0	0	0	0
		F	2	0	0	0	0	1	0	0	0	0	0	0	0	0	0	0	1	0	0	0	0
C774	Lymph Nodes: Leg	T	18	0	0	0	0	0	0	1	1	1	0	2	3	3	3	3	0	1	0	0	
		M	11	0	0	0	0	0	0	0	1	1	0	2	2	1	2	2	0	0	0	0	0
		F	7	0	0	0	0	0	0	1	0	0	0	0	1	2	1	1	0	1	0	0	0
C775	Pelvic Lymph Nodes	T	2	0	0	0	0	0	0	0	0	0	0	0	0	1	0	0	0	1	0	0	
		M	2	0	0	0	0	0	0	0	0	0	0	0	0	1	0	0	0	1	0	0	
		F	0	0	0	0	0	0	0	0	0	0	0	0	0	0	0	0	0	0	0	0	0
C779	Lymph Node NOS	T	3	0	0	0	0	1	0	0	0	1	0	0	0	0	1	0	0	0	0	0	
		M	1	0	0	0	0	0	0	0	0	1	0	0	0	0	0	0	0	0	0	0	0
		F	2	0	0	0	0	1	0	0	0	0	0	0	0	0	1	0	0	0	0	0	0
C809	Unknown Primary Site	T	59	0	0	0	0	0	2	0	2	3	6	11	10	4	7	4	4	5	1	0	
		M	25	0	0	0	0	0	1	0	1	1	1	5	7	1	2	0	3	3	0	0	
		F	34	0	0	0	0	0	1	0	1	2	5	6	3	3	5	4	1	2	1	0	
Z850	Personal history of malignant neoplasm of digestive organs	T	4	0	0	0	0	0	0	0	1	0	1	0	0	2	0	0	0	0	0	0	
		M	2	0	0	0	0	0	0	0	0	0	0	0	0	2	0	0	0	0	0	0	
		F	2	0	0	0	0	0	0	0	1	0	1	0	0	0	0	0	0	0	0	0	0
Z851	Personal history of malignant neoplasm of trachea, bronchus and lung	T	2	0	0	0	0	0	0	0	1	0	0	0	0	0	1	0	0	0	0	0	
		M	1	0	0	0	0	0	0	0	0	0	0	0	0	0	0	1	0	0	0	0	
		F	1	0	0	0	0	0	0	0	1	0	0	0	0	0	0	0	0	0	0	0	0
Z853	Personal history of malignant neoplasm of breast	T	4	0	0	0	0	0	0	0	0	0	2	1	0	1	0	0	0	0	0	0	
		M	0	0	0	0	0	0	0	0	0	0	0	0	0	0	0	0	0	0	0	0	0
		F	4	0	0	0	0	0	0	0	0	0	2	1	0	1	0	0	0	0	0	0	0
Z854	Personal history of malignant neoplasm of genital organs	T	1	0	0	0	0	0	0	0	0	0	0	0	0	0	1	0	0	0	0	0	
		M	1	0	0	0	0	0	0	0	0	0	0	0	0	0	1	0	0	0	0	0	
		F	0	0	0	0	0	0	0	0	0	0	0	0	0	0	0	0	0	0	0	0	0
Z855	Personal history of malignant neoplasm of urinary tract	T	1	0	0	0	0	0	0	0	0	0	0	0	1	0	0	0	0	0	0	0	
		M	1	0	0	0	0	0	0	0	0	0	0	0	1	0	0	0	0	0	0	0	
		F	0	0	0	0	0	0	0	0	0	0	0	0	0	0	0	0	0	0	0	0	0

26

SIRIRAJ CANCER REGISTRY 2021

TABLE V : PRIMARY SITE BY AGE GROUP (cont.)

SITE / AGE - GROUP			1+	5+	10+	15+	20+	25+	30+	35+	40+	45+	50+	55+	60+	65+	70+	75+	80+	85+	90+	95+		
Z858	Personal history of malignant neoplasm of other organs and systems	T	1	0	0	0	0	0	0	0	0	0	0	0	0	0	1	0	0	0	0	0	0	
		M	1	0	0	0	0	0	0	0	0	0	0	0	0	0	0	1	0	0	0	0	0	0
		F	0	0	0	0	0	0	0	0	0	0	0	0	0	0	0	0	0	0	0	0	0	0

TABLE VI : PATHOLOGY ACCORDING TO SITE

CODE	GRAND TOTAL	No. of Cases		TOTAL
		MALE 2,412	FEMALE 2,747	
C00	MALIGNANT NEOPLASM OF LIP	3	3	6
	80703 Squamous cell carcinoma, NOS	2	3	5
	82003 Adenoid cystic carcinoma	1	0	1
C01-C02	MALIGNANT NEOPLASM OF TONGUE	53	23	76
	80103 Carcinoma, NOS	1	0	1
	80703 Squamous cell carcinoma, NOS	41	22	63
	80713 Squamous cell carcinoma, keratinizing, NOS	8	1	9
	96803 Diffuse large B-cell lymphoma, NOS	3	0	3
C03-C06	MALIGNANT NEOPLASM OF GUM,FLOOR OF MOUTH, PALATE AND OTHER UNSPECIFIED PARTS OF MOUTH	26	15	41
	80703 Squamous cell carcinoma, NOS	21	13	34
	80713 Squamous cell carcinoma, keratinizing, NOS	0	1	1
	80723 Squamous cell carcinoma, large cell, nonkeratinizing, NOS	1	0	1
	80743 Squamous cell carcinoma, spindle cell	1	0	1
	80833 Basaloid squamous cell carcinoma	1	0	1
	85603 Adenosquamous carcinoma	1	0	1
	96803 Diffuse large B-cell lymphoma, NOS	0	1	1
	96873 Burkitt lymphoma, NOS	1	0	1
C07-C08	MALIGNANT NEOPLASM OF PAROTID AND OTHER MAJOR SALIVARY GLANDS	8	10	18
	80103 Carcinoma, NOS	2	0	2
	80703 Squamous cell carcinoma, NOS	1	0	1
	80823 Lymphoepithelial carcinoma	0	1	1
	81473 Basal cell adenocarcinoma	0	1	1
	82003 Adenoid cystic carcinoma	4	2	6
	84303 Mucoepidermoid carcinoma	1	3	4
	85503 Acinar cell carcinoma	0	1	1
	89823 Myoepithelial carcinoma	0	2	2
C09	MALIGNANT NEOPLASM OF TONSIL	18	4	22
	80003 Neoplasm, malignant (No histological proof)	1	0	1
	80703 Squamous cell carcinoma, NOS	13	2	15
	80713 Squamous cell carcinoma, keratinizing, NOS	1	0	1
	81403 Adenocarcinoma, NOS	1	0	1
	96733 Mantle cell lymphoma	1	0	1
	96803 Diffuse large B-cell lymphoma, NOS	1	1	2
	96903 Follicular lymphoma, NOS	0	1	1
C10	MALIGNANT NEOPLASM OF OROPHARYNX	11	2	13
	80703 Squamous cell carcinoma, NOS	9	1	10
	80713 Squamous cell carcinoma, keratinizing, NOS	1	1	2
	81403 Adenocarcinoma, NOS	1	0	1
C11	MALIGNANT NEOPLASM OF NASOPHARYNX	46	30	76
	80003 Neoplasm, malignant (No histological proof)	1	0	1
	80103 Carcinoma, NOS	2	2	4
	80203 Carcinoma, undifferentiated, NOS	2	0	2
	80703 Squamous cell carcinoma, NOS	1	1	2
	80713 Squamous cell carcinoma, keratinizing, NOS	0	1	1
	80723 Squamous cell carcinoma, large cell, nonkeratinizing, NOS	19	13	32
	80733 Squamous cell carcinoma, small cell, nonkeratinizing	4	4	8

TABLE VI : PATHOLOGY ACCORDING TO SITE (cont.)

		No. of Cases		TOTAL
		MALE	FEMALE	
C19	MALIGNANT NEOPLASM OF RECTOSIGMOID	26	9	35
	80003 Neoplasm, malignant (No histological proof)	0	1	1
	81403 Adenocarcinoma, NOS	25	8	33
	95903 Malignant lymphoma, NOS	1	0	1
C20	MALIGNANT NEOPLASM OF RECTUM	97	74	171
	80003 Neoplasm, malignant (No histological proof)	3	1	4
	81403 Adenocarcinoma, NOS	89	67	156
	82493 Neuroendocrine tumor, grade 2	0	2	2
	84803 Mucinous adenocarcinoma	2	2	4
	84903 Signet ring cell carcinoma	0	1	1
	89363 Gastrointestinal stromal tumor	2	1	3
	96803 Diffuse large B-cell lymphoma, NOS	1	0	1
C21	MALIGNANT NEOPLASM OF ANUS AND ANAL CANAL	5	6	11
	80703 Squamous cell carcinoma, NOS	0	4	4
	81403 Adenocarcinoma, NOS	3	2	5
	84803 Mucinous adenocarcinoma	1	0	1
	87203 Malignant melanoma, NOS	1	0	1
C22	MALIGNANT NEOPLASM OF LIVER AND INTRAHEPATIC BILE DUCTS	318	124	442
	80003 Neoplasm, malignant (No histological proof)	200	69	269
	80103 Carcinoma, NOS	2	0	2
	81403 Adenocarcinoma, NOS	18	17	35
	81603 Cholangiocarcinoma (C22.1, C24.0)	16	7	23
	81703 Hepatocellular carcinoma, NOS (C22.0)	78	24	102
	81713 Hepatocellular carcinoma, fibrolamellar (C22.0)	0	1	1
	81723 Hepatocellular carcinoma, scirrhous (C22.0)	0	1	1
	81803 Combined hepatocellular carcinoma and cholangiocarcinoma	2	1	3
	85033 Intraductal papillary adenocarcinoma with invasion (C50._)	0	2	2
	89703 Hepatoblastoma, NOS (C22.0)	1	2	3
	96803 Diffuse large B-cell lymphoma, NOS	1	0	1
				0
C23	MALIGNANT NEOPLASM OF GALL BLADDER	5	12	17
	80003 Neoplasm, malignant (No histological proof)	2	2	4
	80103 Carcinoma, NOS	0	1	1
	81403 Adenocarcinoma, NOS	3	9	12
C24	MALIGNANT NEOPLASM OF OTHER AND UNSPECIFIED PARTS AND BILIARY TRACT	19	14	33
	80003 Neoplasm, malignant (No histological proof)	3	1	4
	80103 Carcinoma, NOS	1	1	2
	81403 Adenocarcinoma, NOS	14	11	25
	81603 Cholangiocarcinoma (C22.1, C24.0)	1	1	2
C25	MALIGNANT NEOPLASM OF PANCREAS	48	67	115
	80003 Neoplasm, malignant (No histological proof)	8	18	26
	80103 Carcinoma, NOS	1	1	2
	81403 Adenocarcinoma, NOS	35	36	71
	82403 Neuroendocrine tumor, NOS	0	1	1
	82493 Neuroendocrine tumor, grade 2	2	3	5
	84533 Intraductal papillary mucinous neoplasm with an associated ir	0	3	3
	85003 Infiltrating duct carcinoma, NOS (C50._)	1	4	5
	89363 Gastrointestinal stromal tumor	0	1	1
	96803 Diffuse large B-cell lymphoma, NOS	1	0	1

TABLE VI : PATHOLOGY ACCORDING TO SITE (cont.)

		No. of Cases		
		MALE	FEMALE	TOTAL
C30	MALIGNANT NEOPLASM OF NASAL CAVITY AND MIDDLE EAR	12	6	18
	80203 Carcinoma, undifferentiated, NOS	1	1	2
	80413 Small cell carcinoma, NOS	1	1	2
	80703 Squamous cell carcinoma, NOS	3	0	3
	82003 Adenoid cystic carcinoma	1	0	1
	82493 Neuroendocrine tumor, grade 2	0	1	1
	85603 Adenosquamous carcinoma	1	0	1
	87203 Malignant melanoma, NOS	0	1	1
	93643 Ewing sarcoma	1	0	1
	95223 Olfactory neuroblastoma (C30.0)	1	0	1
	96803 Diffuse large B-cell lymphoma, NOS	1	1	2
	97193 NK/T-cell lymphoma, nasal and nasal type	0	1	1
	97313 Plasmacytoma, NOS	1	0	1
	97343 Plasmacytoma, extramedullary	1	0	1
C31	MALIGNANT NEOPLASM OF ACCESSORY SINUSES	8	3	11
	80703 Squamous cell carcinoma, NOS	3	0	3
	80713 Squamous cell carcinoma, keratinizing, NOS	2	0	2
	80723 Squamous cell carcinoma, large cell, nonkeratinizing, NOS	0	1	1
	82003 Adenoid cystic carcinoma	1	1	2
	88303 Malignant fibrous histiocytoma	1	0	1
	96803 Diffuse large B-cell lymphoma, NOS	1	1	2
C32	MALIGNANT NEOPLASM OF LARYNX	35	9	44
	80523 Papillary squamous cell carcinoma	1	1	2
	80703 Squamous cell carcinoma, NOS	30	7	37
	80713 Squamous cell carcinoma, keratinizing, NOS	4	0	4
	80723 Squamous cell carcinoma, large cell, nonkeratinizing, NOS	0	1	1
C33-C34	MALIG NEOPLASM OF TRACHEA BRONCHUS AND LUNG	315	223	538
	80003 Neoplasm, malignant (No histological proof)	16	10	26
	80103 Carcinoma, NOS	21	12	33
	80123 Large cell carcinoma, NOS	2	3	5
	80223 Pleomorphic carcinoma	1	0	1
	80413 Small cell carcinoma, NOS	18	5	23
	80423 Oat cell carcinoma (C34._)	0	1	1
	80463 Non-small cell carcinoma (C34._)	26	4	30
	80703 Squamous cell carcinoma, NOS	29	4	33
	80713 Squamous cell carcinoma, keratinizing, NOS	1	0	1
	80723 Squamous cell carcinoma, large cell, nonkeratinizing, NOS	1	0	1
	80823 Lymphoepithelial carcinoma	1	0	1
	80833 Basaloid squamous cell carcinoma	1	0	1
	81403 Adenocarcinoma, NOS	146	116	262
	82303 Solid carcinoma, NOS	5	4	9
	82463 Neuroendocrine carcinoma, NOS	5	0	5
	82493 Neuroendocrine tumor, grade 2	1	0	1
	82503 Lepidic adenocarcinoma (C34._)	1	0	1
	82533 Adenocarcinoma of lung, mucinous (C34._)	3	6	9
	82553 Adenocarcinoma with mixed subtypes	0	2	2
	82603 Papillary adenocarcinoma, NOS	10	17	27
	82653 Micropapillary carcinoma, NOS (C18._, C19.9, C20.9, C34._)	2	2	4
	84303 Mucoepidermoid carcinoma	0	1	1
	85513 Acinar cell cystadenocarcinoma	20	32	52
	85603 Adenosquamous carcinoma	3	1	4
	87203 Malignant melanoma, NOS	1	0	1
	96803 Diffuse large B-cell lymphoma, NOS	1	0	1
	96993 Marginal zone B-cell lymphoma, NOS	0	3	3

TABLE VI : PATHOLOGY ACCORDING TO SITE (cont.)

		No. of Cases		TOTAL
		MALE	FEMALE	
C37	MALIGNANT NEOPLASM OF THYMUS	8	9	17
	80333 Pseudosarcomatous carcinoma	1	0	1
	80703 Squamous cell carcinoma, NOS	3	2	5
	80833 Basaloid squamous cell carcinoma	1	0	1
	84803 Mucinous adenocarcinoma	0	1	1
	85803 Thymoma, NOS (C37.9)	0	1	1
	85813 Thymoma, type A (C37.9)	0	2	2
	85823 Thymoma, type AB (C37.9)	1	2	3
	85843 Thymoma, type B2 (C37.9)	1	1	2
	85863 Thymic carcinoma, NOS (C37.9)	1	0	1
C38	MALIGNANT NEOPLASM OF HEART, MEDIASTINUM AND PLEURA	13	5	18
	88503 Liposarcoma, NOS	1	0	1
	90533 Mesothelioma, biphasic, malignant	0	1	1
	90643 Germinoma	2	0	2
	90713 Yolk sac tumor, NOS	1	0	1
	90803 Teratoma, malignant, NOS	1	0	1
	95003 Neuroblastoma, NOS	1	0	1
	95913 Malignant lymphoma, non-Hodgkin, NOS	0	1	1
	96633 Hodgkin lymphoma, nodular sclerosis, NOS	1	0	1
	96793 Mediastinal large B-cell lymphoma (C38.3)	0	2	2
	96803 Diffuse large B-cell lymphoma, NOS	5	1	6
	97023 Mature T-cell lymphoma, NOS	1	0	1
C40-C41	MALIGNANT NEOPLASM OF BONE AND CARTILAGE	19	11	30
	80703 Squamous cell carcinoma, NOS	1	0	1
	91803 Osteosarcoma, NOS (C40._, C41._)	7	3	10
	92203 Chondrosarcoma, NOS (C40._, C41._)	1	3	4
	92503 Giant cell tumor of bone, malignant (C40._, C41._)	1	0	1
	93643 Ewing sarcoma	1	0	1
	93703 Chordoma, NOS	1	1	2
	93713 Chondroid chordoma	1	0	1
	95003 Neuroblastoma, NOS	1	0	1
	95403 Malignant peripheral nerve sheath tumor, NOS	0	1	1
	96803 Diffuse large B-cell lymphoma, NOS	4	3	7
	97313 Plasmacytoma, NOS	1	0	1
C42	MALIGNANT NEOPLASM OF HEMATOPOIETIC AND RETICULOENDOTHELIAL SYSTEMS	133	119	252
	96713 Lymphoplasmacytic lymphoma	1	0	1
	96733 Mantle cell lymphoma	1	0	1
	96803 Diffuse large B-cell lymphoma, NOS	1	3	4
	96873 Burkitt lymphoma, NOS	3	2	5
	96893 Splenic marginal zone B-cell lymphoma (C42.2)	1	1	2
	96903 Follicular lymphoma, NOS	1	1	2
	96993 Marginal zone B-cell lymphoma, NOS	2	2	4
	97023 Mature T-cell lymphoma, NOS	4	1	5
	97143 Anaplastic large cell lymphoma, T-cell and -cell type	1	1	2
	97323 Plasma cell myeloma (C42.1)	40	37	77
	97413 Malignant mastocytosis	1	0	1
	97613 Waldenstrom macroglobulinemia (C42.0)	1	0	1
	98113 B lymphoblastic leukemia/lymphoma, NOS	13	8	21
	98233 B-cell chronic lymphocytic leukemia/small lymphocytic lymphoc	2	2	4
	98373 Precursor T-cell lymphoblastic leukemia	1	1	2
	98403 Acute erythroid leukemia	1	0	1
	98613 Acute myeloid leukemia, NOS	18	22	40
	98633 Chronic myeloid leukemia, NOS	11	8	19

TABLE VI : PATHOLOGY ACCORDING TO SITE (cont.)

		No. of Cases		
		MALE	FEMALE	TOTAL
98663	Acute promyelocytic leukemia, t(15;17)(q22;q11-12)	1	3	4
98673	Acute myelomonocytic leukemia, NOS	2	2	4
98723	Acute myeloid leukemia, minimal differentiation	0	1	1
98743	Acute myeloid leukemia with maturation	0	1	1
98753	Chronic myeloid leukemia, BCR/ABL positive	0	1	1
98953	Acute myeloid leukemia with myelodysplasia-related changes	1	1	2
99303	Myeloid sarcoma	0	1	1
99453	Chronic myelomonocytic leukemia, NOS	2	2	4
99503	Polycythemia vera	10	4	14
99613	Primary myelofibrosis	0	1	1
99753	Myeloproliferative neoplasm, unclassifiable	1	0	1
99833	Myelodysplastic syndrome with excess blasts	5	4	9
99893	Myelodysplastic syndrome, NOS	8	9	17
C44	MALIGNANT NEOPLASM OF SKIN	78	111	189
80103	Carcinoma, NOS	0	1	1
80513	Verrucous carcinoma, NOS	1	0	1
80703	Squamous cell carcinoma, NOS	26	19	45
80903	Basal cell carcinoma, NOS (C44._)	4	6	10
80913	Superficial basal cell carcinoma (C44._)	1	3	4
80923	Infiltrating basal cell carcinoma, NOS (C44._)	0	1	1
80973	Basal cell carcinoma, nodular (C44._)	18	44	62
81023	Trichilemmocarcinoma (C44._)	0	1	1
81403	Adenocarcinoma, NOS	0	0	0
82003	Adenoid cystic carcinoma	0	1	1
84073	Microcystic adnexal carcinoma (C44._)	0	1	1
84093	Porocarcinoma, NOS (C44._)	0	3	3
84103	Sebaceous carcinoma (C44._)	1	2	3
84803	Mucinous adenocarcinoma	1	0	1
84903	Signet ring cell carcinoma	1	0	1
87203	Malignant melanoma, NOS	8	5	13
87213	Nodular melanoma (C44._)	2	0	2
87433	Low cumulative sun damage melanoma (C44._)	1	0	1
87443	Acral melanoma (C44._)	3	12	15
87453	Desmoplastic melanoma, NOS (C44._)	0	1	1
88303	Malignant fibrous histiocyoma	0	1	1
91203	Hemangiosarcoma	1	0	1
91403	Kaposi sarcoma	1	0	1
96803	Diffuse large B-cell lymphoma, NOS	2	0	2
96903	Follicular lymphoma, NOS	0	2	2
96993	Marginal zone B-cell lymphoma, NOS	0	1	1
97003	Mycosis fungoides (C44._)	5	2	7
97023	Mature T-cell lymphoma, NOS	1	1	2
97083	Subcutaneous panniculitis-like T-cell lymphoma	0	2	2
97183	Primary cutaneous anaplastic large cell lymphoma (C44._)	0	1	1
97263	Primary cutaneous gamma-delta T-cell lymphoma (C44._)	0	1	1
97353	Plasmablastic lymphoma	1	0	1
C48	MALIGNANT NEOPLASM OF RETROPERITONIUM AND PERITONIUM	6	24	30
80003	Neoplasm, malignant (No histological proof)	0	1	1
80103	Carcinoma, NOS	0	2	2
80123	Large cell carcinoma, NOS	0	1	1
81403	Adenocarcinoma, NOS	0	8	8
83103	Clear cell adenocarcinoma, NOS	0	1	1
84613	High grade serous carcinoma (C56.9)	0	3	3

TABLE VI : PATHOLOGY ACCORDING TO SITE (cont.)

		No. of Cases		
		MALE	FEMALE	TOTAL
88053	Undifferentiated sarcoma	0	1	1
88583	Dedifferentiated liposarcoma	1	0	1
88903	Leiomyosarcoma, NOS	0	2	2
89103	Embryonal rhabdomyosarcoma, NOS	0	1	1
89363	Gastrointestinal stromal tumor	1	2	3
95003	Neuroblastoma, NOS	2	0	2
95403	Malignant peripheral nerve sheath tumor, NOS	1	0	1
96803	Diffuse large B-cell lymphoma, NOS	1	2	3
C49	MALIG NEOPLASM OF OTHER CONECTIVE TISSUE AND SOFT TISSUE	30	19	49
80003	Neoplasm, malignant (No histological proof)	0	1	1
82003	Adenoid cystic carcinoma	0	0	0
88003	Sarcoma, NOS	1	1	2
88023	Giant cell sarcoma	1	3	4
88043	Epithelioid sarcoma, NOS	2	0	2
88053	Undifferentiated sarcoma	1	0	1
88113	Myxofibrosarcoma	3	2	5
88143	Infantile fibrosarcoma	1	1	2
88303	Malignant fibrous histiocytoma	0	2	2
88513	Liposarcoma, well differentiated, NOS	4	1	5
88523	Myxoid liposarcoma	1	0	1
88543	Pleomorphic liposarcoma	0	1	1
88583	Dedifferentiated liposarcoma	1	1	2
88903	Leiomyosarcoma, NOS	1	1	2
89123	Spindle cell rhabdomyosarcoma	1	0	1
90403	Synovial sarcoma, NOS	1	0	1
90413	Synovial sarcoma, spindle cell	2	0	2
90443	Clear cell sarcoma, NOS	1	0	1
92313	Myxoid chondrosarcoma	1	0	1
93643	Ewing sarcoma	1	0	1
95403	Malignant peripheral nerve sheath tumor, NOS	2	2	4
95423	Malignant peripheral nerve sheath tumor, epithelioid	0	1	1
95803	Granular cell tumor, malignant	0	1	1
96803	Diffuse large B-cell lymphoma, NOS	2	1	3
97143	Anaplastic large cell lymphoma, T-cell and -cell type	1	0	1
97353	Plasmablastic lymphoma	1	0	1
97553	Histiocytic sarcoma	1	0	1
C50	MALIGNANT NEOPLASM OF BREAST	2	771	773
80003	Neoplasm, malignant (No histological proof)	0	5	5
80103	Carcinoma, NOS	0	1	1
80323	Spindle cell carcinoma, NOS	0	1	1
80413	Small cell carcinoma, NOS	0	1	1
80703	Squamous cell carcinoma, NOS	0	1	1
81403	Adenocarcinoma, NOS	0	1	1
82013	Cribriform carcinoma, NOS	0	1	1
82553	Adenocarcinoma with mixed subtypes	0	1	1
84803	Mucinous adenocarcinoma	0	5	5
85002	Intraductal carcinoma, noninfiltrating, NOS	0	99	99
85003	Infiltrating duct carcinoma, NOS (C50...)	2	565	567
85032	Noninfiltrating intraductal papillary adenocarcinoma (C50...)	0	2	2
85042	Encapsulated papillary carcinoma	0	2	2
85043	Encapsulated papillary carcinoma with invasion	0	4	4

TABLE VI : PATHOLOGY ACCORDING TO SITE (cont.)

		No. of Cases		TOTAL
		MALE	FEMALE	
85073	Invasive micropapillary carcinoma of breast (C50._)	0	2	2
85092	Solid papillary carcinoma in situ (C50._)	0	5	5
85093	Solid papillary carcinoma with invasion (C50._)	0	16	16
85202	Lobular carcinoma in situ, NOS (C50._)	0	8	8
85203	Lobular carcinoma, NOS (C50._)	0	27	27
85222	Intraductal carcinoma and lobular carcinoma in situ (C50._)	0	2	2
85223	Infiltrating duct and lobular carcinoma (C50._)	0	5	5
85233	Infiltrating duct mixed with other types of carcinoma (C50._)	0	5	5
85403	Paget disease, mammary (C50._)	0	1	1
85413	Paget disease and infiltrating duct carcinoma of breast (C50._)	0	1	1
85433	Paget disease and intraductal carcinoma of breast (C50._)	0	2	2
85753	Metaplastic carcinoma, NOS	0	2	2
91203	Hemangiosarcoma	0	1	1
95913	Malignant lymphoma, non-Hodgkin, NOS	0	1	1
96803	Diffuse large B-cell lymphoma, NOS	0	4	4
C51	MALIGNANT NEOPLASM OF VULVA	0	10	0
80703	Squamous cell carcinoma, NOS	0	6	6
80973	Basal cell carcinoma, nodular (C44._)	0	1	1
84023	Hidradenocarcinoma (C44._)	0	1	1
85423	Paget disease, extramammary	0	1	1
87453	Desmoplastic melanoma, NOS (C44._)	0	1	1
C52	MALIGNANT NEOPLASM OF VAGINA	0	13	13
80003	Neoplasm, malignant (No histological proof)	0	1	1
80703	Squamous cell carcinoma, NOS	0	5	5
81403	Adenocarcinoma, NOS	0	2	2
83233	Mixed cell adenocarcinoma	0	1	1
83803	Endometrioid adenocarcinoma, NOS	0	2	2
84413	Serous carcinoma, NOS	0	0	0
87203	Malignant melanoma, NOS	0	1	1
89303	Endometrial stromal sarcoma, NOS (C54.1)	0	1	1
C53	MALIGNANT NEOPLASM OF CERVIX	0	173	173
80003	Neoplasm, malignant (No histological proof)	0	5	5
80103	Carcinoma, NOS	0	3	3
80203	Carcinoma, undifferentiated, NOS	0	2	2
80413	Small cell carcinoma, NOS	0	2	2
80523	Papillary squamous cell carcinoma	0	2	2
80703	Squamous cell carcinoma, NOS	0	94	94
80713	Squamous cell carcinoma, keratinizing, NOS	0	3	3
80723	Squamous cell carcinoma, large cell, nonkeratinizing, NOS	0	15	15
80763	Squamous cell carcinoma, microinvasive	0	1	1
81403	Adenocarcinoma, NOS	0	34	34
82403	Neuroendocrine tumor, NOS	0	1	1
83103	Clear cell adenocarcinoma, NOS	0	1	1
83233	Mixed cell adenocarcinoma	0	1	1
84803	Mucinous adenocarcinoma	0	2	2
85603	Adenosquamous carcinoma	0	7	7
C54-C55	MALIGNANT NEOPLASM OF CORPUS UTERI AND UTERUS PART UNSPECIFIED	0	159	159
80103	Carcinoma, NOS	0	5	5
80413	Small cell carcinoma, NOS	0	2	2
81403	Adenocarcinoma, NOS	0	4	4
83103	Clear cell adenocarcinoma, NOS	0	6	6

TABLE VI : PATHOLOGY ACCORDING TO SITE (cont.)

		No. of Cases		
		MALE	FEMALE	TOTAL
83233	Mixed cell adenocarcinoma	0	15	15
83803	Endometrioid adenocarcinoma, NOS	0	100	100
84413	Serous carcinoma, NOS	0	8	8
84613	High grade serous carcinoma (C56.9)	0	5	5
85703	Adenocarcinoma with squamous metaplasia	0	2	2
88903	Leiomyosarcoma, NOS	0	3	3
89333	Adenosarcoma	0	1	1
89803	Carcinosarcoma, NOS	0	7	7
96803	Diffuse large B-cell lymphoma, NOS	0	1	1
C56	MALIGNANT NEOPLASM OF OVARY	0	98	98
80003	Neoplasm, malignant (No histological proof)	0	3	3
80103	Carcinoma, NOS	0	4	4
80703	Squamous cell carcinoma, NOS	0	3	3
81403	Adenocarcinoma, NOS	0	6	6
82403	Neuroendocrine tumor, NOS	0	1	1
83103	Clear cell adenocarcinoma, NOS	0	24	24
83233	Mixed cell adenocarcinoma	0	1	1
83803	Endometrioid adenocarcinoma, NOS	0	9	9
84413	Serous carcinoma, NOS	0	9	9
84613	High grade serous carcinoma (C56.9)	0	16	16
84721	Mucinous cystic tumor of borderline malignancy (C56.9)	0	3	3
84803	Mucinous adenocarcinoma	0	3	3
86203	Adult granulosa cell tumor of ovary (C56.9)	0	3	3
88053	Undifferentiated sarcoma	0	1	1
89333	Adenosarcoma	0	1	1
89803	Carcinosarcoma, NOS	0	1	1
90713	Yolk sac tumor, NOS	0	2	2
90803	Teratoma, malignant, NOS	0	4	4
90853	Mixed germ cell tumor	0	3	3
90903	Struma ovarii, malignant (C56.9)	0	1	1
C57	OTHER AND UNSPECIFIED FEMALE GENITAL ORGANS	0	10	10
83103	Clear cell adenocarcinoma, NOS	0	1	1
83803	Endometrioid adenocarcinoma, NOS	0	1	1
84413	Serous carcinoma, NOS	0	4	4
84613	High grade serous carcinoma (C56.9)	0	2	2
88903	Leiomyosarcoma, NOS	0	1	1
96803	Diffuse large B-cell lymphoma, NOS	0	1	1
C58	MALIGNANT NEOPLASM OF PLACENTA	0	2	2
91003	Choriocarcinoma, NOS	0	2	2
C60	MALIGNANT NEOPLASM OF PENIS	5	0	5
80103	Carcinoma, NOS	1	0	1
80543	Warty carcinoma	1	0	1
80703	Squamous cell carcinoma, NOS	3	0	3
C61	MALIGNANT NEOPLASM OF PROSTATE	403	0	403
80003	Neoplasm, malignant (No histological proof)	9	0	9
80103	Carcinoma, NOS	3	0	3
81303	Papillary urothelial carcinoma (C67...)	2	0	2
81403	Adenocarcinoma, NOS	369	0	369
84803	Mucinous adenocarcinoma	1	0	1
85003	Infiltrating duct carcinoma, NOS (C50...)	19	0	19

TABLE VI : PATHOLOGY ACCORDING TO SITE (cont.)

		No. of Cases		TOTAL
		MALE	FEMALE	
C62	MALIGNANT NEOPLASM OF TESTIS	6	0	6
	90613 Seminoma, NOS (C62._)	2	0	2
	90643 Germinoma	1	0	1
	90713 Yolk sac tumor, NOS	2	0	2
	96733 Mantle cell lymphoma	1	0	1
C63	MALIGNANT NEOPLASM OF OTHER AND UNSPECIFIED MALE GENITAL ORGAN	3	0	3
	80703 Squamous cell carcinoma, NOS	2	0	2
	80973 Basal cell carcinoma, nodular (C44._)	1	0	1
C64	MALIGNANT NEOPLASM OF KIDNEY	57	28	85
	80003 Neoplasm, malignant (No histological proof)	1	0	1
	80103 Carcinoma, NOS	0	1	1
	81203 Transitional cell carcinoma, NOS	2	0	2
	81303 Papillary urothelial carcinoma (C67._)	1	2	3
	82603 Papillary adenocarcinoma, NOS	6	3	9
	83103 Clear cell adenocarcinoma, NOS	41	14	55
	83123 Renal cell carcinoma, NOS (C64.9)	2	1	3
	83163 Cyst-associated renal cell carcinoma (C64.9)	1	0	1
	83173 Renal cell carcinoma, chromophobe type (C64.9)	1	3	4
	83233 Mixed cell adenocarcinoma	1	1	2
	88513 Liposarcoma, well differentiated, NOS	1	0	1
	88903 Leiomyosarcoma, NOS	0	1	1
	89603 Nephroblastoma, NOS (C64.9)	0	1	1
	89633 Rhabdoid tumor, NOS	0	1	1
C65	MALIGNANT NEOPLASM OF RENAL PELVIS	11	6	17
	80703 Squamous cell carcinoma, NOS	1	0	1
	81203 Transitional cell carcinoma, NOS	2	2	4
	81303 Papillary urothelial carcinoma (C67._)	7	4	11
	96803 Diffuse large B-cell lymphoma, NOS	1	0	1
C66	MALIGNANT NEOPLASM OF URETER	9	3	12
	81203 Transitional cell carcinoma, NOS	5	0	5
	81303 Papillary urothelial carcinoma (C67._)	4	3	7
C67-C68	MALIGNANT NEOPLASM OF BLADDER AND OF OTHER AND UNSPECIFIED PART OF URINARY ORGANS	83	28	111
	80003 Neoplasm, malignant (No histological proof)	1	1	2
	80413 Small cell carcinoma, NOS	2	0	2
	80453 Combined small cell carcinoma	1	0	1
	81203 Transitional cell carcinoma, NOS	27	7	34
	81303 Papillary urothelial carcinoma (C67._)	49	17	66
	81313 Urothelial carcinoma, micropapillary (C67._)	3	1	4
	83103 Clear cell adenocarcinoma, NOS	0	1	1
	95913 Malignant lymphoma, non-Hodgkin, NOS	0	1	1
C69	MALIGNANT NEOPLASM OF EYE AND ADNEXA	12	8	20
	80103 Carcinoma, NOS	0	1	1
	80703 Squamous cell carcinoma, NOS	1	0	1
	82003 Adenoid cystic carcinoma	1	3	4
	84303 Mucoepidermoid carcinoma	1	0	1
	87203 Malignant melanoma, NOS	1	0	1
	95103 Retinoblastoma, NOS (C69.2)	4	0	4
	95113 Retinoblastoma, differentiated (C69.2)	2	0	2

TABLE VI : PATHOLOGY ACCORDING TO SITE (cont.)

		No. of Cases			
		MALE	FEMALE	TOTAL	
	96803	Diffuse large B-cell lymphoma, NOS	0	2	2
	96993	Marginal zone B-cell lymphoma, NOS	2	2	4
C71	MALIGNANT NEOPLASM OF BRAIN	43	36	79	
	80003	Neoplasm, malignant (No histological proof)	0	3	3
	87203	Malignant melanoma, NOS	0	1	1
	90643	Germinoma	1	1	2
	90853	Mixed germ cell tumor	0	1	1
	93803	Glioma, malignant (C71._)	8	6	14
	93823	Oligoastrocytoma, NOS (C71._)	1	0	1
	93853	Diffuse midline glioma, H3 K27M-mutant (C71._)	1	0	1
	93913	Ependymoma, NOS (C71._)	0	1	1
	93923	Ependymoma, anaplastic (C71._)	0	1	1
	94003	Astrocytoma, NOS (C71._)	4	3	7
	94013	Astrocytoma, anaplastic, NOS (C71._)	3	0	3
	94403	Glioblastoma, NOS (C71._)	17	9	26
	94503	Oligodendroglioma, NOS (C71._)	0	2	2
	94703	Medulloblastoma, NOS (C71.6)	1	1	2
	94733	CNS embryonal tumor, NOS	0	1	1
	95083	Atypical teratoid/rhabdoid tumor (C71._)	1	1	2
	95303	Meningioma, malignant	0	2	2
	95913	Malignant lymphoma, non-Hodgkin, NOS	1	0	1
	96803	Diffuse large B-cell lymphoma, NOS	4	3	7
	97143	Anaplastic large cell lymphoma, T-cell and -cell type	1	0	1
C72	MALIGNANT NEOPLASM OF SPINAL CORD, CRANIAL	5	1	6	
	80003	Neoplasm, malignant (No histological proof)	1	0	1
	95003	Neuroblastoma, NOS	1	0	1
	96803	Diffuse large B-cell lymphoma, NOS	3	1	4
C73	MALIGNANT NEOPLASM OF THYROID	53	186	239	
	80003	Neoplasm, malignant (No histological proof)	0	1	1
	80103	Carcinoma, NOS	0	2	2
	80213	Carcinoma, anaplastic, NOS	4	5	9
	80223	Pleomorphic carcinoma	1	0	1
	82603	Papillary adenocarcinoma, NOS	30	119	149
	82903	Oxyphilic adenocarcinoma	2	2	4
	83303	Follicular carcinoma, NOS (C73.9)	4	6	10
	83353	Follicular carcinoma, minimally invasive (C73.9)	0	4	4
	83393	Follicular carcinoma, encapsulated, angioinvasive (C73.9)	2	1	3
	83403	Papillary carcinoma, follicular variant (C73.9)	4	20	24
	83413	Papillary microcarcinoma (C73.9)	3	16	19
	83423	Papillary carcinoma, oncocytic variant (C73.9)	1	1	2
	83433	Papillary carcinoma, encapsulated, of thyroid (C73.9)	1	6	7
	83443	Papillary carcinoma, columnar cell (C73.9)	0	1	1
	83453	Medullary thyroid carcinoma (C73.9)	1	0	1
	83473	Mixed medullary-papillary carcinoma (C73.9)	0	1	1
	96803	Diffuse large B-cell lymphoma, NOS	0	1	1
C74	MALIGNANT NEOPLASM OF ADRENAL GLAND	4	5	9	
	83703	Adrenal cortical carcinoma (C74.0)	1	0	1
	87003	Pheochromocytoma, NOS (C74.1)	0	3	3
	88903	Leiomyosarcoma, NOS	0	1	1
	94903	Ganglioneuroblastoma	0	1	1
	95003	Neuroblastoma, NOS	3	0	3

TABLE VI : PATHOLOGY ACCORDING TO SITE (cont.)

		No. of Cases		TOTAL
		MALE	FEMALE	
C75	MALIGNANT NEOPLASM OF OTHER ENDOCRINE GLANDS AND RELATA	1	2	3
	81403 Adenocarcinoma, NOS	0	1	1
	90853 Mixed germ cell tumor	1	0	1
	93623 Pineoblastoma (C75.3)	0	1	1
C76,C80	MALIGNANT NEOPLASM WITHOUT SPECIFIED SITE AND METASTATIC MALIGNANCY IN VARIOUS SITES	28	37	65
	80003 Neoplasm, malignant (No histological proof)	4	9	13
	80103 Carcinoma, NOS	9	6	15
	80123 Large cell carcinoma, NOS	1	0	1
	80703 Squamous cell carcinoma, NOS	6	1	7
	80823 Lymphoepithelial carcinoma	0	1	1
	81403 Adenocarcinoma, NOS	5	16	21
	83103 Clear cell adenocarcinoma, NOS	1	1	2
	84803 Mucinous adenocarcinoma	0	1	1
	88013 Spindle cell sarcoma	0	1	1
	95003 Neuroblastoma, NOS	1	0	1
	96803 Diffuse large B-cell lymphoma, NOS	1	1	2
C77	MALIGNANT LYMPHOMAS	57	47	104
	80003 Neoplasm, malignant (No histological proof)	0	0	0
	80103 Carcinoma, NOS	0	0	0
	81403 Adenocarcinoma, NOS	0	0	0
	95913 Malignant lymphoma, non-Hodgkin, NOS	1	1	2
	96503 Hodgkin lymphoma, NOS	2	2	4
	96523 Hodgkin lymphoma, mixed cellularity, NOS	2	1	3
	96593 Hodgkin lymphoma, nodular lymphocyte predominant	0	1	1
	96633 Hodgkin lymphoma, nodular sclerosis, NOS	6	7	13
	96733 Mantle cell lymphoma	4	1	5
	96803 Diffuse large B-cell lymphoma, NOS	32	27	59
	96873 Burkitt lymphoma, NOS	1	0	1
	96903 Follicular lymphoma, NOS	3	2	5
	96953 Follicular lymphoma, grade 1	1	0	1
	96983 Follicular lymphoma, grade 3	2	0	2
	96993 Marginal zone B-cell lymphoma, NOS	0	2	2
	97023 Mature T-cell lymphoma, NOS	0	1	1
	97143 Anaplastic large cell lymphoma, T-cell and -cell type	1	0	1
	97153 Anaplastic large cell lymphoma, ALK negative	1	0	1
	98233 B-cell chronic lymphocytic leukemia/small lymphocytic lymphoc	0	2	2
	99303 Myeloid sarcoma	1	0	1
Z850	PERSONAL HISTORY OF MALIGNANT NEOPLASM OF DIGESTIVE ORGANS	2	2	4
	80003 Adenocarcinoma, NOS	1	1	2
	80003 Neoplasm, malignant (No histological proof)	1	1	2
Z851	PERSONAL HISTORY OF MALIGNANT NEOPLASM OF TRACHEA, BRONCHUS AND LUNG	1	1	2
	80003 Adenocarcinoma, NOS	1	1	2
Z853	PERSONAL HISTORY OF MALIGNANT NEOPLASM OF BREAST	0	4	4
	80003 Neoplasm, malignant (No histological proof)	0	4	4
Z854	PERSONAL HISTORY OF MALIGNANT NEOPLASM OF GENITAL ORGANS	1	0	1
	80003 Neoplasm, malignant (No histological proof)	1	0	1

TABLE VI : PATHOLOGY ACCORDING TO SITE (cont.)

		No. of Cases		TOTAL
		MALE	FEMALE	
Z855	PERSONAL HISTORY OF MALIGNANT NEOPLASM OF URINARY TRACT	1	0	1
	80003 Neoplasm, malignant (No histological proof)	1	0	1
Z858	PERSONAL HISTORY OF MALIGNANT NEOPLASM OF OTHER ORGANS AND SYSTEMS	1	0	1
	80003 Osteosarcoma, NOS (C40._, C41._)	1	0	1

TABLE VII: PRIMARY SITE IN CHILDHOOD BY AGE GROUP

CODE		No. of cases								
		No. of cases			0 - 4		5 - 10		10 - 15	
		TOTAL	M	F	M	F	M	F	M	F
TOTAL		74	43	31	21	10	12	10	10	11
C22-C25	LIVER	4	1	3	1	1	0	1	0	1
C38	HEART, MEDIASTINUM, AND PLEURA	1	1	0	0	0	1	0	0	0
C40-C41, C49	BONE	11	8	3	3	1	1	0	4	2
C42	HEMATOPOIETIC	21	11	10	4	4	6	4	1	2
C44	SKIN	2	2	0	0	0	0	0	2	0
C48	RETROPERITONEUM AND PERITONEUM	4	3	1	2	0	0	1	1	0
C56	OVARY	1	0	1	0	0	0	0	0	1
C64-C68	URO	2	0	2	0	2	0	0	0	0
C69	EYE	6	6	0	5	0	1	0	0	0
C70-C72	NEURO	14	4	10	3	2	1	3	0	5
C73-C75	THYROID	5	4	1	2	0	1	1	1	0
C76	OTHER AND ILL-DEFINED PRIMARY SITE	1	1	0	0	0	1	0	0	0
C77	LYMPH NODES	2	2	0	1	0	0	0	1	0

TABLE VIII : LYMPHOMA PATHOLOGY ACCORDING TO SITE

CODE	SITE	No. of Cases		
		MALE	FEMALE	TOTAL
	NODAL LYMPHOMA AND EXTRANODAL LYMPHOMA	135	115	250
	NODAL LYMPHOMA	56	45	101
C770	Lymph Nodes: HeadFaceNeck	33	26	59
	95913 Malignant lymphoma, non-Hodgkin, NOS	1	0	1
	96503 Hodgkin lymphoma, NOS	2	1	3
	96523 Hodgkin lymphoma, mixed cellularity, NOS	2	1	3
	96593 Hodgkin lymphoma, nodular lymphocyte predominant	0	1	1
	96633 Hodgkin lymphoma, nodular sclerosis, NOS	5	6	11
	96733 Mantle cell lymphoma	2	1	3
	96803 Diffuse large B-cell lymphoma, NOS	14	11	25
	96903 Follicular lymphoma, NOS	2	2	4
	96953 Follicular lymphoma, grade 1	1	0	1
	96983 Follicular lymphoma, grade 3	2	0	2
	96993 Marginal zone B-cell lymphoma, NOS	0	2	2
	97023 Mature T-cell lymphoma, NOS	0	1	1
	97143 Anaplastic large cell lymphoma, T-cell and -cell type	1	0	1
	97153 Anaplastic large cell lymphoma, ALK negative	1	0	1
C771	Intrathoracic Lymph Nodes	3	0	3
	96803 Diffuse large B-cell lymphoma, NOS	3	0	3
C772	Intra-abdominal LymphNodes	4	9	13
	95913 Malignant lymphoma, non-Hodgkin, NOS	0	1	1
	96733 Mantle cell lymphoma	1	0	1
	96803 Diffuse large B-cell lymphoma, NOS	2	8	10
	96873 Burkitt lymphoma, NOS	1	0	1
C773	Lymph Nodes of axilla or arm	2	2	4
	96633 Hodgkin lymphoma, nodular sclerosis, NOS	1	0	1
	96803 Diffuse large B-cell lymphoma, NOS	1	2	3
C774	Lymph Nodes: Leg	11	6	17
	96633 Hodgkin lymphoma, nodular sclerosis, NOS	0	1	1
	96733 Mantle cell lymphoma	1	0	1
	96803 Diffuse large B-cell lymphoma, NOS	9	5	14
	96903 Follicular lymphoma, NOS	1	0	1
C775	Pelvic Lymph Nodes	2	0	2
	96803 Diffuse large B-cell lymphoma, NOS	2	0	2
C779	Lymph Node NOS	1	2	3
	96503 Hodgkin lymphoma, NOS	0	1	1
	96803 Diffuse large B-cell lymphoma, NOS	1	1	2

TABLE VIII : LYMPHOMA PATHOLOGY ACCORDING TO SITE (cont.)

CODE	SITE	No. of Cases		
		MALE	FEMALE	TOTAL
	EXTRANODAL LYMPHOMA	79	70	149
C019	Tongue: Base NOS	3	0	3
	96803 Diffuse large B-cell lymphoma, NOS	3	0	3
C031	Gum: Lower	1	0	1
	96873 Burkitt lymphoma, NOS	1	0	1
C050	Hard Palate	0	1	1
	96803 Diffuse large B-cell lymphoma, NOS	0	1	1
C099	Tonsil NOS	2	2	4
	96733 Mantle cell lymphoma	1	0	1
	96803 Diffuse large B-cell lymphoma, NOS	1	1	2
	96903 Follicular lymphoma, NOS	0	1	1
C113	Nasopharynx: Anterior Wall	0	1	1
	96803 Diffuse large B-cell lymphoma, NOS	0	1	1
C119	Nasopharynx NOS	3	0	3
	96803 Diffuse large B-cell lymphoma, NOS	3	0	3
C162	Stomach: Body	2	1	3
	96803 Diffuse large B-cell lymphoma, NOS	2	1	3
C168	Stomach: Overlapping	0	1	1
	96803 Diffuse large B-cell lymphoma, NOS	0	1	1
C169	Stomach, NOS	3	6	9
	96803 Diffuse large B-cell lymphoma, NOS	2	4	6
	96993 Marginal zone B-cell lymphoma, NOS	1	1	2
	97023 Mature T-cell lymphoma, NOS	0	1	1
C170	Duodenum	1	1	2
	96803 Diffuse large B-cell lymphoma, NOS	1	0	1
	96873 Burkitt lymphoma, NOS	0	1	1
C171	Jejunum	1	0	1
	96803 Diffuse large B-cell lymphoma, NOS	1	0	1
C179	Small Intestine, NOS	1	0	1
	96803 Diffuse large B-cell lymphoma, NOS	1	0	1
C180	Colon: Caecum	0	1	1
	96993 Marginal zone B-cell lymphoma, NOS	0	1	1
C181	Colon: Appendix	1	0	1
	96803 Diffuse large B-cell lymphoma, NOS	1	0	1
C186	Colon: Descending	1	0	1
	96873 Burkitt lymphoma, NOS	1	0	1

TABLE VIII : LYMPHOMA PATHOLOGY ACCORDING TO SITE (cont.)

CODE	SITE	No. of Cases		
		MALE	FEMALE	TOTAL
C187	Colon: Sigmoid	0	1	1
	96803 Diffuse large B-cell lymphoma, NOS	0	1	1
C189	Colon NOS	1	0	1
	96803 Diffuse large B-cell lymphoma, NOS	1	0	1
C199	Rectosigmoid Junction	1	0	1
	95903 Malignant lymphoma, NOS	1	0	1
C209	Rectum NOS	1	0	1
	96803 Diffuse large B-cell lymphoma, NOS	1	0	1
C220	Liver	1	0	1
	96803 Diffuse large B-cell lymphoma, NOS	1	0	1
C250	Pancreas: Head	1	0	1
	96803 Diffuse large B-cell lymphoma, NOS	1	0	1
C300	Nasal Cavity	1	2	3
	96803 Diffuse large B-cell lymphoma, NOS	1	1	2
	97193 NK/T-cell lymphoma, nasal and nasal type	0	1	1
C310	Maxillary Sinus	0	1	1
	96803 Diffuse large B-cell lymphoma, NOS	0	1	1
C311	Ethmoid Sinus	1	0	1
	96803 Diffuse large B-cell lymphoma, NOS	1	0	1
C341	Lung: Upper Lobe	1	0	1
	96803 Diffuse large B-cell lymphoma, NOS	1	0	1
C342	Lung: Middle Lobe	0	1	1
	96993 Marginal zone B-cell lymphoma, NOS	0	1	1
C343	Lung: Lower Lobe	0	1	1
	96993 Marginal zone B-cell lymphoma, NOS	0	1	1
C349	Lung NOS	0	1	1
	96993 Marginal zone B-cell lymphoma, NOS	0	1	1
C381	Mediastinum: Anterior	5	2	7
	96633 Hodgkin lymphoma, nodular sclerosis, NOS	1	0	1
	96793 Mediastinal large B-cell lymphoma (C38.3)	0	1	1
	96803 Diffuse large B-cell lymphoma, NOS	3	1	4
	97023 Mature T-cell lymphoma, NOS	1	0	1

TABLE VIII : LYMPHOMA PATHOLOGY ACCORDING TO SITE (cont.)

CODE	SITE	No. of Cases		
		MALE	FEMALE	TOTAL
C383	Mediastinum NOS	0	2	2
	95913 Malignant lymphoma, non-Hodgkin, NOS	0	1	1
	96793 Mediastinal large B-cell lymphoma (C38.3)	0	1	1
C384	Pleura NOS	2	0	2
	96803 Diffuse large B-cell lymphoma, NOS	2	0	2
C402	Bone: Lower Long	0	1	1
	96803 Diffuse large B-cell lymphoma, NOS	0	1	1
C412	Bone: Vertebral Column	3	1	4
	96803 Diffuse large B-cell lymphoma, NOS	3	1	4
C413	Bone: Rib, Sterum, Clavicle	0	1	1
	96803 Diffuse large B-cell lymphoma, NOS	0	1	1
C414	Bone: Pelvic, Sacrum, Coccyx	1	0	1
	96803 Diffuse large B-cell lymphoma, NOS	1	0	1
C421	Bone Marrow	14	9	23
	96713 Lymphoplasmacytic lymphoma	1	0	1
	96733 Mantle cell lymphoma	1	0	1
	96803 Diffuse large B-cell lymphoma, NOS	1	2	3
	96873 Burkitt lymphoma, NOS	3	2	5
	96903 Follicular lymphoma, NOS	1	1	2
	96993 Marginal zone B-cell lymphoma, NOS	2	2	4
	97023 Mature T-cell lymphoma, NOS	4	1	5
	97143 Anaplastic large cell lymphoma, T-cell and -cell type	1	1	2
C422	Spleen	1	2	3
	96803 Diffuse large B-cell lymphoma, NOS	0	1	1
	96893 Splenic marginal zone B-cell lymphoma (C42.2)	1	1	2
C440	Skin of lip, NOS	0	1	1
	97263 Primary cutaneous gamma-delta T-cell lymphoma (C44._)	0	1	1
C441	Eyelid	1	1	2
	96803 Diffuse large B-cell lymphoma, NOS	1	0	1
	96993 Marginal zone B-cell lymphoma, NOS	0	1	1
C442	External Ear	0	1	1
	97023 Mature T-cell lymphoma, NOS	0	1	1

TABLE VIII : LYMPHOMA PATHOLOGY ACCORDING TO SITE (cont.)

CODE	SITE	No. of Cases		
		MALE	FEMALE	TOTAL
C443	Skin: Cheek ChinFaceForehead	1	2	3
	96803 Diffuse large B-cell lymphoma, NOS	1	0	1
	97003 Mycosis fungoides (C44._)	0	1	1
	97083 Subcutaneous panniculitis-like T-cell lymphoma	0	1	1
C445	Skin of Trunk	3	0	3
	97003 Mycosis fungoides (C44._)	3	0	3
C446	Skin of upper limb & shoulder	0	3	3
	96903 Follicular lymphoma, NOS	0	1	1
	97003 Mycosis fungoides (C44._)	0	1	1
	97183 Primary cutaneous anaplastic large cell lymphoma (C44._)	0	1	1
C447	Skin of lower limb and hip	3	2	5
	96903 Follicular lymphoma, NOS	0	1	1
	97003 Mycosis fungoides (C44._)	2	0	2
	97023 Mature T-cell lymphoma, NOS	1	0	1
	97083 Subcutaneous panniculitis-like T-cell lymphoma	0	1	1
C480	Retroperitoneum	0	2	2
	96803 Diffuse large B-cell lymphoma, NOS	0	2	2
C481	Peritoneum: Specified pts	1	0	1
	96803 Diffuse large B-cell lymphoma, NOS	1	0	1
C491	Upper Limb NOS	1	0	1
	97143 Anaplastic large cell lymphoma, T-cell and -cell type	1	0	1
C493	Connective: Thorax	1	0	1
	96803 Diffuse large B-cell lymphoma, NOS	1	0	1
C494	Connective: Abdomen	1	1	2
	96803 Diffuse large B-cell lymphoma, NOS	1	1	2
C502	Upper-inner quadrant breast	0	1	1
	96803 Diffuse large B-cell lymphoma, NOS	0	1	1
C504	Upper-outer quadrant breast	0	2	2
	96803 Diffuse large B-cell lymphoma, NOS	0	2	2
C509	Breast NOS	0	2	2
	95913 Malignant lymphoma, non-Hodgkin, NOS	0	1	1
	96803 Diffuse large B-cell lymphoma, NOS	0	1	1
C559	Uterus NOS	0	1	1
	96803 Diffuse large B-cell lymphoma, NOS	0	1	1

TABLE VIII : LYMPHOMA PATHOLOGY ACCORDING TO SITE (cont.)

CODE	SITE	No. of Cases		
		MALE	FEMALE	TOTAL
C574	Uterine adnexa	0	1	1
	96803 Diffuse large B-cell lymphoma, NOS	0	1	1
C629	Testis NOS	1	0	1
	96733 Mantle cell lymphoma	1	0	1
C659	Renal pelvis	1	0	1
	96803 Diffuse large B-cell lymphoma, NOS	1	0	1
C679	Bladder NOS	0	1	1
	95913 Malignant lymphoma, non-Hodgkin, NOS	0	1	1
C690	Conjunctiva	0	1	1
	96993 Marginal zone B-cell lymphoma, NOS	0	1	1
C692	Retina	0	1	1
	96803 Diffuse large B-cell lymphoma, NOS	0	1	1
C696	Orbit NOS	2	1	3
	96993 Marginal zone B-cell lymphoma, NOS	2	1	3
C699	Eye NOS	0	1	1
	96803 Diffuse large B-cell lymphoma, NOS	0	1	1
C711	Frontal Lobe	1	1	2
	96803 Diffuse large B-cell lymphoma, NOS	1	1	2
C712	Temporal Lobe	2	0	2
	95913 Malignant lymphoma, non-Hodgkin, NOS	1	0	1
	97143 Anaplastic large cell lymphoma, T-cell and -cell type	1	0	1
C716	Cerebellum NOS	0	1	1
	96803 Diffuse large B-cell lymphoma, NOS	0	1	1
C718	Brain: Overlap	0	1	1
	96803 Diffuse large B-cell lymphoma, NOS	0	1	1
C719	Brain NOS	3	0	3
	96803 Diffuse large B-cell lymphoma, NOS	3	0	3
C720	Spinal Cord	2	0	2
	96803 Diffuse large B-cell lymphoma, NOS	2	0	2
C723	Optic Nerve	0	1	1
	96803 Diffuse large B-cell lymphoma, NOS	0	1	1

TABLE VIII : LYMPHOMA PATHOLOGY ACCORDING TO SITE (cont.)

CODE	SITE	No. of Cases		
		MALE	FEMALE	TOTAL
C729	Nervous System NOS	1	0	1
	96803 Diffuse large B-cell lymphoma, NOS	1	0	1
C739	Thyroid Gland	0	1	1
	96803 Diffuse large B-cell lymphoma, NOS	0	1	1
C762	Abdomen NOS	1	1	2
	96803 Diffuse large B-cell lymphoma, NOS	1	1	2

TABLE IX : MALIGNANT LYMPHOMA BY PATHOLOGY

CODE	SITE	No. of Cases		
		MALE	FEMALE	TOTAL
	GRAND TOTAL	135	115	250
MALIGNANT LYMPHOMA, NOS OR DIFFUSE		1	0	1
95903	Malignant lymphoma, NOS	1	0	1
HODGKINS DISEASE		11	11	22
96503	Hodgkin lymphoma, NOS	2	2	4
96523	Hodgkin lymphoma, mixed cellularity, NOS	2	1	3
96593	Hodgkin lymphoma, nodular lymphocyte predominant	0	1	1
96633	Hodgkin lymphoma, nodular sclerosis, NOS	7	7	14
NON-HODGKINS DISEASE		123	104	227
95913	Malignant lymphoma, non-Hodgkin, NOS	2	4	6
96713	Lymphoplasmacytic lymphoma	1	0	1
96733	Mantle cell lymphoma	7	1	8
96793	Mediastinal large B-cell lymphoma (C38.3)	0	2	2
96803	Diffuse large B-cell lymphoma, NOS	78	63	141
96873	Burkitt lymphoma, NOS	6	3	9
96893	Splenic marginal zone B-cell lymphoma (C42.2)	1	1	2
96903	Follicular lymphoma, NOS	4	6	10
96953	Follicular lymphoma, grade 1	1	0	1
96983	Follicular lymphoma, grade 3	2	0	2
96993	Marginal zone B-cell lymphoma, NOS	5	12	17
97003	Mycosis fungoides (C44._)	5	2	7
97023	Mature T-cell lymphoma, NOS	6	4	10
97083	Subcutaneous panniculitis-like T-cell lymphoma	0	2	2
97143	Anaplastic large cell lymphoma, T-cell and -cell type	4	1	5
97153	Anaplastic large cell lymphoma, ALK negative	1	0	1
97183	Primary cutaneous anaplastic large cell lymphoma (C44._)	0	1	1
97193	NK/T-cell lymphoma, nasal and nasal type	0	1	1
97263	Primary cutaneous gamma-delta T-cell lymphoma (C44._)	0	1	1

TABLE X : LYMPHOMA INCIDENCE BY AGE GROUP

AGE	MALE		FEMALE		TOTAL	
	n	%	n	%	n	%
ALL AGE GROUP	135	100.00	115	100.00	250	100.00
1+	2	1.48	1	0.87	3	1.20
5+	1	0.74	0	0.00	1	0.40
10+	4	2.96	0	0.00	4	1.60
15+	5	3.70	4	3.48	9	3.60
20+	5	3.70	4	3.48	9	3.60
25+	4	2.96	6	5.22	10	4.00
30+	5	3.70	3	2.61	8	3.20
35+	3	2.22	7	6.09	10	4.00
40+	4	2.96	6	5.22	10	4.00
45+	11	8.15	2	1.74	13	5.20
50+	8	5.93	5	4.35	13	5.20
55+	12	8.89	10	8.70	22	8.80
60+	20	14.81	14	12.17	34	13.60
65+	15	11.11	16	13.91	31	12.40
70+	10	7.41	14	12.17	24	9.60
75+	19	14.07	9	7.83	28	11.20
80+	3	2.22	9	7.83	12	4.80
85+	2	1.48	2	1.74	4	1.60
90+	2	1.48	2	1.74	4	1.60
95+	0	0.00	1	0.87	1	0.40

FIGURE X.I : LYMPHOMA INCIDENCE BY AGE GROUP

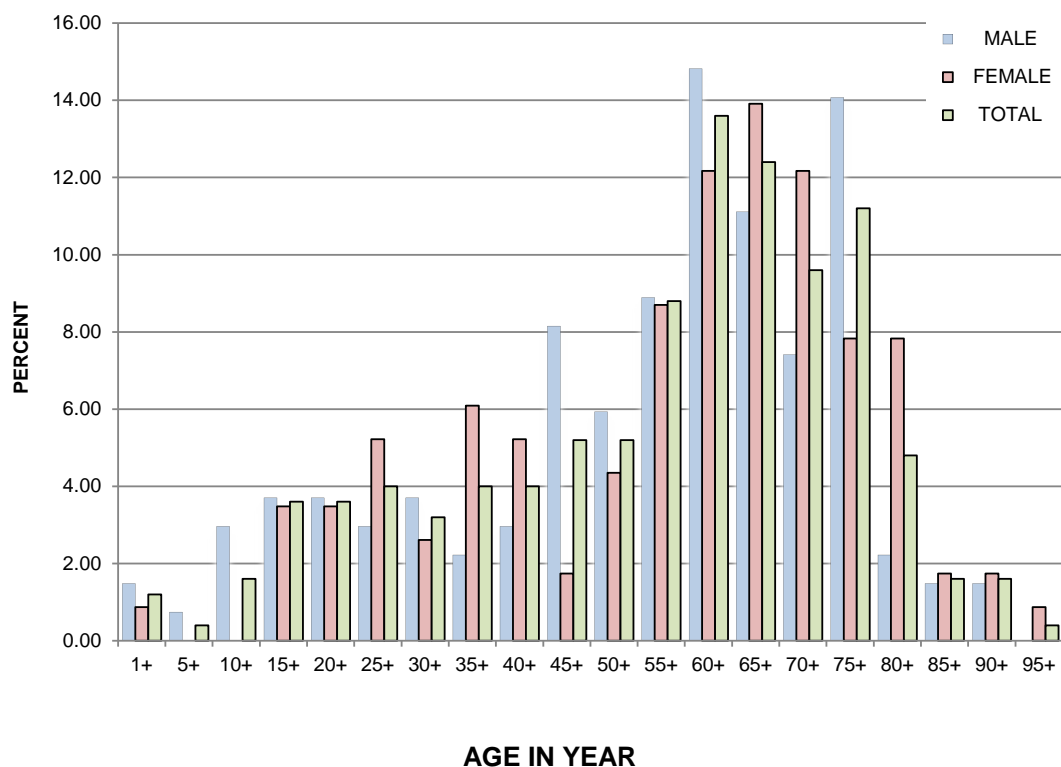


TABLE XI : LEADING CANCER

SITE	MALE	FEMALE	TOTAL	%
ALL SITES	2,412	2,747	5,159	100.00
BREAST	2	771	773	14.98
LUNG	315	223	538	10.43
LOWER GI	252	197	449	8.70
LIVER	318	124	442	8.57
PROSTATE	403	0	403	7.81
HEMATOPOIETIC	133	119	252	4.88
THYROID	58	193	251	4.87
URO	160	65	225	4.36
ORAL CAVITY	157	61	218	4.23
GYNE	0	194	194	3.76

FIGURE XI.I : LEADING CANCER

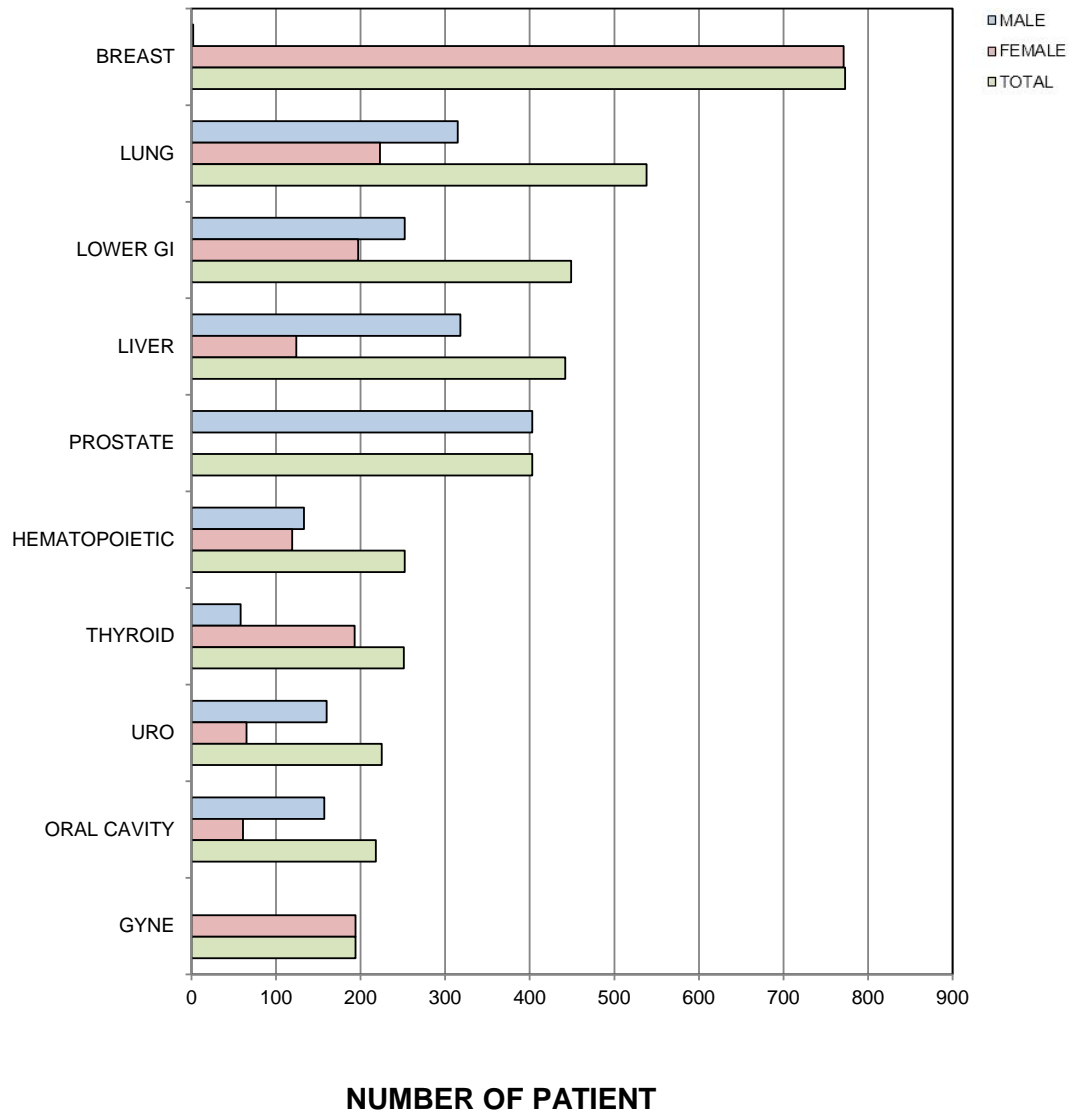


TABLE XII : LEADING CANCER IN MALE

SITE	MALE	%
ALL SITES	2,412	100.00
PROSTATE	403	16.71
LIVER	318	13.18
LUNG	315	13.06
LOWER GI	252	10.45
URO	160	6.63
ORAL CAVITY	157	6.51
HEMATOPOIETIC	133	5.51
UPPER GI	122	5.06
EAR, NOSE, THROAT	101	4.19
SKIN	78	3.23

FIGURE XII.I : LEADING CANCER IN MALE

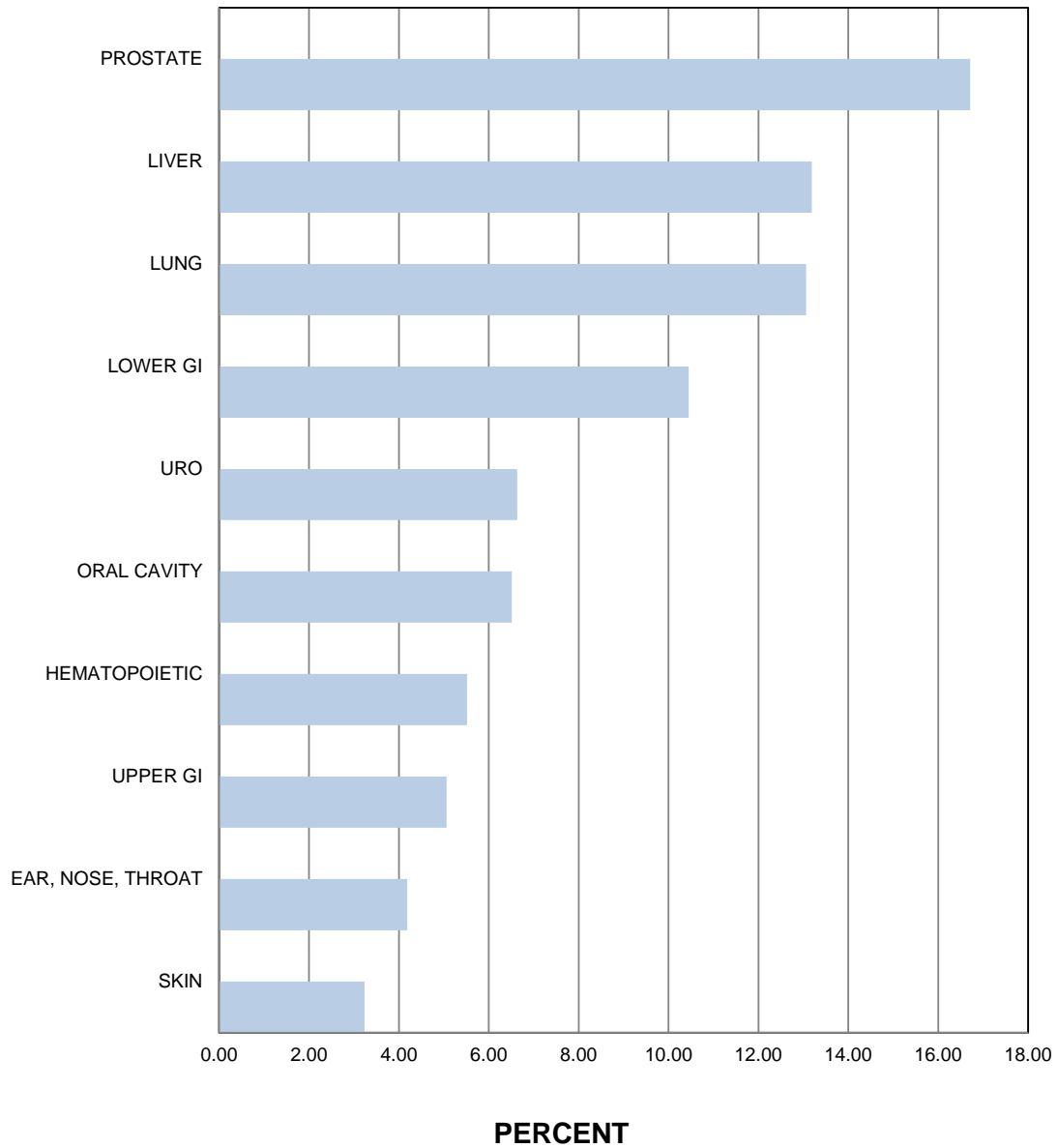


TABLE XIII : LEADING CANCER IN FEMALE

SITE	FEMALE	%
ALL SITES	2,747	100.00
BREAST	771	28.07
LUNG	223	8.12
GYNE	194	7.06
LOWER GI	197	7.17
THYROID	193	7.03
CERVIX	173	6.30
LIVER	124	4.51
HEMATOPOIETIC	119	4.33
SKIN	111	4.04
OVARY	98	3.57

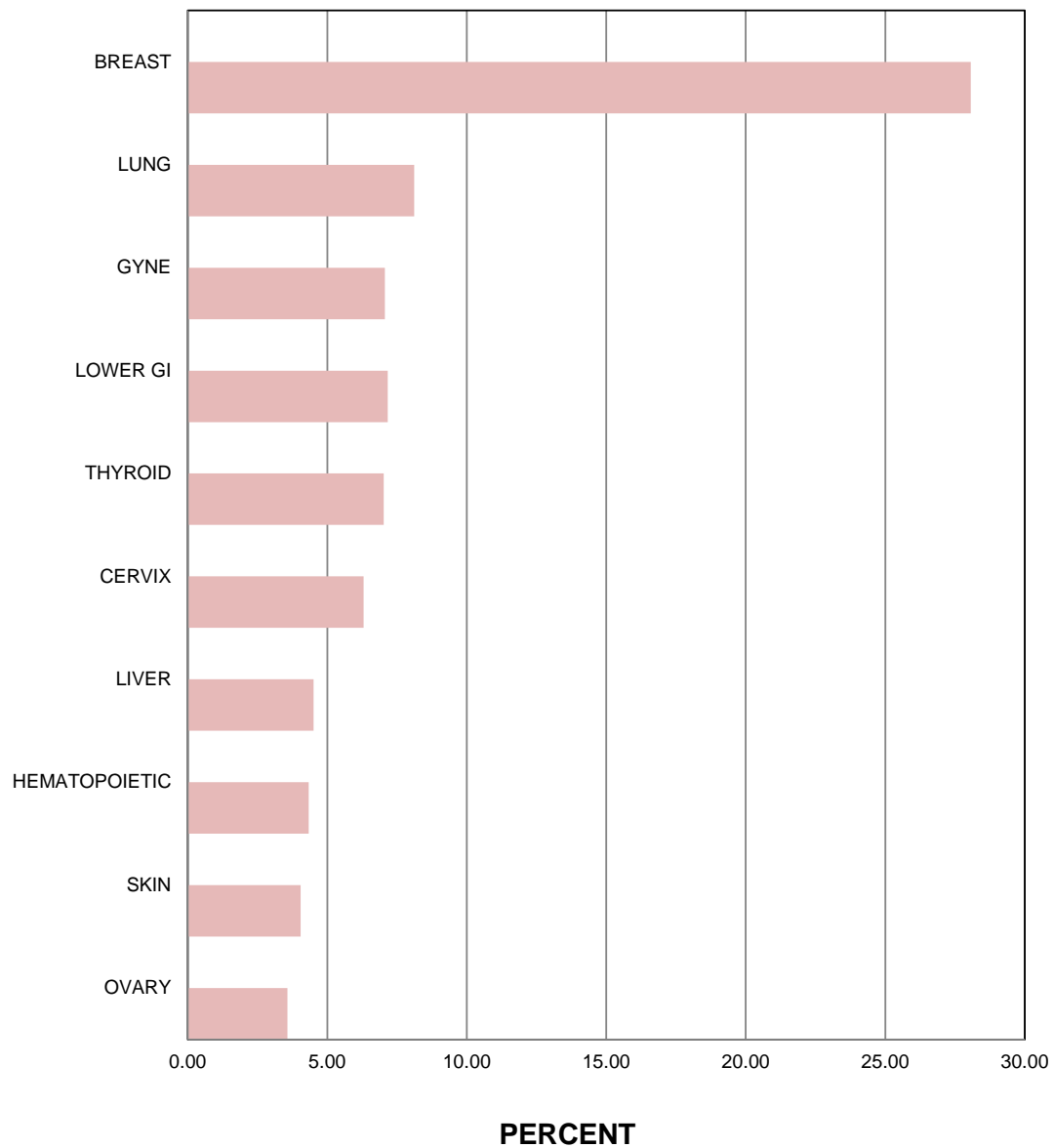
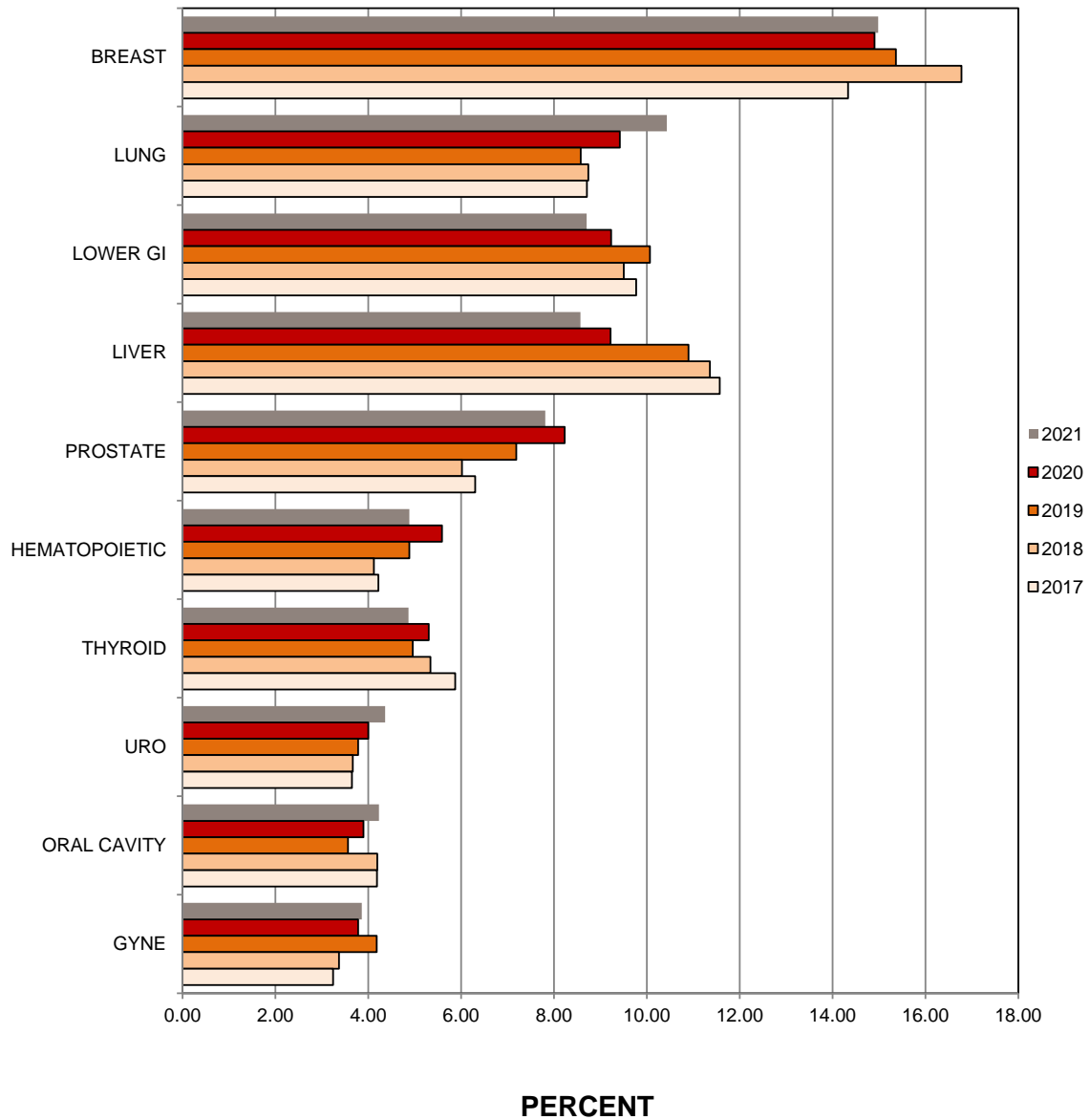
FIGURE XIII.I : LEADING CANCER IN FEMALE

TABLE XIV: 5 YEAR TRENDS OF INCIDENCE (2017 - 2021)

SITE	2021	2020	2019	2018	2017
ALL SITES (cases)	5,159	5,979	6,981	6,797	7,069
BREAST	14.98	14.90	15.36	16.77	14.33
LUNG	10.43	9.42	8.58	8.74	8.71
LOWER GI	8.70	9.23	10.07	9.50	9.77
LIVER	8.57	9.22	10.90	11.36	11.57
PROSTATE	7.81	8.23	7.19	6.02	6.30
HEMATOPOIETIC	4.88	5.59	4.88	4.12	4.22
THYROID	4.87	5.30	4.95	5.34	5.87
URO	4.36	4.00	3.78	3.66	3.65
ORAL CAVITY	4.23	3.90	3.57	4.19	4.19
GYNE	3.86	3.78	4.18	3.37	3.24

FIGURE XIV : 5 YEAR TRENDS OF INCIDENCE (2017 - 2021)



THE ADMINISTRATIVE COMMITTEE OF SIRIRAJ CANCER CENTER

Adune	Ratanawichitrasin	MD.	Consultant
Cheerasook	Chongkolwatana	MD.	Consultant
Pairat	Tepmongkol	MD.	Consultant
Suwanit	Therasakvichya	MD.	Consultant
Visit	Vamvanit	MD.	Consultant
Vitton	Chinswangwatanakul	MD, Ph.D.	Chairman of the Committee
Asada	Methasade	MD, Ph.D.	Vice-Chairman of the Committee
Somsri	Laiteerapong	MD.	Vice-Chairman of the Committee
Apichat	Asavamongkolkul	MD.	Committee
Archrob	Khuhapinant	MD, Ph.D.	Committee
Benjapa	Khiewwan	MD.	Committee
Bhoom	Suktitipat	MD, Ph.D.	Committee
Chanin	Limwongse	MD.	Committee
Charuwan	Akewanlop	MD.	Committee
Jamsak	Tscheikuna	MD.	Committee
Janjira	Petsusiri	MD.	Committee
Jiraporn	Setakornnukul	MD.	Committee
KleebSabai	Sanpakit	MD.	Committee
Krittiya	Korphaisarn	MD.	Committee
Mongkol	Laohapensang	MD.	Committee
Nan	Suntornpong	MD.	Committee
Paiboon	Sureepong	MD.	Committee
Ployploen	Phikulsod	MD.	Committee
Prapat	Suriyaphol	Ph.D.	Committee
Punnarerk	Thongcharoen	MD.	Committee
Rapin	Phimolsarnti	MD.	Committee
Rungsima	Wanitphakdeedecha	MD.	Committee
Sirirat	Kooptiwoot	MD.	Committee
Sith	Sathornsumetee	MD.	Committee
Sittiporn	Srinualnad	MD.	Committee
Siwanon	Jirawatnotai	Ph.D.	Committee
Somponnat	Sampattavanich	Ph.D.	Committee
Sueb Wong	Chuthapisith	MD, Ph.D.	Committee
Supot	Nimanong	MD.	Committee
Woramin	Rainsuwan	MD.	Committee
Thammawat	Parakonthon	MD.	Committee and Secretary

OFFICE STAFF

Arthit	Chuaykrajang	Siriporn	Timprasert
Cholticha	Songjang	Suppharat	Aungginan
Donlaya	Darachart	Thanawan	Waikluan
Kanokporn	Thamapala	Thapanee	Saejang
Mattana	Saengta	Tippawan	Gerdsuriwong
Nichada	Sengging	Wararat	Choojan
Premsak	Pongjit	Wichuta	Sukamol
Run	Kanchano		